

The Great Proletarian Cultural Revolution, Disruptions to Education, and Returns to Schooling in Urban China

John Giles
Albert Park
Meiyan Wang

The World Bank
Development Research Group
Human Development and Public Services Team
September 2008



Abstract

In determining whether a country's higher education system should be expanded, it is important for policymakers first to determine the extent to which high private returns to post-secondary education are an indication of the scarcity of graduates instead of the high unobserved ability of students who choose to attend post-secondary education. To this end, the paper identifies the returns to schooling in urban China using individual-level variation in educational attainment caused by exogenous city-wide disruptions to education during the Cultural Revolution from 1966 to 1976. For city-cohorts who experienced greater disruptions,

children's educational attainment became less correlated with that of their fathers and more influenced by whether their fathers held administrative positions. The analysis calculates returns to college education using data from the China Urban Labor Survey conducted in five large cities in 2001. The results are consistent with the selection of high-ability students into higher education. The analysis also demonstrates that these results are unlikely to be driven by sample selection bias associated with migration, or by alternative pathways through which the Cultural Revolution could have affected adult productivity.

This paper—a product of the Human Development and Public Services Team, Development Research Group—is part of a larger effort in the department studying the relationship between economic and political shocks, educational attainment and the returns to education. Policy Research Working Papers are also posted on the Web at <http://econ.worldbank.org>. The author may be contacted at jgiles@worldbank.org.

The Policy Research Working Paper Series disseminates the findings of work in progress to encourage the exchange of ideas about development issues. An objective of the series is to get the findings out quickly, even if the presentations are less than fully polished. The papers carry the names of the authors and should be cited accordingly. The findings, interpretations, and conclusions expressed in this paper are entirely those of the authors. They do not necessarily represent the views of the International Bank for Reconstruction and Development/World Bank and its affiliated organizations, or those of the Executive Directors of the World Bank or the governments they represent.

**The Great Proletarian Cultural Revolution, Disruptions to Education,
and Returns to Schooling in Urban China***

John Giles**
The World Bank†

Albert Park
Oxford University

Meiyan Wang
Institute for Population and Labor Economics
Chinese Academy of Social Sciences

Keywords: returns to schooling, wages, education, China
JEL codes: I20, J24, J30, O15, O53

*We are grateful for useful conversations with Xin Meng and Fang Cai, and for helpful comments on earlier drafts from Eric Edmonds, Belton Fleisher, Steven Haider, Hongbin Li, Djavad Salehi-Isfahani, John Strauss, Jan Svejnar, Jeffrey Wooldridge, Dean Yang and Dennis Yang. The authors acknowledge grants to support field research from Michigan State University (Intramural Research Grants Program), the Chinese Academy of Social Sciences, The Ford Foundation (Beijing), the University of Michigan (Rackham Faculty Research Grant), the International Centre for the Study of East Asian Development (ICSEAD), the Australian Research Council and the World Bank (Beijing), and support for follow-up research from the Research Support Budget of the World Bank, the Weatherhead Center for International Affairs at Harvard University (Academy Scholars Program) and the W.E. Upjohn Institute for Employment Research.

***Corresponding Author:* The World Bank MSN MC 3-311, 1818 H Street NW, Washington, DC 20433; phone: (202) 473-3451; e-mail: jgiles@worldbank.org.

†The research, discussions and conclusions presented in this paper reflect the views of the authors and should not be attributed to the World Bank or to any affiliated organization or member country.

The Great Proletarian Cultural Revolution, Disruptions to Education, and Returns to Schooling in Urban China

1. Introduction

One consequence of the ideological furor of China's Great Proletarian Cultural Revolution, initiated by Chairman Mao Zedong in 1966 and lasting until after his death in 1976, was the widespread disruption of formal education in urban areas. The extent of these disruptions differed across cohorts, across time, and across cities, depending on how zealously new policies were interpreted and implemented locally.¹ As a result, for no other reason than the unlucky location and timing of their birth, the schooling of many Chinese citizens was delayed or cut short, with long-term consequences for occupational attainment and earnings.

In this paper, we estimate the economic returns to schooling in urban China by relying on an identification strategy that exploits a particular feature of how exogenous supply shocks to education caused by the Cultural Revolution affected individual educational attainment. Analyzing data from a survey of workers conducted in five large Chinese cities in 2001, we first show that the Cultural Revolution was a great equalizer of educational access. Prior to and after the Cultural Revolution, children's educational attainment in urban China was highly correlated with the educational attainment of their parents--a nearly universal finding throughout the world. However, among city-cohorts affected during the Cultural Revolution years, children's educational attainment became much *less* correlated with that of their parents (see also Deng and Treiman, 1997) and *more* correlated with whether parents held administrative positions.

¹See Pepper (1996) for case studies that describe differences across localities.

We exploit changes in the correlation between parental characteristics and educational attainment to develop an instrumental variables approach to estimating the returns to schooling in urban China. An attractive feature of this approach is that the combination of exogenous city-cohort specific disruptions to education and variation in parental education produces individual-level variation in schooling shocks, which enables us to control explicitly for unobserved characteristics of each birth cohort in each city through the inclusion of city-cohort fixed effects. We thus avoid a key weakness of studies that identify the variation in years of schooling solely by cohort differences, such as Ichino and Winter-Ebmer's (2004) study of World War II educational disruptions affecting the 1930-35 birth cohorts in Austria and Germany and Meng and Gregory's (2002a) study of cohorts whose education were affected by the Cultural Revolution. In these papers, the authors are unable to control for unobserved cohort differences that are correlated with both schooling shocks and later productivity, such as those associated with differences in school quality, demographic or policy changes, or major political, social, or economic events that may affect the productivity of entire cohorts.

This paper contributes to a literature summarized by Card (2001) in which measurement of the causal effect of education on labor earnings is facilitated using supply-side factors as exogenous determinants of schooling outcomes. Instruments used in previous studies of the returns to education include quarter of birth (Angrist and Krueger, 1991; Staiger and Stock, 1997), geographic proximity to schools (Kane and Rouse, 1993; Card, 1995), changes in school systems or school leaving age (Harmon and Walker, 1995), special education subsidies for veterans (Lemieux and Card, 1998), and a national school expansion program (Duflo, 2002). Along with Duflo (2002), this is one of the few studies that attempt to identify the causal effect of education in a rapidly growing developing country. In contrast

to Duflo's paper which focuses on expansion of primary schools, this paper focuses on shocks that primarily influenced high school and college attainment. Using instrumental variables to identify the true returns to higher levels of educational attainment in developing countries is of particular interest because ability bias in such settings is likely to be substantial given the highly selective procedures often used to allocate scarce entrance slots in institutions of higher education to large pools of potential students. Developing country governments facing severe resource constraints must make difficult choices between investing in higher education or primary and secondary education. Accurate information on the true private returns to different levels of schooling can better inform such choices.

Studies that have estimated the returns to schooling in urban China using Mincer-type specifications generally have found that the returns to schooling remained very low by international standards well into the reform period, which began in 1978, but that starting in the mid-1990s there was a steady and dramatic increase in the returns to schooling, reaching very high levels even in comparison to other countries. The best set of consistent estimates over time uses repeated cross-sectional urban survey data from 6 provinces in different regions from 1988 to 2001 and finds that over this period the returns to a year of schooling in urban China grew from 4 percent to over 10 percent (Zhang et al., 2005). In 2001, the return to high school education compared to middle school was 21 percent, and the return to college education compared to high school was 37 percent (Zhang et al., 2005).

These simple estimates of the returns to schooling in urban China are subject to several sources of potential bias, including measurement error in self-reported educational attainment and unobserved ability or school quality. A recent paper by Li et al. (2005) attempts to deal with these problems by comparing earnings differences between identical twins with different levels of educational attainment to reduce bias caused by unobserved

ability. They also use sibling reports of each other's educational attainment as an instrumental variable to deal with measurement error. Analyzing data from five Chinese cities in 2002, the estimated returns to a year of schooling are only 3.8 percent, compared to an OLS estimate of 8.4 percent. As has been pointed out by others, schooling differences between twins are unlikely to be random, so that twins-based estimates will still be subject to endogeneity bias (Bound and Solon, 1999; Neumark, 1999). Nonetheless, the results suggest a much greater degree of ability bias in China than has been found in twins studies in the U.S.

Previewing our main findings, taking the means of our preferred IV estimates, we find that the returns to a year of schooling in urban China in 2001 are 7.6 percent compared to 8.3 percent using OLS, the returns to college education versus high school are 34.7 percent compared to 42.0 percent using OLS, and that the returns to high school versus middle school are 27.3 percent compared to 20.9 percent using OLS. Thus, consistent with ability bias, IV estimates of the overall returns and the returns to college are lower than the OLS estimates. The fact that the IV estimate for the returns to high school is higher than the OLS estimate is also consistent with an ability bias story in which selection into college creates a negative ability bias for those who complete only high school. We show that it is unlikely that our results are driven by sample selection bias associated with migration, or by alternative pathways through which the Cultural Revolution could have affected adult productivity.

The rest of the paper is organized as follows. In section 2, we describe the data and key variables used in the estimation. In section 3, we provide evidence on the disruptive effects of the Cultural Revolution on educational attainment. Section 4 presents the estimating equations for the determinants of log wages and discusses our identification

strategy. In section 5, we present and discuss our estimation results, and section 6 concludes.

2. Data and Measurement

The China Urban Labor Survey (CULS) was conducted at year-end 2001 by the Institute for Population and Labor Economics at the Chinese Academy of Social Sciences (CASS-IPLE), working with provincial and municipal government offices of the National Bureau of Statistics. The authors collaborated in the design and execution of the survey. The CULS was conducted in five cities: Fuzhou, Shanghai, Shenyang, Wuhan, and Xian. The cities were chosen to be broadly representative of China's different regions. Fuzhou and Shanghai are coastal cities, Shenyang is in the northeast, Wuhan is in central China, and Xian is in western China. Three of the cities are among China's six largest cities by population, and another ranks tenth. In each of the five cities, a representative sample of 700 households whose members were urban permanent residents (holding urban resident permits of the surveyed city) were surveyed.² Each household head was asked questions about the household, and then all household members above age 16 and no longer in school were interviewed individually. This resulted in 8,109 individual observations. Of these 8,109 individuals, 5,787 were younger than mandatory retirement age, and 4,076 were employed or reported labor earnings at the time of the survey. We exclude self-employed workers because their reported earnings reflect returns to capital as well as labor. We also exclude individuals born after 1978, because many could have still been in school at the time of the

²Within each city, a three-stage proportional population sampling approach was used to sample an average of 15 registered urban households in each of 70 neighborhood clusters (for details, see Giles, Park, and Cai, 2006) or a discussion of survey protocol on Giles' website (<http://www.msu.edu/~gilesj/Protocol.pdf>). The survey had a non-response rate of 16.5 percent, of which 6.5 percent of households could not be found, 4.9 percent had moved, and 5.1 percent refused to be interviewed. This refusal rate compares favorably with the first round refusal rates of two influential surveys from transition and developing countries: the Russian Longitudinal Monitoring Survey (RLMS) and the Indonesia Family Life Survey (IFLS).

survey in 2001. This leaves us with 3614 observations of urban resident adults between the ages of 21 and 60 who were employed in November 2001.

By focusing on urban permanent residents, the survey excludes those with temporary residence permits or with no registration status, a group consisting primarily of rural migrants. China maintains a household registration (*hukou*) system which discriminates against non-local residents in access to many public services and benefits as well as employment opportunities. Migrants tend to be much younger than urban residents, are likely to have attended schools of poorer quality in rural areas, are more likely to be self-employed, and are a self-selected group who earn lower wages than urban residents even after controlling for observable characteristics (Meng and Zhang, 2002), either due to discrimination or other unobserved differences (e.g., school quality, ability, etc.). For all of these reasons, we focus only on the returns to schooling of urban permanent residents even though the CULS did include a separate survey of migrants in each city. According to the 2000 population census, registered urban households comprised 76 percent of those living in the five sample cities.

The CULS survey instrument asks detailed questions about workers' educational histories. It records the year in which each level of schooling began (primary, lower secondary, upper secondary, vocational high school, college, vocational college, three-year college, graduate school) and the years of schooling completed at each level, including information on repeated grades. From this detailed information, we calculate multiple education disruption variables discussed in section 3 below.

The questionnaire also included questions about the schools attended at each level, which reflect both school quality and early assessments of individual ability that would be otherwise unobserved. These questions include location (city, county, town, village); the

school's province; and whether the student was in a magnet school, an accelerated class in a regular public school, a regular public school class, or a private school. Detailed questions also were asked about the parents of the respondent, including educational attainment, primary industry of employment, occupation, and technical and administrative status.

3. Education Disruptions and the Great Proletarian Cultural Revolution

In 1966, Mao Zedong initiated a radical political campaign that incited millions of Chinese citizens to revolutionary struggle against corrupt cadres deemed to have betrayed China's Communist revolution. During this tumultuous period, the system of formal education in China's cities was thrown into chaos, while rural schooling was less affected (Meng and Gregory, 2002b). Urban elementary and secondary education was disrupted for at least six years, and for much of the period from 1966 to 1968 schools in many urban areas were closed altogether. Most universities were closed for six years. Upon re-opening, family political class background status served as an important eligibility criteria for college admission. Educational disruptions were worse for children with parents who had a bad political class background, and even those with a "middle" background could have been constrained by quotas favoring children of "poor farmers", "workers" and those with "revolutionary" backgrounds, especially at higher levels of education (Pepper, 1996). Universities did not return to merit-based enrollment of students until 1977.

The shock to post-secondary education is evident in Figure 1, which plots administrative data on enrollments in institutions of higher education by year. The figure shows that there were no new entrants to universities from 1967 through 1970, and a sharp drop in total enrollments during the Cultural Revolution. These disruptions are not nearly as evident when we plot the share of individuals with higher education degrees by birth cohort

using data from the 2000 census (Figure 2). This may be due to the preponderance of correspondence schools and part-time degree programs in the 1980s and 1990s, which enabled individuals to obtain higher education degrees later in life, and the relatively low overall college enrollment rates as a share of the total population. Also, entering classes contain students from multiple birth cohorts, so that cohort differences in educational attainment will be less obvious than time differences in enrollment. In contrast, the census data plotted in Figure 2 does show clearly the shock to high school completion for Cultural Revolution cohorts.

Reinforcing disruptions created by closure of high schools and universities early in the Cultural Revolution was the “sent-down youth” program (also known as the “rusticated youth” program), under which youth from urban areas were sent to the countryside to live in rural communities. The stated ideological motivation for the program was to help young people get in touch with the revolutionary origins of the Party and to contribute to the country’s rural development. However, the program also has been viewed as a pragmatic response to social unrest in urban areas created by a vast youth population that was neither employed nor in school and stirred to revolutionary furor at the start of the Cultural Revolution (Meisner, 1986). Starting in 1968 large numbers of urban youth of high school and early college ages were dispatched to rural areas, guided by education officials and local revolutionary committees established during the Cultural Revolution. Families were typically allowed to choose one child to keep in the city, but all other children of appropriate age were sent to the countryside. As the Cultural Revolution progressed, students were sent to the country at progressively later ages and some students with favorable class backgrounds were allowed to defer service in the countryside. While rusticated youth were initially expected to spend two years in the countryside, many spent much longer periods of time there because

of the lack of available urban jobs. Return from the countryside could be facilitated by college admission, which until reforms in 1978 required a favorable class background, by joining the military, or by using the connections of a parent, relative, or acquaintance with high enough administrative status to arrange reassignment to an urban job. Most but not all sent down youth were able to return to urban areas after the onset of economic reforms in 1978.

In Table 1, we present descriptive statistics for the sample used in our analyses. We divide individuals into three cohort groups—those whose education was likely to be completed before the Cultural Revolution began (pre-Cultural Revolution cohorts), those whose education was potentially affected by the Cultural Revolution (Cultural Revolution cohorts, born from 1948 to 1963), and those who did not reach school age until after the Cultural Revolution ended (post-Cultural Revolution cohorts).³ As seen in Table 1, the average years of education and share of individuals completing high school and college were all lower for Cultural Revolution cohorts (11.12 years, 59.9 and 10.6 percent) than for pre-Cultural Revolution cohorts (11.50, 64.7 and 20.2 percent) and post-Cultural Revolution cohorts (12.70 years, 79.6 and 31.0 percent). Moreover, the decline in average educational attainment of the Cultural Revolution cohort occurred even as the average educational attainment of fathers and mothers increased in comparison to the pre-Cultural Revolution cohorts (Table 1).

We construct three measures of educational disruptions caused by the Cultural Revolution which are specific to each birth cohort in each city. First, separately for each city, we measure cohort shocks to high school and college education by calculating the deviation of the actual share of each Cultural Revolution cohort that completed each level of schooling

³ These cutoff years correspond to those whose high school education was likely to have been affected by the Cultural Revolution (see below).

from the cohort trend in these shares calculated from the educational attainment levels of pre- and post-Cultural Revolution cohorts. We calculate shocks to the completion of high school and to the completion of three or four year post-secondary degrees by age 25 conditional on graduating from middle school. We restrict the age of college completion to avoid the influence of degrees acquired later in life on our measure of disruptions during the Cultural Revolution period.⁴

For high school, most cohorts born prior to 1948 would have reached the age of high school graduation in urban areas by the start of the Cultural Revolution in 1966, and cohorts born after 1963 would not plausibly have had high school enrollment affected because the sent-down youth program had ended by their 15th birthday. For each individual, the shock to high school faced by individual i in city j and birth cohort t , $hshock_{ijt}$, is calculated as:

$$hshock_{ijt} = htrend_{jt} - hmean_{ijt} \quad (1)$$

where $htrend_{jt}$ is the trend share of middle school graduates from birth cohort t in city j completing high school and $hmean_{ijt}$ is the actual share of middle school graduates who completed high school.⁵ When calculating the value of $hmean_{ijt}$ for each individual i , we exclude i 's own report out of concern that mis-measurement of i 's shock could be correlated with unobservables. In addition, out of concern that city-cohort sizes may be small for some years and introduce noise or spurious correlations, $hmean_{ijt}$ is calculated using individuals who completed middle school from the $t-1$, t and $t+1$ birth cohorts.⁶ We calculate shocks to

⁴When calculating educational shocks we make use of all available observations, and thus include information on individuals of working age who were not employed during the previous year.

⁵Specifically, the trend line is calculated as:

$$htrend_{jt} = hmean_{j47} + [(hmean_{j64} + hmean_{j65} + hmean_{j66})/3 - (hmean_{j45} + hmean_{j46} + hmean_{j47})/3] / 17 \times (byear - 47)$$

where $hmean_{jt}$ is the share of the birth cohort born in year t and city j who completed high school.

⁶We find that the results of our analysis are robust to using education shocks for year t cohorts as an alternative to the three cohort average.

post-secondary completion ($psboc_{ijt}$) in a similar fashion, except that the birth cohorts potentially affected by the Cultural Revolution are from 1945 to 1963 instead of 1948 to 1963 as for high school.⁷

A simple way to illustrate the extent of educational disruption is to compare the mean attainment of the Cultural Revolution cohort with the predicted attainment levels based on the fitted trend line linking pre- and post-Cultural Revolution cohorts ($htrend$). According to this calculation, if the Cultural Revolution had not occurred, the percentage of adults completing high school and college would have been 68.7 and 21.0 percent, or 8.8 and 10.4 percentage points higher than actual attainment rates. Particularly striking is that the share completing college would have been twice as great in the absence of the Cultural Revolution.

Our third education disruption variable measures the scope of the sent down youth program for each cohort in each city. For individual i in city j from birth cohort t , $sdsboc_{ijt}$ is calculated as the share of individuals other than i participating the program over the $t-1$, t , and $t+1$ birth cohorts.

We plot average values of these three disruption variables for different birth cohorts in Figure 3. Positive values reflect greater disruption (lower educational attainment relative to trend or greater share of individuals affected by the sent down youth program). The negative disruption for high school completion for cohorts born after 1956 reflects the expansion of high school education that occurred during the latter half of the Cultural Revolution.⁸ Perhaps most striking is the significance of the sent down youth program. For each cohort

⁷Regular college enrollment was affected for a longer period because competitive examinations were not reinstated for college admission until 1977 for the class entering in 1978, and those individuals leaving school after 1966 were allowed to sit for college entrance examinations through 1981.

⁸Pepper (1996) notes that after 1972 there were efforts to expand high school graduation rates which were later scaled back.

born from 1948 through 1958, 30 percent or more were sent to the countryside. The peak cohort was 1951, of which 50 percent were sent down youth.

As noted earlier, our identification strategy focuses on how educational disruptions altered the relationship between parental characteristics and educational attainment to create individual, within-city-cohort variation in the effects of the Cultural Revolution on educational attainment. Relative to pre-Cultural Revolution cohorts, we expect that parental education mattered less in determining children's educational attainment during the Cultural Revolution years. The children of elites (those with *bad* class backgrounds) likely had a harder time gaining access to education than the children of non-elites, but our identification approach works as long as relative access to education of the children of educated parents was reduced during the Cultural Revolution period relative to other periods. This would have happened, for instance, if the Cultural Revolution made educational attainment more universally accessible, even if it did not discriminate against children of elites, or if overall access to higher education contracted and this had a larger effect on the educational attainment of children of elites

We also hypothesize that parental administrative status became more important for educational attainment during the Cultural Revolution. This would be the case if during the Cultural Revolution parents in high administrative positions could influence whether and where their children were sent to the countryside, reduce their time spent in the countryside as rural sent-down youth, or increase their chances of getting into college. For example, students sent to better rural locations or who returned earlier to urban areas would have a better environment for self-study and thus increase their chances of passing the college entrance exam with the return of merit-based exams. In some cases, connected parents might even have been able to directly influence college admissions decisions during the

period 1972 to 1977 when such decisions were based on political, rather than academic, considerations. We define father to be a high administrator when his highest achieved administrative status was at the level of division manager (*chu*), bureau director (*ju*) or above.

To illustrate the changes in the intergenerational correlation of educational attainment associated with the Cultural Revolution, in Figure 4, for each city we plot partial correlation coefficients for fathers' and children's years of schooling by birth cohort.⁹ In each city, the correlation falls during the Cultural Revolution years and recovers thereafter, with the exact timing and magnitude of these changes varying across cities. The Cultural Revolution thus appears to have succeeded in temporarily weakening the strong correlation between the educational attainment of fathers and their children that is found in most societies. This finding echoes that of Deng and Treiman (1997), who analyze census data to examine trends in the intergenerational correlation in educational attainment for households in which parents co-reside with their adult children.

To examine these relationships more rigorously, we estimate a binary response probit model, $G(\cdot)$, where the determinants of the probability of individual i from city j and cohort t to complete a certain level of education, ED_{ijt} , is modeled as follows:

$$P(ED_{ijt} = 1) = G(\gamma_1(fed_{ijt} \cdot eshock_{jt}) + \gamma_2(fad_{ijt} \cdot eshock_{jt}) + \mathbf{X}_{ijt}\boldsymbol{\beta} + \mathbf{cohort}_{jt}) \quad (2)$$

Here $eshock_{jt}$ is a city-cohort specific shock to education (alternatively $hshock_{jt}$, $psbshock_{jt}$ or $sdsbshock_{jt}$) that is interacted with father's years of education, fed_{ijt} , and also separately interacted with whether father held high administrative status, fad_{ijt} . The interacted variables fed_{ijt} and fad_{ijt} are included among a vector of individual, family, and school characteristics,

⁹ The partial correlations control for differences in fathers' administrative status

\mathbf{X}_{ijt} , to control for their direct relationship to child ability or childrens' home environment. Also included as controls are age and age-squared measured to the month as well as the school and ability variables described earlier. Finally, we include a vector of dummy variables for each city-cohort, \mathbf{cohort}_{jt} . These dummies as well as other city-cohort level variables in our estimated probit models are defined for three-year city-cohorts.¹⁰ Given this rich set of control variables, the coefficients on the interaction terms, γ_1 and γ_2 , cleanly identify variation in the effects of education shocks on educational attainment associated with fathers' education and administrative status.

In Table 2, we present estimation results for the determinants of college and high school completion using equation (2) and different combinations of education shock variables. In the first four columns, we examine the effect of cohort shocks to education on the probability of completing college. We first look separately at the effects on college completion of shocks to college completion, shocks to high school completion, and shocks due to the sent down youth program. For each model, the coefficient on the interaction of the education shock variable with father's years of schooling carries a negative sign and the interaction with the dummy for whether the father has a high administrative position carries a positive sign. Moreover, in each of the models at least one of the two coefficients on the interaction terms is statistically significant (see results in columns 1, 2, and 3). The results suggest that a decline in the share of a cohort attending college or high school has a more pronounced negative effect on the probability of attending college for children with well-educated fathers, or alternatively, that fathers' education has less of a positive effect on children's educational attainment for cohorts subject to greater educational disruptions. We

¹⁰Specifically, cohorts are in the following three-year groupings at the city: 40-42, 43-45, 46-48, 49-51, 52-54, 55-57, 58-60, 61-63, 64-66, 67-69, 70-72, 73-75, and 76-78. Using one-year cohorts leads to a model that is exactly determined for some city-birth year cohorts. Nonetheless, estimated marginal effects do not differ qualitatively whether we use one-year or three-year cohorts.

also find that if the father is a high administrator, children are relatively more likely to attend college if the education shock is greater in magnitude. In column (4), we present results for the case in which all three education shock variables are interacted with father's years of schooling and father's administrative status. In all models of college completion, the interaction terms are jointly statistically significant. When all three sets of interactions are included, they are statistically significant at the 99 percent confidence level.

In columns (5) through (7), we present the results for the determinants of high school completion using shocks to high school and shocks caused by the sent down youth program. Children with more educated fathers are relatively less likely to complete high school when the cohort shock to high school is greater, but there is a statistically and economically insignificant effect of father's administrative status (column 5). Similarly, a higher share of one's cohort participating in the sent down youth program is associated with lower probability of completing high school when father's have higher education (column 6). When both sets of interactions are included (column 7) the coefficients on the interactions are not independently significant, but they remain jointly significant at the 90 percent confidence level.

4. Estimating the Returns to Schooling

Starting with a standard Mincer-type wage regression, we model the log wage of individual i in birth cohort t in city j (w_{itj}) to be a linear function of schooling (S_{itj}), measured either in years or as levels of attainment (college, high school and middle school). To control for city and cohort effects created by unobserved differences in school quality and local policies, we first include vectors of city and cohort dummies separately, and then

interactions of these dummies to allow cohort effects to vary across cities. We use ordinary least squares (OLS) to estimate the following equation:

$$w_{ijt} = \beta_0 + \beta_1 \mathbf{S}_{ijt} + \mathbf{X}_{ijt} \boldsymbol{\beta}_2 + \sum_{j=2}^J \gamma_j + \sum_{t=2}^T \lambda_t + u_{ijt} + \varepsilon_{ijt} \quad (3)$$

where γ_j and λ_t are city and birth cohort effects, and \mathbf{X}_{ijt} includes age and age-squared (measured to the month). To highlight the likely endogeneity bias, we include an omitted variable, u_{ijt} , which is correlated with both \mathbf{S}_{ijt} and w_{ijt} (e.g., unobserved ability).

After first estimating a simple Mincer equation, we gradually build up to our preferred specification. We first add city-cohort dummies, which can be expressed as follows:

$$w_{ijt} = \beta_0 + \beta_1 \mathbf{S}_{ijt} + \mathbf{X}_{ijt} \boldsymbol{\beta}_2 + \sum_{j=2}^J \sum_{t=2}^T \lambda_{jt} + u_{ijt} + \varepsilon_{ijt} . \quad (4)$$

We next add to the set of control variables \mathbf{X}_{ijt} , including gender (dummy for female), height (the z-score within gender), gender*height, and parent and family background variables (father and mother's years of education, parent occupation dummy variables, number of siblings).^{11,12} Finally, we add school quality and ability variables. We expect to observe a fall in the estimated coefficient on years of schooling as we introduce more variables that proxy for ability, family support, or school quality.

¹¹One will note that we have pooled men and women in this model. We have also estimated returns to educations separately for men and women, but find little difference in the patterns of returns and how they change using our IV strategy. We therefore pool the samples to take advantage of the larger sample size.

¹²Controlling for height, which is most heavily influenced by early childhood nutrition which predates educational disruptions, may be important because early childhood nutrition strongly predicts later educational attainment (Almond, 2006).

China's selective educational system restricts access to higher levels of schooling to high ability students, so that u_{ijt} is likely to lead to upward bias in the estimated returns to schooling. Identifying the causal relationship between schooling and earnings requires a valid instrument that is correlated with S_{ijt} but uncorrelated with u_{ijt} . To implement the strategy described above, we first generate predicted probabilities for high school and college enrollment from the probit models (results in Table 2) and then use these predicted probabilities as instruments.¹³ Note that the models shown in Table 2 include the same rich set of covariates proxying for dimensions of unobserved ability that we include in the second stage of our IV models, and that identification comes from the interactions of cohort-specific education shocks with father's education and administrative status.

We first present three panels of results for OLS models (Table 3). In column (1) we estimate equation (3), regressing log wage on schooling, age, age-squared, and city and birth cohort dummy variables. In column (2) we estimate equation (4), including interactions of three-year birth cohort dummy variables and city dummy variables. This turns out not to have a significant effect on the coefficient on schooling in any of the models estimated. In column (3), we add the additional covariates other than school quality. The estimated return to college falls from 50 to 47 percent, and the return to a year of education falls from 9.6 to 8.9 percent. In column (4) we add school quality and parent occupation and administrative status variables. The return to college education falls from 47 to 42 percent, while there is little appreciable change in the return to high school over middle school. The return to a year of schooling falls from 8.9 to 8.3 percent (Panel B). Finally, using piecewise linear spline models, we find that the return to a year of post-secondary schooling falls from 12.9 to 11.9 percent, but we do not observe an economically significant change in the return to schooling

¹³See Wooldridge (2002) pages 139-141 for a general discussion of the use of generated instruments and Chapter 18 for use of predicted probabilities from a probit model as instruments.

through high school (Panel C). These results suggest to us that upward ability bias may be more pronounced at higher and more selective levels of education.

We present the results from implementing our IV estimation strategy in Table 4. For reference purposes, OLS results from column (4) of Table 3 are reproduced in the first column of each panel. In Panel A, we use predicted probabilities from models (4) and (7) of Table 2 as instruments for college and high school, respectively. With probabilities from these models predicted by all available interacted cohort shocks affecting college and high school, our estimates in column (2) are exactly identified. Consistent with ability bias, IV estimates of the returns to college are lower than the OLS estimates. The return to college relative to high school falls by 17 percent from 42.0 percent to 34.7 percent. However, the return to high school relative to middle school rises from 20.9 to 28.2 percent. This contrasts with the findings of Li et al. (2005) who report that for twins, the return to high school compared to not completing high school is not statistically different from zero (their estimate of a 37 percent return to college is quite close to ours). The higher IV estimate of the returns to high school compared to OLS is consistent with an ability bias story in which selection into college creates a negative ability bias for those who complete only high school. In column (3), we present IV estimates using predicted probabilities from pairs of interaction terms in columns (1), (2) and (3) of Table 2 for college, and columns (5) and (6) for high school. Our IV estimates of the returns to college and high school education are virtually unchanged. The instruments easily pass an over-identification test, suggesting that there is no statistical evidence against the validity of our instruments.

Overall, we observe a decline in the estimated return to a year of schooling from 8.3 percent to a range of 7.5 to 7.7 percent in our IV estimates (Panel B of Table 4). Examining the differences in the return to a year of post-secondary schooling relative to returns to a

year of schooling for grades 1 through 12, we obtain results consistent with positive ability bias for college and negative ability bias for high school (Panel C). Comparing the results of OLS to IV, we find that the 12 percent per year return to college education falls to 8.4 percent per year, while the return to a year of high school education rises from 5.3 to 7.0 percent.¹⁴

5. Robustness

5.1. Migration and sample selectivity

One concern about our sample is that it consists of only individuals who were living in the sample cities at the time of the survey in November 2001. It is possible that a large number of individuals educated in each city had moved elsewhere, for example due to migration to other cities or because they were sent down youth who never returned to the city. If the extent and nature of sample selectivity varied across cohorts in a manner correlated with the magnitude of educational disruptions, this could introduce bias to our estimates. Changing selectivity could lead us not only to mis-measure the extent of disruptions caused by the Cultural Revolution for different cohorts, but also to misattribute changes in the correlations among variables (such as changing parent-child correlations in educational attainment) to educational shocks instead of changes in selectivity bias. Despite this potential, one would still require a specific story of how cohort specific selectivity bias is correlated with the magnitude of education disruptions to question whether the IV estimates are biased (we were unable to do so).

¹⁴ Like many studies in this literature, despite the large magnitude of the effects on the estimated returns to schooling, the IV estimates are not sufficiently precise to be statistically significantly different from the OLS estimates using Hausman tests.

Nonetheless, it is possible to study the magnitude of sample selection by analyzing data from the 2000 census, which asked about respondents' current place of residence, the province in which they were born, and their current residential registration status (agricultural or non-agricultural *hukou*). We can then examine, at the province level, educational attainment outcomes for individuals registered as urban residents and currently living in urban areas, for urban-registered individuals born in the province and continuing to reside in the province, and for urban-registered individuals born in the province and living anywhere in the country. In Figure 5, we present evidence on educational attainment for these three different groups for each CULS province.

The results for Shanghai are particularly instructive because Shanghai is both a city and a province, so that the census and CULS cover the same urban population. Shanghai is also a city that experienced very large educational disruptions. Figure 5 shows that in Shanghai the disruption to education was substantial and virtually indistinguishable for individuals born in Shanghai and still living in Shanghai (the solid black line) and for individuals born in Shanghai and living anywhere in China (the dotted gray line). For the other provinces where CULS cities are located, we also find that the patterns of educational attainment across cohorts are nearly identical for current urban residents born in the province and still residing in the province (solid black line) and for urban residents born in the province but residing anywhere in China (grey dotted lines). Overall, the evidence presented in Figure 5 suggests that selectivity bias associated with migration is very unlikely to be important.¹⁵

¹⁵ Figure 5 also shows that education disruptions due to the Cultural Revolution are not as apparent for provinces other than Shanghai. This could be driven by two factors: reporting of correspondence degrees as actual degrees and the fact that disruptions to education were not as great in smaller cities as in large cities. As the power base of the *Gang of Four*, who were viewed as responsible for many of the excesses of the Cultural Revolution, Shanghai was far more strident in promoting revolutionary policies during the Revolution.

5.2. Alternative pathways

Because the Cultural Revolution was a major political event involving many policy changes and significant social turmoil, one might be concerned that educational disruptions are associated with other unobserved impacts of the Cultural Revolution on individuals that are correlated with later productivity. For example, education disruptions could have created mental stress that influenced long-term health outcomes, or could have occurred at the same time as disruptions to the health care system (or be correlated with other policies) which affected health outcomes. The latter effect, however, is unlikely because it requires that correlated policies have age-specific effects similar to educational disruptions (for example, they should affect school-age children but not pre-school age children). For our estimates to be biased due to alternative pathways, it also would require that the magnitude of Cultural Revolution effects on alternative pathways be correlated with parental characteristics in the same way as educational outcomes.

One way to address the concern about alternative pathways is to evaluate the extent to which our instruments are correlated with measures of those alternative pathways, such as physical and psycho-social health outcomes. To do this, we regress dummy variables for chronic illness, physical deformity, and an index of psycho-social health on the same set of regressors and instrument sets used in the first stage regressions reported in Table 2. We present results of F-tests for the different instrument sets in Table 5. In no case are the instruments found to be jointly statistically significant, so there is no evidence that educational disruptions are systematically related to health outcomes. This contrasts sharply with the results presented in Table 4, which show that our instruments for college and high school enrollment have F-statistics well over 20 in every instance.

Could parental characteristics have influenced not only educational attainment but also early post-education employment opportunities to a greater extent when Cultural Revolution shocks were greater? First, this is unlikely because the timing of measured shocks to education do not match the timing of labor market entry. Second, and relatedly, labor market impacts were unlikely to persist in the same way as shocks to educational attainment because the onset of economic reform in 1978 significantly altered the distribution of employment opportunities. Finally, to the extent that parental traits did influence early employment opportunities more for city-cohorts subject to greater educational shocks, and that these influences had a long-term effect on future career paths and realized wages, this should lead to upward bias in our estimates of the returns to schooling assuming that the direction of effects on early employment outcomes were the same as those on schooling. Thus, such bias cannot explain the downward bias in the OLS returns to college education or the different directions of bias in the OLS returns to college and high school education.

6. Conclusions

In this paper, we exploit heterogeneous impacts of educational supply shocks associated with China's Great Proletarian Cultural Revolution from 1966 to 1977 to identify the causal effect of schooling on wages. An advantage of our approach is that, unlike prior studies based on cohort comparisons, we examine variation in shocks to individuals within city-cohorts associated with parental characteristics, which enables us to control for the many cohort differences within cities that are likely to be correlated both with productivity and the timing of the Cultural Revolution, e.g., school quality.

Our estimates do not account for general equilibrium effects on the returns to schooling caused by the Cultural Revolution's impact on the aggregate relative supply of workers with different levels of education. Accounting for such effects would be important if our goal were to evaluate the welfare effects of the Cultural Revolution which is beyond the scope of this paper.¹⁶ But such concerns do not undermine our use of the Cultural Revolution as an exogenous source of variation in educational attainment to identify the returns to schooling in China's urban labor market in 2001.

We find that IV estimates of the returns to college are notably lower than OLS estimates, while the opposite is true for the returns to high school. We interpret these results to be evidence of selectivity bias associated with higher ability students entering college. This is an important finding because it suggests that simple estimates of the returns to schooling in countries with highly selective entrance exams that affect school progression may overestimate the private returns to higher education. If policymakers view the high return to college education as an indication of the scarcity of university graduates, rather than evidence of selection effects associated with entrance examinations, this may lead to support for more rapid expansion in the capacity of higher education institutions than would be otherwise warranted.

References

- Almond, Douglas (2006). "Is the 1918 Influenza Pandemic Over? Long-term Effects of In Utero Influenza Exposure in the Post-1940 US Population," *Journal of Political Economy* v114, n4 (August 2006): 672-712.
- Angrist, Joshua D., and Alan B. Krueger (1991). "Does Compulsory School Attendance Affect Schooling and Earnings?" *Quarterly Journal of Economics* 106: 979-1014.

¹⁶ For example, if estimated returns to high school and college are taken to be exogenous, we estimate that wages of the the Cultural Revolution cohort would have been 9 percent higher in the absence of shocks to high school and college attainment.

- Ashenfelter, Orley, and Cecilia Rouse (1998). "Income, Schooling and Ability: Evidence from a New Sample of Identical Twins," *Quarterly Journal of Economics* 113(1): 253-284.
- Byron, Raymond, and Evelyn Manaloto (1990). "Returns to Education in China," *Economic Development and Cultural Change* 38: 783-796.
- Card, David (2001). "Estimating the Return to Schooling: Progress on Some Persistent Econometric Problems." *Econometrica* 69(5): 1127-1160.
- Card, David (1999). "The Causal Effect of Education on Earnings," in Orley Ashenfelter and David Card, eds., *Handbook of Labor Economics*, Volume 3A. Amsterdam and New York: North Holland.
- deBrauwer, Alan, and Scott Rozelle (2002). Carefully Measuring the Returns to Education in Rural China. Unpublished manuscript, Williams College.
- Deng, Z., and Don J. Treiman (1997). "The Impact of the Cultural Revolution on Trends in Educational Attainment in the People's Republic of China." *American Journal of Sociology* 103(2): 391-428.
- Duflo, Esther (2001). "Schooling and Labor Market Consequences of School Construction in Indonesia: Evidence from an Unusual Policy Experiment." *American Economic Review* 91(4): 795-813.
- Fleisher, Belton, and Xiaojun Wang (2004). "Skill Differentials, Return to Schooling, and Market Segmentation in a Transition Economy: the Case of Mainland China," *Journal of Development Economics* 73(1): 315-328.
- Giles, John, Albert Park and Fang Cai (2006). "How has Economic Restructuring Affected China's Urban Workers?" *China Quarterly*, 185 (March 2006): 61-95.
- Harmon, Colm, and Ian Walder (1995). "Estimates of the Economic Return to Schooling for the United Kingdom," *American Economic Review* 85: 1278-1286.
- Heckman, James, and Xuesong Li (2004). "Selection Bias, Comparative Advantage and Heterogeneous Returns to Education: Evidence from China in 2000," *Pacific Economic Review* v9, n3 (Special Issue October 2004): 155-71.
- Ichino, Andrea, and Rudolf Winter-Ebmer (2004). "The Long-Run Educational Cost of World War II: An Example of Local Average Treatment Effect Estimation," *Journal of Labor Economics* 22(1) (January 2004): 57-86.
- Kane, Thomas J., and Cecilia E. Rouse (1993). "Labor Market Returns to Two- and Four-Year Colleges: Is a Credit a Credit and Do Degrees Matter?" NBER Working Paper No. 4268.

- Lemieux, Thomas, and David Card (1998). "Education, Earnings, and the 'Canadian G.I. Bill.'" NBER Working Paper No. 6718.
- Li, Hongbin, Pak Wai Liu, Ning Ma, and Junsen Zhang (2005). *Does Education Pay in Urban China?: Estimating Returns to Education Using Twins*, mimeo.
- Meisner, Maurice J. (1986). *Mao's China and After: A History of the People's Republic*, Collier-Macmillan: New York, 1986.
- Meng, Xin, and R. G. Gregory (2002a). Exploring the Impact of Interrupted Education on Earnings: the Educational Cost of the Chinese Cultural Revolution. Unpublished manuscript, Australia National University.
- Meng, Xin, and R. G. Gregory (2002b). "The Impact of Interrupted Education on Subsequent Educational Attainment: A Cost of the Chinese Cultural Revolution." *Economic Development and Cultural Change* 50(4): 935-959.
- Pepper, Suzanne (1996). *Radicalism and Education Reform in Twentieth-Century China*. Cambridge University Press.
- Staiger, Douglas, and James Stock (1997). "Instrumental Variables Regression with Weak Instruments." *Econometrica* 65: 557-586.
- Wooldridge, Jeffrey (2002). *Econometric Analysis of Cross Section and Panel Data*, MIT Press, Cambridge.
- Zhang, Junsen, Yaohui Zhao, Albert Park, and Xiaoqing Song (2005). Economic Returns to Schooling in Urban China, 1988 to 2001. *Journal of Comparative Economics* 33: 730-752.

Figure 1
Higher Education Entrants, Graduates, and Enrollments for the China, 1949-1990

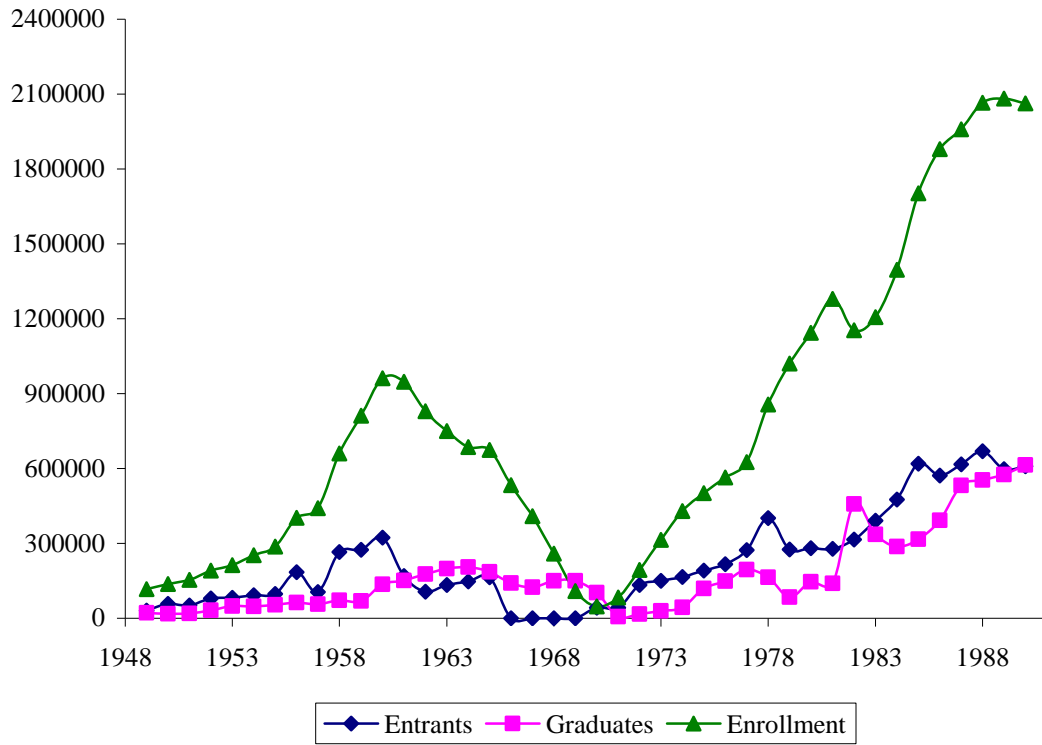


Figure 2
Educational Attainment by Age Cohort for China's Urban Population
 Evidence from the 2000 Census

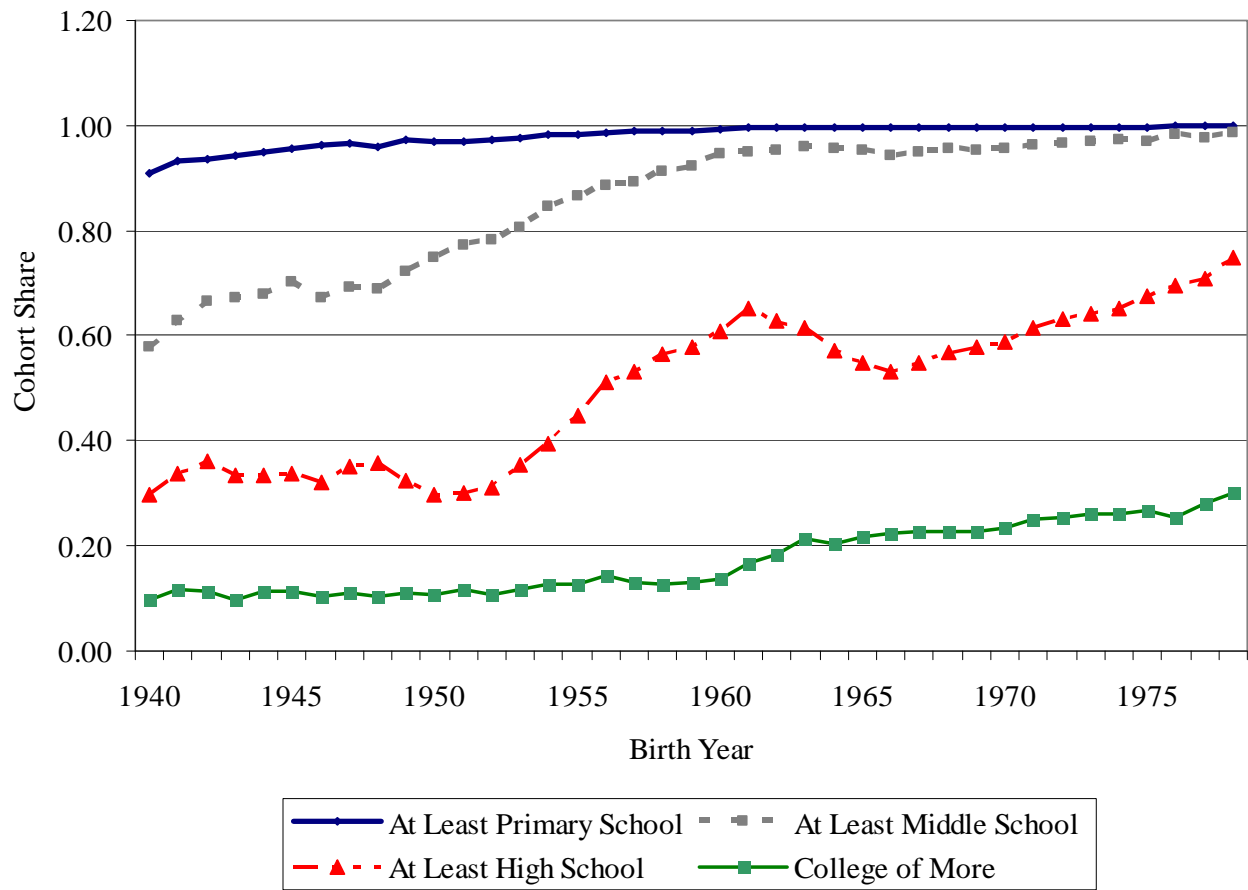
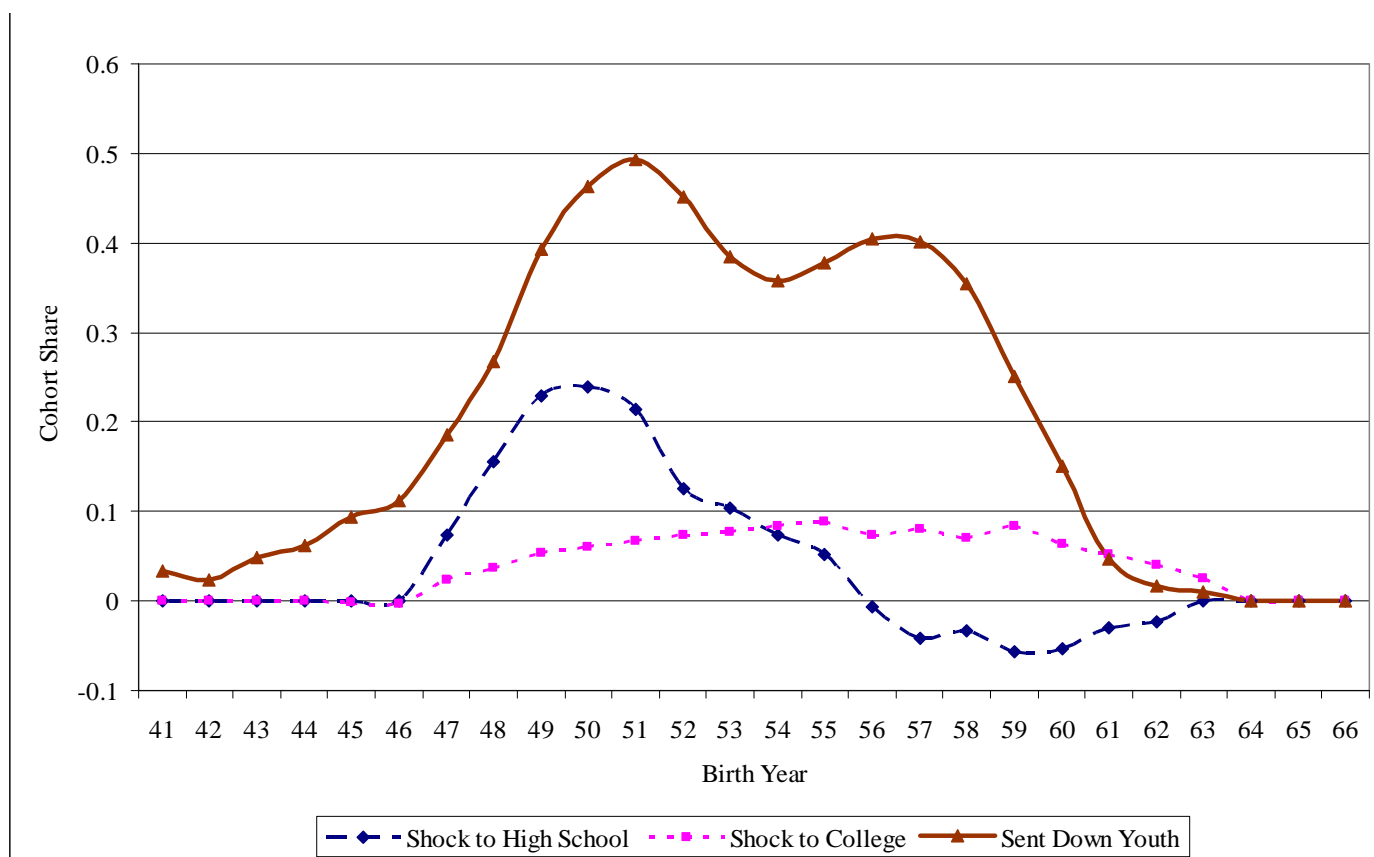
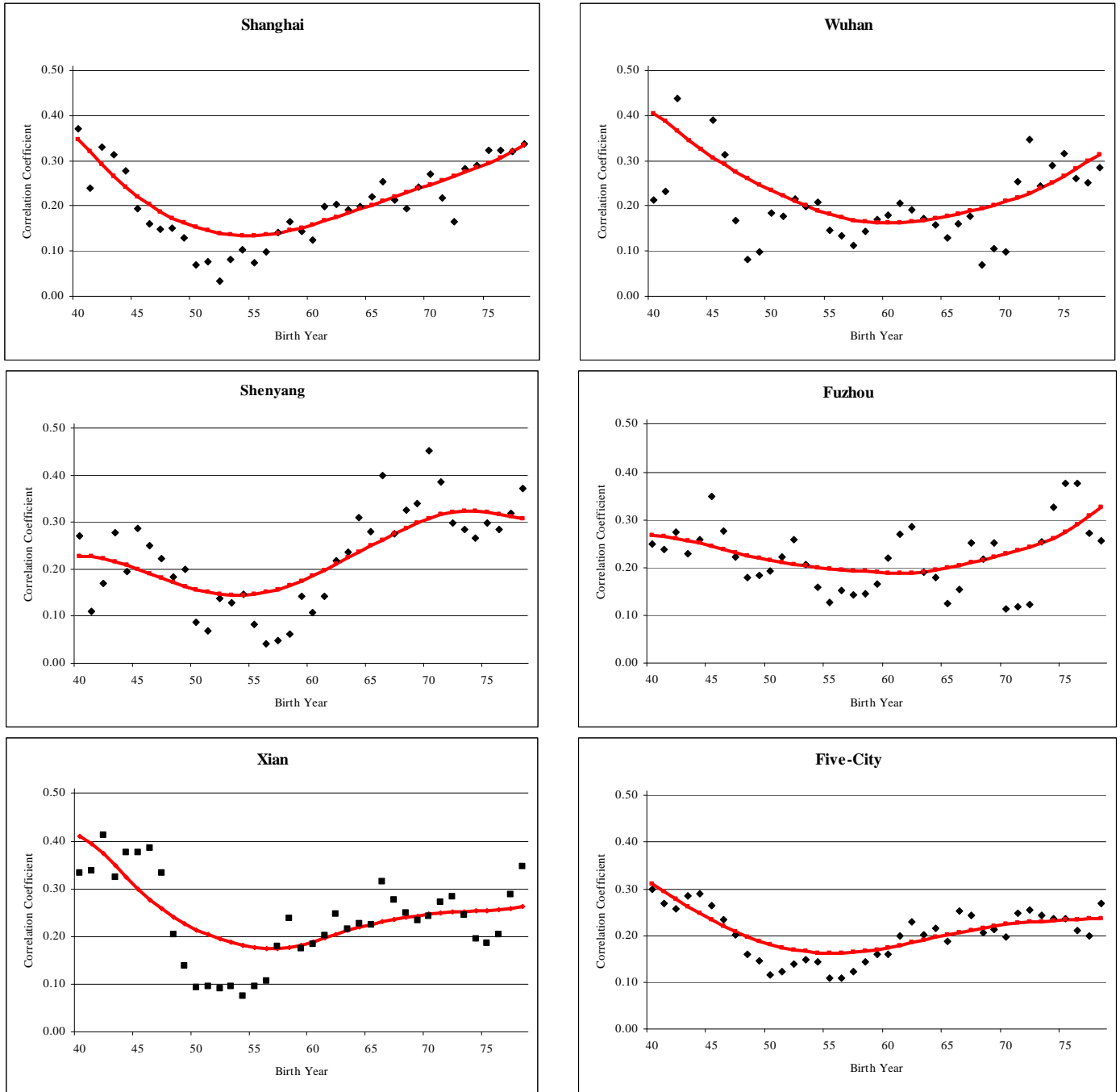


Figure 3
Evidence On Cultural Revolution Shocks



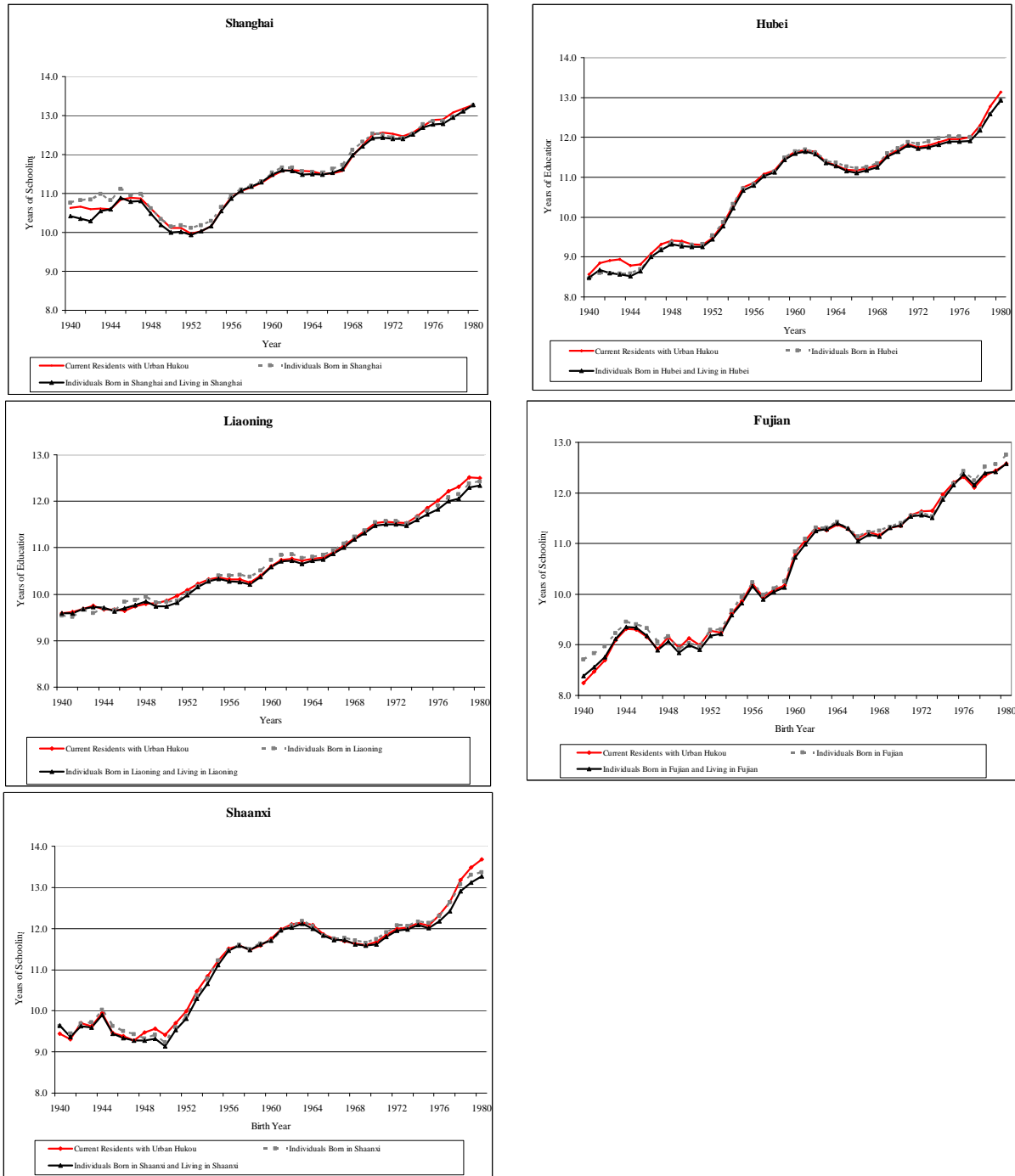
Note: A “positive” shock represents a negative shock experienced by the cohort. In the figure above, negative shocks to high school attainment reflect increases in availability of high school education during the later years of the Cultural Revolution.

Figure 4
Correlation of Educational Attainment with Father's Educational Attainment
 (Lowess Plots of Correlation Coefficients Versus Birth Cohort)



Notes: Correlation of father's education with own child's education is calculated after controlling for whether or not father was a high administrator.

Figure 5
Does Selective Migration Influence Observed Patterns in Years of Schooling of the
Urban Population in CULS Provinces?
 Evidence from the 2000 Census



Source: 2000 Population Census.

Table 1
Descriptive Statistics By Birth Year Cohort
(Standard Deviation)

	Birth Year Cohort			All
	1940 to 1947	1948 to 1963	1964 to 1978	1940 to 1978
Years of Education	11.50 (3.58)	11.12 (2.78)	12.70 (2.82)	11.70 (2.96)
Completed Middle School	0.893 (0.309)	0.952 (0.212)	0.978 (0.144)	0.957 (0.202)
Completed High School	0.647 (0.478)	0.599 (0.490)	0.796 (0.402)	0.672 (0.469)
Completed Post-Secondary	0.202 (0.402)	0.106 (0.308)	0.310 (0.462)	0.184 (0.388)
Age	56.88 (2.10)	45.06 (4.31)	30.93 (4.39)	41.00 (9.04)
Female	0.250 (0.433)	0.410 (0.492)	0.481 (0.499)	0.423 (0.494)
Height	167.95 (6.87)	166.99 (7.56)	167.02 (7.45)	167.07 (7.47)
Father's Years of Education	4.96 (4.36)	5.84 (4.47)	9.25 (4.36)	6.96 (4.74)
Mother's Years of Education	1.86 (3.33)	3.48 (4.18)	7.43 (4.41)	4.74 (4.66)
Father's Ed Missing	0.147 (0.354)	0.036 (0.186)	0.011 (0.104)	0.035 (0.185)
Mother's Ed Missing	0.143 (0.351)	0.028 (0.167)	0.011 (0.104)	0.031 (0.174)
Number of Living Siblings	2.36 (1.89)	2.69 (1.57)	1.62 (1.34)	2.29 (1.60)
No Siblings Reported	0.290 (0.454)	0.110 (0.313)	0.321 (0.467)	0.198 (0.398)
Father was a Farmer	0.264 (0.441)	0.106 (0.308)	0.102 (0.303)	0.117 (0.321)
Father was a Worker	0.382 (0.486)	0.570 (0.495)	0.452 (0.497)	0.515 (0.499)
Father was Self-Employed	0.036 (0.188)	0.022 (0.147)	0.022 (0.147)	0.023 (0.150)
Father was a Private Businessman	0.025 (0.158)	0.005 (0.075)	0.006 (0.079)	0.007 (0.086)
Father was an Administrator	0.044 (0.205)	0.120 (0.325)	0.168 (0.374)	0.131 (0.337)

Table 1 Continued on Next Page

Table 1 (Continued)
Descriptive Statistics By Birth Cohort
(Standard Deviation in Parentheses)

	Birth Year Cohort			All
	1940 to 1947	1948 to 1963	1964 to 1978	1940 to 1978
Father was a Technician	0.066 (0.249)	0.107 (0.310)	0.203 (0.402)	0.138 (0.345)
Father was a High Administrator	0.022 (0.147)	0.057 (0.233)	0.076 (0.266)	0.061 (0.240)
Father had High Technician Status	0.055 (0.228)	0.069 (0.254)	0.150 (0.357)	0.096 (0.295)
Mother was a Farmer	0.275 (0.447)	0.149 (0.356)	0.137 (0.344)	0.154 (0.361)
Mother was a Worker	0.253 (0.435)	0.554 (0.497)	0.529 (0.499)	0.522 (0.499)
Mother was Self-Employed	0.018 (0.134)	0.013 (0.115)	0.018 (0.133)	0.015 (0.123)
Mother was a Private Business Owner	0.007 (0.085)	0.001 (0.037)	0.001 (0.039)	0.001 (0.043)
Mother is/was an Administrator	0.007 (0.085)	0.022 (0.148)	0.041 (0.198)	0.027 (0.164)
Mother is/was a Technician	0.029 (0.169)	0.058 (0.234)	0.146 (0.353)	0.086 (0.281)
School Characteristics				
Attended Vocational Technical High School	0.029 (0.169)	0.029 (0.170)	0.109 (0.311)	0.057 (0.232)
Attended Magnet High School	0.136 (0.343)	0.041 (0.199)	0.125 (0.331)	0.078 (0.268)
In Magnet Class of Regular High School	0.040 (0.197)	0.064 (0.245)	0.109 (0.312)	0.078 (0.269)
Elementary School in County Seat	0.040 (0.197)	0.036 (0.186)	0.050 (0.219)	0.041 (0.199)
Elementary School in Town or Village	0.183 (0.388)	0.092 (0.290)	0.132 (0.339)	0.113 (0.317)
Middle School in County Seat	0.055 (0.228)	0.038 (0.192)	0.059 (0.236)	0.047 (0.211)
Middle School in Township or Village	0.117 (0.322)	0.071 (0.257)	0.107 (0.309)	0.087 (0.282)
High School in County Seat	0.040 (0.197)	0.027 (0.164)	0.063 (0.243)	0.041 (0.198)
High School in Township	0.025 (0.158)	0.027 (0.164)	0.039 (0.194)	0.031 (0.175)
Observations	535	2294	785	3614

Table 2
How Do Cultural Revolution Shocks Influence Ability to Attend High School and College?
Marginal Effects from Probit Models

Model DepVar	1 college ?	2 college ?	3 college ?	4 college ?	5 high?	6 high ?	7 high ?
College-Completion-by-25 Shock x Father's Education	-0.0354 (0.0322)	---	---	0.0164 (0.0423)	---	---	---
College-Completion-by-25 Shock x Father High Administrator	1.4400 (0.6000)	---	---	1.2600 (0.8100)	---	---	---
High School Shock x Father's Education	---	-0.0262 (0.0090)	---	-0.0237 (0.0097)	-0.0237 (0.0122)	---	-0.0157 (0.0129)
High School Shock x Father High Administrator	---	0.2720 (0.2020)	---	0.2150 (0.1910)	-0.0030 (0.2975)	---	-0.1730 (0.3190)
Cohort Sent Down Youth Share x Father's Education	---	---	-0.0129 (0.0068)	-0.0113 (0.0086)	---	-0.0224 (0.0095)	-0.0178 (0.0103)
Cohort Sent Down Youth Share x Father High Administrator	---	---	0.1840 (0.1200)	0.0150 (0.1574)	---	0.2790 (0.2140)	0.3210 (0.2240)
Age	0.020 (0.029)	0.019 (0.029)	0.024 (0.030)	0.022 (0.029)	-0.061 (0.045)	-0.062 (0.046)	-0.062 (0.046)
Age-Squared	0.000 (0.000)	0.000 (0.000)	0.000 (0.000)	0.000 (0.000)	0.001 (0.001)	0.001 (0.001)	0.001 (0.001)
Female	-0.335 (0.338)	-0.317 (0.338)	-0.353 (0.338)	-0.344 (0.339)	0.414 (0.402)	0.406 (0.405)	0.405 (0.405)
Height	0.000 (0.001)	0.000 (0.001)	0.000 (0.001)	0.000 (0.001)	0.003 (0.002)	0.003 (0.002)	0.003 (0.002)
Height*Female	0.002 (0.002)	0.002 (0.002)	0.002 (0.002)	0.002 (0.002)	-0.003 (0.003)	-0.003 (0.003)	-0.003 (0.003)
Father's Years of Schooling	0.009 (0.002)	0.009 (0.002)	0.010 (0.002)	0.010 (0.002)	0.015 (0.003)	0.019 (0.003)	0.019 (0.003)
Mother's Years of Schooling	0.005 (0.002)	0.005 (0.002)	0.005 (0.002)	0.005 (0.002)	0.004 (0.003)	0.004 (0.003)	0.004 (0.003)
Joint Significance of "Instruments"							
Chi-Square Statistic	5.92	8.96	4.70	16.70	3.93	6.10	8.40
Chi-Probability	0.052	0.011	0.095	0.011	0.141	0.047	0.078
Obs	3611	3611	3599	3599	3611	3599	3599

Notes:

(1) College-Completion-by-25 Shock: The deviation of average college attainment by age 25 (conditional on high school completion) for birth cohort relative to pre and post-Cultural Revolution trend.

(2) High School Shock: The deviation of average high school attainment (conditional on middle school completion) for birth cohort relative to pre and post-Cultural Revolution trend.

(3) All models include number of siblings, dummy variable for missing information on siblings and mother and father's education, and vectors of school quality and location variables and parent occupation dummy variables.

(4) All models include statistically significant (city) x (three-year birth cohort) interactions.

(5) All models show robust standard errors cluster corrected at the three-year city cohort level.

Table 3
Returns to Education
OLS Models

Panel A: Returns to Middle School, High School and College Attainment

Model	1	2	3	4
Variable	ln(wage)	ln(wage)	ln(wage)	ln(wage)
College	0.498 (0.029)	0.497 (0.029)	0.471 (0.028)	0.420 (0.030)
High School	0.256 (0.027)	0.245 (0.027)	0.216 (0.028)	0.209 (0.029)
Middle School	0.254 (0.062)	0.270 (0.063)	0.242 (0.063)	0.234 (0.064)
Other Included Regressors				
City and Birth Year Dummy Variables	Yes	No	No	No
Three Year Birth Cohort x City Dummy Variables	No	Yes	Yes	Yes
Height, Female and Height x Female	No	No	Yes	Yes
Parent Education Variables and Number of Siblings	No	No	Yes	Yes
School Quality and Parent Occupation Variables	No	No	No	Yes
N	3614	3614	3611	3611
R-Squared	0.282	0.295	0.310	0.324

Panel B: Returns to Years of Schooling -- Linear in Schooling

Model	1	2	3	4
Variable	ln(wage)	ln(wage)	ln(wage)	ln(wage)
Years of Schooling	0.096 (0.004)	0.096 (0.004)	0.089 (0.004)	0.083 (0.004)
Other Included Regressors				
City and Birth Year Dummy Variables	Yes	No	No	No
Three Year Birth Cohort x City Dummy Variables	No	Yes	Yes	Yes
Height, Female and Height x Female	No	No	Yes	Yes
Parent Education Variables and Number of Siblings	No	No	Yes	Yes
School Quality and Parent Occupation Variables	No	No	No	Yes
N	3613	3613	3610	3610
R-Squared	0.293	0.306	0.319	0.333

Table 3 (OLS Models, Continued)

Panel C: Returns to Years of Schooling -- Piecewise Linear Spline				
Model	1	2	3	4
Variable	ln(wage)	ln(wage)	ln(wage)	ln(wage)
Years of Schooling for Years>12	0.135 (0.007)	0.135 (0.007)	0.129 (0.007)	0.119 (0.007)
Years of Schooling for Years<=12	0.063 0.007	0.062 0.008	0.054 0.007	0.053 0.008
Other Included Regressors				
City and Birth Year Dummy Variables	Yes	No	No	No
Three Year Birth Cohort x City Dummy Variables	No	Yes	Yes	Yes
Height, Female and Height x Female	No	No	Yes	Yes
Parent Education Variables and Number of Siblings	No	No	Yes	Yes
School Quality and Parent Occupation Variables	No	No	No	Yes
N	3613	3613	3610	3610
R-Squared	0.302	0.316	0.329	0.341

Notes:

All models include measures of age and age-squared (age is measured from month of birth to November 2001), height (in centimeters), an indicator for gender (female=1), and height x gender. Robust standard errors are cluster corrected at the city-birth cohort level.

Table 4
Returns to Education
IV Models

Panel A: Returns to Middle School, High School and College Attainment			
Model #	1	2	3
Model	OLS	IV	IV
Dependent Variable	ln(wage)	ln(wage)	ln(wage)
College*	0.420 (0.030)	0.362 (0.160)	0.346 (0.161)
High School*	0.209 (0.029)	0.294 (0.116)	0.283 (0.115)
Middle School	0.234 (0.064)	0.192 (0.089)	0.203 (0.086)
Significance of Instruments			
College: F-Test	-	72.32	35.18
F-Probability	-	0.000	0.000
High School: F-Test	-	131.52	59.19
F-Probability	-	0.000	0.000
Over-Identification Test			
Hansen J-Statistic	-	-	2.85
Chi-Square P-Value	-	-	0.415
Observations	3611	3599	3599
R-Squared	0.324	-	-
Panel B: Returns to Years of Schooling -- Linear in Schooling			
Model #	1	2	3
Model	OLS	IV	IV
Dependent Variable	ln(wage)	ln(wage)	ln(wage)
Years of Schooling	0.083 (0.004)	0.077 (0.018)	0.075 (0.018)
Significance of Instruments			
Years of Schooling: F-Test	-	76.46	40.22
F-Probability	-	0.000	0.000
Over-Identification Test			
Hansen J-Statistic	-	0.19	3.26
Chi-Square P-Value	-	0.664	0.516
Observations	3610	3598	3598
R-Squared	0.333	-	-

Table 4 Continued on Next Page

Table 4 Continued

Panel C: Returns to Years of Schooling -- Piecewise Linear Spline			
Model	1	2	3
Variable	ln(wage)	ln(wage)	ln(wage)
Years of Schooling for Years>12	0.119 (0.007)	0.097 (0.039)	0.087 (0.039)
Years of Schooling for Years<=12	0.053 (0.008)	0.071 (0.026)	0.071 (0.026)
Significance of Instruments			
Years of Schooling >12: F-Test	-	53.46	24.85
F-Probability	-	0.000	0.000
Years of Schooling<=12: F-Test	-	159.13	67.20
F-Probability	-	0.000	0.000
Over-Identification Test			
Hansen J-Statistic	-	-	3.21
Chi-Square P-Value	-	-	0.361
Observations	3610	3598	3598
R-Squared	0.341	-	-

Notes To Table 3:

(1) All models include jointly significant three year birth-cohort X city dummies, school quality and location variables, parent occupation dummies and educational attainment variables, number of siblings, age and age-squared (with age measured from month of birth to November 2001), gender (female=1), height, and gender x height, and jointly significant three-year birth cohort x city dummy variables. We report robust standard errors that are cluster corrected at the three-year birth cohort x city level.

(2) Instruments for high school and college in model (2) are predicted probabilities of college completion calculated from model (4) and of high school completion from model (7) in Table 1. Note, this model is exactly identified in Panels A and C, and so we do not report an over-identification test.

(3) Instruments in model (3) are predicted probabilities of high school attainment from models (5) and (6) of Table 1, and predicted probabilities of college attainment using models (1), (2) and (3) from Table 1.

Table 5
Test of Potential Significance of Alternative Channels for Cultural Revolution Effects
F-Statistics on Instruments from Alternative First-Stage Regressions

Model		1	2	3
		OLS	OLS	OLS
Instrument Set		Chronic Illness?	Physical Deformity?	Pscho- Social Health
Instrument Set 1: Predicted Shocks to High School and College From Models (6) and (3) of Table 1	F-Test	0.93	0.21	1.45
	F-Probability	0.395	0.808	0.236
R-Squared		0.1211	0.107	0.078
Instrument Set 2: Predicted Shocks to High School and College From Models (1), (2), (3), (7) and (8) of Table 1	F-Test	0.76	0.81	1.14
	F-Probability	0.579	0.542	0.317
R-Squared		0.122	0.107	0.079

Notes:

(1) All models are estimated using 3599 observations.

(2) Each model above is estimated as a reduced form with predicted shocks to high school and college included as regressors. All models include the non-shock control variables included the models of Table 1: number of siblings, dummy variable for missing information on siblings and mother and father's education, vectors of school quality and location variables, parent occupation dummy variables, and (city) x (three-year birth cohort) interactions.

(3) Instrument Set 1: Predicted probabilities from models (4) and (7) of Table 1.

(4) Instrument Set 2: Predicted probabilities from models (1), (2), (3), (5) and (6) of Table 1.