

POVERTY & SHARED PROSPERITY AT A GLANCE

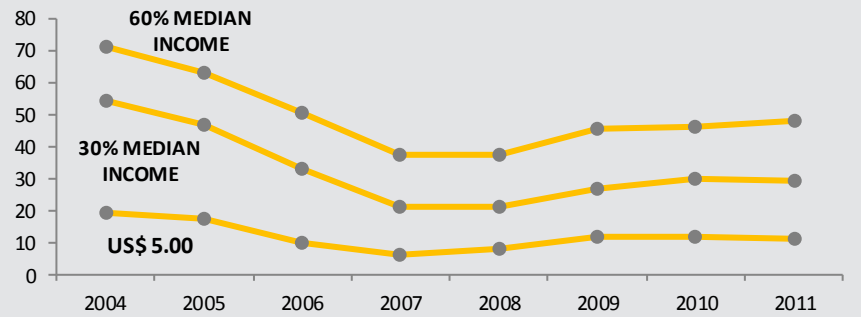
LATVIA



TRENDS

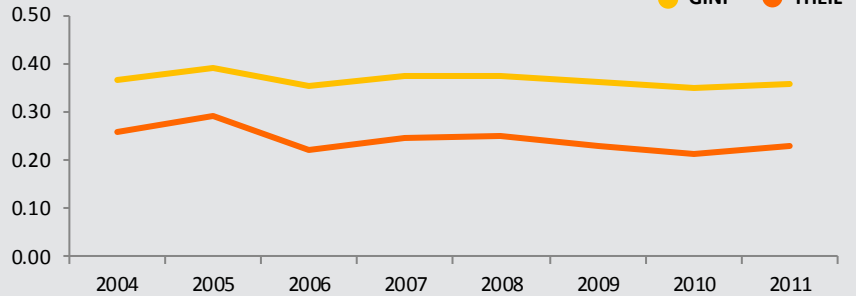
POVERTY HEADCOUNT RATIO, 2004-2011

Source: ECATSD using EUSILC.



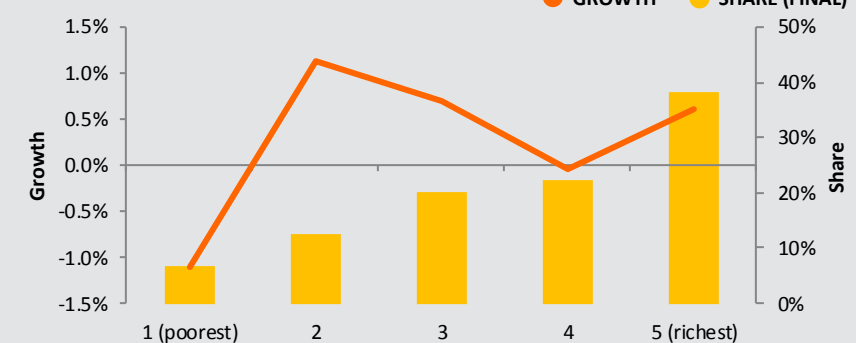
INEQUALITY INDICES, 2004-2011

Source: ECATSD using EUSILC.



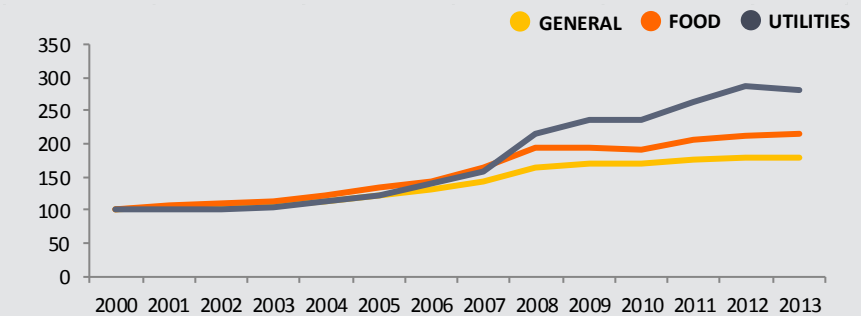
INCOME/CONSUMPTION GROWTH PER CAPITA BY QUINTILE, 2006-2011

Source: ECATSD using EUSILC.

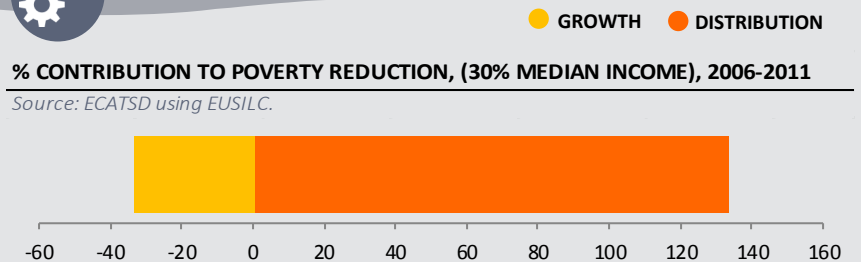


CONSUMER PRICE INDEX, 2000-2013

Source: Central Statistical Bureau of Latvia. Note: 2000 =100.



CONTRIBUTORS



Public Disclosure Authorized

GDP per capita, PPP (current international \$) ¹	21,905 (2012)
GDP per capita, Atlas method (current US\$) ¹	14,120 (2012)
Rural population (% of total population) ¹	32 (2012)
National strategy for statistical development	2008-2010

POVERTY

Population living below national line (%) ¹	19.40 (2011)
Population living below 30% median income (US\$ 4.21)* ²	8.12 (2011)
Population living below 60% median income (US\$ 8.43)* ²	29.66 (2011)
Population living below 80% median income (US\$11.24)* ²	48.52 (2011)
Population living above US\$ 50.00 (%) ²	1.57 (2011)
Population living in multidimensional poverty (%) ³	1.60 (2003)

INEQUALITY

Gini index ²	0.36 (2011)
Theil index ²	0.23 (2011)

SHARED PROSPERITY

Welfare definition	Income
Period of analysis	2006-2011
Income/consumption growth of bottom 40 ²	0.36%
Income/consumption growth total population ²	0.44%
Income/consumption growth of top 60 ²	0.45%
GDP growth ¹	0.16%
Growth of private consumption ¹	

Sources: ¹ WDI. ² ECATSD using EUSILC. ³ UNDP.
 Note: Refers to median income in 2008, 2005 PPP.

PERFORMANCE

Value	Global		ECA		Conditional Years	
	Global	Conditional	ECA	Conditional		
Poverty change (US\$ 2.50)* ¹	-0.02%	25	12	32	18	2004-2010
Income/consumption growth of the bottom 40%** ¹	0.35%	13	31	23	61	2006-2011
UNDP Human Development Index ²	0.814	44/186	-	8/29	-	2012

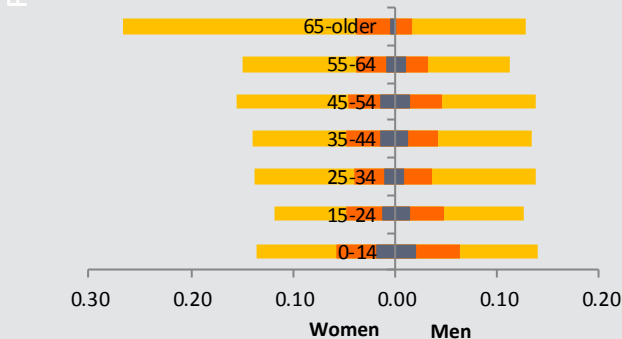
*Annualized. Benchmarking numbers present percentile performance among indicated distribution group.
 **Annualized. Benchmarking numbers present percentile performance among indicated distribution group.
 *Conditional** refer to performance when controlling for poverty in the initial period, GDP per capita, fragility index, landlocked country, country growth rate, global growth rate, and frequency of poverty data.
 **Annualized. Benchmarking numbers present percentile performance among indicated distribution group.
 *Conditional** refer to percentile performance when controlling for type of welfare measure, GNI per capita
 2012. Gini in first period, poverty head count in first period, and country growth rate.
 Sources: ¹ ECATSD using EUSILC. Azevedo and Nguyen (2014). ² UNDP (2013).

DEMOGRAPHICS

- LIVING BELOW 30% MEDIAN INCOME
- LIVING BETWEEN 30-60% MEDIAN INCOME
- LIVING ABOVE 60% MEDIAN INCOME

POPULATION BY AGE AND POVERTY STATUS, 2011 (MILLIONS)

Source: ECATSD using EUSILC.





lished at 60% of the equivalized median income after social transfers. In the income year 2012, the most recent year of published figures, 19.4% of the population lived at risk of poverty*. The most recent national strategy for statistical development in Latvia spans the years 2008-2010. The most recent SILC survey available for the Republic of Latvia in the World Bank's regional internal microdata catalog, the ECA Data Portal, is for the survey year 2012.

*Source: Central Statistical Bureau (CSB) of Latvia

KEY INDICATORS

	Total	30% Median Income		60% Median Income		Relative Group		Year
		Poor	Non-Poor	Poor	Non-Poor	Bottom 40%	Top 60%	
Demographics								
Share of total population (%)	100%	30%	70%	49%	51%	40%	60%	2012
% of group living in rural areas	51%	69%	49%	63%	44%	61%	42%	2012
% of group living in urban areas	49%	31%	51%	37%	56%	39%	58%	2012
% of households with 4+ members	20%	26%	20%	30%	17%	28%	16%	2012
Dependency Ratio: Children (0-14)/all HH members	0.20	0.32	0.19	0.29	0.16	0.27	0.16	2012
Dependency Ratio: Elderly 65+/all HH members	0.29	0.04	0.32	0.13	0.37	0.19	0.36	2012
Share of households with Female Head (%)	60%	54%	61%	57%	61%	60%	60%	2012
Average HH size	2.41	2.66	2.39	2.87	2.26	2.76	2.23	2012
Education								
Proportion of group with None/<Primary (%)	3%	5%	2%	4%	2%	4%	2%	2012
Proportion of group with Basic (%)	23%	41%	22%	34%	18%	32%	17%	2012
Proportion of group with Gen sec (%)	46%	43%	46%	47%	45%	48%	43%	2012
Proportion of group with Spec sec (%)	7%	6%	7%	6%	7%	6%	7%	2012
Proportion of group with Tertiary sec (%)	22%	5%	23%	9%	28%	10%	31%	2012
Access to Economic Opportunities								
Labor force participation rate (% of population aged 15-64)	75%	69%	76%	70%	78%	70%	79%	2012
Unemployment (% of population aged 15-64)	19%	60%	16%	39%	11%	34%	9%	2012
Self-employed (% of population aged 15-64)	8%	17%	7%	11%	7%	9%	7%	2012
Income								
Share of income from pensions (%)	32%	11%	34%	22%	35%	28%	34%	2011
Share of income from labor (%)	55%	40%	56%	50%	57%	49%	59%	2011
Access to Basic Services								
Central heating (% of HHS)								
Access to gas (% of HHS)								
Access to piped water in house (% of HHS)								
Access to sewerage in house (% of HHS)								
Access to toilet in house (% of HHS)	84%	60%	86%	70%	88%	73%	90%	2012
Access to electricity (% of HHS)								
Refrigerator (% of HHS)								
Home phone (% of HHS)								
Cell phone (% of HHS)	96%	90%	97%	95%	97%	94%	98%	2012
Personal computer (% of HHS)	61%	48%	62%	58%	62%	57%	63%	2012
Less than 1.5 people per room (% of HHS)	92%	83%	92%	85%	94%	86%	94%	2012

Source: ECATSD using EUSILC.

Note: Income data collected in the survey year (t) refers to income in year (t-1). Poverty and Shared Prosperity indicators are reported using the income reference year (t-1). Poverty profiling data presented in the Key Indicators table is based on poverty status in the income year (t-1) and characteristics in the survey year (t).

ABOUT THE DATA

Where possible, data is from harmonized regionally comparable sources. All numbers in this document are produced using the 2005 PPPs, as the use of the 2011 PPPs in the calculation of global poverty estimates still requires additional analysis. This note was produced by the ECA Team for Statistical Development in the Poverty Global Practice at the World Bank Group. All indicators are as of 09/08/14.

QUESTIONS?

Contact the Europe and Central Asia Team for Statistical Development (ecatds@worldbank.org).