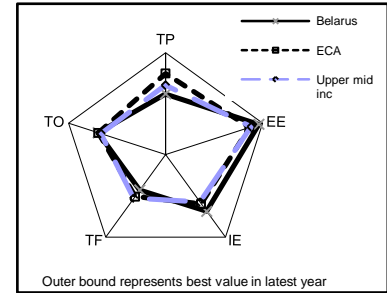


Belarus: Trade-at-a-Glance Table

2008 GDP (millions)	2008 GDP per capita	2008 Share in World Trade	2008 Trade per capita	Membership		No. of FTAs/ EIAs	
				GATT	WTO	Goods	Services
\$60,302	\$6,229	0.21%	\$8,167	No	Accession	4	0

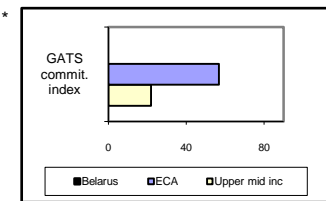
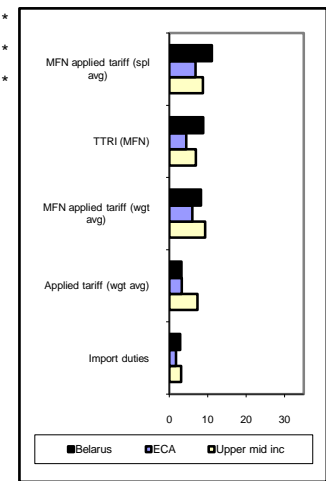
TRADE PERFORMANCE[‡]

	Ranking	Decile
TRADE POLICY (TP) (out of 125)	87	7
EXTERNAL ENVIRONMENT (EE) (out of 125)	14	2
INSTITUTIONAL ENVIRONMENT (IE) (out of 183)	58	4
TRADE FACILITATION (TF) (out of 155)
TRADE OUTCOME (TO) (out of 157)	42	3

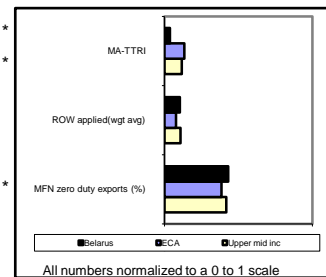


[‡] Rankings are based on the representative indicators (in bold) in each group below for the latest year

TRADE POLICY (TP)	1995-99 [^]	2000-04 [^]	2005-08 [^]	Latest
Tariff Trade Restrictiveness Index TTRI (MFN applied tariff)		9.8	8.6	8.8 *
TTRI (applied tariff including preferences)		..	8.6	8.8 *
OTRI (Overall TRI, applied tariff incl. prefs.+NTMs)		..	16.7	16.9 *
MFN applied tariff - simple avg (%)	12.4	11.0	11.2	11.1
Dispersion (coefficient of variation)	0.8	0.5	1.1	1.1
Maximum rate (excl. alcohol and tobacco)	162.5	201.6
Agriculture - simple avg (%)	9.9	10.8	13.3	13.8
Nonagriculture - simple avg (%)	12.7	11.0	10.9	10.7
MFN applied tariff - trade weighted avg (%)	9.2	8.9	8.4	8.3
Applied tariff (incl. prefs.) - trade weighted avg (%)	9.2	8.9	5.8	3.1
Agriculture	10.1	11.0	13.2	8.5
Nonagriculture	9.1	8.6	5.1	2.7
Applied tariff (incl. prefs.) - production weighted avg (%)
MFN applied tariff escalation (finished % minus raw %)	5.0	4.6
Agriculture	10.4	11.0
Nonagriculture	4.1	3.7
Import duties (% of imports)	2.5	2.4	3.0	2.9 *
Tariff overhang (MFN bound minus MFN applied rate,%)
Bound tariff frequency ratio (% of total lines)	..	0.0
Non-ad valorem tariff frequency ratio (%)	0.0	1.4	16.0	16.7
Non-tariff measures frequency ratio (%)	1.1
Anti-dumping initiations	0.0	0.0	0.0	0.0
Overall GATS commitment index (0-100, best)



EXTERNAL ENVIRONMENT (EE)	1995-99 [^]	2000-04 [^]	2005-08 [^]	Latest
Market Access-TTRI (MA-TTRI, applied tariff incl. prefs.)			0.9	0.8 *
MA-OTRI (applied tariff incl. prefs. and NTMs)			2.2	2.1 *
ROW applied tariff (incl. prefs.) - trade weighted avg (%)	6.0	3.5	1.9	2.8
Agriculture	22.0	17.4	5.9	8.9
Nonagriculture	5.1	2.8	1.8	2.6
MFN zero-duty exports (% of total exports)	20.6	29.7	40.0	45.2 *
Exports to FTA / CU partners (% of total exports)	60.9	52.9	44.4	43.7
Anti-dumping initiations faced	0.6	1.6	0.8	2.0
Real effective exchange rate (% change, +=apprec.)	1.7	-7.1	-3.3	-2.8

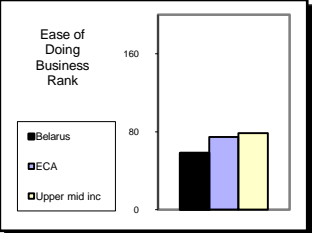


All data are as of January 2010 and are drawn from the World Trade Indicators 2009/10 Database. The database, Trade-at-a-Glance Tables, Country Trade Briefs and User Guide, are available at <http://www.worldbank.org/wti>.

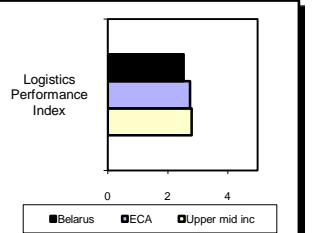
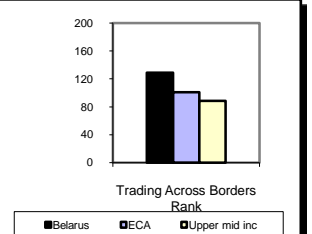
[^] Indicators shown are period averages. "Latest" indicates 2008, when not available, 2006 or 2007 (noted by *).

EAP: East Asia and Pacific; ECA: Europe and Central Asia; LAC: Latin America and the Caribbean; MNA: Middle East and North Africa; SAS: South Asia; SSA: Sub-Saharan Africa; GATT: General Agreement on Tariffs and Trade; WTO: World Trade Organization; FTA: free trade agreement; EIA: economic integration arrangement; NTM: nontariff measures; ROW: rest of the world; CU: customs union; .. indicates missing value.

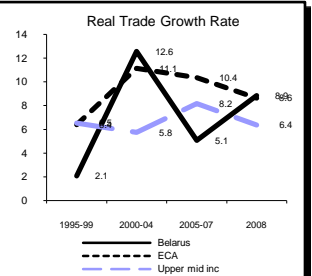
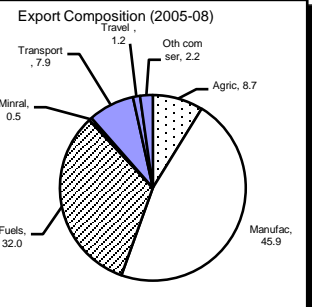
INSTITUTIONAL ENVIRONMENT (IE)				
	2006	2007	2008	2009
Ease of Doing Business (rank out of 183)	..	115	82	58
Starting a business (rank)	..	121	98	7
Enforcing contracts (rank)	..	15	14	12
Closing a business (rank)	..	72	74	74
World Governance Indicators (WGI)	2005	2006	2007	2008
Regulatory Quality (-2.5 to +2.5, best)	-1.51	-1.67	-1.56	-1.24
Rule of Law (-2.5 to +2.5, best)	-1.06	-1.22	-1.10	-1.00
Control of Corruption (-2.5 to +2.5, best)	-0.87	-0.75	-0.86	-0.79



TRADE FACILITATION (TF)				
	1995-99 [^]	2000-04 [^]	2005-08 [^]	Latest
Logistics Performance Index (LPI, 1 to 5 best)	2.5	2.5 *
Efficiency of customs and other border procedures	2.7	2.7 *
Quality of transport and IT infrastructure	2.6	2.6 *
Ease of arranging competitively-priced shipments	2.1	2.1 *
Logistics competence	2.1	2.1 *
Ability to track and trace shipments	2.7	2.7 *
Timeliness of shipments	3.0	3.0 *
Trading Across Borders (Doing Business, rank out of 183)	134	129
No. of documents required for export	8	8
No. of days required for export	23	16
Cost to export (US\$ per container)	1,697	1,772
No. of documents required for import	8	8
No. of days required to import	28	21
Cost to import (US\$ per container)	1,697	1,770
Telephones (fixed + mobile) per 100 people	22.9	38.0	93.7	109.6 *
Internet users per 100 people	0.1	11.3	29.0	29.0 *
Export credit insured exposures - short term (% of goods export)	5.0	6.0

TRADE OUTCOME (TO)^f				
	1995-99 [^]	2000-04 [^]	2005-08 [^]	Latest
Real growth in trade of goods and services (%)^{##}	2.1	12.6	5.1	8.9
Exports	3.7	11.3	5.5	7.5
Imports	0.8	13.8	4.7	10.1
Goods	35.4	15.4	17.0	44.0
Services	34.9	18.3	13.5	14.9
Nominal growth in trade of goods and services (%)	21.6	20.7	24.9	36.2
Exports	23.1	20.0	24.4	35.1
Imports	20.2	21.4	25.6	37.2
Trade integration (trade as % of GDP)	99.6	134.3	125.7	131.1
Goods balance (% GDP)	-7.4	-7.6	-6.8	-10.1
Food balance (% GDP)	-2.7	-2.4	-1.0	-1.1
Services balance (% GDP)	3.0	3.4	2.7	2.8
Goods share of total exports (%)	88.2	87.0	88.6	88.6
Services share of total exports (%)	11.8	13.0	11.4	11.4
Goods exports as a share of world goods exports (rank)**	63	60	61	58
Services exports as share of world services exports (rank)**	82	76	75	68
Foreign Direct Investment (FDI) inflows (% of GDP)	1.7	1.0	2.4	3.6
Total remittances inflows (% GDP)	1.7	1.1	0.8	0.7
Export product concentration index (0-100, most)	10.2	17.6	30.2	31.3
Export market concentration index (0-100, most)	60.6	51.6	38.6	34.2
Top 5 export markets (shares)	Russian (32%), Netherlands (17%), Ukraine (8%), Latvia (7%), Poland (5%)			
Top 5 import markets (shares)	Russian (60%), Germany (7%), Ukraine (5%), China, People's Rep. of (4%), Poland (3%)			
Top 5 export products (SITC 3 digit-shares)	334-Hvy petrol (34%), 562-Manu. fertilizers (11%), 782-Goods/serv vehics (3%), 722-Tractors (3%), 333-Petrol, crude (3%)			
Top 5 import products (SITC 3 digit-shares)	333-Petrol, crude (25%), 343-Natural gas (7%), 334-Hvy petrol. (4%), 781-Cars (2%), 673-Flat rolled iron/s/ prod (2%)			

[^] Indicators shown are period averages (except for Trading Across Borders rank: 2005-08 reflects 2008). "Latest" indicates 2008 (for Doing Business, LPI 2009), when not available, 2006 or 2007 (noted by *).

^f Outcome indicators are from the World Bank Development Data Group, Prospects Group, UNCTAD and COMTRADE.

^{##} In constant 2000 US dollars. ** Rank is based on average annual world share for each period. The sample sizes are 173, 179, 180 and 173 countries, respectively.