

Public Disclosure Authorized

LAND AND RIGHT-OF-WAY ACQUISITION REPORT

North and South Pasig Sewerage System

13 April 2020

Introduction

The North and South Pasig Sewerage System is the nominated project of Manila Water Company, Inc. under the Metro Manila Wastewater Management Project (MWMP). The project has two (2) components: 1) Ilugin STP and 2) Sewer Network.

The sewer network contracts are at various stages of development. During the detailed design of the sewer network, several lots were identified to be acquired through willing buyer-willing seller approach for the locations of pump and lift stations, and pipelaying. For the pipelaying in closed communities, it requires to secure permit through right-of-way agreements to list down the conditions of the homeowner's associations.

This Report covers the remaining three segments of the subproject which were not included in the first Land Acquisition and Right-of Way Report prepared for the subproject in October 2017. The first report has been approved by World Bank and disclosed in the websites of Manila Water and World Bank.

NORTH PASIG PACKAGE 2 GRAVITY SEWER



Figure 1 North Pasig 2 Gravity Sewer Network Alignment (encircled)

The North Pasig Package 2 Gravity Sewer Network contract is a component of the sewerage system. This covers the cities of Mandaluyong and Pasig. The sewage flow being captured by this network will be conveyed through a pump station and force main (North Pasig 2 Pump Station and Force Main, a link project to the nominated projects under MWMP) and will be captured by the North Pasig 1 Sewer Network. See Figure 1. This includes pipelaying for diameter ranging from 200 mm to 600 mm. This contract covers the cities of Mandaluyong and Pasig. The roads where the pipes will be laid are main

thoroughfare. It requires combination of open trench and trenchless method to avoid inconvenience to motorists.

NORTH PASIG PACKAGE 3

This contract package consists of small pipe laying works from 200 mm diameter to 450 mm diameter. These lines are connected to the North Pasig Package 1 sewer network. The pipes are laid under the road.

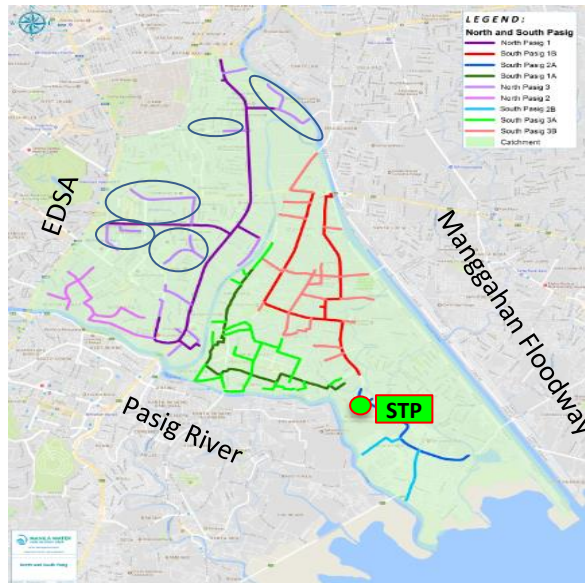


Figure 3 North Pasig 3 Laterals (encircled)

SOUTH PASIG PACKAGE 2A



Figure 1 South Pasig 2A (within blue circle)

South Pasig 2 is composed of 5 kilometer sewer network and lift station. This sewer network package was split into three contracts, namely, 1) South Pasig 2A and 2) South Pasig 2 Ilugin Creek Crossing and 3) South Pasig 2B.

South Pasig 2A covers the municipality of Taytay, Rizal and Barangay Pinagbuhatan, Pasig City. The pipe diameter ranges from 200 mm to 900 mm. These are laid under the main thoroughfare, Ejercito Avenue, Taytay and A. Sandoval Avenue, Barangay Pinagbuhatan, Pasig City.