

Does Automation in Rich Countries Hurt Developing Ones?

Evidence from the U.S. and Mexico

Erhan Artuc
Luc Christiaensen
Hernan Winkler



WORLD BANK GROUP

Social Protection and Jobs Global Practice

&

Development Research Group

February 2019

Abstract

Following a couple of decades of offshoring, the fear today is of reshoring. Using administrative data on Mexican exports by municipality, sector and destination from 2004 to 2014, this paper investigates how local labor markets in Mexico that are more exposed to automation in the U.S. through trade fared in exports and employment outcomes. The results show that an increase of one robot per thousand workers in the U.S.—about twice the increase observed between 2004–2014—lowers growth in exports per worker from Mexico to the U.S. by 6.7 percent. Higher exposure

to U.S. automation did not affect wage employment, nor manufacturing wage employment overall. Yet, the latter is the result of two counteracting forces. Exposure to U.S. automation reduced manufacturing wage employment in areas where occupations were initially more susceptible to being automated; but exposure increased manufacturing wage employment in other areas. Finally, the analysis also finds negative impacts of exposure to local automation on local labor market outcomes.

This paper is a product of the Social Protection and Jobs Global Practice and the Development Research Group. It is part of a larger effort by the World Bank to provide open access to its research and make a contribution to development policy discussions around the world. Policy Research Working Papers are also posted on the Web at <http://www.worldbank.org/research>. The authors may be contacted at hwinkler@worldbank.org.

The Policy Research Working Paper Series disseminates the findings of work in progress to encourage the exchange of ideas about development issues. An objective of the series is to get the findings out quickly, even if the presentations are less than fully polished. The papers carry the names of the authors and should be cited accordingly. The findings, interpretations, and conclusions expressed in this paper are entirely those of the authors. They do not necessarily represent the views of the International Bank for Reconstruction and Development/World Bank and its affiliated organizations, or those of the Executive Directors of the World Bank or the governments they represent.

Does Automation in Rich Countries Hurt Developing Ones? Evidence from the U.S. and Mexico*

Erhan Artuc[†]

Luc Christiaensen[‡]

Hernan Winkler[§]

*We are grateful to Paulo Bastos, Alvaro Gonzalez, Leonardo Iacovone, Daniel Lederman, Andrew Mason, Bob Rijkers, David Robalino, Carlos Rodriguez-Castelan and Joana Silva for helpful comments and discussions. We are thankful to Isidro Soloaga for sharing the file to construct Mexican functional territories, and to Lourdes Rodriguez Chamussy for sharing the correspondence tables for the Mexican occupational classifications. We remain responsible for any errors.

[†]The World Bank, eartuc@worldbank.org

[‡]The World Bank, lchristiaensen@worldbank.org

[§]The World Bank, hwinkler@worldbank.org

1 Introduction

There is a growing body of literature on the impacts of labor-replacing technologies. Most of this literature is focused on developed economies, since they are at the frontier of adoption of new technologies, and concerns are rising about the negative impacts on workers. The findings of this empirical literature show that while these technologies can bring about significant efficiency gains (Graetz & Michaels 2017), they can also have negative impacts on employment outcomes (Acemoglu & Restrepo 2017).

However, evidence for developing countries is scarce. This is driven not only by data constraints, but also because poorer countries in general have not been as successful as their richer counterparts at adopting new technologies at such a large scale. This article argues that developing countries can still experience some disruptive effects by being exposed to automation in developed economies. For example, automation in the US may reduce the demand for Mexican goods if it allows to reduce marginal costs and prices of US products. If Mexico's exports to the US decline as a result, this could in turn displace Mexican workers. In other words, automation in the US can substitute away workers in Mexico by disrupting trade.

Concerns about the destruction of jobs in developing countries that were originally offshored from high-income economies – a process known as reshoring – are rising. Several media outlets have reported that firms in the United States and Europe have started to repatriate some of their production processes.¹ However, empirical evidence about the existence and magnitude of this phenomenon is scarce. De Backer et al. (2016) report that even though company surveys and anecdotal evidence suggest that the reshoring movement is gaining steam, empirical evidence does not support such claims. In contrast, Allen (2017) argues that economic history suggests that some of the concerns about reshoring are warranted. While the first industrial revolution brought progress to Western economies, many

¹See, for instance, Coming home (The Economist, January 19th 2013) and Reshoring boosts manufacturing hopes (Financial Times, March 21st 2012).

jobs in the textile industry from India to Morocco were destroyed since their wages were no longer competitive when compared to the cost reduction associated with mechanization.

In this article, we examine the impacts of robotization in the US on exports from Mexico to the US. As articulated in the theoretical model (forthcoming), automation in the US may affect the demand for Mexican goods through different channels. First, automation could improve the efficiency of firms in the tradable sector, which may foster the demand for complementary goods from Mexico. This increase in efficiency could, at the same time, increase the demand for Mexican goods through an income effect. Second, automation may improve the comparative advantage of the US in certain sectors, which would reduce the demand for Mexican products. Third, automation may lower the prices of American intermediate inputs imported by Mexico, which may boost the production and export levels of the latter.

Using export data at the local labor market (LLM) level in Mexico, this article studies if higher exposure to US automation through trade lowered local exports to the US from 2004 to 2014. Exposure of Mexican areas to US automation is defined as the increase in the number of robots per thousand workers by sector in the US, weighted by the initial exports of each sector at the LLM level in Mexico. The larger the increase in the number of robots and the higher the share of exports from that sector, the higher the exposure to US automation. The results indicate a strong and robust negative relationship between exposure to US automation and exports from Mexico to the US. This suggests that the substitution effect of automation seems to be stronger than the complementary and efficiency channels. These findings are consistent with automation increasing the pace of reshoring and/or lowering the pace offshoring.

Given that both economies are highly integrated, there are valid concerns about the endogeneity of the exposure to automation in the US. For instance, industries that face higher import competition from Mexico may be more likely to adopt robots to become more competitive. To overcome this challenge, we use an instrumental variable similar in spirit to

that of Acemoglu & Restrepo (2017) by constructing a measure of exposure to automation in Europe. While automation patterns in Europe are highly correlated with those of the US, trade between Mexico and Europe represents less than 5 percent of Mexico's total trade. Thereby, it is unlikely that patterns of automation in Europe respond to changes in Mexico's tradable sectors.

However, there could still be a concern about the exclusion restriction not being satisfied if unobservable factors such as secular sectoral trends or trade links with other large economies could influence both Mexico's exports and automation in Europe. We address these concerns using several alternative specifications and robustness checks. We show that the results are robust to controlling for exposure to domestic automation, the exclusion of the automotive sector, controlling for the initial share of manufacturing jobs in the area and eliminating outliers, among other tests. They are also not affected by exposure to ICT adoption in the US, exposure to Chinese imports and the initial degree of job offshoreability in the local area.

In addition, we investigate the labor market impacts of exposure to US automation. We first focus on employment in the tradable sector (agriculture, mining and manufacturing) as this would capture the first-order impacts. The results show that the ratio of employment in the tradable sector to population is not affected by exposure to US automation, or by the decline in exports caused by US automation. However, this average effect hides substantial heterogeneity across LLMs. Areas that initially had a relatively higher share of manufacturing jobs susceptible to being replaced by automation did experience a decline in the ratio of manufacturing employment to population. This could be driven by areas intensive in unskilled jobs that were initially offshored from the US but that are more susceptible to being reshored due to automation, since jobs susceptible to being offshored also tend to be susceptible to being automated. In contrast, areas where the fraction of jobs susceptible of being automated was low, experienced an increase in the manufacturing employment to population ratio. We argue that this latter effect could be explained by the fact that since jobs

were unlikely to be automated in these areas to begin with, firms in these regions may have had better access to a skilled labor force to adopt new technologies to cope with the external shock. However, US automation did not have any impacts on the total wage employment to population ratio, even in areas with a high job replaceability index. This could be because the direct impact on manufacturing employment was either too small, because of positive spillover effects on the non-tradable sector - if, for example, firms in services benefit from accessing lower cost inputs from the US - and/or because displaced manufacturing workers could easily move to the non-tradable sector.

In contrast, we find strong and robust impacts of domestic automation on total wage employment (that is, in the tradable and non-tradable sectors). In particular, increasing exposure to automation in Mexico has a negative impact on the ratio of wage employment to population. However, it does not affect total employment. Instead, the informal sector expands, suggesting that displaced workers are more likely to find an informal job (as a self-employed, day laborer or family worker) than to become jobless. The role of the informal sector is an important factor when considering the disruptive impacts of automation on developing countries. While an informal job is often associated with under-employment in low-productivity jobs paying low earnings (Perry et al. 2007), it may also help workers to cope with job displacement. We also find that these negative labor market effects of local automation are larger for the unskilled (particularly high school graduates), men and workers aged 44 years or younger. Finally, exposure to local automation seems to exert upward pressure on inequality, particularly between workers at the richest 90th and poorest 10th percentile of the monthly wage distribution.

This article focuses on the US and Mexico case because they provide a unique setting of two neighboring economies at markedly different stages of economic development and distance to the technology frontier that share important links through trade. In particular, Mexican exports to the US represent over 80 percent of total exports. Moreover, a significant share of these trade flows is concentrated in sectors that are automating rapidly in the US,

such as the automotive sector. The tradable sector is an important source of economic growth and jobs for many regional economies in Mexico. Thereby, any permanent changes to trade flows between these two economies can have profound consequences in Mexico. The results of this article highlight that while the employment impacts of foreign and domestic automation are still small, they hit unskilled workers the most.

The rest of this article is structured as follows. Section 2 provides a literature review and Section 3 presents the econometric model. Section 4 describes the data sources and stylized facts on automation, trade and employment patterns. Section 5 presents the econometric results, with Section 5.1 focusing on the impacts of US automation on Mexican exports, and Section 5.2 focusing on the impacts of US and Mexican automation on LLM outcomes. Finally, Section 6 concludes.

2 Literature Review

This article contributes to the empirical literature on the extent of reshoring and its drivers, which is scarce. Since reshoring is not typically captured by official statistics, researchers have to rely on alternative ways to measure it. De Backer et al. (2016) report different estimates of the share of companies in Europe and the United States that are reshoring their production processes. Data from manufacturing surveys show that around 4 percent of companies in selected European economies moved part of their activities back home between 2010 and 2012 (Dachs & Zanker 2015). However, the extent of new offshoring processes continues to be substantially more important than that of reshoring. Evidence for the United Kingdom suggests that about 15 percent of firms are engaged in reshoring, while that figure is about 20 percent for large companies in the US. Reasons reported for reshoring vary. Dachs et al. (2017) find that large companies in high-tech sectors are more likely to reshore their activities, and that one of the main reasons for this is the lower quality of goods from foreign suppliers. Fratocchi et al. (2014) report that logistics costs are also an

important driver.

De Backer et al. (2016) look at different measures that could be correlated with reshoring. The first is the share of imports from lower-income countries in total domestic demand of high-income OECD countries. This measure has been actually increasing over time, which may suggest a rather limited extent of reshoring activities. The second is the share of employment of multi-national enterprises (MNEs) in the home country. In Europe, employment of MNEs has not been shifting back home, although more recent data suggest the opposite (De Backer et al. 2018). In the US, the evidence is more consistent with nearshoring to Mexico than reshoring to the US. In addition, the authors estimate econometric models to investigate if the employment and investment patterns of MNEs at the home location and abroad are consistent with reshoring. They find evidence consistent with reshoring as MNE affiliates at the home location grow faster than other MNE affiliates. However, as the authors point out, this could reflect other phenomena such as unobserved firm or country shocks.

Empirical evidence on the role of automation on reshoring patterns is even more limited. De Backer et al. (2018) analyze the impact that the adoption of robots in high-income countries had on offshoring and reshoring patterns. They find that companies' purchases of intermediate goods and services from foreign providers – a proxy variable for offshoring – are not related to robot adoption between 2000 and 2014. However, when focusing on the period of rapid robot adoption from 2010 to 2014, they find that automation was accompanied by a lower pace of offshoring. This negative association is larger for labor-intensive industries. To investigate the impacts on reshoring, they estimate if MNEs are more likely to bring jobs and fixed assets back home in developed countries that are automating more rapidly. The findings do not support the hypothesis that automation is a driver of reshoring. Accordingly, Artuc et al. (2018) use a gravity model with an instrumental variable for robot adoption and find that greater robot intensity in rich countries increases causes a rise in imports from developing economies. In contrast, Dachs et al. (2017) find that European firms adopting digital manufacturing technologies (known as Industry 4.0) are significantly more likely to

reshore activities.

By focusing on Mexico, this article also contributes to three strands of literature that have been largely concentrated on high-income countries. First, it relates to the emerging literature of the economic impacts of automation. Notable articles in this area include Acemoglu & Restrepo (2017), who find negative impacts of automation on LLM outcomes in the US, and Graetz & Michaels (2017) who find positive impacts of automation on labor productivity and TFP, and no effects on total employment using country-sector level data for a sample of 17 high-income countries. Chiacchio et al. (2018) apply Acemoglu and Restrepo's (2017) methodology to six European countries and find strong negative impacts of automation on employment. Using a similar approach, Dauth et al. (2017) find that while automation in Germany had a negative impact on manufacturing jobs, the total effect was zero as jobs were created in the services sector. They also find negative impacts of automation on wages of middle-skill workers. There are two recent studies that examine the impacts of automation in Mexico. Faber (2018) and Pedemonte et al. (2018) examine the labor market impacts of exposure to US and domestic automation across Mexican municipalities. However, unlike this article, they do not use trade data at the local level and instead rely on a Bartik-style variable to allocate national-level exports to each locality. At the same time, municipal-level data do not necessarily provide an appropriate approximation of local labor markets. Thereby, the existence of labor migration across municipalities may introduce a bias to the estimated labor market impacts. Finally, they use data from Census samples instead of the full counts, which may lead to noisy labor market indicators for small municipalities.

Second, this article contributes to the literature on the technological drivers of offshoring (see, for example, Abramovsky & Griffith (2006); Bartel et al. (2014); Fort (2016)). Finally, this article is linked to a large body of literature on the impacts of offshoring (see, for example, Baumgarten et al. (2013); Ebenstein et al. (2014); Hummels et al. (2014)) and trade (see, for example, Autor et al. (2013); Hakobyan & McLaren (2016)) on the labor market.

3 Econometric Model

3.1 Impacts of Automation on Trade

To estimate the impact of US automation on Mexico’s LLMs, we follow Acemoglu & Restrepo (2017) and construct a measure of each area’s exposure to US automation by using a weighted average of the increase in the number of robots per thousand workers by sector in the US over time:

$$robots_RCA_{m,2004,2014}^{US} = \sum_i^I \omega_{m,i,2004} \left[\left(\frac{robots_{2014,i}^{US}}{emp_{2000,i}^{US}} \right) - \left(\frac{robots_{2004,i}^{US}}{emp_{2000,i}^{US}} \right) \right] \quad (1)$$

Where $robots_{2014,i}^{US}$ stands for the number of robots in industry i in the year 2014 in the US, and $emp_{2000,i}^{US}$ denotes the number of workers (thousands) in industry i in the year 2000 in the US. Each weight $\omega_{m,i,2004}$ is the share of exports to the US from region m and industry i in Mexico in 2004, in the total exports from region m to the US in 2004. This would give more weight to the automation of sectors where the LLM has a revealed comparative advantage (RCA). Thereby, if an area has a revealed comparative advantage in sectors where US automation is low, its exposure to the latter would be small as well. Hakobyan & McLaren (2016) use a similar approach to investigate the impacts of NAFTA on US employment.

In addition, we control for the confounding effect of domestic automation. Since local automation may affect exports through different channels, we experiment with different specifications of this measure. The first one is similar to that of Acemoglu and Restrepo (2017) and assumes that exposure to local automation would be higher in areas where employment is more concentrated in sectors that are adopting more robots:

$$robots_emp_{m,2011,2014}^{MX} = \sum_i^I \mu_{m,i,2004} \left[\left(\frac{robots_{2014,i}^{MX}}{emp_{2000,i}^{MX}} \right) - \left(\frac{robots_{2011,i}^{MX}}{emp_{2000,i}^{MX}} \right) \right] \quad (2)$$

Where all the terms are similar to equation (1), with the exception of $robots_emp_{m,2011,2014}^{MX}$ and $emp_{2000,i}^{MX}$, which denote the number of robots and total employment (thousands of work-

ers) by industry in Mexico, and the weight $\mu_{m,i,2004}$, which is the share of industry i 's employment in the total employment of LLM m .

For the second alternative, we expect that the impact of domestic exposure to automation on exports would be stronger among industries where Mexico has a revealed comparative advantage:

$$robots_RCA_{m,2004,2014}^{MX} = \sum_i^I \omega_{m,i,2004} \left[\left(\frac{robots_{2014,i}^{MX}}{emp_{2000,i}^{MX}} \right) - \left(\frac{robots_{2004,i}^{MX}}{emp_{2000,i}^{MX}} \right) \right] \quad (3)$$

Where the weights $\omega_{m,i,2004}$ are the same as in equation (1).

Finally, we also use a measure that combines both approaches in (2) and (3):

$$robots_RCA_emp_{m,2011,2014}^{MX} = \sum_i^I \mu_{m,i,2004} \frac{exports_{m,i,2004}}{emp_{m,i,2004}} \left[\left(\frac{robots_{2014,i}^{MX}}{emp_{2000,i}^{MX}} \right) - \left(\frac{robots_{2011,i}^{MX}}{emp_{2000,i}^{MX}} \right) \right] \quad (4)$$

According to this measure, the exposure of LLM m to domestic automation is higher in places with both a higher share of employment and a higher level of exports per worker in domestic industries ($\frac{exports_{m,i,2004}}{emp_{m,i,2004}}$) that are rapidly automating. To investigate the impacts of automation on exports, we estimate the following equation:

$$\Delta \ln \left(\frac{exports_{m,t}}{Emp_{m,2000}} \right) = \alpha + \beta^{US} robots_RCA_{m,t,t-\tau}^{US} + \beta^{MX} robots_{m,t,t-\tau}^{MX} + \Phi X + \epsilon_{i,t} \quad (5)$$

Where $\frac{exports_{m,t}}{Emp_{m,2000}}$ stands for the total value of exports from LLM m in year t , and $Emp_{m,2000}$ stands for total employment in LLM m in year 2000. Even though we have yearly data on robots and exports, we estimate equation (5) using a long-difference of the outcome variable (i.e. the change between the latest and earliest available data point) instead of using several yearly changes since the impacts of automation may not be immediate.

Given the high level of economic integration between the US and Mexico, there are valid concerns that exposure to US automation could be endogenous, as US industries that face higher competition from Mexico may be more likely to automate. We address this concern

by using the following instrumental variable for the exposure to US automation:

$$robots_RCA_{m,2004,2014}^{EU} = \sum_i^I \omega_{m,i,2004} \left[\left(\frac{robots_{2014,i}^{EU}}{emp_{2000,i}^{EU}} \right) - \left(\frac{robots_{2004,i}^{EU}}{emp_{2000,i}^{EU}} \right) \right] \quad (6)$$

Where $robots_RCA_{m,2004,2014}^{EU}$ is the average number of robots per worker in industry i among a subset of European countries. In some specifications we use a similar instrumental variable for local automation, where the exposure to Mexican automation is instrumented with exposure to automation in Brazil.

3.2 Impacts of Automation on Local Labor Market Outcomes

To investigate the impacts of automation on labor market outcomes, we first estimate the following reduced-form equation:

$$\Delta (Empl_{m,t}) = \pi + \pi^{US} robots_RCA_{m,t,t-\tau}^{US} + \pi^{MX} robots_{m,t,t-\tau}^{MX} + \Pi X + u_{i,t} \quad (7)$$

Where $Empl_{m,t}$ is a labor market indicator for labor market m .

To estimate the impact of the decline in exports driven by US automation on labor market outcomes, we use equation 5 as the first stage equation to obtain the change in exports driven by exposure to US automation $\Delta \ln \left(\widehat{\frac{exports_{m,t}}{Emp_{m,2000}}} \right)$. We then estimate the second-stage equation:

$$\Delta (Empl_{m,t}) = \theta + \theta^{US} \Delta \ln \left(\widehat{\frac{exports_{m,t}}{Emp_{m,2000}}} \right) + \theta^{MX} robots_{m,t,t-\tau}^{MX} + \Theta X + v_{i,t} \quad (8)$$

Where the coefficient θ^{US} captures the change in LLM outcome $Empl_{m,t}$ caused by the change in exports triggered by US automation.

4 Data Sources and Descriptive Statistics

4.1 Data

Trade data: Data on exports and imports by municipality, year, destination and product come from the tax authority of Mexico (Servicio de Administracion Tributaria), and covers each municipality over the 2004-2014 period. Data are reported using the HS (Harmonized System) 2002 classification at the 4-digit level, and converted to the ISIC Rev. 4 classification using correspondence tables. These data are also used to construct the RCA weights $\omega_{m,i,2004}$ from equation 1.

Automation data: Data on the stock of robots by country, year and sector of economic activity comes from the International Federation of Robotics (IFR). The data are based on a survey of robot suppliers, and cover 50 countries which represent 90 percent of the world market of robots. The sector classification follows the ISIC classification closely (but not exactly), at roughly the two-digit level for the manufacturing sector, and two-digit level for non-manufacturing sectors. The stock of robots is estimated using the perpetual inventory method, where the initial stock is adjusted by the yearly delivery of robots and depreciation rate.

To express the number of robots in per worker terms for the group of European countries, the US, Mexico and Brazil, we use data from several sources. For Europe, we use data on employment from EUROSTAT for circa 2000; for the US, from the 2000 Current Population Survey (CPS); for Brazil, we estimate the number of employees by sector using microdata from the IPUMS sample of the 2000 Census of Population; for Mexico, we use data from the 1999 Economic Census.

Labor market indicators: We use tabulations from the 2000 and 2010 Census of Population and Housing and the 2015 Population Count to obtain labor market indicators, as well as demographic characteristics of the population at the municipal level.² Given that

²Even though the 2015 population count is a survey, its sample size is large enough to obtain statistics representative at the municipality level. See Enamorado et al. (2016).

the publicly available data from the Mexican Institute of Statistics do not allow for more than two cross-tabulations, we use the Census microdata samples from IPUMS (Ruggles et al. 2008) to estimate labor market indicators for more detailed socio-economic groups. For example, when using publicly available Census counts to calculate the number of workers aged 12 years or older by type (wage and non-wage) and sector (private and public), we cannot further disaggregate by age. To test if the inability to restrict the sample to working-age individuals affects the results, we estimate the indicators by age using Census sample microdata (which we can disaggregate in multiple ways), or using a different cross tabulation of the Census counts (for example, by worker type and age) and re-estimate the regressions.

When considering labor market impacts, we focus on wage employment (i.e. paid individuals working for a firm) as this is the category most likely to be affected by automation, as opposed to self-employed, employers or family workers. We also analyze changes in the composition of employment by looking at the share of informal workers in total employment, where informality is defined as being self-employed, unpaid worker or day laborer.

We use data on the number of employees by sector of economic activity and municipality from the 1999 Economic Census to estimate the employment weights $\mu_{m,i,1999}$, which are used to construct the measure of exposure to local automation. These data allow for a higher level of sectoral disaggregation than the 2000 Census of Population of Housing.

Local labor market (LLM) definition: Given that we estimate impacts at the LLM level, we group municipalities into functional territories following Berdegué et al. (2017). This methodology allows to increase the sample of LLMs significantly with respect to the official number of 59 Metropolitan Areas defined by the Statistical Institute (INEGI). Using a combination of commuting flows and satellite night light data, the authors group 2,446 municipalities into 1,534 functional territories. The assumption is that groups of municipalities that exhibit high levels of commuting flows among them, and that represent a single geographical unit according to the night light data form a functional territory. These functional territories include large metropolitan areas such as Mexico City, which contains 88 mu-

nicipalities, but also small and remote municipalities with no connections. These functional territories seem to be consistent with the LLM assumption that local trade and technological shocks do not spill-over to other areas through labor migration (see Table 20).

Other data: We use data from EUKLEMS on adoption of Information Technology (IT) and Communication Technology (CT) by sector and time for the US to estimate a measure of exposure of Mexican LLMs to such technologies in the US, for a robustness test. We use data on the degree of offshorability and routine task intensity of Mexican occupations from Mahutga et al. (2018). We use data the susceptibility of automation of occupations from Artuc et al (2018). Data on fixed assets, machinery and value added per worker by LLM come from the publicly available tabulates of the Mexican Economic Censuses for 2003 and 2013.

4.2 Descriptive Statistics

Figure 1 shows the evolution of the stock of robots per thousand workers. Automation in the US, Europe and Mexico increased almost every year since they entered the sample. According to this measure, automation in Europe is almost twice the level of the US. Accordingly, Mexico's automation is almost half that of the US. However, it increased at a fast pace since 2011 narrowing the initial gap. In contrast, automation in Brazil is much lower and did not experience significant changes since 2004.

According to Figure 2 and Figure 3, automation has been primarily driven by the automotive sector, both in Mexico and the US. Other leading sectors include computers, plastics, basic metals, pharmaceuticals and machinery. Sectors that adopted robots at a higher pace in the US and Mexico also experienced a higher increase in exports from Mexico to the US, although the correlation is rather weak (Figure 2 and Figure 4).

There is substantial variation across regions in terms of exposure to US and local automation (see Figure 6). As expected, when weighting by exports, exposure to US and local automation are highly correlated (Figure 5). Such correlation becomes substantially weaker

when using employment, or the combination of employment and exports, to construct the weights for the exposure to local automation measure.

5 Results

5.1 Baseline Results for Exports and Imports

Table 2 shows the OLS results for exports. The dependent variable is the change in total exports per worker (in log points) from each Mexican LLM to the US from 2005 to 2014.³ As explained above, the exposure to US robots is the change in the number of robots per thousand workers by sector in the US, weighted by the initial export share of each sector within LLMs. Column 1 displays the most parsimonious specification, where we only control for State fixed effects. The coefficient associated with exposure to US robots indicates that an increase in one robot per thousand workers in the US is associated with a 9.5 log points (9 percent) decline in exports per worker growth from Mexico to the US.⁴ This effect represents 8.5 percent of the overall increase in exports to the US during this period.

Column 2 (our preferred specification) includes baseline LLMs characteristics as control variables. These are in levels to capture different trends in exports across locations. While the value of the coefficient of interest declines, it changes only slightly to -7.28. Column 3 drops LLMs at the top 1 percent of exposure to US automation. The impact of US automation is still negative and significantly higher in absolute value, which suggests that potential outliers are not driving the results. To test if the results are affected by the secular decline in manufacturing or routine jobs, column 4 controls for the initial shares of employment in manufacturing, while column 5 controls for the share of workers in routine and non-routine manual occupations. Neither of these control variables seems to affect the

³We use log points (i.e. $\ln(x) \times 100$) to facilitate the interpretation of the coefficients.

⁴The change in the dependent variable as a result of an increase in one robot per thousand workers is equal to $\Delta \ln \left(\frac{exports_{m,1}}{Emp_{m,2000}} \right) - \Delta \ln \left(\frac{exports_{m,0}}{Emp_{m,2000}} \right) \times 100 = 9.5$, which implies that the growth percent change is equal to $e^{-0.095} - 1 \approx -0.09$, i.e. around 9 percent.

results substantially. Finally, column 6 omits the automotive sector from both the dependent variable and the exposure measure. The size of the coefficient remains statistically significant and is equal to -14.36. This result suggests that the decline in exports because of US automation is not driven by the automotive sector. In fact, the larger negative impacts in this specification show that exposure to automation in other sectors had a larger negative impact on exports in relative terms. The lower impacts on the automotive sector could reflect the fact that automotive firms in Mexico are close to the technological frontier. According to the WTO, Mexico is the fourth largest importer of robots, which is led by the car industry, only surpassed by China, the US and Germany.⁵

The patterns of automation across sectors in the US and Mexico are positively correlated (see Figure 3), which implies that exposure to US automation is higher in areas where exposure to domestic automation is also higher (see Figure 5). Not controlling for exposure to domestic automation may introduce a bias to our estimates. Table 3 shows the estimates of the impact of exposure to US automation on Mexican exports to the US while controlling for exposure to domestic automation. Three specifications using different weighting schemes for local automation are reported. Local automation may affect exports disproportionately in sectors and regions with a revealed comparative advantage, i.e. where exports to the US are already higher. Panel A explores this hypothesis by using the same weights used to create the measure of exposure to US automation, that is exports per sector and area. It shows that the estimated impacts of US automation on Mexican exports become larger in absolute value (when compared to those of Table 2) and are statistically significant (except for column 6). The substantial change in the size of the impacts is driven by the fact that both measures of automation are highly correlated (see Figure 5) and that exposure to local automation is positively correlated with export growth. This latter finding is consistent with local automation improving the competitiveness of sector with a RCA in Mexico.

Panel B (our preferred specification) follows Acemoglu & Restrepo (2017) and uses em-

⁵<http://www.elfinanciero.com.mx/tech/mexico-cuarto-lugar-mundial-en-importacion-de-robots-industriales>

ployment weights to construct the measure of exposure to local automation, based on the assumption that exposure to local automation would affect exports disproportionately in areas with a higher share of employment in sectors that are automating rapidly. The estimated impacts of exposure to US automation on exports are very similar with and without controlling for employment-weighted local automation, which is not surprising considering that this measure and that of exposure to US automation are not highly correlated (see Figure 5). Panel C uses employment weights to construct the exposure to local automation, multiplied by the initial value of exports per worker in the LLMs sector. This measure captures impacts of automation operating through both revealed comparative advantage and employment. The point estimates of the impacts of US automation on exports per worker growth, as expected, are smaller than those of Panel A, and larger than those of Panel B. In addition, exposure to local automation has a positive impact on exports per worker growth across all columns.

The estimated impacts of exposure to US automation on trade may still be biased if, for example, the adoption of robots in the US depends on unobserved productivity or policy shocks at the sector level affecting both US automation and Mexico. This is not entirely implausible considering the high level of integration between both economies. To address this concern, we estimate an IV specification where we instrument exposure to US automation with exposure to automation in Europe. Since Mexico's trade with Europe is rather low (less than 5 percent of total Mexican exports), it is reasonable to assume that patterns of automation across sectors in Europe are unresponsive to trade patterns in Mexico, i.e. that the exclusion restriction is satisfied. Accordingly, to explore the impacts of Mexico's automation on exports, following the same logic we instrument the exposure to local automation with the exposure to automation in Brazil. Since trade between these two emerging economies is very low, automation in Brazil is unlikely to respond to Mexico's trade patterns with the US. Table 4 shows that the instruments are statistically significant in all specifications. It also shows that the exposure to Brazil's automation is more correlated with Mexico's than

with the US's, and that exposure to Europe's automation is more similar to the US's than Mexico's. While the table reports the results for employment-weighted local automation, the first-stage coefficients are also statistically significant when using export-weighted, as well as employment and export-weighted exposure to local automation.

Table 5 shows the IV estimates, which tend to be very similar to the OLS ones. This is true for the different specifications of the weighting scheme for local automation, and across columns. The only exception is for column 6 of Panel A, where export-weighted local automation is used and the automotive sector is excluded. However, the results in Panel A could be affected by a high degree of collinearity between the two measures of automation. The coefficient in column 2 of Panel B (our preferred specification) indicates that an increase of one robot per thousand workers in the US would lower exports growth per worker from Mexico to the US by 6.7 log points, that is 6.7 percent. This represents 6 percent of the total growth in exports to the US from 2004 to 2014. According to Panels A and C, exposure to domestic automation tends to increase exports to the US, but the results are not very robust across specifications.

To shed some light on aggregate impacts, Table 6 shows the estimated coefficients when using total exports in the initial year 2004 as weights. The estimates tend to increase in absolute value, suggesting that the impacts of exposure to US automation are larger in the main exporting sectors of Mexico. However, the results are not robust to excluding the automotive sector, suggesting that the auto sector drives the results when more weight is given to LLM with high levels of exports. This result is different to that of the unweighted regression, which suggests that the auto sector drives down the overall impacts when all LLMs are given the same weight.

Table 7 shows the impacts of exposure to automation on net exports to the US, as more automation in the US may increase imports in Mexico through an efficiency channel. The point estimates are negative and statistically significant, and similar in magnitude to our preferred results in Panel B of Table 5, suggesting that the impacts on imports coming from

the US were rather limited.

Table 8 shows the impacts of exposure to US automation on Mexico's exports to different destinations. The direction and magnitude of the impacts of exposure to US automation on exports to non-US destinations is not clear ex-ante. The impact could be positive if affected industries manage to offset the declining US demand for their products by selling to other destinations. However, this strategy may not be possible if exports to the US mainly consist of highly differentiated products tailored to the US market. Moreover, given the large volumes of exports to the US (about 87 percent of Mexico's total exports), a decline in them may prevent some firms from reaching economies of scale that would allow them to be competitive to export to other markets. This would imply that US automation may not only decrease exports to the US, but also to other destinations. Finally, many of Mexico's trade partners are also important trade partners of the US (about 10 percent of Mexico's exports go to US main trading partners). Thereby, if automation in US lowers exports from other destinations as well, this may in turn lower the demand for Mexican goods elsewhere. Columns 1 and 2 in panel B explore the impacts on exports to US trade partners (that is countries whose imports from and exports to the US represent at least 10 percent of their total imports and exports) and suggest that US automation also lowers the demand for Mexican goods from their trade partners. However, when we restrict the sample to non-US trade partners in Panel C (that is countries whose imports from and exports to the US represent less than 10 percent of their total imports and exports), exposure to US automation has no discernible impacts on exports.⁶

In Table 9, we explore the impacts of automation on different measures of exports to and imports from the US, grouped according to the UNCTADs Stages of Processing (SoP) classification. Columns 1 and 2 in Panels A and C show that exposure to US automation did not affect the exports of raw materials and capital goods from Mexico to the US. In contrast, Panels B and D indicate that the negative impacts of US automation on exports

⁶Mexico's trade with non-US main partners represents 3 percent of Mexico's total exports.

were driven primarily by intermediate and consumption goods, as they are negative and statistically significant across both specifications. The fact that exposure to automation in the US reduced the exports from intermediate goods is consistent with the hypothesis of automation increasing the pace of reshoring and/or lowering the pace of offshoring. The finding that it also reduced the exports of consumption goods suggests that the impacts of US automation on Mexico's goes beyond the reshoring/offshoring channel.

Columns 3 and 4 show impacts on different import categories, where the measure of exposure to US automation is constructed using import (instead of export) weights. Areas more exposed to automation in the US are more likely to experience an increase in imports of intermediate and raw materials. The main raw material imports from the US to Mexico include Corn, Soy and Meats, while the main intermediate goods include chemicals and metals. The use of robots in US agriculture is significant, with automated driving systems reaching a market penetration of about 10 percent in large corn plantations.⁷ Accordingly, anecdotal evidence from the US Polymers industry (one of the main intermediate goods exports from the US to Mexico) suggest that the increase in productivity associated with the adoption of robots has been dramatic.⁸ On the other hand, imports of capital goods tend to decline more in regions more exposed to automation in the US. Consumption goods imports do not seem affected by US automation. These results suggest that exposure to automation in the US may have had some positive impacts on efficiency by allowing Mexico to have access to cheaper inputs. On the other hand, the reduction in imports of capital goods may be a response to the lower demand for Mexican exports as a result of automation in the US.

Table 10 carries out some robustness checks of the main findings. A potential concern is that the estimated effects reflect local responses to other trade shocks, such as increased import competition from China. This could be true if industries that are automating rapidly in the US are those where Mexico and China had an initial comparative advantage. In

⁷<https://www.cnbc.com/2016/07/07/robots-are-coming-to-a-farm-near-you.html>

⁸<https://www.universal-robots.com/case-stories/dynamic-group/>

fact, Blyde et al. (2016) find that increased Chinese competition had a significant negative impact on Mexico’s manufacturing industry during this period. The specification in Panel A addresses this issue by controlling for the ratio of Chinese imports to total value added in the region, and shows that the main results are not affected.

Our estimated impacts of US automation may also capture exposure to other industry-level outcomes in the US, such as increased use of Information and Communications Technologies (ICT). Panels B and C control for exposure to investments in IT (Information Technology) and CT (Communication Technology) in the US from 2004 to 2014, using the export-weighted change in the stock of IT and CT capital per worked hour in the US. The results show that the impacts of US automation on Mexican exports are independent of the increasing adoption of ICT in the US. Panel D shows that the results are also robust to controlling for domestic IT investments.

Finally, Panel E investigates whether the decline in exports driven by US automation reflects other characteristics of the district and general trade patterns, such as the fact some regions may have been more likely to experience a decline in exports given that their main economic sectors are intensive in jobs that are more ”offshorable”, and that such sectors are the ones automating rapidly in the US. This specification controls for the fraction of offshorable jobs in the region in the year 2000, using three dummy variables indicating whether the region is in the second, third or fourth quartile in terms of the fraction of offshorable jobs. The impact of exposure to US automation on Mexican exports remains negative and statistically significant.

5.2 Results for Employment

5.2.1 Impacts of US automation on Tradable Sector Employment

Table 11 presents the reduced-form estimates of the impact of US automation on Mexico’s employment in the tradable sector (i.e. agriculture, mining and manufacturing). While US automation may also affect employment in the non-tradable sector indirectly by displacing

workers from sectors exposed to trade with the US or by input-output linkages, this specification aims to capture direct impacts. Panels A and B use wage employment to population (12 years or older) ratios from the Population Census counts. One limitation of this measure is that the publicly available counts do not allow to restrict the sample further to people older than 15 years of age, or to the private sector. Panel C provides results for private wage employment in the private sector for people aged 15 years or older using the IPUMS samples. We also provide results for separate age groups below. In addition to the control variables included in the previous section, we also include the initial share of exports and imports in the region's value added as right-hand side variables. This would control for any differential employment trends by regions with different degrees of trade openness. In addition, we control for the initial share of manufacturing employment in all specifications, as this variable is highly correlated with employment growth in the tradable sector, possibly capturing secular trends in manufacturing jobs. Finally, we control simultaneously for employment- and export-weighted exposure to local automation. This is because export-weighted exposure to local automation is correlated with exposure to US automation. Thereby, its omission would likely bias the estimated impact of US automation on employment, as it would also capture any impacts that Mexico's automation in sectors with a comparative advantage may have on the labor market. At the same time, we need to include employment-weighted exposure to local automation to control for the direct impact of local automation on employment that operates outside the trade channel. The reduced-form estimates show that US automation did not affect employment rates in Mexico's tradable sector, since the coefficients are not statistically different from zero in all specifications.

Table 12 shows the estimates of trade with the US on Mexico's employment in the tradable sector, driven by exposure to US automation. In other words, changes in trade outcomes at the area level are instrumented with exposure to US automation. Thereby, the coefficients would reflect the impacts of changes in trade with the US that are driven by US automation. The first-stage equation is the main equation 5, whose estimates are reported in Table 3.

We report the results for the impacts of total exports, as well as imports of intermediate and raw products, since these trade variables seemed the most affected by exposure to US automation (see Table 9). The results are consistent with those of Table 9, as the coefficients are not statistically significant.

One hypothesis to explain why exposure to US automation did not affect Mexico's labor markets is that given that the share of wage employment in the working age population is rather small and exhibits a high variance across regions, the sample size may not be large enough to detect any impacts of exposure to US automation. In fact, a simple analysis of power (see Appendix) suggests that with the current sample size, the minimum detectable effect of exposure to US robots is rather high when compared to the impacts of local automation discussed below. To detect an impact comparable to the one we find for exposure to local automation, we would need to increase the sample size considerably (by about 1,000 local labor markets). In addition, the absence of labor market impacts could also be explained by the fact that the trade impacts of US automation on trade, while statistically significant, are rather small in magnitude. Given that exposure to US automation increased on average by 0.5 robots per worker, the estimates in Table 5 indicate that export growth per worker declined by around 3.3 percent. This differential growth is not substantially large considering that, during this period, exports per worker to the US grew 110 percent for the average LLM. For benchmark purposes, imports from China to Mexico per worker increased 15.4 times between 1998 and 2013, which reduced the manufacturing employment to working age population by only 0.19 percentage points during this period (Blyde et al. 2016).

However, the lack of significant impacts on manufacturing employment at the aggregate level hides heterogeneous impacts across areas. Table 13 shows the labor market impacts on areas that had different shares of jobs susceptible to being replaced by robots. It is expected that among areas experiencing similar levels of exposure to US automation, those with a higher replaceability index would experience larger employment declines. In fact, as seen in column 2, the OLS results show that exposure to US automation had a disproportionate

negative impact on manufacturing employment in areas where more jobs were likely to be replaced by robots. Among areas with an exposure of one robot per thousand workers, those with an initial share of replaceable jobs twice the average witnessed a decrease in the share of manufacturing jobs of about 0.31 percentage points ($1 \times 0.0988 + 1 \times (-0.502) \times 0.82$), while the corresponding value for areas with an average share of replaceable jobs is 0.11 percentage points ($1 \times 0.0988 + 1 \times (-0.502) \times 0.41$). The IV results show the impact of exports on manufacturing employment driven by exposure to US automation. A back of the envelope calculation suggests that the negative impacts of exposure to US automation on exports to the US (of about 3 percent), reduced manufacturing employment by an additional 0.029 ($\approx -0.00997 \times (-3.0) \times 0.82$) percentage points in areas with a share of replaceable jobs twice the mean. Even in the areas impacted the most, the labor market impacts were rather small. This supports the hypothesis mentioned above about the trade effects of exposure to US automation being too small to generate sizable labor market impacts.

In contrast, exposure to US automation was accompanied by higher manufacturing employment growth in areas where the share of replaceable jobs was lower (column 1). These areas may have adjusted in a different way to the external shock. Since jobs were less likely to be replaced, firms may have coped with the increased competitive pressures by investing and becoming more productive. If capital is a complement factor to labor, this could foster the demand for workers and thereby explain the positive impacts of US automation on employment in areas where labor was initially less likely to be replaced by robots.

5.2.2 Impacts of US and Domestic Automation on Total Employment

Table 14 presents the impacts of US and local automation on the ratio of wage employment to working age population. We consider employment in wage jobs, for people 12 years of age and older as reported in the published Census tabulations by the National Statistical Institute (INEGI). This is a reduced-form equation where US automation enters directly in the right-hand side. It shows that higher exposure to US automation did not have a significant

impact on total wage employment, on average. In contrast, exposure to local automation has a negative effect on employment which is robust across all specifications except the one in the first column. The coefficient is very similar across columns 1 through 5, and increases dramatically when excluding the automotive sector. The coefficient in Column 2 implies that an area that experienced an increase in 1 robot per thousand workers in Mexico, witnessed a 0.026 percentage points lower employment to population ratio growth compared to an area with zero exposure to local automation.

Table 15 tests if the lack of impacts of US automation on total employment hides heterogeneous impacts by the initial share of replaceable jobs in the area. Employment rates were not affected by US automation even among areas with a high share of replaceable jobs. In other words, the decline in manufacturing jobs driven by US automation did not translate into significant employment losses at the more aggregate level. Given the lack of impacts of US automation on total wage employment rates, the rest of this section focuses on the effects of domestic automation.

Table 16 shows the IV estimates of exposure to domestic automation on total wage employment rates, where exposure to automation in Brazil is used as the instrumental variable. The coefficient in column 2 of Panel A indicates that an increase of one robot per thousand workers in Mexico decreased employment rate growth by 0.0792 percentage points. This impact is significantly smaller than the one that Acemoglu & Restrepo (2017) found for the US, where a similar increase in the relative number of robots reduced employment to population ratio growth by 0.37 percentage points. This impact is also small when compared to the wage employment rate of 30.2 percent in the year 2000. When compared to the change in the wage employment rate during the period (3.3 percentage points), the impact of automation on wage employment represents only 2.4 percent of the 2000-2015 change. The impacts on total employment rate (i.e. wage plus non-wage employment) are not statistically significant (Panel B). Panel C suggests that instead of increasing joblessness, exposure to domestic automation increased the rate of informality. An increase in one robot per thou-

sand workers raised the share of informal jobs by 0.155 percentage point, which represents about 0.26 percent of the informality rate in 2015. Despite the significant impacts on wage employment and informality, wages did not experience significant changes due to exposure to local automation (Panel D).

The estimates in Panel A of Table 17 indicate that only workers aged 44 years or less experienced the negative impacts of exposure to local automation. The impacts are the largest for the 15-24 years group. Panel B suggests that the informal sector absorbed a significant portion of the shock. For example, the results in column 2 for workers aged 25 to 34 indicate that an increase of 1 robot per thousand workers lowered wage employment rate growth by 0.074 percentage points and increase the growth in the fraction of informal workers by 0.086 percentage points. More exposure to local automation did not affect inactivity (Panel D).

Panel A of Table 18 shows that the negative impacts of domestic automation were only experienced by unskilled workers, particularly high school graduates. According to column 4, an increase of one robot per thousand workers reduced the employment rate growth of high school graduates by 0.127 percentage points. In contrast, college graduates were not affected. Panel B suggests that to a large extent labor markets adjusted through increasing the relative size of the informal sector, where informality is measured as the share of employed people who are day laborers, self-employed or unpaid workers. Column 4 in Panel B indicates that an increase of one robot per thousand workers increased the share of informal workers by 0.0972 percentage points among high school graduates.

Table 19 shows the impacts by gender and indicates that while both men and women experienced a decline in employment as a result of exposure to domestic automation, the impacts were larger for the former. These patterns are consistent with the findings of Acemoglu & Restrepo (2017) for the US, who also find that the negative impacts of robots are slightly larger for men than for women.

Tables 20 and 21 present some robustness checks. Table 20 tests the hypothesis that

the geographic units are a reasonable choice to measure LLM impacts. It shows that exposure to local and US automation (through exports) did not have a significant impact on net migration at the area level. Thereby, it is unlikely that automation-induced labor mobility introduces a bias to our estimates of employment impacts. Table 21 tests for other confounding factors that may affect the estimations. It shows that controlling for overall investments, and investments in machinery and ICT, as well as exposure to Chinese imports and off-shoring, dropping LLMs with only one municipality and weighting by the working age population do not affect the main findings.

Finally, Table 22 shows the impacts of automation on wage inequality, defined as the ratios of average monthly wages from different percentiles of the wage distribution (in log points). It shows that more exposure to domestic automation increases the wage ratio between the 90th and 10th percentile. The size of the coefficient implies that an increase in one robot per thousand workers raises the 90-10 wage ratio by 0.29 percentage points ($\approx e^{0.00294} - 1$).

6 Conclusion

This article examines the link between automation in high-income countries and trade with developing economies, and the associated labor market impacts. Using trade data by municipality, sector and destination from 2004 to 2014, it provides new evidence that increasing exposure to robot adoption by US industries results in lower export growth from Mexico to the US. The decline in export growth was driven by intermediate goods, which is consistent with the hypothesis that automation in rich countries may induce reshoring, or lower the pace of offshoring to developing economies. Exposure to US automation also reduced exports of consumption goods from Mexico. In contrast, higher exposure to US automation was accompanied by an increase in imports of raw materials and intermediate goods, which is consistent with US automation contributing to increase the economic efficiency of Mexico's

firms by allowing them to access cheaper inputs.

This automation-induced trade shock also had an effect, albeit small, on Mexico's workers. In particular, areas where a higher fraction of jobs were susceptible to being automated were more likely to experience a decline in manufacturing employment in response to US automation. However, when examining the impacts on total wage employment in all sectors (manufacturing and non-manufacturing), the impacts of US automation vanish. The analysis suggests that this is driven by the fact that the automation-induced trade shock was rather small in magnitude.

In addition, we find that the domestic adoption of robots in Mexico had negative impacts on wage employment. Displaced workers were more likely to move to informality than to unemployment. Finally, the shock was harder for unskilled, young workers and for those at the bottom of the wage distribution, which contributed to increase wage inequality in areas more exposed to local automation.

While the impacts of US and local automation on Mexico's exports and labor markets tend to be negative, they are rather small in magnitude. Nevertheless, the results indicate that disadvantaged workers are more likely to suffer these negative effects than the rest. In addition, given the increasing rate of robot adoption across countries, it is not clear that the estimated labor market impacts will remain small. The results of this article highlight the importance of policies to safeguard unskilled and young workers from the disruptive effects of technology and trade. At the same time, the positive impacts of US automation on the regions of Mexico where jobs were unlikely to be replaced by automation, and the lack of negative impacts of local automation on skilled Mexican workers underline the benefits of policies to build skills complementary to new technologies. The findings also highlight the importance of the informal sector to cushion the disruptive impacts of automation on workers of developing countries.

References

- Abramovsky, L. & Griffith, R. (2006), Outsourcing and offshoring of business services: How important is ICT?, *in* 'Journal of the European Economic Association'.
- Acemoglu, D. & Restrepo, P. (2017), 'Robots and Jobs: Evidence from US Labor Markets', *SSRN Electronic Journal*.
- Allen, R. C. (2017), 'Lessons from history for the future of work'.
- Artuc, E., Bastos, P. & Rijkers, B. (2018), *Robots, Tasks and Trade*, The World Bank.
- Autor, D. H., Dorn, D. & Hanson, G. H. (2013), 'The China syndrome: Local labor market effects of import competition in the United States', *American Economic Review*.
- Bartel, A. P., Lach, S. & Sicherman, N. (2014), 'Technological change and the make-or-buy decision', *Journal of Law, Economics, and Organization*.
- Baumgarten, D., Geishecker, I. & Görg, H. (2013), 'Offshoring, tasks, and the skill-wage pattern', *European Economic Review*.
- Berdegúe, J. A., Hiller, T., Ramírez, J. M., Satizábal, S., Soloaga, I., Soto, J., Uribe, M. & Vargas, M. (2017), Delineating Functional Territories From Outer Space, Technical report.
- Blyde, J., Busso, M., Faggioni, V. & Romero, D. (2016), 'The Impact of Chinese Competition on Mexican Labor Outcomes', *Banco Interamericano de Desarrollo, Washington, DC. Documento inédito*.
- Chiacchio, F., Petropoulos, G. & Pichler, D. (2018), 'The impact of industrial robots on EU employment and wages: A local labour market approach', *Bruegel Working Papers*.
- Dachs, B., Kinkel, S. & Jäger, A. (2017), 'Bringing it all back home? Backshoring of manufacturing activities and the adoption of Industry 4.0 technologies'.
- Dachs, B. & Zanker, C. (2015), 'Backshoring of production activities in European manufacturing'.
- Dauth, W., Findeisen, S., Südekum, J. & Woessner, N. (2017), 'German robots-the impact of industrial robots on workers'.
- De Backer, K., DeStefano, T., Menon, C. & Suh, J. R. (2018), 'Industrial robotics and the global organisation of production'.
- De Backer, K., Menon, C., Desnoyers-James, I. & Moussiégt, L. (2016), 'Reshoring: Myth or reality?'.
- Ebenstein, A., Harrison, A., McMillan, M. & Phillips, S. (2014), 'Estimating the impact of trade and offshoring on American workers using the Current Population Surveys', *Review of Economics and Statistics*.
- Enamorado, T., López-Calva, L., Rodríguez-Castelán, C. & Winkler, H. (2016), 'Income inequality and violent crime: Evidence from Mexico's drug war', *Journal of Development Economics* **120**.
- Faber, M. (2018), 'Robots and reshoring: Evidence from Mexican local labor markets'.
- Fort, T. C. (2016), 'Technology and Production Fragmentation: Domestic versus Foreign Sourcing', *The Review of Economic Studies*.
- Fratocchi, L., Iapadre, L., Ancarani, A., Di Mauro, C., Zanoni, A. & Barbieri, P. (2014), Manufacturing reshoring: threat and opportunity for East Central Europe and Baltic Countries, *in* 'Geo-regional competitiveness in Central and Eastern Europe, the Baltic countries, and Russia', IGI Global, pp. 83–118.
- Graetz, G. & Michaels, G. (2017), Robots at work.

- Hakobyan, S. & McLaren, J. (2016), ‘Looking for local labor market effects of NAFTA’, *Review of Economics and Statistics* **98**(4), 728–741.
- Hummels, D., Jørgensen, R., Munch, J. & Xiang, C. (2014), ‘The wage effects of offshoring: Evidence from Danish matched worker-firm data’, *American Economic Review* **104**(6), 1597–1629.
- Mahutga, M. C., Curran, M. & Roberts, A. (2018), ‘Job tasks and the comparative structure of income and employment: Routine task intensity and offshorability for the LIS’, *International Journal of Comparative Sociology* **59**(2), 81–109.
- Pedemonte, M., Vishwanath, T. & Zarate, R. (2018), Robot Adoption, Automation, and Labor Markets in a Global Economy.
- Perry, G. E., Arias, O., Fajnzylber, P., Maloney, W. F., Mason, A. & Saavedra-Chanduvi, J. (2007), *Informality: Exit and exclusion*, The World Bank.
- Ruggles, S., Sobek, M., Alexander, T., Fitch, C. A., Goeken, R., Hall, P. K., King, M. & Ronnander, C. (2008), ‘Integrated Public Use Microdata Series: Version 3.0 [Machinereadable database](Minneapolis: Minnesota Population Center, 2004)’, *Accessed July* .

Tables

Table 1: Summary Statistics

	Exposure to US automation		Exposure to Local automation	
	Low	High	Low	High
Exports to US, log points change (2004-2014)	104.2	62.6	87.9	78.7
Exports to US per worker, log points change (2004-2014)	115.5	106.1	113.1	108.6
Imports from US log points change (2004-2014)	-19.2	-4.3	-9.7	-13.6
Imports from US per worker, log points change (2004-2014)	-4.6	0.8	-2.6	-1.3
Total employment to population ratio, 2000	41.7	44.7	42.6	43.8
Total wage employment to population ratio, 2000	10.0	14.9	11.5	13.4
Inactive individuals to population ratio, 2000	58.0	54.9	57.1	55.8
Informal employment to population ratio, 2000	70.1	60.7	66.8	63.9
Total employment to population ratio, 2000-2015 change	-5.7	-4.5	-5.5	-4.8
Total wage employment to population ratio, 2000-2015 change	2.8	2.8	2.7	2.9
Inactive individuals to population ratio, 2000-2015 change	4.4	3.1	4.0	3.4
Informal employment to population ratio, 2000-2015 change	-7.6	-7.0	-7.1	-7.4
Total employment to population ratio, 2000-2010 change	0.4	0.1	0.1	0.4
Total wage employment to population ratio, 2000-2010 change	-10.0	-14.9	-11.5	-13.4
Covariates (2000 values)				
High school graduates (%)	15.8	19.3	16.6	18.5
College graduates (%)	2.0	3.3	2.3	3.0
Rural population (%)	77.7	58.7	74.4	62.2
Women (%)	51.2	51.0	51.0	51.2
15-29 years old (%)	13.9	15.2	14.3	14.8
30-49 years old (%)	19.3	20.3	19.5	20.1
50-64 years old (%)	9.7	8.7	9.3	9.2
64+ years old (%)	7.6	6.0	6.9	6.6
Population (log)	8.8	10.0	9.2	9.7
Employment in agriculture (%)	55.8	47.2	53.3	49.7
Employment in industry (%)	19.9	21.2	20.1	21.0
Workers in routine occupations (%)	34.2	36.1	34.2	36.0
Workers in non-routine manual occupations (%)	30.2	31.3	29.8	31.6
Workers in cognitive occupations (%)	35.7	32.5	35.9	32.4

Table 2: OLS impacts of exposure to US robots on exports, 2005-2014

	(1)	(2)	(3)	(4)	(5)	(6)
Exposure to <i>robots_RCA^{US}</i>	-9.503*** (2.491)	-7.281*** (2.627)	-16.86*** (4.407)	-6.937*** (2.594)	-7.166*** (2.627)	-14.36*** (5.552)
Initial characteristics (2000)						
% Secondary Education		0.0673 (1.142)	0.0399 (1.153)	0.896 (1.193)	0.246 (1.153)	0.204 (1.141)
% Tertiary Education		-3.577 (3.018)	-2.911 (3.083)	-1.743 (3.155)	-3.843 (3.038)	-4.101 (3.038)
% Rural		0.0586 (0.204)	0.0435 (0.205)	-0.0508 (0.211)	0.0309 (0.205)	0.104 (0.206)
% Employed		-0.809 (0.571)	-0.757 (0.573)	-1.178* (0.627)	-0.937 (0.578)	-0.663 (0.578)
% age 20-29		-6.079* (3.144)	-6.140* (3.146)	-4.657 (3.196)	-5.543* (3.265)	-6.197** (3.150)
% age 30-49		5.517* (3.284)	5.428* (3.279)	5.612* (3.356)	5.340 (3.270)	5.428* (3.285)
% age 60-64		-4.619 (4.609)	-4.841 (4.594)	-5.740 (4.629)	-4.464 (4.616)	-4.716 (4.618)
% age 65+		1.102 (2.579)	1.123 (2.576)	2.518 (2.625)	1.088 (2.582)	0.817 (2.570)
log(population)		-1.797 (5.139)	-0.505 (5.182)	-1.165 (5.258)	-1.527 (5.178)	-2.157 (5.109)
Observations	1,422	1,419	1,405	1,419	1,416	1,419
State Fixed Effects	YES	YES	YES	YES	YES	YES
Excludes highly exposed areas	NO	NO	YES	NO	NO	NO
Manufacturing employment	NO	NO	NO	YES	NO	NO
Occupational structure	NO	NO	NO	NO	YES	NO
Excludes auto	NO	NO	NO	NO	NO	YES

Note: the dependent variable is the change in the log of exports per worker from Mexico to the US (in log points). The coefficient associated with the exposure to robots should be interpreted as the percent change in exports per worker growth associated with an increase of one robot per thousand workers. Standard errors are robust against heteroscedasticity and allow for clustering at the state level. The coefficients with * are significant at the 1% confidence level; with ** are significant at the 5% confidence level; and with *** are significant at the 10% confidence level.

Table 3: OLS impacts of exposure to US robots on exports (controlling for exposure to domestic automation), 2005-2014

	(1)	(2)	(3)	(4)	(5)	(6)
Panel A						
<i>robots_RCA^{US}</i>	-16.65** (6.953)	-12.03* (7.077)	-11.15 (6.995)	-12.37* (7.122)	-11.91* (7.074)	-4.760 (7.302)
<i>robots_RCA^{MX}</i>	3.820 (3.598)	3.167 (3.676)	-2.250 (4.691)	3.165 (3.682)	3.157 (3.682)	-39.71 (26.65)
Observations	1,446	1,443	1,429	1,443	1,440	1,440
Panel B						
<i>robots_RCA^{US}</i>	-9.083*** (2.457)	-5.880** (2.584)	-14.36*** (4.522)	-6.207** (2.554)	-5.774** (2.587)	-11.08* (5.912)
<i>robots_emp^{MX}</i>	-1.530 (1.661)	-0.846 (1.763)	-1.594 (1.634)	-0.908 (1.730)	-0.880 (1.774)	-4.397 (7.385)
Observations	1,446	1,443	1,429	1,443	1,440	1,440
Panel C						
<i>robots_RCA^{US}</i>	-11.27*** (2.740)	-8.728*** (2.759)	-19.45*** (4.796)	-8.829*** (2.725)	-8.614*** (2.770)	-16.71*** (5.920)
<i>robots_RCA_emp^{MX}</i>	0.822* (0.462)	1.450** (0.637)	4.635*** (0.995)	1.337** (0.623)	1.439** (0.636)	24.67*** (7.930)
Observations	1,446	1,443	1,429	1,443	1,440	1,440
State Fixed Effects	YES	YES	YES	YES	YES	YES
Initial characteristics	NO	YES	YES	YES	YES	YES
Excludes highly exposed areas	NO	NO	YES	NO	NO	NO
Manufacturing employment	NO	NO	NO	YES	NO	NO
Occupational structure	NO	NO	NO	NO	YES	NO
Excludes auto	NO	NO	NO	NO	NO	YES

Note: Standard errors are robust against heteroscedasticity and allow for clustering at the state level. The coefficients with * are significant at the 10% confidence level; with ** are significant at the 5% confidence level; and with *** are significant at the 1% confidence level.

Table 4: First-stage regressions: US (2005-2014) and Mexico (2011-2014) automation vs. Europe's and Brazil's

	(1)	(2)	(3)	(4)	(5)	(6)
Panel A: Dependent Variable: $robots_RCA^{US}$						
$robots_RCA^{EU}$	-0.00446 (0.00909)	0.955*** (0.00863)	0.980*** (0.0222)	0.953*** (0.00862)	0.956*** (0.00861)	1.384*** (0.0921)
$robots_emp^{BR}$	0.0534* (0.0301)	0.0450* (0.0273)	0.0583* (0.0337)	0.0357 (0.0251)	0.0442 (0.0271)	0.0587 (0.0445)
Observations	1,446	1,443	1,429	1,443	1,440	1,440
Panel B: Dependent Variable: $robots_RCA^{MX}$						
$robots_RCA^{EU}$	-0.340*** (0.109)	-0.333*** (0.108)	-0.614*** (0.185)	-0.330*** (0.107)	-0.333*** (0.108)	0.0715*** (0.0264)
$robots_emp^{BR}$	3.505*** (0.492)	3.497*** (0.495)	3.697*** (0.559)	3.512*** (0.496)	3.495*** (0.496)	1.374*** (0.0217)
Observations	1,446	1,443	1,429	1,443	1,440	1,440
State Fixed Effects	YES	YES	YES	YES	YES	YES
Initial characteristics	NO	YES	YES	YES	YES	YES
Excludes highly exposed areas	NO	NO	YES	NO	NO	NO
Manufacturing employment	NO	NO	NO	YES	NO	NO
Occupational structure	NO	NO	NO	NO	YES	NO
Excludes auto	NO	NO	NO	NO	NO	YES

Table 5: IV estimates of the impact of US and local automation on Mexican exports, 2005-2014

	(1)	(2)	(3)	(4)	(5)	(6)
Panel A						
<i>robots_RCA^{US}</i>	-33.93*** (12.11)	-29.82** (12.30)	-21.65* (12.10)	-27.81** (12.20)	-29.44** (12.24)	26.44 (22.26)
<i>robots_RCA^{MX}</i>	12.11** (5.791)	10.95* (5.766)	1.251 (6.701)	10.11* (5.690)	10.84* (5.743)	-222.1*** (85.85)
Observations	1,446	1,443	1,429	1,443	1,440	1,440
Panel B						
<i>robots_RCA^{US}</i>	-8.584*** (2.667)	-6.712** (2.827)	-19.17*** (5.516)	-6.454** (2.767)	-6.566** (2.828)	-30.34*** (8.522)
<i>robots_emp^{MX}</i>	-2.258 (2.275)	-1.707 (2.260)	-2.727 (1.987)	-1.514 (2.275)	-1.696 (2.245)	-8.789 (7.451)
Observations	1,446	1,443	1,429	1,443	1,440	1,440
Panel C						
<i>robots_RCA^{US}</i>	-10.87*** (2.969)	-9.175*** (3.064)	-22.81*** (5.932)	-8.670*** (2.983)	-8.999*** (3.066)	-33.88*** (8.885)
<i>robots_RCA_emp^{MX}</i>	0.815* (0.478)	1.089** (0.515)	3.765*** (0.960)	1.023* (0.524)	1.073** (0.513)	10.70 (8.661)
Observations	1,446	1,443	1,429	1,443	1,440	1,440
State Fixed Effects	YES	YES	YES	YES	YES	YES
Initial characteristics	NO	YES	YES	YES	YES	YES
Excludes highly exposed areas	NO	NO	YES	NO	NO	NO
Manufacturing employment	NO	NO	NO	YES	NO	NO
Occupational structure	NO	NO	NO	NO	YES	NO
Excludes auto	NO	NO	NO	NO	NO	YES

Note: the dependent variable is the change in the log of exports per worker from Mexico to the US (in log points). The coefficient associated with the exposure to robots should be interpreted as the percent change in exports per worker growth associated with an increase of one robot per thousand workers. Exposure to US robots and local robots are instrumented with exposure to robots in Europe and Brazil. Standard errors are robust against heteroscedasticity and allow for clustering at the state level. The coefficients with * are significant at the 10% confidence level; with ** are significant at the 5% confidence level; and with *** are significant at the 1% confidence level.

Table 6: IV estimates of the impact of US and local automation on Mexican exports (weighted), 2005-2014

	(1)	(2)	(3)	(4)	(5)	(6)
<i>robots_RCA^{US}</i>	-4.768** (2.068)	-25.55** (11.25)	-25.48** (11.15)	-24.19** (10.29)	-23.04** (10.92)	204.9 (348.5)
<i>robots_emp^{MX}</i>	0.938 (1.373)	19.01** (8.974)	18.95** (8.887)	17.29** (8.094)	17.58** (8.446)	-116.5 (197.3)
Observations	1,422	1,419	1,220	1,419	1,416	1,416
State Fixed Effects	YES	YES	YES	YES	YES	YES
Initial characteristics	NO	YES	YES	YES	YES	YES
Excludes highly exposed areas	NO	NO	YES	NO	NO	NO
Manufacturing employment	NO	NO	NO	YES	NO	NO
Occupational structure	NO	NO	NO	NO	YES	NO
Excludes auto	NO	NO	NO	NO	NO	YES

Note: the dependent variable is the change in the log of exports per worker from Mexico to the US (in log points). Regressions are weighted by total exports. The coefficient associated with the exposure to robots should be interpreted as the percent change in exports per worker growth associated with an increase of one robot per thousand workers. Exposure to US robots is instrumented with exposure to robots in Europe. Standard errors are robust against heteroscedasticity and allow for clustering at the state level. The coefficients with * are significant at the 1% confidence level; with ** are significant at the 5% confidence level; and with *** are significant at the 10% confidence level.

Table 7: IV estimates of the impact of US and local automation on Mexican net exports, 2005-2014

	(1)	(2)	(3)	(4)	(5)	(6)
<i>robots_RCA^{US}</i>	-6.557** (2.547)	-5.556** (2.757)	-16.62*** (6.196)	-5.143* (2.695)	-5.354* (2.761)	-26.93*** (8.542)
<i>robots_emp^{MX}</i>	-1.533 (2.151)	-1.231 (2.150)	-2.420 (1.945)	-0.921 (2.181)	-1.228 (2.130)	-8.233 (7.411)
Observations	1,262	1,259	1,245	1,259	1,256	1,248
State Fixed Effects	YES	YES	YES	YES	YES	YES
Initial characteristics	NO	YES	YES	YES	YES	YES
Excludes highly exposed areas	NO	NO	YES	NO	NO	NO
Manufacturing employment	NO	NO	NO	YES	NO	NO
Occupational structure	NO	NO	NO	NO	YES	NO
Excludes auto	NO	NO	NO	NO	NO	YES

Note: the dependent variable is the change in the log of exports minus imports per worker from Mexico to the US (in log points). The coefficient associated with the exposure to robots should be interpreted as the percent change in net exports per worker growth associated with an increase of one robot per thousand workers. Exposure to US robots and local robots are instrumented with exposure to robots in Europe and Brazil. Standard errors are robust against heteroscedasticity and allow for clustering at the state level. The coefficients with * are significant at the 1% confidence level; with ** are significant at the 5% confidence level; and with *** are significant at the 10% confidence level.

Table 8: IV estimates of automation on exports by origin and destination, 2005-2014

	(1)	(2)
Exports per worker, log change		
Panel A: to US		
<i>robots_RCA^{US}</i>	-6.712** (2.827)	-5.902** (2.767)
<i>robots_emp^{MX}</i>	-1.707 (2.260)	-1.514 (2.275)
Observations	1,419	1,419
Panel B: to US partners		
<i>robots_RCA^{US}</i>	-6.026** (2.739)	-6.042** (2.695)
<i>robots_emp^{MX}</i>	-1.566 (2.087)	-1.986 (2.197)
Observations	1,419	1,419
Panel C: to Non-US partners		
<i>robots_RCA^{US}</i>	-3.682 (3.209)	-3.475 (3.206)
<i>robots_emp^{MX}</i>	-0.959 (0.970)	-1.190 (1.043)
Observations	1,419	1,419
State Fixed Effects	YES	YES
Initial characteristics	YES	YES
Manufacturing sector	NO	YES

Note: the dependent variable is the change in the log of exports per worker from Mexico (in log points).

The coefficient associated with the exposure to robots should be interpreted as the percent change in exports per worker growth associated with an increase of one robot per thousand workers. Exposure to US robots and local robots are instrumented with exposure to robots in Europe and Brazil. Standard errors are robust against heteroscedasticity and allow for clustering at the state level. The coefficients with * are significant at the 1% confidence level; with ** are significant at the 5% confidence level; and with *** are significant at the 10% confidence level.

Table 9: IV estimates of automation on different trade categories, 2005-2014

	(1)	(2)	(3)	(4)
	Total	Exports,	Total Imports,	
	log change	log change	log change	
Panel A: Raw Materials				
<i>robots_RCA^{US}</i>	-3.402 (2.780)	-3.325 (2.823)	12.92** (5.412)	12.68** (5.420)
<i>robots_emp^{MX}</i>	1.160 (1.298)	1.233 (1.300)	1.061 (5.158)	0.724 (5.213)
Observations	1,443	1,443	1,443	1,443
Panel B: Intermediate goods				
<i>robots_RCA^{US}</i>	-8.614** (4.038)	-8.581** (4.057)	19.15** (7.857)	18.91** (7.872)
<i>robots_emp^{MX}</i>	3.990 (2.839)	3.953 (2.860)	-10.75* (5.576)	-10.06* (5.543)
Observations	1,443	1,443	1,443	1,443
Panel C: Capital Goods				
<i>robots_RCA^{US}</i>	-4.159 (5.339)	-4.350 (5.405)	-18.47* (10.53)	-18.65* (10.54)
<i>robots_emp^{MX}</i>	1.818 (2.038)	1.634 (1.967)	-4.553 (3.549)	-4.643 (3.640)
Observations	1,443	1,443	1,443	1,443
Panel D: Consumption goods				
<i>robots_RCA^{US}</i>	-10.41** (4.366)	-10.02** (4.384)	9.867 (8.197)	9.859 (8.179)
<i>robots_emp^{MX}</i>	-3.847 (2.805)	-3.518 (2.871)	1.611 (4.027)	1.607 (4.026)
Observations	1,443	1,443	1,443	1,443
State Fixed Effects	YES	YES	YES	YES
Initial characteristics	YES	YES	NO	YES
Manufacturing employment	NO	YES	NO	YES

Note: the dependent variable is the change in the log of exports/imports per worker from Mexico to the US (in log points). The coefficient associated with the exposure to robots should be interpreted as the percent change in exports/imports per worker growth associated with an increase of one robot per thousand workers. All imports are from the US only. Exposure to US robots and local robots are instrumented with exposure to robots in Europe and Brazil. Standard errors are robust against heteroscedasticity and allow for clustering at the state level. The coefficients with * are significant at the 1% confidence level; with ** are significant at the 5% confidence level; and with *** are significant at the 10% confidence level.

Table 10: Impacts of automation on exports: Robustness checks, 2005-2014

	(1)	(2)	(3)	(4)	(5)	(6)
Panel A: Controlling for Imports from China						
<i>robots_RCA^{US}</i>	-8.452*** (2.672)	-6.664** (2.834)	-19.10*** (5.532)	-6.424** (2.775)	-6.509** (2.835)	-30.38*** (8.527)
Panel B: Controlling for exposure to US IT investments						
<i>robots_RCA^{US}</i>	-8.490*** (2.607)	-6.639** (2.770)	-19.06*** (5.413)	-6.412** (2.717)	-6.507** (2.773)	-30.20*** (8.492)
Panel C: Controlling for exposure to US CT investments						
<i>robots_RCA^{US}</i>	-8.498*** (2.642)	-6.625** (2.796)	-19.05*** (5.471)	-6.418** (2.741)	-6.489** (2.797)	-30.84*** (8.641)
Panel D: Controlling for exposure to MX IT investments						
<i>robots_RCA^{US}</i>	-8.571*** (2.666)	-6.718** (2.830)	-19.21*** (5.517)	-6.457** (2.770)	-6.572** (2.831)	-30.44*** (8.540)
Panel E: Controlling for the share of offshoreable jobs						
<i>robots_RCA^{US}</i>	-7.387*** (2.560)	-6.326** (2.735)	-17.70*** (5.369)	-6.344** (2.707)	-6.252** (2.732)	-30.00*** (8.557)
Controlling for local automation	YES	YES	YES	YES	YES	YES
Initial characteristics	NO	YES	YES	YES	YES	YES
Excludes highly exposed areas	NO	NO	YES	NO	NO	NO
Manufacturing employment	NO	NO	NO	YES	NO	NO
Occupational structure	NO	NO	NO	NO	YES	NO
Excludes auto	NO	NO	NO	NO	NO	YES

Note: the dependent variable is the change in the log of exports per worker from Mexico to the US (in log points). The coefficient associated with the exposure to robots should be interpreted as the percent change in exports per worker growth associated with an increase of one robot per thousand workers. Exposure to US robots and local robots are instrumented with exposure to robots in Europe and Brazil. Standard errors are robust against heteroscedasticity and allow for clustering at the state level. Panel A controls for the change in the ratio of imports from China to value added in the local labor market. Panel B controls for exposure (through exports) to investments in IT (Information Technologies) per hour worked in the US. Panel C controls for exposure (through exports) to investments in CT (Communications Technologies) per hour worked in the US. Panel D controls for the ratio of domestic investments in ICT to value added in the local labor market. Panel E controls for dummy variables equal to one if the local labor market is in the second, third or fourth quartile according to the share of offshoreable jobs in 2000.

Table 11: Impacts of US automation on tradable sector employment, 2000-2015

	(1)	(2)	(3)	(4)	(5)
Panel A: Wage Employment in Tradable Sector					
<i>robots_RCA^{US}</i>	0.0473 (0.0812)	0.0235 (0.0778)	0.0246 (0.0759)	0.0254 (0.0764)	0.0216 (0.0741)
Observations	1,446	1,443	1,429	1,443	1,440
Panel B: Wage Employment in Manufacturing Sector					
<i>robots_RCA^{US}</i>	0.0122 (0.0513)	2.24e-05 (0.0474)	-0.00171 (0.0464)	0.000411 (0.0475)	0.00508 (0.0447)
Observations	1,446	1,443	1,429	1,443	1,440
Panel C: Employment in Tradable Sector (IPUMS)					
<i>robots_RCA^{US}</i>	0.0638 (0.0954)	0.0550 (0.0953)	0.0608 (0.0983)	0.0563 (0.1000)	-0.0429 (0.0928)
Observations	1,446	1,443	1,429	1,443	1,440
State Fixed Effects	YES	YES	YES	YES	YES
Exposure to local automation	YES	YES	YES	YES	YES
Trade	YES	YES	YES	YES	YES
Initial characteristics	NO	YES	YES	YES	YES
Excludes highly exposed areas	NO	NO	YES	NO	NO
Manufacturing employment	YES	YES	YES	YES	YES
Occupational structure	NO	NO	NO	YES	YES
Occupational structure	NO	NO	NO	NO	YES

Note: In panels A and B the dependent variable is the change in ratio of tradable and manufacturing sector wage employment to population older than 12 years. In panel C the dependent variable is the change in the ratio of private sector wage employment to population older than 15 years. Ratios are expressed in percentage points. The coefficient associated with the exposure to robots should be interpreted as the change in the employment measure (in percentage points) associated with an increase of one robot per thousand workers. All specifications control for exposure to local automation (both export- and employment-weighted). Standard errors are robust against heteroscedasticity and allow for clustering at the state level. The coefficients with * are significant at the 1% confidence level; with ** are significant at the 5% confidence level; and with *** are significant at the 10% confidence level.

Table 12: Impacts of US automation through trade on tradable sector employment, 2000-2015

	(1)	(2)	(3)	(4)	(5)
Panel A: Employment in Tradable Sector					
Exports, change	-0.00315 (0.00540)	-0.00157 (0.00481)	-0.00177 (0.00517)	-0.00173 (0.00481)	-0.00525 (0.0163)
Panel B: Employment in Manufacturing Sector					
Exports, change	-0.000789 (0.00312)	-5.00e-05 (0.00287)	5.76e-05 (0.00306)	-8.12e-05 (0.00290)	-0.00129 (0.00842)
Panel C: Employment in Tradable Sector					
Imports of raw materials, change	0.00516 (0.00364)	0.00386 (0.00312)	0.00334 (0.00289)	0.00391 (0.00314)	0.00106 (0.00221)
Panel D: Employment in Manufacturing Sector					
Imports of raw materials, change	0.00320 (0.00271)	0.00225 (0.00237)	0.00152 (0.00211)	0.00228 (0.00240)	-0.00115 (0.00246)
Panel E: Employment in Tradable Sector					
Imports of intermediate products, change	0.00362 (0.00233)	0.00271 (0.00197)	0.00209 (0.00158)	0.00273 (0.00196)	-0.0128 (0.125)
Panel F: Employment in Manufacturing Sector					
Imports of intermediate products, change	0.00224 (0.00185)	0.00158 (0.00162)	0.000954 (0.00127)	0.00159 (0.00163)	0.0139 (0.134)
Observations	1,446	1,443	1,429	1,443	1,440
State Fixed Effects	YES	YES	YES	YES	YES
Exposure to local automation	YES	YES	YES	YES	YES
Trade	YES	YES	YES	YES	YES
Initial characteristics	NO	YES	YES	YES	YES
Excludes highly exposed areas	NO	NO	YES	NO	NO
Manufacturing employment	YES	YES	YES	YES	YES
Occupational structure	NO	NO	NO	YES	YES
Occupational structure	NO	NO	NO	NO	YES

Note: the dependent variable is the change in ratio of tradable and manufacturing sector wage employment to population older than 12 years. The coefficient associated with the exposure to robots should be interpreted as the change in the employment measure (in percentage points) associated with an increase of one robot per thousand workers. Exports and imports are instrumented by export- and import-weighted US automation, respectively. All specifications control for exposure to local automation (both export- and employment-weighted). Standard errors are robust against heteroscedasticity and allow for clustering at the state level. The coefficients with * are significant at the 1% confidence level; with ** are significant at the 5% confidence level; and with *** are significant at the 10% confidence level.

Table 13: Impacts of exposure to US automation on employment, by level of job replaceability, 2000-2015

	(1)	(2)
	OLS	
	tradable	Manufacturing
<i>robots_RCA^{US}</i>	0.108** (0.0528)	0.0988* (0.0507)
<i>robots_RCA^{US}</i> x Replaceability	-0.261 (0.159)	-0.502*** (0.184)
Replaceability	-0.642** (0.308)	-0.144 (0.112)
Domestic Robots	-0.0341*** (0.0104)	-0.0258*** (0.00742)
State Fixed Effects	YES	YES
Initial characteristics	YES	YES
Observations	1,384	1,294
	IV	
	tradable	Manufacturing
Exports, change	-0.0126*** (0.00391)	-0.0104*** (0.00312)
Exports x Replaceability	0.0258*** (0.00532)	0.00997*** (0.00324)
Replaceability	-4.415*** (0.804)	-2.388*** (0.511)
Domestic Robots	-0.0433*** (0.0119)	-0.0335*** (0.00848)
State Fixed Effects	YES	YES
Initial characteristics	YES	YES
Observations	1,368	1,282

Note: the dependent variable is the change in ratio of tradable and manufacturing sector wage employment to population older than 12 years. "Replaceability" is the share of jobs susceptible to being replaced by robots in 2000. Standard errors are robust against heteroscedasticity and allow for clustering at the state level. The coefficients with * are significant at the 1% confidence level; with ** are significant at the 5% confidence level; and with *** are significant at the 10% confidence level.

Table 14: Impact of automation on total wage employment, 2000-2015

	(1)	(2)	(3)	(4)	(5)	(6)
<i>robots_RCA^{US}</i>	0.0364 (0.0408)	0.0121 (0.0266)	0.00259 (0.0494)	0.0331 (0.0252)	0.00976 (0.0267)	0.0457 (0.103)
<i>robots_emp^{MX}</i>	-0.0216 (0.0143)	-0.0260** (0.0128)	-0.0204* (0.0113)	-0.0205* (0.0105)	-0.0241* (0.0123)	-0.317*** (0.0721)
Initial characteristics (2000)						
% Secondary Education		-0.000331 (0.0345)	0.000316 (0.0349)	-0.0126 (0.0304)	-0.00466 (0.0339)	0.00155 (0.0332)
% Tertiary Education		-0.0898 (0.0838)	-0.0858 (0.0856)	-0.185* (0.0961)	-0.0794 (0.0850)	-0.0963 (0.0812)
% Rural		-0.00668** (0.00265)	-0.00702*** (0.00265)	-0.00627** (0.00275)	-0.00621** (0.00283)	-0.00668** (0.00264)
% Female Employment		0.0618 (0.0856)	0.0598 (0.0849)	0.0984 (0.0700)	0.0524 (0.0842)	0.0709 (0.0837)
% Employed		-0.0700*** (0.00875)	-0.0706*** (0.00873)	-0.0614*** (0.00681)	-0.0695*** (0.00852)	-0.0693*** (0.00856)
% age 20-29		0.0554 (0.141)	0.0601 (0.140)	0.0977 (0.132)	0.0451 (0.143)	0.0623 (0.137)
% age 30-49		0.195*** (0.0397)	0.193*** (0.0393)	0.163*** (0.0393)	0.196*** (0.0373)	0.194*** (0.0390)
% age 60-64		-0.161*** (0.0603)	-0.160*** (0.0595)	-0.166** (0.0727)	-0.183*** (0.0599)	-0.159*** (0.0616)
% age 65+		0.200*** (0.0326)	0.200*** (0.0327)	0.196*** (0.0400)	0.209*** (0.0331)	0.202*** (0.0327)
log(population)		0.0583 (0.0948)	0.0601 (0.0931)	-0.0124 (0.0887)	0.0507 (0.0960)	0.0649 (0.0927)
Observations	1,443	1,443	1,429	1,443	1,440	1,443
State Fixed Effects	YES	YES	YES	YES	YES	YES
Excludes highly exposed areas	NO	NO	YES	NO	NO	NO
Manufacturing employment	NO	NO	NO	YES	NO	NO
Occupational structure	NO	NO	NO	NO	YES	NO
Excludes auto industry	NO	NO	NO	NO	NO	YES

Note: the dependent variable is the change in ratio of wage employment to population older than 12 years.

Standard errors are robust against heteroscedasticity and allow for clustering at the state level. The coefficients with * are significant at the 1% confidence level; with ** are significant at the 5% confidence level; and with *** are significant at the 10% confidence level.

Table 15: Impact of automation on wage employment, by level of job replaceability, 2000-2015

	(1)	(2)	(3)
	Employment	Inactivity	Informality
<i>robots_RCA^{US}</i>	-0.0990 (0.0887)	-0.144 (0.140)	0.252 (0.230)
<i>robots_RCA^{US}</i> x Replaceability	0.263 (0.199)	0.322 (0.321)	-0.377 (0.432)
Replaceability	-0.200 (0.268)	-0.725 (1.114)	1.185 (1.079)
Domestic Robots	-0.0280** (0.0137)	-0.0176 (0.0133)	0.0516** (0.0262)
State Fixed Effects	YES	YES	YES
Initial characteristics	YES	YES	YES
Observations	1,294	1,294	1,294

Note: the dependent variable is the change in ratio of total wage employment to population older than 12 years. "Replaceability" is the share of jobs susceptible to being replaced by robots in 2000. Standard errors are robust against heteroscedasticity and allow for clustering at the state level. The coefficients with * are significant at the 1% confidence level; with ** are significant at the 5% confidence level; and with *** are significant at the 10% confidence level.

Table 16: IV estimates of the impacts of local automation on wage employment, 2000-2015

	(1)	(2)	(3)	(4)	(5)	(6)
Panel A: Wage Employment to Population Ratio						
$robots_emp^{MX}$	-0.0720*** (0.0268)	-0.0792*** (0.0173)	-0.0767*** (0.0195)	-0.0394*** (0.0133)	-0.0772*** (0.0163)	-0.254*** (0.0552)
Panel B: Total Employment to Population Ratio						
$robots_emp^{MX}$	0.0427 (0.0502)	0.00733 (0.0171)	0.0156 (0.0159)	-0.00911 (0.0168)	0.00545 (0.0165)	0.0639 (0.0600)
Panel C: Informal Employment to Total Employment Ratio						
$robots_emp^{MX}$	0.157** (0.0692)	0.155*** (0.0465)	0.149*** (0.0534)	0.0783* (0.0457)	0.152*** (0.0465)	0.509*** (0.173)
Panel D: Log monthly wage						
$robots_emp^{MX}$	-0.179 (0.300)	-0.156 (0.314)	-0.181 (0.363)	-0.138 (0.303)	-0.141 (0.276)	-0.427 (1.472)
Observations	1,443	1,443	1,429	1,443	1,440	1,443
US Automation	YES	YES	YES	YES	YES	YES
State Fixed Effects	YES	YES	YES	YES	YES	YES
Exports to US per worker, log change	YES	YES	YES	YES	YES	YES
Initial characteristics	NO	YES	YES	YES	YES	YES
Excludes highly exposed areas	NO	NO	YES	NO	NO	NO
Manufacturing Employment	NO	NO	NO	YES	NO	NO
Occupational structure	NO	NO	NO	NO	YES	NO
Excludes auto industry	NO	NO	NO	NO	NO	YES

Note: the dependent variable is the change in the wage employment to population older than 12 years. Exposure to domestic automation is instrumented with exposure to automation in Brazil.

Standard errors are robust against heteroscedasticity and allow for clustering at the state level. The coefficients with * are significant at the 1% confidence level; with ** are significant at the 5% confidence level; and with *** are significant at the 10% confidence level.

Table 17: IV estimates of the effect of domestic automation on employment, by age, 2000-2015

	(1)	(2)	(3)	(4)	(5)
Panel A. Wage Employment to Population Ratio					
	15-24 years	25-34 years	35-44 years	45-54 years	55-64 years
<i>robots_emp^{MX}</i>	-0.179*** (0.0238)	-0.0740** (0.0302)	-0.0709*** (0.0168)	-0.0138 (0.0219)	-0.0230 (0.0218)
Panel B. Informal Employment to Total Employment Ratio					
	15-24 years	25-34 years	35-44 years	45-54 years	55-64 years
<i>robots_emp^{MX}</i>	0.114*** (0.0232)	0.0860*** (0.0317)	0.105*** (0.0264)	0.0717** (0.0281)	0.0591** (0.0252)
Panel C. Inactivity to Population Ratio					
	15-24 years	25-34 years	35-44 years	45-54 years	55-64 years
<i>robots_emp^{MX}</i>	0.00648 (0.00849)	0.00980 (0.0109)	0.000758 (0.0135)	0.0105 (0.0118)	0.00749 (0.00900)
US Automation	YES	YES	YES	YES	YES
State Fixed Effects	YES	YES	YES	YES	YES
Initial characteristics	YES	YES	YES	YES	YES

Note: Exposure to domestic automation is instrumented with exposure to automation in Brazil. Standard errors are robust against heteroscedasticity and allow for clustering at the state level. The coefficients with *** are significant at the 1% confidence level; with ** are significant at the 5% confidence level; and with * are significant at the 10% confidence level.

Table 18: IV estimates of the effect of domestic automation on employment, by education, 2000-2015

	(1)	(2)	(3)	(4)	(5)	(6)
Panel A. Wage Employment to Population Ratio						
	Less than highschool		Highschool		College	
<i>robots_emp</i> ^{MX}	-0.0522*** (0.0141)	-0.0238** (0.0115)	-0.181*** (0.0163)	-0.127*** (0.0241)	-0.0486 (0.0508)	-0.0626 (0.0542)
Panel B. Informal to Total Employment Ratio						
	Less than highschool		Highschool		College	
<i>robots_emp</i> ^{MX}	0.0869*** (0.0232)	0.0286 (0.0206)	0.150*** (0.0310)	0.0972*** (0.0251)	0.0992** (0.0396)	0.0917** (0.0388)
Log Monthly Wage						
	Less than highschool		Highschool		College	
<i>robots_emp</i> ^{MX}	-0.0826 (0.278)	-0.0497 (0.253)	0.139 (0.115)	0.147 (0.107)	0.105 (0.105)	0.158 (0.135)
US Automation	YES	YES	YES	YES	YES	YES
State Fixed Effects	YES	YES	YES	YES	YES	YES
Initial characteristics	YES	YES	YES	YES	YES	YES
Manufacturing employment	NO	YES	NO	YES	NO	YES

Note: Exposure to domestic automation is instrumented with exposure to automation in Brazil. Standard errors are robust against heteroscedasticity and allow for clustering at the state level. The coefficients with * are significant at the 1% confidence level; with ** are significant at the 5% confidence level; and with *** are significant at the 10% confidence level.

Table 19: IV estimates of the effect of domestic automation on employment, by gender, 2000-2015

	(1)	(2)	(3)	(4)	(5)	(6)
Panel A: Men						
<i>robots_emp^{MX}</i>	-0.0958** (0.0437)	-0.0937*** (0.0280)	-0.0918*** (0.0310)	-0.0443** (0.0200)	-0.0914*** (0.0265)	-0.274*** (0.0917)
Panel B: Women						
<i>robots_emp^{MX}</i>	-0.0475* (0.0259)	-0.0650*** (0.0138)	-0.0624*** (0.0165)	-0.0359** (0.0147)	-0.0634*** (0.0129)	-0.234*** (0.0455)
Observations	1,443	1,443	1,429	1,443	1,440	1,443
US Automation	YES	YES	YES	YES	YES	YES
State Fixed Effects	YES	YES	YES	YES	YES	YES
Exports to US per worker, log change	YES	YES	YES	YES	YES	YES
Initial characteristics	NO	YES	YES	YES	YES	YES
Excludes highly exposed areas	NO	NO	YES	NO	NO	NO
Manufacturing Employment	NO	NO	NO	YES	NO	NO
Occupational structure	NO	NO	NO	NO	YES	NO
Excludes auto industry	NO	NO	NO	NO	NO	YES

Note: Exposure to domestic automation is instrumented with exposure to automation in Brazil. Standard errors are robust against heteroscedasticity and allow for clustering at the state level. The coefficients with * are significant at the 10% confidence level; with ** are significant at the 5% confidence level; and with *** are significant at the 1% confidence level.

Table 20: Robustness check: Impact of automation on internal migration, 2000-2010

	(1)	(2)	(3)	(4)
Exports per worker, change	-0.0240	-0.0246	-0.0232	-0.0251
	(0.0199)	(0.0162)	(0.0208)	(0.0207)
$robots_emp^{MX}$	-0.0356	-0.0598	-0.0358	-0.0353
	(0.0708)	(0.0778)	(0.0681)	(0.0714)
Observations	1,443	1,429	1,443	1,440
State Fixed Effects	YES	YES	YES	YES
Initial characteristics	YES	YES	YES	YES
Excludes highly exposed areas	NO	YES	NO	NO
Manufacturing Employment	NO	NO	YES	NO
Occupational structure	NO	NO	NO	YES

Note: Exposure to domestic automation is instrumented with exposure to automation in Brazil. The net migration rate is the difference between the number of in-migrants and out-migrants, divided by the total population of the LLM. Standard errors are robust against heteroscedasticity and allow for clustering at the state level. The coefficients with * are significant at the 1% confidence level; with ** are significant at the 5% confidence level; and with *** are significant at the 10% confidence level.

Table 21: IV estimates of the impacts automation on employment, robustness checks, 2000-2015

	(1)	(2)	(3)	(4)	(5)	(6)	(7)
	Wage Employment to Population Ratio						
<i>robots_emp^{MX}</i>	-0.0728*** (0.0151)	-0.0728*** (0.0151)	-0.0728*** (0.0151)	-0.0722*** (0.0147)	-0.0696*** (0.0144)	-0.101*** (0.0295)	-0.0749** (0.0354)
Observations	1,419	1,419	1,419	1,419	1,419	355	1,443
State Fixed Effects	YES	YES	YES	YES	YES	YES	YES
Local labor market initial characteristics	NO	YES	YES	YES	YES	YES	YES
Total fixed assets to value added, growth	YES	NO	NO	NO	NO	NO	NO
Machinery assets to value added, growth	NO	YES	NO	NO	NO	NO	NO
ICT assets to value added, growth	NO	NO	YES	NO	NO	NO	NO
Exposure to Chinese imports, growth	NO	NO	NO	YES	NO	NO	NO
Initial share of offshoreable jobs	NO	NO	NO	NO	YES	NO	NO
Dropping LLM with only one city	NO	NO	NO	NO	NO	YES	NO
Weighted by initial working age population	NO	NO	NO	NO	NO	NO	YES

Note: Exposure to domestic automation is instrumented with exposure to automation in Brazil. Standard errors are robust against heteroscedasticity and allow for clustering at the state level. The coefficients with * are significant at the 1% confidence level; with ** are significant at the 5% confidence level; and with *** are significant at the 10% confidence level.

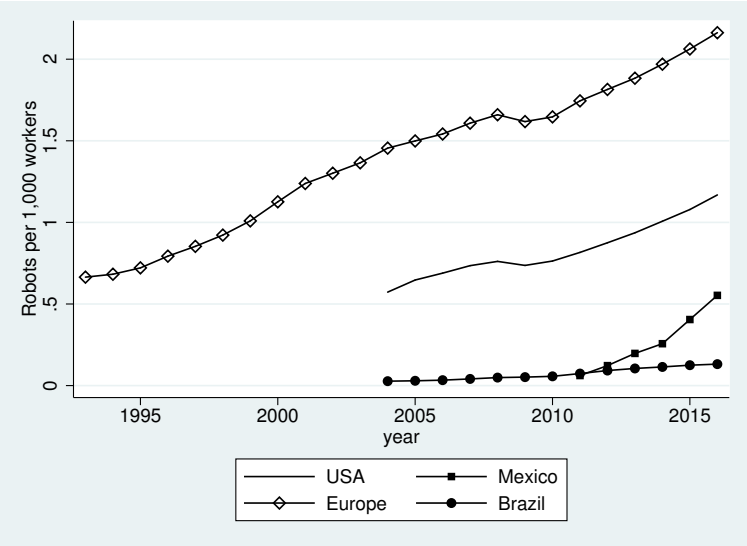
Table 22: Impacts of domestic automation on wage inequality, 2000-2015

	(1)	(2)	(3)	(4)
	50-10 ratio			
<i>robots_emp</i> ^{<i>MX</i>}	0.0214 (0.199)	0.0365 (0.217)	-0.120 (0.222)	0.495 (1.393)
Observations	1,434	1,420	1,434	1,361
	90-50 ratio			
<i>robots_emp</i> ^{<i>MX</i>}	0.524* (0.274)	0.509* (0.300)	0.415 (0.263)	2.550 (1.797)
Observations	1,434	1,420	1,434	1,361
	90-10 ratio			
<i>robots_emp</i> ^{<i>MX</i>}	0.546*** (0.177)	0.545*** (0.147)	0.294* (0.162)	2.904*** (0.599)
Observations	1,434	1,420	1,434	1,361
US automation	YES	YES	YES	YES
State Fixed Effects	YES	YES	YES	YES
Initial characteristics	YES	YES	YES	YES
Manufacturing employment	NO	NO	YES	NO
Excludes auto industry	NO	NO	NO	YES

Note: Exposure to domestic automation is instrumented with exposure to automation in Brazil. The dependent variables in Panels A, B and C are the average monthly wage ratio between the 50th and 10th, 90th and 50th, and 90th and 10th percentiles, respectively. Standard errors are robust against heteroscedasticity and allow for clustering at the state level. The coefficients with * are significant at the 10% confidence level; with ** are significant at the 5% confidence level; and with *** are significant at the 1% confidence level.

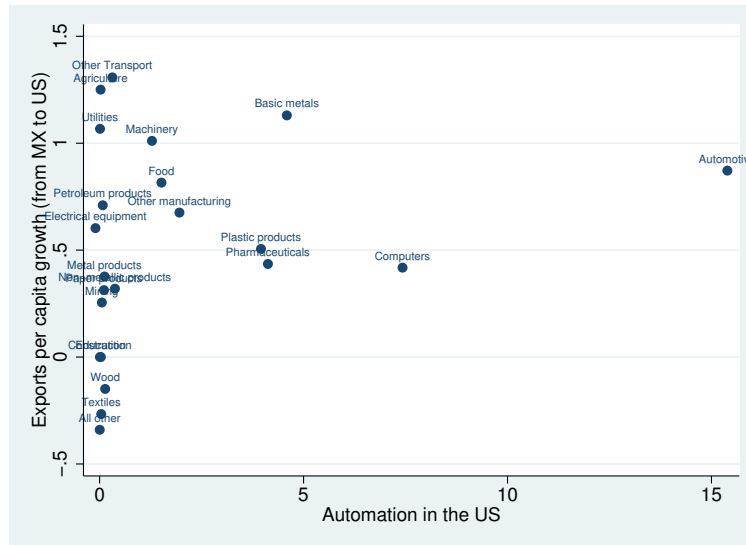
Figures

Figure 1: Stock of robots per worker



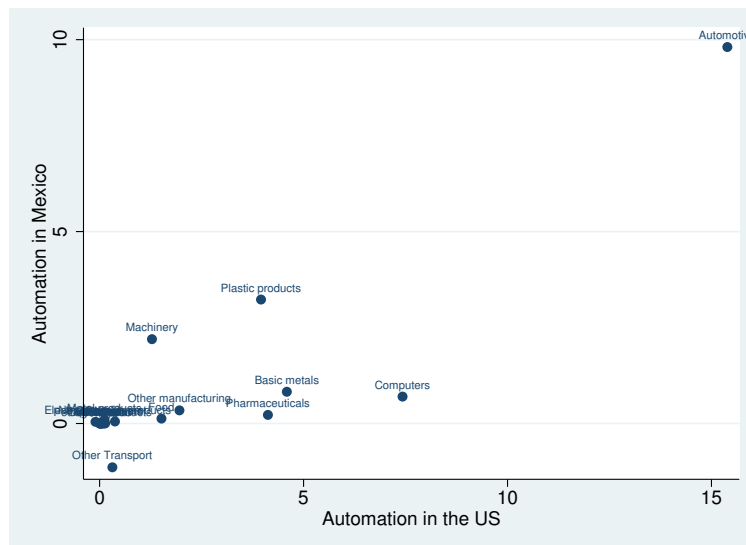
Note: the number of workers is fixed at the year 2000s values to highlight changes in the numerator.

Figure 2: Exports from Mexico to the US, vs. Automation in the US, 2004-2014



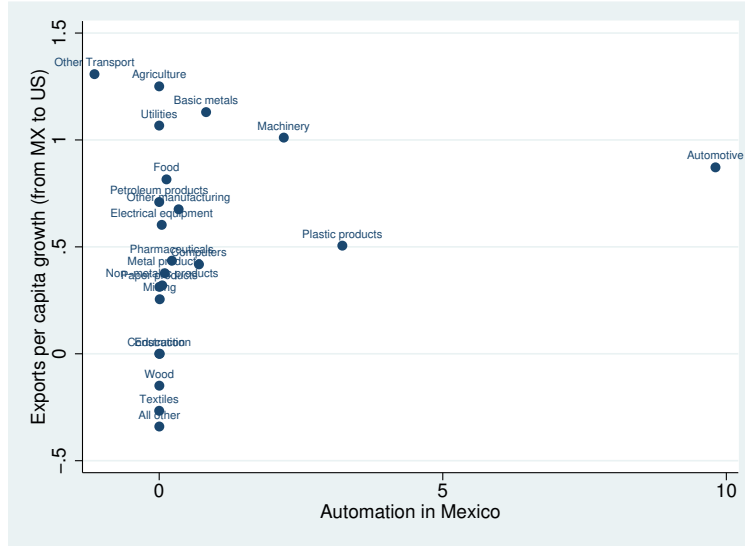
Note: the horizontal axis measures the change in the number of robots per thousand workers in the US between 2004 and 2014. The vertical axis measures the change in log exports per worker from Mexico to the US.

Figure 3: Automation in Mexico (2011-2014) vs. Automation in the US (2004-2014)



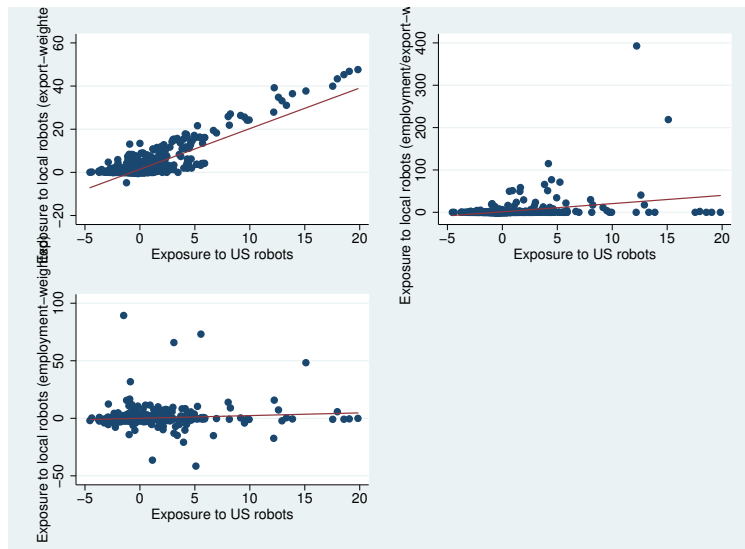
Note: the horizontal axis measures the change in the number of robots per thousand workers in the US between 2004 and 2014, while the vertical axis measures the change in the number of robots per thousand workers in Mexico between 2011 and 2014.

Figure 4: Exports from Mexico to the US (2004-2014), vs. Automation in Mexico (2011-2014)



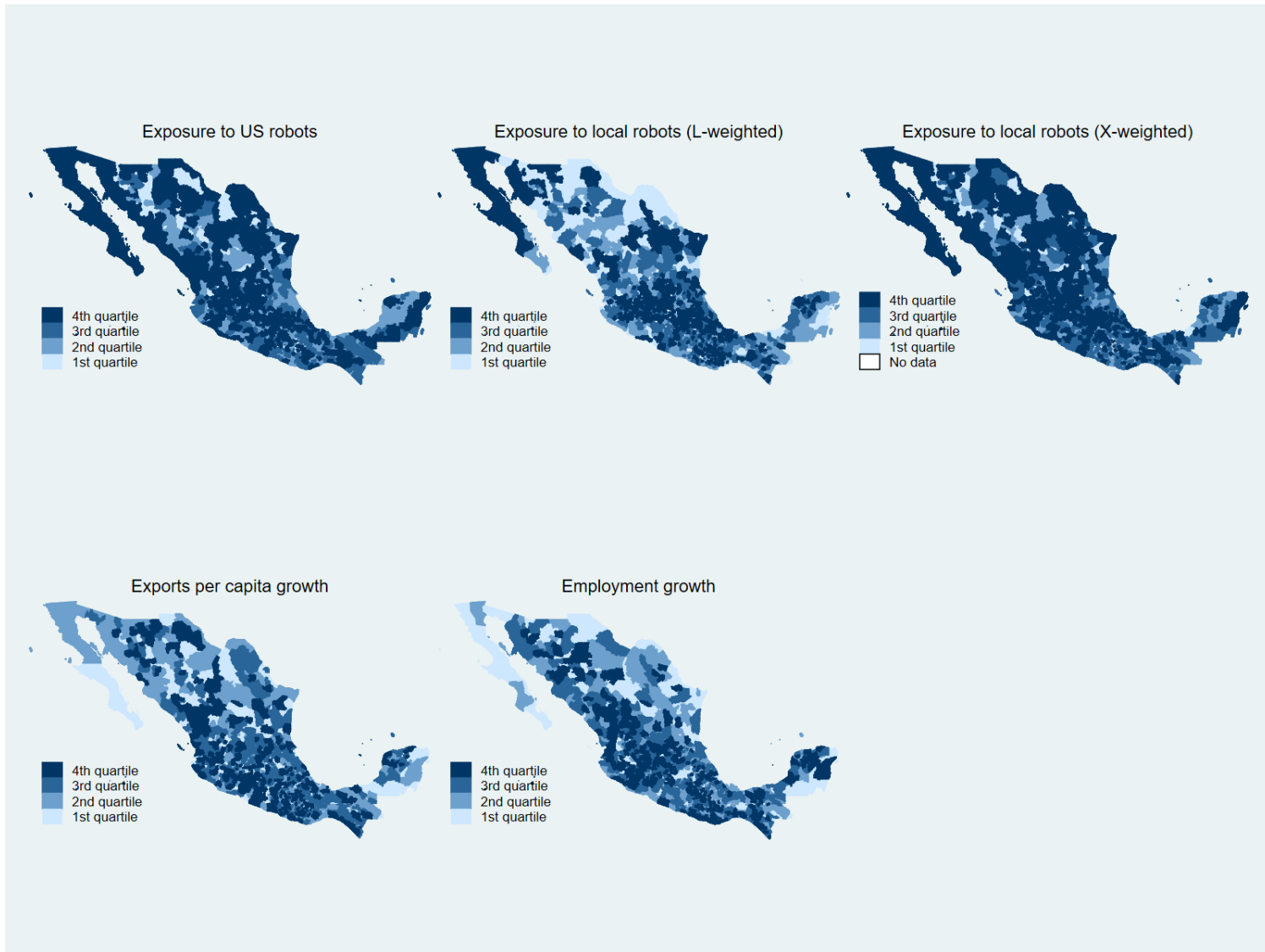
Note: the horizontal axis measures the change in the number of robots per thousand workers in Mexico between 2011 and 2014. The vertical axis measures the change in log exports per worker from Mexico to the US.

Figure 5: Exposure to automation in Mexico vs. exposure to automation in the US



Exposure to US robots from 2004 to 2014 is defined in equation (1), while the alternative measures of exposure to local robots from 2011 to 2014 are defined in equations (2) to (4).

Figure 6: Automation, Exports and Employment growth



Appendix A. Minimum Sample Size Calculation

For a power of 0.8 and a confidence level of 0.05, the minimum detectable effect (MDE) is given by:

$$|\pi^{US}| = (t_{1-\alpha/2} + t_{1-\beta})\sigma_{\pi^{US}} \quad (9)$$

Where $\pi^{US} = 0$ is the impact of exposure to US automation on Mexican employment (see equation 7), t is the Student's distribution, and $\sigma_{\pi^{US}}$ is the standard error of π^{US} .

It can be shown that:

$$\sigma_{\pi^{US}} = \sqrt{\frac{(1 - \rho_{L,R}^2)\sigma_L^2}{N\sigma_R^2}} \quad (10)$$

Where $\rho_{L,R}$ is the correlation coefficient between the change in the employment rate (L) and the exposure to US automation (R), σ_L and σ_R is the standard deviation of L and R, respectively.

Plugging equation 10 into equation 9, we can solve for $|\pi^{US}|$. We estimate $\rho_{L,R}$, σ_L and σ_R using the residuals of a regression of L and R on the covariates included in the specification of column (1) of Panel A in Table 16. For a sample size of $N \approx 1,500$, the MDE is equal to -0.0981.

If we assume that the minimum detectable effect is equal to -0.072 (equal to the estimated coefficient in column (1) of Panel A in Table 16, the minimum sample size required to detect such effect would be 2,690 (an increase of about 1,200 observations).

The minimum sample size would be smaller if σ_R were larger. In particular, if the variance of the exposure to US robots were equal to that of the exposure to domestic robots, the sample size required to detect an effect of -0.072 would only be about 532, which is a sample smaller than the original.