

Public Disclosure Authorized

Public Disclosure Authorized

Public Disclosure Authorized

Public Disclosure Authorized



ENHANCING ACCESS TO BENEFITS
WHILE LOWERING EMISSIONS



EnABLE ANNUAL REPORT

2 0 2 4



THE WORLD BANK
IBRD • IDA | WORLD BANK GROUP

Table of Contents

List of Tables, Figures, Boxes, and Maps.....	ii
Acknowledgments.....	iii
Key Trust Fund Data.....	iii
List of Acronyms.....	iv
Letter from EnABLE's Fund Manager	vii
1. Enable's Vision for Enhancing Social Inclusion in Results-Based Climate Finance.....	1
2. Priority Area 1: Enhancing the Enabling Environment	13
3. Priority Area 2: Identifying and Strengthening Opportunities for Engagement	25
4. Priority Area 3: Integrating Social Inclusion and Gender Equity	33
5. Communications, Outreach, and Collaboration.....	37
6. Monitoring and Evaluation	43
7. Challenges and Opportunities.....	47
Appendix A. Contributions and Expenses.....	51
Appendix B. Consultations and Participating Organizations	53



Tables

- 1. Status of EnABLE’s Programming as of the End of Fiscal Year 2024..... 1
- 2. Cumulative Financial Allocations for Country-Level Programming, by Region and Country, as of the End of Fiscal Year 2024.....26
 - A1. Total Contributions to EnABLE51
 - A2. Cumulative Expenses by EnABLE.....51
 - B1. Summary of Consultations/Trainings Conducted during Fiscal Year 2024.....53

Figures

- 1. Overview of EnABLE’s Strategic Focus 6
- 2. Cumulative Financial Allocations and Disbursements for Knowledge and Capacity Building, by Region and Country, as of the End of Fiscal Year 2024 15
- 3. Cumulative Share of Financial Allocations for Country-Level Programming, by Region, as of the End of Fiscal Year 202426

Boxes

- 1. The SCALE Umbrella Trust Fund..... 1
- 2. The Need to Integrate Gender Considerations across EnABLE’s Programming2
- 3. EnABLE’s Technical Advisory Group 4
- 4. EnABLE–Supported Activities under Priority Area 1.....14
- 5. A Case Study of Women’s Empowerment in Kanchanpur, Nepal22
- 6. EnABLE–Supported Activities under Priority Area 225
- 7. EnABLE Positively Influences Inclusion Criteria in Mozambique’s Benefit Sharing Plan.....43

Maps

- 1. EnABLE’s Target Countries and Status of Programming as of the End of Fiscal Year 2024..... 8



Acknowledgments

EnABLE’s annual report for fiscal year 2024 was prepared on behalf of the World Bank by the EnABLE Secretariat, led by Asyl Undeland (EnABLE Trust Fund Manager), with preparation support from EnABLE’s core team: Chie Ingvoldstad (senior operations officer), Celina Pentamah (operations consultant), and Marina Kvashnina (climate finance specialist). The EnABLE team is particularly grateful to the many Indigenous experts, and their organizations and networks, who have contributed their time, expertise, and insights over the past year, and to World Bank’s task teams from the Social Sustainability and Inclusion Global Practice, who lead EnABLE’s ground-level programming and provided invaluable country-level inputs. Special thanks are extended to Mary Jane Banks (writer/editorial consultant), Alybek Ismailov (graphic designer), and Jane Sunderland (proofreader).

Finally, EnABLE and the World Bank extend their gratitude to the government of Germany—specifically, the German Federal Ministry for Economic Cooperation and Development (BMZ) for financing this important program and Deutsche Gesellschaft für Internationale Zusammenarbeit (GIZ) GmbH for technical guidance on behalf of the BMZ.

Key Trust Fund Data

Trust Fund Name	Enhancing Access to Benefits while Lowering Emissions (EnABLE)
Donor	Federal Ministry for Economic Cooperation and Development (BMZ), Germany
Trust Fund Managing Unit	Climate Change Group Climate Finance Mobilization Unit (SCCFM)
Trust Fund Manager	Asyl Undeland
Practice Manager	Erwin De Nys (FY24)
Trust Fund End Date	December 2030
Trust Fund Amount	€50 million (approximately US\$55 million)
Progress Reporting	End of fiscal year

List of Acronyms

ACOFOP	Association of Forest Communities of Petén (Guatemala)
ACOFUN	Association of Collaborative Forest Users (Nepal)
ADITICA	Association for the Integral Development of the Cabécar Indigenous Territory (Guatemala)
AMPB	Mesoamerican Alliance of People and Forests (Costa Rica)
ANSAB	Asia Network for Sustainable Agriculture and Bioresources (Nepal)
ASODEFOREST	Association for Sustainable Forestry Development and Restoration (Dominican Republic)
BMZ	German Federal Ministry for Economic Cooperation and Development
BSP(s)	benefit sharing plan(s)
CBO(s)	community-based organization(s)
CESC	Centre for Learning and Capacity Building of Civil Society (Mozambique)
CIFOR-ICRAF	Center for International Forestry Research and World Agroforestry
CIPRED	Center for Indigenous Peoples' Research and Development (Nepal)
COP28	28th Conference of the Parties to the United Nations Framework Convention on Climate Change
CSO(s)	civil society organization(s)
DANAR	Dalit Alliance for Natural Resources (Nepal)
DFAT	Department of Foreign Affairs and Trade (Australia)
EnABLE	Enhancing Access to Benefits while Lowering Emissions
ERP(s)	emission reductions program(s)
FCPF	Forest Carbon Partnership Facility (World Bank)
FECOFUN	Federation of Community Forest Users of Nepal
FEREADD	Federation of Networks and Associations for Energy, Environment, and Sustainable Development (Côte d'Ivoire)
FFS	Fiscal & Financial Solutions (SCALE)
FILAC	Fund for the Development of Indigenous Peoples of Latin America and the Caribbean

FLACSO	Latin American Faculty of Social Sciences
FNDS	National Fund for Sustainable Development (Mozambique)
FONAFIFO	National Forestry Financing Fund (Costa Rica)
FPIC	free, prior, and informed consent
FUNBAM	Environmental Development Bank (Costa Rica)
FY24	fiscal year 2024 (July 1, 2023, to June 30, 2024)
GFL	Northern Lao Governance, Forest Landscapes, and Livelihood project
GIZ	Deutsche Gesellschaft für Internationale Zusammenarbeit (GIZ) GmbH
HIA(s)	Hotspot Intervention Area(s)
HRIE	Human Rights, Inclusion, and Empowerment
INAB	National Forest Institute (Guatemala)
INCOLI	Institute for Community Livelihoods (Viet Nam)
INDOCAFE	Dominican Coffee Institute
IARNA	Institute of Agriculture, Natural Resources and Environment, University Rafael Landivar (Guatemala)
IEG	Independent Evaluation Group
INDER	Costa Rican Institute for Rural Development
INTEC	Climate Change and Resilience Observatory, Santa Domingo Institute of Technology (Dominican Republic)
IPs	Indigenous Peoples
ISFL	BioCarbon Fund's Initiative for Sustainable Forest Landscapes (World Bank)
Lao PDR	Lao People's Democratic Republic
LCs	local communities
M&E	monitoring and evaluation
MEL	monitoring, evaluation, and learning
MFF	Ministry of Fisheries and Forestry (Fiji)
MINAE	Ministry of Environment and Energy (Costa Rica)
MPIDO	Mainyoito Pastoralist Integrated Development Organization (Kenya)
MRV	measurement, reporting, and verification

MTACHA	Ministry of iTaukei Affairs, Culture Heritage and Art (Fiji)
NCIP	National Commission on Indigenous Peoples (the Philippines)
NCS	Natural Climate Solutions (SCALE)
NEFIN	Nepal Federation of Indigenous Nationalities (Nepal)
NFDIN	National Foundation for the Development of Indigenous Nationalities (Nepal)
NIWF	National Indigenous Women's Federation (Nepal)
NGO(s)	nongovernmental organization(s)
PROGREEN	Global Partnership for Sustainable and Resilient Landscapes (World Bank)
RBCF	results-based climate finance
RDN	Rastriya Dalit Network (Nepal)
RECOFTC	Regional Community Forestry Training Center (Lao PDR)
REDD+	Reducing Emissions from Deforestation and Forest Degradation, plus the sustainable management of forests, and the conservation and enhancement of forest carbon stocks
RIBCA	Bribri and Cabecar Indigenous Network (Costa Rica)
SCALE	Scaling Climate Action by Lowering Emissions (World Bank)
SCCFM	Climate Change Group Climate Finance Mobilization Unit (World Bank)
SIS	Sustainable Infrastructure Solutions (SCALE)
SISAP	Social Inclusion Strategy and Action Plan (EnABLE)
SSI	Social Sustainability and Inclusion
SWA	Solidaridad West Africa
TAG	Technical Advisory Group (EnABLE)
TLTB	iTaukei Land Trust Board (Fiji)
UNPFII	United Nations Permanent Forum on Indigenous Issues

LETTER FROM EnABLE'S FUND MANAGER

EnABLE is unique among the World Bank's approaches to its development goals. The fund was founded on the principle of partnering with local civil society organizations to provide direct financing to Indigenous, local, and other disadvantaged communities and vulnerable groups with the intention of strengthening their engagement in decision-making forums and climate mitigation initiatives to amplify their access and benefits. With this core purpose at the forefront of our actions, fiscal year 2024 was a defining year for EnABLE.

A key milestone was the successful implementation of programming in Ghana, Indonesia, and Mozambique—the culmination of years of work disseminating information, building knowledge and capacity, identifying networks, forging collaborations, and eliciting feedback to inform the design of activities to meet each country's specific needs and priorities. Efforts this year also laid the groundwork for future programming in Costa Rica, the Lao People's Democratic Republic, and Nepal, with preparations also instigated in the Dominican Republic, Fiji, Madagascar, and several other countries.

Another milestone, the Indigenous Peoples and Local Communities Global Dialogue on Climate Finance, provided Indigenous and local community representatives with a forum to discuss, hone, and share their perspectives on the design and implementation of emission reductions programs and related benefit sharing plans. This event, along with numerous smaller meetings and consultations throughout the year, succeeded in generating focused and actionable feedback to inform strategic directions for EnABLE's programming.

Looking ahead, more of the groundwork laid to date will be translated into tangible impacts. Our commitment to improving the lives and livelihoods of our constituencies while protecting the forest landscape through sustainable management strengthens our ability to build trust, foster equity, innovate change, and create resilient systems through which all stakeholders have a strong voice in shaping the future—especially those who have been the main custodians of the forests but have been traditionally marginalized.

As we continue this journey, I want to express my deepest gratitude to our partners, and especially our primary donor, the German Federal Ministry for Economic Cooperation and Development (BMZ), along with Deutsche Gesellschaft für Internationale Zusammenarbeit (GIZ) GmbH for technical guidance on behalf of the BMZ. Your support has been instrumental in our achievements thus far, and it will be equally vital as we work to realize our vision of a more inclusive and sustainable future. The key work on the ground is led by our colleagues from the World Bank's Social Inclusion and Sustainability Global Practice, whose knowledge, experience, and dedication transform our aspirations into reality. Finally, without our Technical Advisory Group of Indigenous Peoples' experts on climate finance, we would not be able to develop a program that is well aligned with the needs and interests of this key stakeholder.

Asyl Undeland
EnABLE Trust Fund Manager

1. ENABLE'S VISION FOR ENHANCING SOCIAL INCLUSION IN RESULTS-BASED CLIMATE FINANCE

Overview

Established in December 2020 as a standalone multidonor trust fund, Enhancing Access to Benefits while Lowering Emissions (EnABLE) is a global knowledge, operations, and technical assistance program that provides direct financing to Indigenous Peoples (IPs), local communities (LCs), and other vulnerable groups through their local civil society organizations (CSOs) with the intention of facilitating their participation in results-based climate finance (RBCF) initiatives to amplify their access and benefits. More specifically, EnABLE focuses on the emission reductions program (ERP) jurisdictions of the 15 Carbon Fund countries of the Forest Carbon Partnership Facility (FCPF), with ambitions to extend this support to five ERPs under the BioCarbon Fund's Initiative for Sustainable Forest Landscapes (ISFL) and to be associated with the World Bank's Scaling Climate Action by Lowering Emissions (SCALE) umbrella trust

fund (Box 1). Importantly, EnABLE also addresses gender considerations affecting all of these groups because women and girls commonly face additional barriers to inclusion, especially in male-dominated societies (Box 2).

Global Context

Alongside efforts to reduce deforestation, the preservation of forests and ecosystems as carbon sinks is essential for achieving emission reductions in line with the goals of the Paris Agreement. Every year, forests absorb a net 7.6 billion metric tons of CO₂ from the atmosphere, acting as vital carbon sinks. However, their capacity to sequester carbon is increasingly diminishing due to deforestation and land degradation, which—among other dire consequences—exacerbate the negative impacts of climate change. Forests not only store carbon but also are home to a vast array of biodiversity. They provide essential ecosystem services, such as regulating water flows, preventing soil

BOX 1. The SCALE Umbrella Trust Fund

Scaling Climate Action by Lowering Emissions (SCALE) is a trust-funded umbrella partnership designed to support countries accelerate their low-carbon development by mobilizing affordable finance. It both facilitates the delivery of direct climate finance and supports countries to overcome barriers in accessing funding via carbon markets, including from private sector actors.

Leveraging over two decades of World Bank expertise, SCALE provides high-impact concessional finance to support countries to generate and transact high-integrity, socially inclusive carbon credits. This support further facilitates their access to international carbon markets and the affordable finance available for achieving domestic climate targets. To drive transformative change, SCALE is organizing its work into three priority pillars:

1. Natural Climate Solutions (NCS), including agriculture, forestry, and the blue economy

2. Sustainable Infrastructure Solutions (SIS), including energy, industry, transport, urban infrastructure, and water

3. Fiscal & Financial Solutions (FFS), including fossil fuel subsidy reform, carbon taxation, green bonds, and financial sector reform

Each pillar seeks to increase the climate ambition of countries by supporting them to generate carbon credits, through targeted investments, capacity building, and innovative financing mechanisms. Moving forward, it is intended that EnABLE will be associated with SCALE and operate across all three pillars.

Source: World Bank 2024.

BOX 2. The Need to Integrate Gender Considerations across EnABLE's Programming

Gender issues cut across all of EnABLE's programming, intersecting with all the Indigenous and local communities and groups that form its target constituencies. Women and girls in these communities face additional barriers to inclusion in society and, hence, to sharing the potential benefits of results-based climate finance initiatives. In many countries and contexts, women's rights and access to information and knowledge forums are dependent on their male relatives (husbands, fathers, and so on) and on their status as members of their communities—for example, as single, married, or widowed women; as migrants or members of minority and vulnerable groups, including youth, people with disabilities, and the aged; and in terms of their levels of education and empowerment.

As an example, while lack of recognized land tenure is an overarching issue for Indigenous and local communities, it is an even more complex issue for women in these communities. Women can lose any rights to land and resources they may have—and potentially their homes and even livelihoods—when they divorce or are widowed, and migrant women who lack family are unable to obtain rights through inheritance. And even in cases where women's rights are recognized, they often preclude adequate representation in decision-making processes. Women are often discouraged from or fearful of participating in public forums, and their household, caregiving, and agriculture-related responsibilities can limit their ability to take advantage of information-sharing and capacity building opportunities. A further barrier identified that limits women's participation is the lack of pathways to leadership roles (and most likely a lack of role models).

The absence of women in decision-making on climate finance undermines the credibility and legitimacy of the process and leaves unacceptable gaps in the knowledge base. In short, all the arguments used to advocate the inclusion of Indigenous Peoples and local communities in climate finance processes also apply to the inclusion of women. For these and a multitude of other reasons, EnABLE supports the mainstreaming of gender issues across its portfolio of programming.

Source: EnABLE/World Bank 2024.

erosion, and protecting communities from floods. In many cases, forests are home to culturally rich and diverse Indigenous and local communities whose ties to these (often) ancestral lands and ecosystems run deep.

Article 6 of the Paris Agreement provides a framework for international collaboration to meet climate targets, including through market-based mechanisms, such as carbon credits, which are closely linked with efforts to conserve forests. Many interventions associated with carbon markets are implemented in forests and focus on averting deforestation and promoting reforestation and afforestation. Voluntary carbon markets allow companies and organizations to purchase carbon credits generated from these initiatives to create incentives to reduce, remove, or avoid greenhouse gas emissions. By preserving and restoring forests, these markets directly contribute to global emission reductions while promoting biodiversity and supporting essential ecosystem services.

Through their longstanding stewardship of forests, IPs and LCs play a crucial role in conservation. Traditional Indigenous and local knowledge and sustainable land management practices often align with climate mitigation strategies. Nevertheless, only a small share of IPs' and

LCs' ancestral lands are legally recognized, and forest-dependent groups' representation in global climate policy decisions is insufficient. Integrating Indigenous and local expertise into forest conservation initiatives, including REDD+ and voluntary carbon market projects, ensures that these efforts respect cultural heritage and secure equitable complementary benefits (known as noncarbon benefits or "co-benefits"), such as land tenure, biodiversity preservation, and improved livelihoods.

Since its inception in 2008, the FCPF has worked with countries and donors to develop frameworks for REDD+ readiness and implementation, outlining specific policies and initiatives to reduce emissions from deforestation and enhance carbon sequestration. Building on these foundations, FCPF works to assist countries in shaping policies and directing investments through its ERPs. Lessons from these initiatives demonstrate the efficacy of innovative financing mechanisms—such as RBCF under REDD+ and carbon credit schemes certified with robust standards—in generating effective incentives for forest preservation. Nevertheless, voluntary carbon markets pose challenges related to the integrity of carbon credits, with potential risks to IPs and LCs, as well as other disadvantaged and vulnerable groups. Issues such as unclear land tenure rights can

also hinder REDD+ progress significantly. Secure land and forest tenure is increasingly being viewed as a critical co-benefit of RBCF initiatives, as well as being essential to IPs' and other forest-dependent groups' ability to manage their resources sustainably and be eligible to access the benefits of RBCF initiatives.

In this context, EnABLE was established for the purpose of promoting social inclusion in the design and implementation of ERPs and related benefit sharing plans (BSPs) by directly promoting and supporting strategies that mitigate its constituencies' risks, enhance their meaningful engagement, and amplify their benefits. Notably, as part of its efforts to ensure the viability of carbon markets for both the planet and its people, at the United Nations yearly climate change conference (COP28) in December 2023, the World Bank launched its ["High Integrity, High Impact: World Bank Group Engagement Roadmap for Carbon Markets,"](#) which aligns with the principles of social integrity under REDD+ to ensure the long-term sustainability of climate actions.

EnABLE Governance

EnABLE Steering Committee

The EnABLE Steering Committee provides strategic guidance for the fund's activities, endorses workplans and budgets, and reviews progress based on EnABLE's results framework. The committee is chaired by the practice manager of the World Bank's Climate Finance Mobilization Unit (SCCFM), and meetings are facilitated by the EnABLE Secretariat. Members include representatives of donor organizations and the World Bank, with support from technical experts. The committee meets once each year. In fiscal year 2024 (FY24), the meeting was held in Bonn in June to discuss the year's progress and achievements, review and approve the FY25 workplan and budget, and review country programming proposals for Fiji and Madagascar. In addition, the EnABLE Secretariat organized two technical meetings in FY24: in November 2023, to reflect on the Global Dialogue and review progress on knowledge and capacity building activities, and in March 2024, to be updated by country teams on the preparation of country programming.

EnABLE Technical Advisory Group

EnABLE's Technical Advisory Group (TAG) was established with the intention of securing strategic and technical programming guidance. TAG comprises Indigenous technical experts who have solid experience and expertise actively working with

EnABLE's constituencies. TAG members also have a deep understanding of RBCF and the issues associated with designing and implementing ERPs. Members act as observers at EnABLE Steering Committee meetings to provide feedback and guidance on behalf of constituencies (Box 3).

EnABLE Secretariat

Led by Fund Manager Asyl Undeland, the EnABLE Secretariat supports the EnABLE Steering Committee by managing the fund, which includes overseeing coordination, fundraising, funds disbursement, and monitoring and reporting on activities; representing EnABLE in global, regional, national, and local forums; and disseminating information and updates on EnABLE's activities through communications and outreach. The secretariat also provides technical support and capacity building, and facilitates communication among EnABLE's country teams.

EnABLE's Programming

Strategic Directions

1. Fostering a portfolio of strategic social inclusion interventions, with no more than 40 percent of financing being allocated to support knowledge generation, dissemination, and sharing activities, which involve developing methodologies, guidelines, and training materials that align with ambitious strategies and actions within REDD+ and other RBCF initiatives; this also includes capacity building for World Bank task teams, civil society organizations (CSOs), South-South exchanges among those engaged to implement operations, and government and private sector partners.
2. Providing a source of direct climate finance for IPs, LCs, and their local CSOs and nongovernmental organizations (NGOs), with at least 60 percent being directly channeled through them and to their constituencies; this involves support to strengthen relevant community-based partnerships and networks and to build the capacities of local CSOs and networks that represent marginalized communities.
3. Amplifying constituencies' access to carbon and noncarbon benefits arising from climate mitigation initiatives; this involves supporting the design of methodologies and fostering collaborations and partnerships that amplify constituencies' noncarbon benefits, especially in such areas as securing land tenure, conserving biodiversity, and promoting gender equality.

BOX 3. EnABLE's Technical Advisory Group

EnABLE's Technical Advisory Group (TAG) was conceived for the purpose of providing guidance and feedback to the Enable Secretariat to ensure that the fund's programming adequately addresses the needs of its target beneficiaries in terms of social inclusion and gender equality, initially in the emission reductions programs of the Forest Carbon Partnership Facility's Carbon Fund countries. A secondary responsibility is to provide technical guidance, as requested by the EnABLE Secretariat, on relevant knowledge products and documents that it produces.

TAG members include representatives of Indigenous and local communities, relevant civil society organizations, youth, and people with disabilities, as well as individuals with appropriate expertise in gender issues representing the world's different cultural regions. Gender representation within TAG is also balanced.

Source: EnABLE/World Bank 2024.

4. Improving the effectiveness and efficiency of ERP preparation and implementation; this first includes plans to launch a monitoring, evaluation, and learning framework that captures lessons learned and generates demand-driven knowledge, and second, engaging global RBCF stakeholders for the purpose of expanding EnABLE's programming beyond its current 15 Carbon Fund countries to include ISFL and SCALE operations.
5. Fundraising and securing up to US\$200 million to support EnABLE's plans to expand its coverage; as of the end of FY24, direct pledges included €50 million from Germany/BMZ to support inclusion in FCPF's Carbon Fund countries (approximately US\$55 million as of June 30, 2024).

Programming Structure

EnABLE's programming falls into two categories: (1) knowledge and capacity building, at local, regional, and global levels, and (2) country-level programming. Knowledge and capacity building activities develop, expand, and strengthen capacity among constituencies, as well as the people and institutions implementing ERPs and BSPs (Figure 1). Knowledge building supports information dissemination and knowledge sharing while strengthening constituencies' understanding of ERPs and BSPs and the ways they can participate and benefit. Importantly, to truly build understanding, trust, and respect, knowledge transfer must be a two-way process, flowing not only to EnABLE constituencies but also from them to implementers, government agencies, and other stakeholders. Most of EnABLE's knowledge and capacity building activities are executed jointly by World Bank task teams and local CSOs.

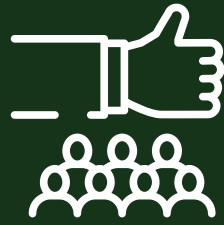
EnABLE's country programming—either as standalone projects or components of other projects—takes the form of targeted investments in well-defined and designed activities that meet the needs and priorities of the specific context. Country-level programming also pilots and implements innovative approaches to engagement with a view to replicating and upscaling them easily in other contexts. EnABLE's country programming is mostly implemented by the IPs' and LCs' networks and groups, and by local CSOs determined by the World Bank to be financially sound, have a strong track record, and have satisfactory arrangements in place to be able to disburse and account for grant funds. These organizations must also be endorsed by national governments as a prerequisite to formalizing any agreement with the World Bank. National or jurisdiction-level advisory services for capacity building can also be executed by the World Bank depending on local circumstances. The implementation period—determined to align with and support the implementation of the BSPs—is typically three to four years from the approval and signing of the grant agreement. The World Bank's task team leaders are responsible for preparing and supervising EnABLE-financed activities according to the World Bank's policies and standards.

Status of Programming as of the End of Fiscal Year 2024

As of the end of FY24, EnABLE's knowledge and capacity building programming was active or completed in 13 countries, country-level programming had been endorsed by the EnABLE Steering Committee in 8 countries, and agreements between the World Bank and the respective implementing agencies had been signed for 3 countries (Map 1, Table 1).



FIGURE 1. Overview of EnABLE's Strategic Focus



ONE GROUP OF CONSTITUENCIES

EnABLE's constituencies comprise Indigenous Peoples (IPs)—as the overarching priority—along with local communities (LCs) and other economically and socially disadvantaged and vulnerable groups, such as women, young people, and people with disabilities.



ONE OVERARCHING GOAL

EnABLE aims to increase direct finance to its constituencies within target results-based climate finance initiatives to ensure social inclusion and gender equality, and to amplify benefits. Examples of activities supported include strengthening the recognition of IPs and LCs, securing land tenure, investing in small-scale infrastructure to support low-carbon and resilient livelihoods, and developing project proposals to access funding through benefit sharing plans.



FIGURE 1.

THREE THEMATIC PRIORITIES



1. Enhancing the Enabling Environment

EnABLE's programming strengthens constituencies' capabilities to engage in emission reductions programs and benefit sharing plans, and includes supporting an enabling environment through favorable policy and legal frameworks.



2. Identifying and Strengthening Opportunities for Engagement

EnABLE's programming supports collaboration and partnerships of target constituencies with key stakeholders, ensuring that they lead and benefit from results-based climate finance through well-designed activities that support benefit sharing and can be easily replicated and upscaled.



3. Integrating Social Inclusion and Gender Equity

EnABLE's programming embeds social inclusion and gender equity into the design and implementation of results-based climate finance programs by sharing knowledge and best practices.

THREE GUIDING PRINCIPLES



1. Activities focus on country-specific emission reductions programs and benefit sharing plans to promote participation in them by EnABLE's constituencies

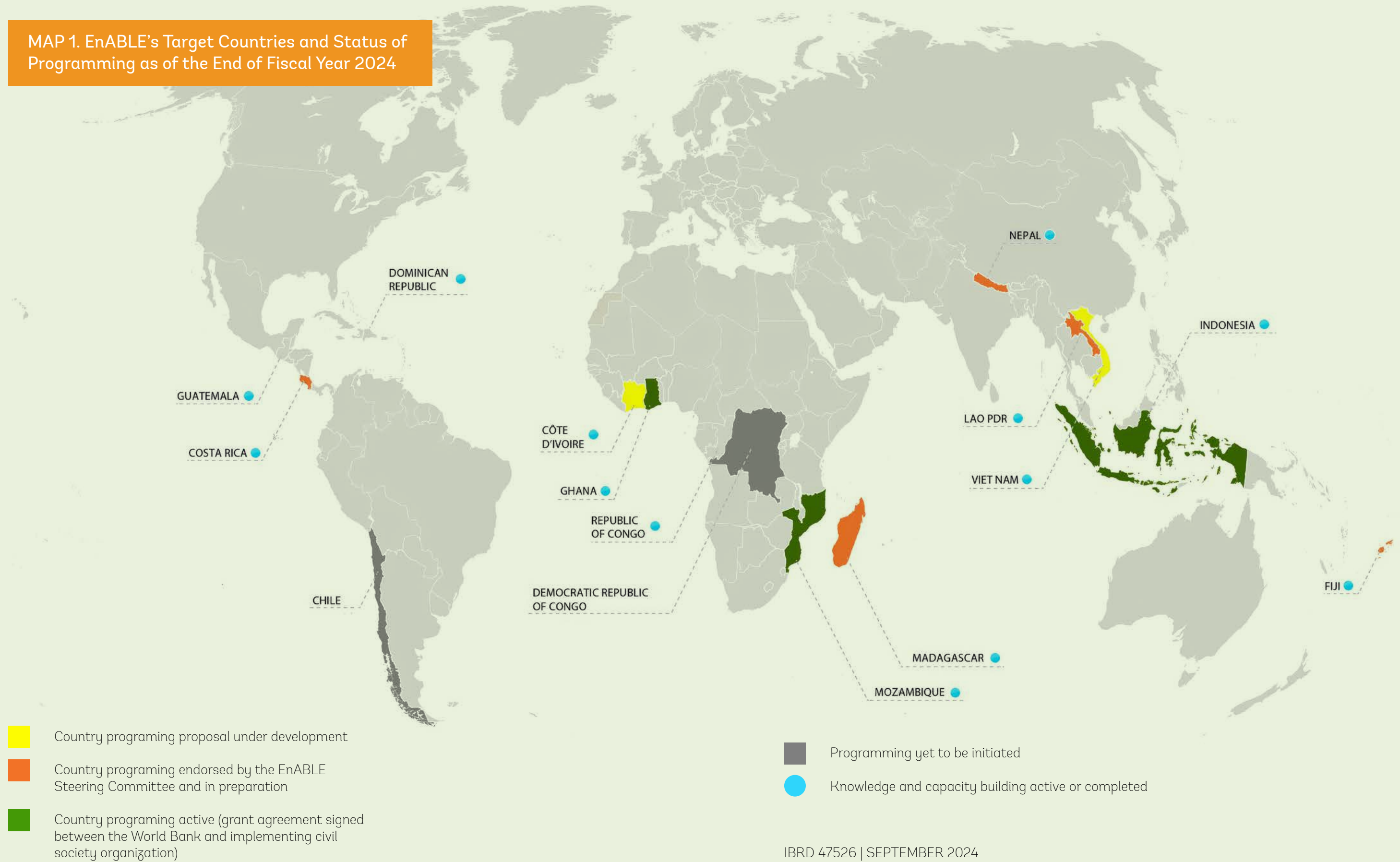


2. Activities are intended to be executed by the recipients through local civil society organizations



3. Activities are implemented based on stakeholder partnerships among target constituencies with civil society organizations, government agencies, and private sector actors

MAP 1. EnABLE’s Target Countries and Status of Programming as of the End of Fiscal Year 2024



- Country programming proposal under development
- Country programming endorsed by the EnABLE Steering Committee and in preparation
- Country programming active (grant agreement signed between the World Bank and implementing civil society organization)

- Programming yet to be initiated
- Knowledge and capacity building active or completed

TABLE 1. Status of EnABLE's Programming as of the End of Fiscal Year 2024

Region/country	Estimated project duration	Indicative project cost (US\$, millions)	Knowledge and capacity building initiated	Knowledge and capacity building ongoing/completed
Africa (6)				
Congo, Democratic Republic of	Activities yet to be initiated			
Congo, Republic of	TBD	TBD	FY24	Ongoing
Côte d'Ivoire	TBD	TBD	FY24	Ongoing
Ghana	2024–27	4.0	FY22	Completed FY24
Madagascar	TBD	4.0	FY22	Ongoing
Mozambique	2024–26	4.0	FY22	Completed in FY24
Latin America and the Caribbean (4)				
Chile	Activities yet to be initiated			
Costa Rica	2024–27	4.0	FY22	Completed in FY23
Dominican Republic	TBD	TBD	FY24	Ongoing
Guatemala	TBD	TBD	FY22	Ongoing
East Asia and Pacific (4)				
Fiji	2024–27	4.0	FY24	Ongoing
Indonesia	2024–27	4.0	FY22	Completed FY23
Lao People's Democratic Republic	2024–27	3.0	FY22	Completed FY23
Viet Nam	TBD	TBD	FY22	Ongoing
South Asia (1)				
Nepal	2024–27	4.0	FY22	Completed FY24

TABLE 1.

Region/country	Status of country programming			
	Proposal under development	Proposal endorsed	Programming preparation activated	World Bank agreement signed
Africa (6)				
Congo, Democratic Republic of	Activities yet to be initiated			
Congo, Republic of	–	–	–	–
Côte d'Ivoire	FY24	–	–	–
Ghana	FY22	FY23	FY23	FY24
Madagascar	FY22	FY24	FY24	–
Mozambique	FY23	FY23	FY23	FY24
Latin America and the Caribbean (4)				
Chile	Activities yet to be initiated			
Costa Rica	FY22	FY23	FY23	–
Dominican Republic	FY25	–	–	–
Guatemala	FY25	–	–	–
East Asia and Pacific (4)				
Fiji	FY24	FY24	FY24	–
Indonesia	FY22	FY23	FY23	FY24
Lao People's Democratic Republic	FY22	FY23	FY23	–
Viet Nam	FY24	–	–	–
South Asia (1)				
Nepal	FY22	FY23	FY23	–

Source: EnABLE/World Bank 2024.

Note: TBD = to be determined.



2. PRIORITY AREA 1: ENHANCING THE ENABLING ENVIRONMENT

Knowledge and capacity building is at the forefront of EnABLE's focus on enhancing the enabling environment to support constituencies' ability to engage in RBCF initiatives and to access the potential carbon and noncarbon benefits offered (Box 4). An important complementary output of these activities is the information they generate

for incorporation into the design and implementation of EnABLE's country programming, ensuring that it is informed by robust, inclusive, and evidence-based practices. See Figure 2 for an accounting of EnABLE's cumulative financial allocations and disbursements for knowledge and capacity building activities as of the end of FY24.



BOX 4. EnABLE-Supported Activities under Priority Area 1

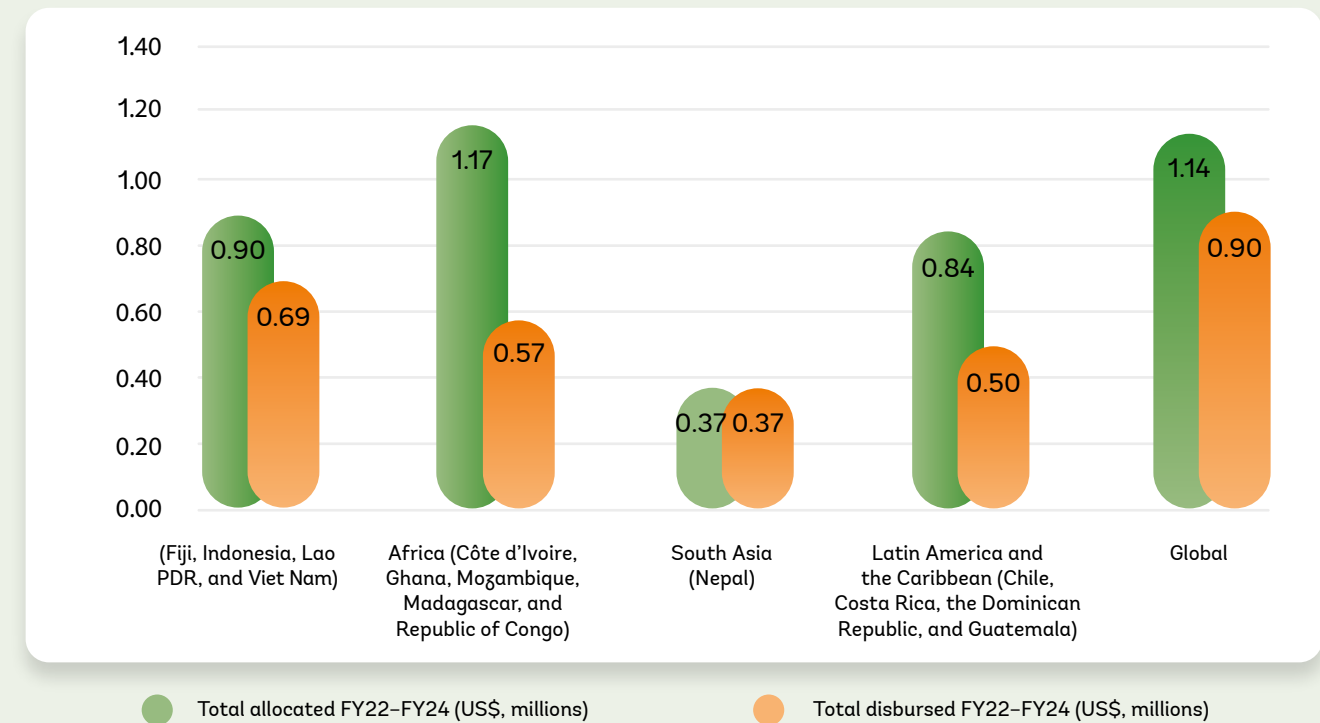
Under its first priority, to strengthen constituencies' capacity to engage in emission reductions programs and benefit sharing plans, including supporting an enabling environment through favorable policy and legal frameworks, EnABLE supports the following activities:

1. Creating culturally relevant communications materials and strategies to engage target constituencies within emission reductions programs for the purpose of increasing their awareness of both the risks and opportunities presented by results-based climate finance
2. Enhancing multistakeholder platforms and fostering partnerships and networks to support climate change mitigation and adaptation efforts
3. Developing target constituencies' technical, financial, and resource-management skills, particularly focusing on their ability (a) to understand the principles, processes, and terms of carbon financing, and (b) to develop, implement, manage, and report effectively on emission reductions programs and benefit sharing arrangements, which includes integrating community-based monitoring and evaluation, safeguard mechanisms, and gender-equity considerations
4. Supporting legal and policy frameworks by providing technical assistance to governments and civil society organizations in managing the negative impacts of transitions and maximizing development opportunities and noncarbon benefits

Source: EnABLE/World Bank.



FIGURE 2. Cumulative Financial Allocations and Disbursements for Knowledge and Capacity Building, by Region and Country, as of the End of Fiscal Year 2024



Source: World Bank 2024.

Global and Regional Knowledge and Capacity Building



INDIGENOUS PEOPLES GLOBAL DIALOGUE ON CLIMATE FINANCE

Enabling Indigenous Peoples and Local Communities to Engage in and Benefit from Results-Based Climate Finance

Arguably the most significant milestone of FY24—especially in terms of two-way knowledge generation and sharing—was the Global Dialogue *Enabling Indigenous Peoples and Local Communities to Engage in and Benefit from Results-Based Climate Finance*, held in San José, Costa Rica, November 6–9, 2023. This powerful event brought together more than 60 leaders and experts representing IPs and LCs from around the world. The objective was to facilitate meaningful discourse by IPs and LCs on their engagement in and ability to benefit from RBCF, including decision-making processes, implementation mechanisms, and access to benefits. Content and facilitation were led by an Indigenous Steering Group, who not only moderated the event but also prepared the discussion topics and selected the speakers and invitees.

The Global Dialogue was jointly organized by EnABLE and FCPF, together with BMZ and GIZ. Crucial support was provided by the World Bank’s and GIZ’s local teams in Costa Rica, as well as by the Costa Rican government, which hosted the dialogue. Over the course of the event, participants explored three key themes selected by the Steering Group: (1) mechanisms to facilitate direct financing and benefit sharing; (2) direct representation and participation in consultations and decision-making on RBCF initiatives; and (3) approaches to enhancing inclusion in climate resilience and RBCF initiatives in response to underlying barriers and challenges. Each theme was covered through a panel discussion, regional discussion groups, presentations of regional findings, and further discussion and agreement on overarching implications.

Day Three involved field trips to the Cabécar de Chirripó Indigenous Reserve and the Cabécar Nairi Awari Indigenous territory. Day Four focused on consolidating discussions and findings. A “sounding board” session was held in the morning, with the Steering Group presenting the initial findings to a group of engaged and supportive external experts comprising representatives of the governments of Costa Rica, Germany, and Norway; the Tenure Facility; and World Bank management. Thereafter, participants further identified the dialogue’s key messages and discussed the path forward. (Details of the publications presenting the outputs and outcomes of the Global Dialogue are presented in Section 5 of this report, *Communications, Outreach, and Collaboration*.)



Opening invocation on Day One of the Global Dialogue



Franz Tattenbach, Minister for Environment and Energy, Costa Rica, opening the Global Dialogue



Cécile Ndjebet, award-winning environmentalist from the African Women’s Network for Community Management of Forests (REFACOF)



Jennifer Sara, Director of the World Bank’s Climate Change Group



Global Dialogue Steering Group (left to right): Anne Samante, Kenya; Pablo Mís, Belize; Eileen Delia Mairena Cunningham, Nicaragua; and Helen Magata, Philippines (not pictured: Stanley Riamit Ole Kimaren)



Day Three field trip to the Cabécar Nairi Awari Indigenous territory



Carine Clert, World Bank Country Manager for Costa Rica and the ranger in charge of Babilla National Park, Mario Cerdas, on the Day Three field trip to the Cabécar Nairi Awari Indigenous territory



Day Four “Sounding Board” members Louise Cord, Global Director of the World Bank’s Social Sustainability and Inclusion General Practice, and Maria Elena Herrera Ugalde, REDD+ Department, National Forest Financing Fund (FONAFIFO), Costa Rica



Regional Roundtables and Workshop

In the lead-up to the Global Dialogue, EnABLE supported three regional roundtables for Africa, Asia, and Latin America and the Caribbean. These events were part of the larger World Bank initiative “Understanding and Building Indigenous Peoples’ Resilience to Climate Shocks,” led by the Social Sustainability and Inclusion (SSI) Global Unit, under which evidence has been compiled on successful strategies employed by IPs to increase their resilience to climate shocks in diverse landscapes and ecosystems. The roundtables were also timely in terms of providing valuable preparatory input into the subsequent Global Dialogue.

Africa Multistakeholder Roundtable on Indigenous Peoples’ Resilience to Climate Shocks

The Africa regional roundtable was held in Nairobi, Kenya, August 31–September 1, 2023, supported by EnABLE as part of a collaboration between the World Bank and the Mainyito Pastoralist Integrated Development Organization (MPIDO). IPs from 20 African countries came together to discuss key drivers of resilience to climate and other external shocks, along with the risks and opportunities associated with climate- and nature-related finance in the context of building resilience.

South Asia Regional Indigenous Peoples’ Resilience Roundtable

Bringing together 35 Indigenous thought leaders and experts from 14 countries, the South Asia regional roundtable was held September 28–29, 2023, in Kathmandu, Nepal. Activities under the initiative—which was led by the SSI Global Unit and jointly supported by EnABLE and the Global Partnership for Sustainable and Resilient Landscapes (PROGREEN)—are intended to inform

relevant World Bank policy dialogues and lending around drivers of resilience among IPs. This roundtable was organized by EnABLE’s task team for Nepal in collaboration with the Center for Indigenous Peoples’ Research and Development (CIPRED), an Indigenous Nepalese research organization and EnABLE partner.

Latin America and the Caribbean Multistakeholder Roundtable on Indigenous Peoples’ Resilience to Climate Shocks

The Latin America and the Caribbean regional roundtable was held October 20–21, 2023, in Panama City, Panama. The event was a collaborative effort between the World Bank and the Fund for the Development of Indigenous Peoples of Latin America and the Caribbean (FILAC). The roundtable brought together 28 Indigenous leaders from 12 countries to discuss the key drivers of resilience to climate and other external shocks.

East Asia and Pacific Regional Workshop “Recognition and Formalization of Land Rights in Forest Areas”

Through the leadership of the Philippine National Commission on Indigenous Peoples (NCIP) and the World Bank—including PROGREEN and EnABLE—the government of the Philippines convened this workshop, which was held February 5–7, 2024, in Coron, Palawan. The event brought together a diverse group of more than 100 participants, including government officials from land, forest, and IP entities; national NGOs from Indonesia, Lao PDR, and the Philippines; World Bank staff from the land and social and environmental teams; and representatives of development partners and international NGOs. The workshop provided a platform for sharing national and international knowledge and to facilitate discussions on the country action plans intended to secure land rights for IPs and LCs in forest areas.



Anne Samante and Judy Kipkenda giving the Opening and Closing Statements, respectively, at the Africa Multistakeholder Roundtable on Indigenous Peoples’ Resilience to Climate Shocks



Participants of the South Asia Regional Indigenous Peoples’ Resilience Roundtable



Participants of the Latin America and the Caribbean Multistakeholder Roundtable on Indigenous Peoples’ Resilience to Climate Shocks

Country-Level Knowledge and Capacity Building

Country-level knowledge and capacity building has been implemented (and in some cases completed) by local CSOs in 13 of EnABLE's 15 initial target countries (see Table 1). Cumulative financial allocations for country-level activities totaled US\$3.27 million as of the end of FY24. These activities focused on creating spaces for dialogue on issues related to climate finance, ERPs, and BSPs; understanding existing barriers to inclusion; identifying potential entry points for constituencies' participation; and supporting the design of country programming proposals. The EnABLE Secretariat reviewed proposals to ensure (1) consistency with EnABLE's guidelines and principles, as are outlined in its Framework Note (currently being finalized to incorporate outcomes from the Global Dialogue); (2) alignment with EnABLE's results framework; (3) adherence with EnABLE's goals for social inclusion using the methodology provided in the Framework Note; (4) inclusion of a strong gender-equity component, which is a requirement for all EnABLE-financed programming; and (5) congruity with funding allocations.

Highlights of Country-Level Knowledge and Capacity Building during Fiscal Year 2024

Country-level knowledge and capacity building was implemented and completed in Costa Rica, Ghana, Indonesia, and Lao PDR during FY23; activities are under implementation in the Republic of Congo; and activities have yet to be initiated in Chile and the Democratic Republic of Congo. Highlights of activities undertaken during FY24 in the remaining seven countries are provided in the sections that follow.

Côte d'Ivoire

Knowledge and capacity building activities in Côte d'Ivoire began in December 2023 with a train-the-trainer event for focal points from the Federation of Networks and Associations for Energy, Environment, and Sustainable Development (FEREADD). The training focused on deepening participants' understanding of gender and social inclusion and on facilitating outreach efforts, particularly targeting women to inform them of the registration process for receiving financial benefits through the BSP. Additional events were subsequently held in all five regions of the country's ERP, led by representatives of EnABLE and members of the ERP team specializing in safeguards and communications. Participants included local authorities, community representatives,

CSOs, and implementing partners, all of whom enhanced their understanding of the critical role of gender and social inclusion in the implementation of their ERP and BSP (see Appendix B, Table B1).

Building on work undertaken as part of the Côte d'Ivoire Land Policy Improvement and Implementation Project, a consultant was engaged to conduct a study on gender and land issues. Findings will be shared with the relevant stakeholders for incorporation into gender-positive actions related to land tenure via the ERP and the second phase of the World Bank's Forest Investment Program. The consultant interacted with community associations across the ERP regions to assess their effectiveness—rating them from 1 (struggling) to 3 (robust). A more detailed evaluation was subsequently conducted with 347 participants in the Nawa region, with further outreach to a total of 542 direct and 1,626 indirect beneficiaries. While progress has been made, interviews and meetings indicate that further support is needed in promoting savings to finance group projects, strengthening financial management and governance of associations, securing land tenure through contractual agreements, and establishing village savings institutions as sustainable financing mechanisms.

Dominican Republic

Following significant preparation in FY24, knowledge and capacity building activities are scheduled to begin early in FY25. World Bank teams conducted a field visit in December 2023 with the goal of establishing strong partnerships to underpin the implementation process. Key activities included progress meetings with the REDD+ Coordination Office and consultations with CSOs to promote transparency and public participation and to ensure appropriate focus on relevant climate-related issues.

EnABLE's knowledge and capacity building activities in the Dominican Republic are structured around three key components:

1. *Social Inclusion and Gender Equity.* In partnership with NGOs, such as the San Ramón Association and the Association for Sustainable Forestry Development and Restoration (ASODEFOREST), this component focuses on empowering women, youth, and people with disabilities to ensure their voices are heard in climate change forums and to highlight their roles in community development and resource management.

2. *Promotion of Gender Equity.* In collaboration with such partners as the Dominican Coffee Institute (INDOCAFE) and the Vice Ministry for Protected Areas and Biodiversity, this component includes the dissemination of a gender action plan to enhance women's participation in REDD+ activities and raise awareness of their roles in decision-making processes.
3. *Civil Society Capacity for Monitoring Transparency and Accountability.* This component aims to build civil society's capacity to monitor climate finance flows independently, thereby enhancing transparency and social accountability.

Fiji

During FY24, significant groundwork was laid to advance EnABLE's knowledge and capacity building in Fiji. Key stakeholders were identified through a mapping process to inform further action, which included an analysis of the strengths and weaknesses of local CSOs as a means of identifying potential implementing partners. The analysis included in-depth interviews with key stakeholders and a review of past efforts to engage iTaukei and other communities, and to raise their awareness and understanding of the country's ERP and BSP. Consultations were also held with key stakeholders to explore needs and strategies to promote inclusion. This work culminated in the finalization of Fiji's country programming proposal, which was presented to and endorsed by the EnABLE Steering Committee at its June meeting.

In engaging with communities, the task team for Fiji also identified some best practices, particularly in terms of engaging the country's youth in pilot activities related to the ERP. In Draubata Village, Navosa Province, for example, young people have taken it upon themselves to offer and further develop training sessions on alternative livelihood activities. Their enthusiasm has attracted the support of women's groups and the participation of their members. Youth groups represent a particularly valuable resource in rural communities for obvious reasons, but especially in terms of their capacity to assimilate new skills and information quickly, and then teach and inform others; to use modern technology and media to access information and disseminate it to their communities; and to perform labor-intensive tasks, such as those associated with farming or hunting.

Guatemala

Progress in EnABLE's knowledge and capacity building in Guatemala during FY24 focused on the creation of

the Community Forestry School by local implementing partner Utz Che', in partnership with the Institute of Agriculture, Natural Resources, and Environment (IARNA) at Rafael Landivar University. The school was designed to combine traditional Maya ecological knowledge with modern forestry and agroforestry techniques to foster learning among LCs. The school promotes the conservation of local agrobiodiversity, the use of traditional species, and the exchange of best practices through training and farmer-to-farmer learning. Utz Che' designed a curriculum to build capacity in areas of relevance to climate change, climate finance, and ERPs, among other topics. Students were also trained in the use of drones, cameras, and other technical tools to assist in monitoring deforestation in their territories. The curriculum is structured around natural resource management; the local economy and Indigenous household-level agriculture; and Indigenous rights, policies, and communications. In May 2024, the first cohort of 46 Indigenous leaders—26 of whom were female—completed the program. Approximately 60 percent of the participants were ages 18–30 years.

Madagascar

In FY24, the Madagascar task team designed an assessment focusing on an in-depth evaluation of potential low-carbon and nature-positive value chains. This initiative aims to improve livelihoods, increase income levels, and protect forests. The team also finalized the selection of consultants for the assessment, which will support the preparation of EnABLE's Madagascar country programming.

Nepal

During FY24, the EnABLE task team for Nepal made considerable progress in preparing targeted knowledge and capacity building activities. In September 2023, in collaboration with CIPRED, the World Bank organized a gathering of Indigenous thought leaders and experts from 14 of the region's countries, including India, Nepal, and Pakistan to discuss the drivers and enablers of Indigenous resilience. The event provided a platform to link Indigenous communities from the region, share their experiences of building community resilience, and provide recommendations on improving the articulation and understanding of Indigenous resilience in the context of climate and other external shocks. The event was part of the World Bank initiative "Building Back Better: Enhancing Indigenous Peoples' Resilience to Climate Change" and was supported by EnABLE the World Bank's Human

BOX 5. A Case Study of Women's Empowerment in Kanchanpur, Nepal

The Jayalaxmi Women's Community Forest User Group in Kanchanpur, Nepal, serves a low-income community of former bonded laborers who were only freed in 2000 and whose forest area is relatively small (127 hectares). The group of 269 household users entirely comprises women, most of whom lack formal education. The members attribute their confidence and personal growth to their exposure as executive members of the group. Over the years, interaction with forest offices has helped them learn how to navigate government systems and fulfill their roles as community leaders. With encouragement and technical support from the Community Forest Coordination Committee, the women established the Bijaysal Community Homestay. Executive member Basanti Rana, under whose leadership the homestay was established, has been dubbed a champion by her community for her contribution to the conservation of Bijaysal (*Pterocarpus marsupium* Roxb) trees, and her leadership and vision for the homestay, which generates additional income for local families. When the EnABLE team met with the group, it was evident that the younger generation of women was inspired by Basanti's efforts.

Source: EnABLE/World Bank.

Rights, Inclusion, and Empowerment (HRIE) Umbrella Trust Fund. The task team took the lead in organizing the event, and key country partners participated. Many of the lessons shared at the event have informed the design and preparation of programming (Box 5).

During FY24, EnABLE produced a series of audio-visual resources for different Nepalese audiences with the intention of expanding their knowledge of the importance of forests for IPs and LCs, the role of forests in reducing carbon emissions, and the concept of climate financing—particularly as it relates to the country's ERP and BSP. Details and links to these resources are provided in Section 5 of this report, *Communications, Outreach, and Collaboration*.

Viet Nam

During FY24, the EnABLE task team for Viet Nam provided technical assistance through a series of weekly meetings with the Provincial Forest Protection and Development Fund (the Provincial Fund) to advance the development of a digital tool for targeting remote ethnic minority communities and youth to promote better access to and transparency of benefit sharing arrangements. A field visit to Thua Thien Hue Province in late January 2024 allowed the task team to engage directly with the Provincial Fund and ethnic minority communities. Discussions focused on EnABLE, the community's perspectives on the ERP, and access to information. Following the visit, the team

compiled a detailed presentation documenting their interactions with the community forest management board. Collaboration with the Department of Forestry and the Viet Nam Forest Fund (the ERP implementing agency) was essential to refine implementation methods and finalize partners' terms of reference.

A prototype of the digital tool was developed, featuring forms and templates for various BSP processes. The tool facilitates the development of proposals for livelihood development projects, including recording meeting minutes, managing budgets, and creating implementation and financial reports. Innovative digital components utilizing AI were designed to facilitate access to information and participation, particularly for illiterate individuals and ethnic minority groups who are not proficient in Vietnamese. Features include voice input, automatic summarization, image-based entry of accounting information, and translations into ethnic minority languages.

In June 2024, the agreement with the Hue-based implementing agency, the Institute for Community Livelihoods (INCOLI), was finalized, and the task team, INCOLI, the Department of Agriculture and Forestry, and the Hue Provincial Fund agreed on implementation arrangements. INCOLI began engaging with and training 16 communities across 3 communes in Thua Thien Hue Province, with ongoing community engagement activities, setting the stage for ongoing progress in FY25.



3. PRIORITY AREA 2: IDENTIFYING AND STRENGTHENING OPPORTUNITIES FOR ENGAGEMENT

Priority Area 2 focuses on identifying and strengthening opportunities for EnABLE's target constituencies to participate in the preparation and implementation of ERPs and related BSPs (Box 6). This is done by supporting collaboration and partnerships among key stakeholders and by financing innovative, appropriately designed, easily replicable and scalable activities that make RBCF available to constituencies. See Table 2 and Figure 3 for an accounting of EnABLE's cumulative financial allocations for its country programming as of the end of FY24.



BOX 6. EnABLE-Supported Activities under Priority Area 2

Under its second priority, to identify and strengthen opportunities for engagement, EnABLE supports the following activities:

1. Providing grants to relevant civil society organizations and community-based organizations to undertake locally led, scalable initiatives intended to raise awareness of emission reductions programs and benefit sharing plans among target constituencies, and build their capacity to participate in, and hence benefit from, such programs; examples include providing consultation facilitation, supporting and monitoring feedback and grievance redress mechanisms, supporting land and forest resource management, promoting tenure security, providing community monitoring of program implementation, and supporting equitable transitions (note also that, based on a social assessment and gender analysis, each program determines the quota of funding allocated to activities targeting women and young people)
2. Providing technical assistance and small grants intended to amplify noncarbon benefits by improving enabling environments; diversifying skills; piloting activities on sustainable resource management, the adoption and expansion of clean energy sources, and alternative livelihoods; and building climate and livelihood resilience among affected communities and groups

Source: EnABLE/World Bank.

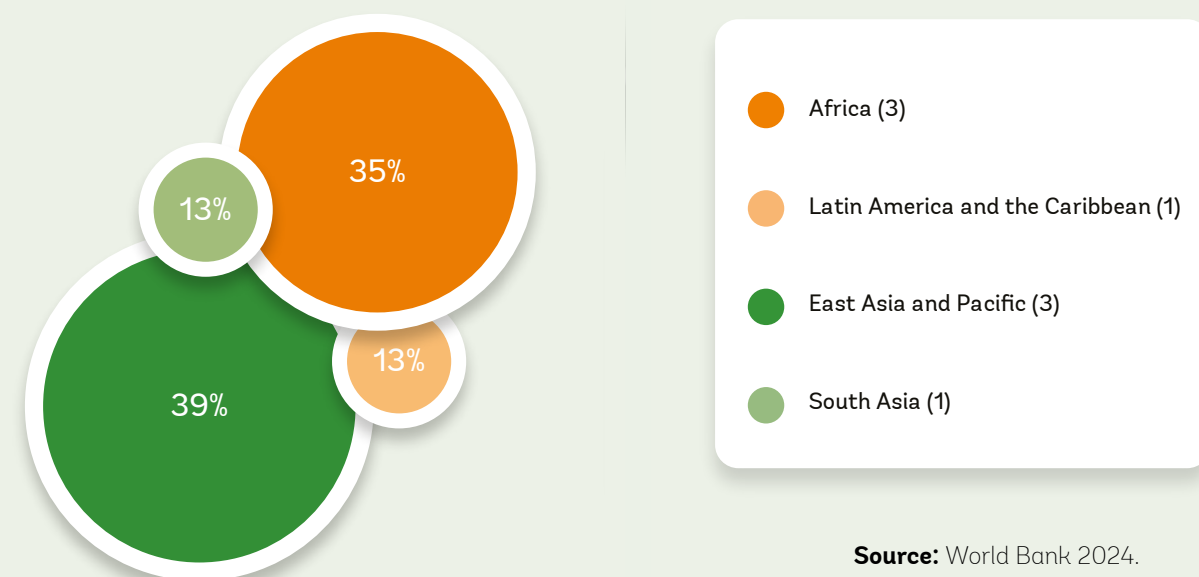
TABLE 2. Cumulative Financial Allocations for Country-Level Programming, by Region and Country, as of the End of Fiscal Year 2024

Region	Country	Allocation (US\$, millions)
Africa (3)	Ghana	4
	Madagascar	4
	Mozambique	4
Subtotal		12
Latin America and the Caribbean (1)	Costa Rica	4
Subtotal		4
East Asia and Pacific (3)	Fiji	4
	Indonesia	4
	Lao People's Democratic Republic	3
Subtotal		11
South Asia (1)	Nepal	4
Subtotal		4
Global total		31

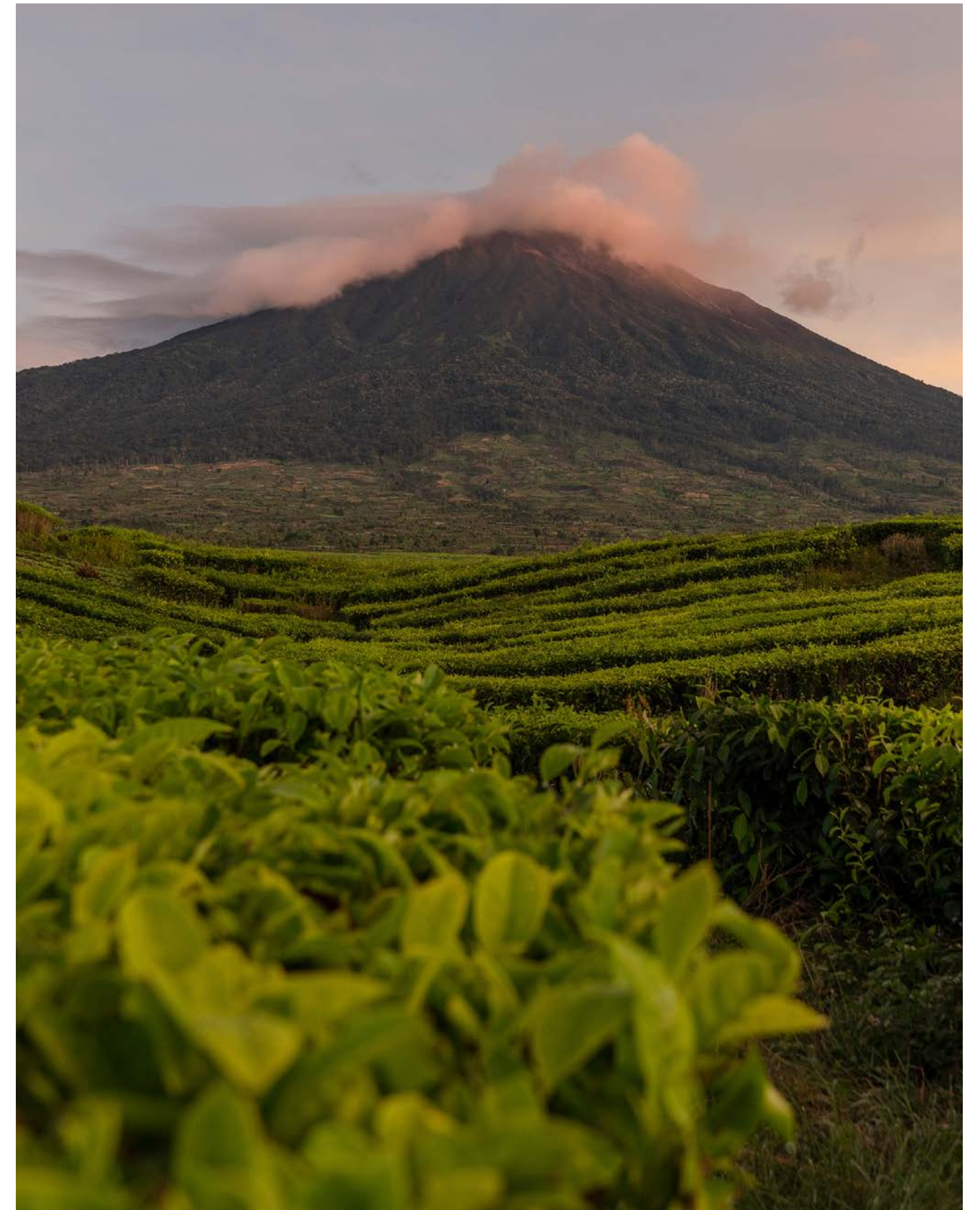
Source: World Bank 2024.

Note: Values in parentheses indicate the number of countries in each region.

FIGURE 3. Cumulative Share of Financial Allocations for Country-Level Programming, by Region, as of the End of Fiscal Year 2024



Source: World Bank 2024.



Highlights of Country Programming during Fiscal Year 2024

As discussed in Section 1, eight country programming proposals have been prepared by the task teams and endorsed by the EnABLE Steering Committee, and of those, three grant agreements have been signed between the World Bank and the respective implementing CSOs. Implementation in Ghana, Indonesia, and Mozambique began in May 2024. It is expected that grant agreements for projects in Costa Rica, Lao PDR, and Nepal will be signed in the first quarter of FY25 and that implementation will begin shortly thereafter. Country programming proposals for Fiji and Madagascar were endorsed by the EnABLE Steering Committee during its sixth meeting in June 2024. Further details are provided below.

Grant Agreements Signed

Ghana

Valued at US\$4 million and implemented by CSOs Solidaridad West Africa (SWA) and Tropenbos Ghana, EnABLE's country programming in Ghana targets 20,000 farmers who, as potential beneficiaries of the country's ERP, include women, youth, the elderly, migrant farmers, people with disabilities, and members of other vulnerable groups from 100 local communities in 6 Hotspot Intervention Areas (HIAs). These vulnerable groups are geographically hard to reach and lack access to basic social and economic infrastructure, such as roads, electricity, and water, and access to markets, communications, and extension services. They are also more adversely affected by the risks of climate change, such as droughts, heavy rains, and changes in weather patterns. EnABLE's programming particularly focuses on women and youth in these groups.

The [grant agreement was signed between the World Bank and the lead implementing agency SWA on June 5, 2024](#).

The Ghanaian government's openness to working with CSOs facilitated the development of the programming and ensured linkages and synergies with the country's ERP. This collaborative model serves as a beacon, demonstrating how governments and civil society can work together to enhance access to the potential benefits of ERPs by poor and vulnerable people, while creating a greener, and more sustainable future for Ghana. In addition, SWA and its partner Tropenbos Ghana have extensive experience working with the private sector and other CSOs, as well as experience with community-based natural resource governance structures within the ERP area. The government and HIA stakeholders identified SWA and Tropenbos Ghana as the most suitable CSOs to implement

the proposed activities due to their capacity, proximity, and reputation among community members, along with experience undertaking similar work in the past, for example, with the Ghana Dedicated Grant Mechanism in LCs.

Indonesia

EnABLE's Indonesia country programming, valued at US\$4 million, focuses on the inclusion of marginalized groups, particularly adat communities and women, within the populations of approximately 95 villages in 3 districts of the East Kalimantan ERP jurisdiction. All target villages are eligible for carbon benefits but have yet to be reached through a complete set of mobilization; outreach; or free, prior, and informed consent (FPIC) actions required to ensure that they can access and allocate benefits, especially to vulnerable groups within communities. Work during FY24 focused on preparatory activities, including establishing and training the project management team from the implementing agency, KEMITRAAN; finalizing programming plans and implementation procedures; and initiating hiring the technical team. The grant agreement was signed between the World Bank and KEMITRAAN in FY24, enabling implementation to begin early in FY25.

Mozambique

EnABLE's Mozambique country programming focuses on reinforcing the capacity of women and youth to access ERP/BSP and other RBCF benefits in five districts of Zambezia Province with the greatest social inclusion challenges, including illiteracy, food security, and vulnerability to climate change. Three of these districts are located on the coast (Pebane, Mocubela, and Maganja da Costa), and two are located inland (Alto Molocué and Mulevala). Programming is valued at US\$4 million, and interventions will directly benefit around 15,000 people (targeting 40 percent women and 45 percent youth). The program will also support organizations led by women and members of the Zambezia Integrated Development Platform.

Work during FY24 featured intense preparation. The implementing agencies were selected, resulting in a consortium of two local NGOs with proven experience working in community development and sustainable natural resource management: the Centre for Learning and Capacity Building of Civil Society (CESC) and Livaningo. A transfer agreement between the consortium and the National Fund for Sustainable Development (FNDS) was finalized, after which a workshop was organized to initiate implementation, including



Community discussion, information gathering, and awareness-raising activities targeting EnABLE constituencies in Fiji (above), Nepal (below left), Ghana (below right), and Côte d'Ivoire (bottom of page)



discussions of technical details, implementation methods, budgets, and bottlenecks. Efforts subsequently focused on aligning activities with the country's BSP to ensure the intended social inclusion outcomes for vulnerable groups, and finalizing the programming implementation manual. The CESC and Livangingo team is in place and expected to commence activities early in October 2024.

Progress in Launching EnABLE's Country Programming

Costa Rica

EnABLE's Costa Rica country programming, the allocation for which was increased to US\$4 million in FY24, focuses on increasing IPs' opportunities to benefit from the country's ERP and associated BSP, as well as other REDD+ activities. The estimated number of direct beneficiaries is 1,625. IPs and rural women play a critical role in forest management, conservation, and emission reduction activities in Costa Rica and have a strong connection with, and reliance on, forest ecosystems for their livelihoods, cultural practices, and overall wellbeing. IPs will constitute the majority of the beneficiaries, along with a pre-identified group of rural women whose livelihoods are forest-based.

The preliminary proposal was endorsed by the EnABLE Steering Committee on June 1, 2023, after which regular meetings began with the Environmental Development Bank (FUNBAM), the administrating agency; key stakeholders, such as the National Forestry Financing Fund (FONAFIFO), Mesoamerican Alliance of People and Forests (AMPB), and Bribri and Cabecar Indigenous Network (RIBCA); and other Indigenous groups. Preparation has also included a national participatory discussion process at the community level in all 24 Indigenous territories to explain the programming and gather feedback on its design, implementation, and institutional arrangements. As of the end of FY24, consultations had taken place across three of four main regions, attracting a total of 362 participants from a diverse range of organizations, including integral development associations, Indigenous territorial consultation bodies, local education councils, women's associations, environmental commissions, tourism groups, and other community organizations. In total, these groups represent a mix of local governance and educational, cultural, environmental, and entrepreneurial interests. This ongoing process will culminate in a national forum in October 2024, including participation by 20 Indigenous delegates (five from each region).

Lao People's Democratic Republic

EnABLE's Lao PDR country programming is valued at US\$3 million and focuses on engaging non-Lai-Tai women and girls in forest-dependent villages within FCPF's ERP jurisdiction in the country's north, and ethnic minority groups, such as the Mon-Khmer, Hmong-Mien, and Sino-Tibetan populations, in remote and economically disadvantaged areas of selected ERP provinces. The programming also aims to support other vulnerable community members wherever possible, including youth (ages 15 to 35) who may be integrated into alternative livelihood activities in collaboration with farmer groups, cooperatives, women's enterprise groups, and forest management collectives. Through these efforts, EnABLE will help develop village-level plans, including land-use strategies and village forestry management frameworks, as part of a comprehensive approach to inclusive community-wide engagement. In total, EnABLE will target approximately 85 villages within the larger scope of those supported by the Northern Lao Governance, Forest Landscapes, and Livelihood (GFLL) project, which is funded by FCPF through the country's ERP.

In FY24, work focused on moving through governmental and other administrative procedures necessary for the proposed implementing agency, Regional Community Forestry Training Center (RECOFTC), to take on its role, as well as responding to feedback on a draft project appraisal document. Meetings were held with RECOFTC to discuss the workplan, environmental and social frameworks, procurement and financial management, and the results framework. Meetings were also held with the Ministry of Foreign Affairs to clarify their requirements for RECOFTC's role as implementer and with the Department of Forestry to pave the way for a memorandum of understanding. RECOFTC also participated as an observer in the GFLL safeguards training sessions across two provinces.

Nepal

EnABLE's Nepal country programming, which is valued at US\$4 million, focuses on the inclusion of marginalized groups, including IPs, Dalits, Madheshi Muslims, people with disabilities, and women and girls in two of the most disadvantaged regions of the Teri Arc Landscape. Work in FY24 addressed the identification of key stakeholders and potential recipients, the selection of the implementation agency, and concept-level programming design. A Kathmandu-based regional NGO, the Asia Network for Sustainable Agriculture and Bioresources (ANSAB) was selected as the implementing agency based on consultations with both national and local Indigenous and local organizations for more than one year. ANSAB will collaborate with six other

organizations in the development of activities. The final districts identified are home to some of the most marginalized groups of IPs and Dalits in the region, all of whom face environmental vulnerabilities, such as living in flood-prone areas, having lost their lands due to their being demarcated as national parks, having been affected by conflicts with wildlife, or having been affected by historical legacies (for example, being ex-bonded laborers). During FY24, EnABLE's task team for Nepal completed the concept note for the programming, and in FY25 will move through the preparation phase in readiness for implementation.

Progress in Preparing EnABLE Country-Level Programming

Fiji

EnABLE's Fiji country programming was endorsed at its June 2024 Steering Committee meeting. The programming, valued at US\$4 million, focuses on supporting the inclusion of marginalized communities and groups in the country's ERP—especially women. In addition to national and district-level

activities, the programming will target 10–12 iTaukei and non-iTaukei communities from two provinces, each to be selected from the ERP areas of Fiji's two main islands, Vanua Levu and Viti Levu. Progress in FY25 will involve finalizing a concept note, determining the implementing CSO, and proceeding to prepare the programming.

Madagascar

EnABLE's Steering Committee also endorsed the Madagascar country programming at its most recent meeting. At a total cost of US\$4 million, the programming aims to enhance the inclusion of marginalized and geographically hard to reach communities and groups, such as women, girls, and youth. Targeted beneficiaries will number an estimated 4,500 people in 150 communities across 30 communes. As with EnABLE's Fiji country programming, work in progressing Madagascar's country programming in FY25 will involve selecting the implementing CSO, finalizing the concept note, and moving through the necessary steps to secure World Bank approval of the programming proposal and grant.



4. PRIORITY AREA 3: INTEGRATING SOCIAL INCLUSION AND GENDER EQUITY

Analysis, Methodologies, and Tools

Refining EnABLE's Framework Note

During FY24, the EnABLE Secretariat actively developed and financed methods to analyze and assess the barriers to social inclusion in ERPs. Significant time and effort were invested in revising the Framework Note that underpins EnABLE's Social Inclusion Strategy and Action Plan (SISAP) in order to incorporate insights and outcomes generated through the Global Dialogue (see Section 2, *Priority Area 1: Enhancing the Enabling Environment*). Once finalized in early FY25, this work—undertaken in collaboration with CIFOR-ICRAF—will provide invaluable methodological support to EnABLE's task teams and implementing CSO partners in designing, implementing, monitoring, and evaluating EnABLE's programming and ensuring its effectiveness in increasing the inclusion of target constituencies in ERPs.

The resulting knowledge, tools, and experience will also inform EnABLE's future programming, together with other World Bank RBCF initiatives and other nature-based solutions to climate change. Importantly, this work integrates, aligns, and advances numerous mutually beneficial development goals, including sustainably managing and preserving forest landscapes and their many resources; promoting climate resilience among the most vulnerable communities; respecting and supporting Indigenous culture, traditions, and practices; and enhancing the livelihoods, wellbeing, and security of historically marginalized communities and groups. Finally, the Framework Note and associated tools and methodologies will support the longer-term goal of replicating and scaling interventions effectively for broader impact.

Enhancing the Design and Implementation of Benefit Sharing Arrangements

EnABLE has continued its analytical work on benefit sharing arrangements, once again in collaboration with CIFOR-ICRAF. This has led to the development of a practical resource—*A Guide for Impactful Benefit Sharing*—to assist government decision-makers, local stakeholders, and World Bank task teams

to design and implement effective benefit sharing arrangements within RBCF initiatives. As part of this endeavor, two in-depth studies were conducted in Costa Rica and Viet Nam, and a forthcoming training module will further enhance these efforts by providing additional guidance and resources.

Rapid Assessment of Land Tenure Security Opportunities in the REDD+ Framework

During the 2024 World Bank Land Conference, EnABLE launched its "Rapid Assessment of Land Tenure Security Opportunities in the REDD+ Framework," which guides the preparation of EnABLE's programming in specific countries, as well as the implementation of the ERPs to amplify noncarbon benefits for IPs.

Pilot Projects

Recognizing and Rewarding Social Inclusion

EnABLE and FCPF are co-financing a pilot project to certify social outcomes in ERPs for the purpose of both recognizing and rewarding the prioritization of social inclusion and the generation of additional social and environmental benefits beyond standard requirements. This initiative responds to the growing recognition that ERPs can significantly contribute to social development, including empowering women, improving livelihoods, and enhancing biodiversity. Activities will focus on two countries (yet to be selected) that have demonstrated a strong commitment to social inclusion in implementing their ERPs. A World Bank working group has been established with the following goals:

1. To test the draft social certification indicators developed by a multidisciplinary working group
2. To establish a monitoring protocol for reporting on the social certification indicators
3. To revise the draft indicators based on the results of the pilot projects



Studies

The Indigenous Peoples' Resilience Framework

EnABLE supported the launch of a new study, *The Indigenous Peoples' Resilience Framework*, by the SSI Global Unit, which gathers experiences, evidence, and stories from diverse Indigenous cultures across 3 continents and 16 countries to gain understanding of the key drivers and enablers of IPs' remarkable resilience. The drivers identified include (1) secure access to and tenure over lands, territories, and natural resources; (2) Indigenous governance systems and institutions; and (3) Indigenous food systems, livelihoods, and economies. The study's results were used to develop a comprehensive Resilience Framework to articulate fundamental cross-cutting principles, internal drivers, and external enablers of IPs' resilience to climate

and other external shocks. The framework seeks to inform sectoral policies and programs that could directly or indirectly bolster or undermine the drivers and enablers of IPs' resilience.

The study serves as a practical guide for advancing the World Bank's newly adopted commitment to support resilient populations, as is described in Outcome Area 5 of the [World Bank Group Scorecard, Green and Blue Planet and Resilient Populations](#). At the same time, the World Bank has recently heightened its commitment to sustainability goals by adding "on a livable planet" to its mission statement, which historically only focused on poverty and inequality. This shift more closely aligns with IPs' worldviews and values. Finally, the framework contributes a unique global public good to a development community that is increasingly recognizing IPs as critical partners in conserving the world's ecosystems and addressing climate challenges.



Case Studies on Good Practices for Social Inclusion in REDD+

During FY24, EnABLE continued developing a series of case studies for the purpose of disseminating information, lessons, and experiences on what has worked and not worked in efforts to promote social inclusion in REDD+ and other RBCF initiatives. Development of the series was ongoing as of the end of FY24.

Self-Paced e-Learning Modules

Building on previous training and courses, the EnABLE Secretariat launched two self-paced e-learning modules designed to support CSOs and IPs' organizations in learning

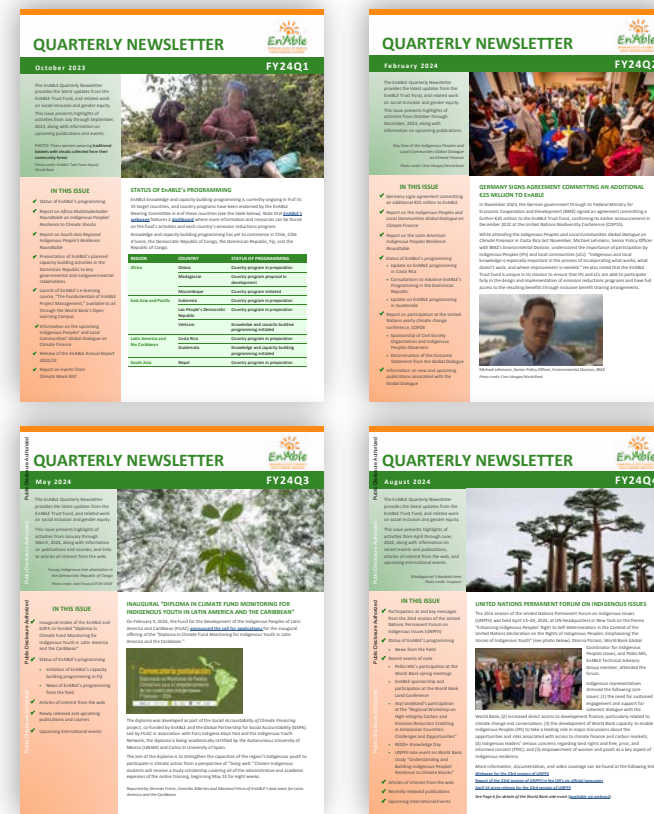
the procedures, policies, and fundamentals of managing grant resources from EnABLE. The courses, also available in French and Spanish, are accessible to all via the World Bank's Open Learning Campus. The first module, "[Monitoring and Evaluation](#)" ([French](#), [Spanish](#)), explains how monitoring and evaluation (M&E) processes are developed for and applied to EnABLE's operations. The second module, "[Social Inclusion in REDD+](#)" ([French](#), [Spanish](#)), details the main challenges and opportunities disadvantaged and marginalized communities face in participating in ERPs related to REDD+, and explores options to enhance social inclusion in REDD+ programs. Two more courses on designing impactful benefit sharing and on community-led measurement, reporting, and verification (MRV) are being jointly developed with FCPF to be launched in FY25.

5. COMMUNICATIONS, OUTREACH, AND COLLABORATION

Communications Activities

EnABLE Newsletters

The EnABLE Secretariat continued to produce quarterly newsletters in English, French, and Spanish during FY24 as a means of communicating programming updates and other relevant information with the fund's stakeholders.



Publications

1. In October, 2023, EnABLE published its second annual report detailing the fund's progress across its three areas of priority focus during FY23. The annual report was published in [English](#), [French](#), and [Spanish](#).
2. In December 2023, to facilitate dissemination of the results of the Global Dialogue Enabling Indigenous Peoples and Local Communities to Engage in and Benefit from Results-Based Climate Finance, the EnABLE Secretariat produced the [Outcome Statement](#), which is also available in [French](#) and [Spanish](#).
3. In May 2024, EnABLE released the full [Summary Report of the Global Dialogue](#), which includes the Outcome Statement, and is also available in [French](#) and [Spanish](#), along with the related [Supplementary Documentation](#).



Featured Stories

1. On December 18, 2023, the World Bank published the blog ["Indigenous Peoples and local communities hold the key to successful high-integrity carbon markets,"](#) by Pablo Mís, Jennifer J. Sara, and Asyl Undeland. The article publicized strategic outcomes from the Global Dialogue, together with the World Bank's commitment to ensuring that IPs' and LCs' rights and priorities are recognized, represented, and respected in carbon markets.

Outreach Activities

Knowledge Products

1. As previously discussed, in the first quarter of FY24, the EnABLE Secretariat launched two self-paced e-learning modules designed to support CSOs and IP organizations in learning the procedures, policies, and fundamentals of managing grant resources from the EnABLE Trust Fund. The courses, also available in French and Spanish, are accessible to all via the World Bank's Open Learning Campus. The first module, ["Monitoring and Evaluation" \(French, Spanish\)](#), explains how M&E processes are developed for and applied to EnABLE's operations. The second module, ["Social Inclusion in REDD+" \(French, Spanish\)](#), details the main challenges and opportunities disadvantaged and marginalized communities face in participating in ERPs related to REDD+, and explores options to enhance social inclusion in REDD+ programs.
2. As was noted earlier in this report, EnABLE produced two audio-visual resources to expand Nepalese audiences' knowledge of the importance of forests for IPs and LCs, the role of forests in reducing carbon emissions, and the concept of climate financing, particularly as it relates to the country's ERP and BSP. The first video, ["Community Voices in Sustainable Forest Management in Nepal"](#), highlights three success stories in the country's Terai region, where communities have been able to enhance their livelihood opportunities and benefit from environmental services through sustainable management of forests. The second video, ["How the Forests Provide Livelihood and Environmental Services for the Indigenous Chepang Communities"](#), showcases how the forests have provided necessary livelihood and environmental services for the Chepang communities—one of 59 recognized Indigenous groups in Nepal—for generations.

Events

1. At the 2024 World Bank Land Conference, held May 13–17 in Washington, DC, EnABLE organized the panel discussion "Rights from the Start: Why Community Tenure Matters to Mitigation Outcomes," which focused on challenges and opportunities surrounding land tenure security to advance climate action in various contexts, including REDD+ projects, collective forest rights, and gender equality.

Meetings

1. Climate Week—the largest yearly climate event of its kind, encompassing over 500 in-person and online events and activities across New York City—was held September 18–20, 2023. Asyl Undeland, EnABLE's Trust Fund Manager, attended and participated in several events:

- » Forest and Climate Leaders' Partnership on Rights, Participation, and Benefits for Indigenous Peoples and Local Communities in Forest Climate Finance. This meeting brought together leaders from governments, IPs' and LCs' organizations, philanthropic and international organizations, and the private sector to discuss opportunities created by emerging mechanisms for jurisdictional approaches to forest finance. Panelists from Costa Rica and Ghana presented their lessons learned from working with World Bank programs to enhance IP and LC participation in RBCF.
 - » The Path to Scale Annual Meeting. The Path to Scale is an informal network of stakeholders focused on priorities and strategies to scale up funding and other enabling factors to secure land and resource rights, support conservation, and promote sustainable livelihoods for IPs, LCs, and Afro-descendant Peoples to meet the 2030 global climate and biodiversity targets. Participants assessed changes in the funding ecosystem, reviewed work products, shared key lessons learned, and synergized messaging around Climate Week and COP28.
 - » Emergent and Environmental Defense Fund and LEAF Coalition Discussion and Reception. Stakeholders from the public and private sectors, forest nations, IP and LC groups, and civil society came together to focus on scaling climate finance to meet the challenge of halting tropical deforestation. Discussions emphasized the barrier of complex and time-consuming technical agreements and procedures in light of organizations' limited staff and resources. This, once again, highlights the need for the kinds of interventions EnABLE programming is supporting within Indigenous and local communities.
 - » From Communities to Partnerships: Catalyzing Investments to Scale Natural Climate Solutions. This event, organized by The Nature Conservancy, brought together stakeholders in initiatives related to nature-based solutions to climate change mitigation.
2. In November 2023, the EnABLE Steering Committee met at the conclusion of the Global Dialogue in Costa Rica to reflect on and discuss the outcomes of the event, and to review progress in implementing EnABLE's knowledge and capacity building programming.



3. At the United Nations yearly climate change conference (COP28), held in Dubai, United Arab Emirates, November 30–December 12, 2023, Global Dialogue Steering Group members Anne Samante (MPIDO, Kenya) and Pablo Mís (member of the Maya Q'eqchi community of Laguna, Belize) participated in the World Bank panel "Trustworthy and Transparent Voluntary Carbon Markets: A Game Changer for Developing Countries," [the replay of which is available online](#).
4. The East Asia and Pacific regional workshop "Recognition and Formalization of Land Rights in Forest Areas," was held February 5–7, 2024, in Coron, Palawan. The government of the Philippines convened the event with the assistance of the Philippine National Commission on Indigenous Peoples (NCIP) and the World Bank—including PROGREEN and EnABLE. More than 100 participants attended, including government officials from land, forest, and IP agencies; national NGOs from Lao PDR, the Philippines, and Indonesia; World Bank staff from the land and social and environmental teams; and representatives of development partners and international NGOs.
5. A technical meeting of the EnABLE Steering Committee was held virtually on March 20, 2024, at which time country-level task team leaders provided updates on the status of EnABLE's country programming.
6. The 23rd session of the United Nations Permanent Forum on Indigenous Issues (UNPFII) was held April 15–26, 2024, at UN Headquarters in New York on the theme "Enhancing Indigenous Peoples' Right to Self-Determination in the Context of the

- United Nations Declaration on the Rights of Indigenous Peoples: Emphasizing the Voices of Indigenous Youth." Dianna Pizzaro, World Bank Global Coordinator for Indigenous Peoples Issues, and Pablo Mís attended the forum.
7. On April 16, Pablo Mís participated in discussions with key stakeholders on carbon markets as part of the World Bank's Spring Meetings, which were held April 15–20, 2024, in Washington, D.C. Underscoring the critical contribution of IPs and LCs to ensuring that carbon markets deliver tangible social and development benefits alongside environmental gains, Pablo advocated enhanced direct community access and benefit-sharing, robust safeguards, and increased investments in Indigenous territories to support conservation and climate resilience.
 8. Asyl Undeland participated at the World Bank and Inter-American Development Bank "Regional Workshop on High-Integrity Carbon and Emission Reduction Crediting in Amazonian Countries: Challenges and Opportunities," held May 29–31 in Bogotá, Colombia. Asyl participated in the session "How to ensure social integrity and social inclusion in emission reductions programs (FPIC, benefit sharing, and meaningful engagement of IPs)."
 9. The sixth meeting of the EnABLE Steering Committee was held June 13–14, 2024, in Bonn, Germany, at which time progress and achievements made during FY24 were discussed, the workplan and budget for FY25 were presented, and country programming proposals for Fiji and Madagascar were endorsed.

Sponsorships

1. EnABLE and FCPF co-sponsored the participation of several CSO observers and two members of the Global Dialogue's Steering Group at COP28 to let their voices be heard at the international climate conference:
 - Sergio Guzman of the Association of Forest Communities of Petén (ACOFOP), Guatemala
 - Dil Raj Khanal of the Federation of Community Forest Users of Nepal (FECOFUN)
 - Joseph Ole Simel of the Mainyoto Pastoralists Integrated Development Organization (MPIDO), Kenya
 - Anne Samante of MPIDO, Kenya, and Global Dialogue Steering Group member

- Pablo Mís, member of the Maya Q'eqchi community of Laguna, Belize, and Global Dialogue Steering Group member
2. EnABLE sponsored five Indigenous experts to participate at the 2024 World Bank Land Conference, held May 13–17 in Washington, D.C.

Promotions

1. To facilitate dissemination of the results of the Indigenous Peoples and Local Communities Global Dialogue on Climate Finance, EnABLE produced a promotional flyer and postcard for distribution at COP28. The materials provided a QR code for easy online access to the Global Dialogue's Outcome Statement.



From left to right: Hannes Hotz (Deutsche Gesellschaft für Internationale Zusammenarbeit [GIZ] GmbH), Helen Magata (EnABLE Technical Advisory Group member), Asyl Undeland (EnABLE Fund Manager), Michael Lehmann (German Federal Ministry for Economic Cooperation and Development [BMZ]), Celina Pentamah (EnABLE Secretariat), Chie Ingvoldstad (EnABLE Secretariat), Ole Gramann (GIZ), and Sylvia Reinhardt (GIZ)



Collaborative Activities

1. The "Africa Multistakeholder Roundtable on Indigenous Peoples' Resilience to Climate Shocks" was held in Nairobi, Kenya, August 31–September 1, 2023. The EnABLE-supported event was a collaboration between the World Bank and MPIDO.
2. Supported by EnABLE and PROGREEN, the "South Asia Regional Indigenous Peoples' Resilience Roundtable" was held September 28–29, 2023, in Kathmandu, Nepal.
3. The "Latin America and the Caribbean Multistakeholder Roundtable on Indigenous Peoples' Resilience to Climate Shocks" was held in Panama City, Panama, October 20–21, 2023. The event—supported by EnABLE, PROGREEN, and the HRIE Umbrella Trust Fund—was a collaboration between the World Bank and the Fund for the Development of Indigenous Peoples of Latin America and the Caribbean (FILAC).
4. The Global Dialogue Enabling Indigenous Peoples and Local Communities to Engage in and Benefit from Results-Based Climate Finance was held in San José, Costa Rica, November 6–9, 2023. The event was jointly organized by EnABLE and FCPF, together with the German Federal Ministry for Economic Cooperation and Development (BMZ) through the Deutsche Gesellschaft für Internationale Zusammenarbeit GmbH (GIZ). The event was hosted by the government of Costa Rica.
5. In collaboration with the UN-REDD Programme, the World Bank—including EnABLE, FCPF, and ISFL—organized a [REDD+ Knowledge Day](#), held June 27, 2024, in Oslo, Norway. The event attracted more than 140 participants representing governments, IP organizations, CSOs, NGOs, academia, donors, the World Bank, and the United Nations. Asyl Undeland presented the concept of benefit sharing in REDD+, and Joseph Ole Simel, Executive Director of MPIDO, presented Indigenous perspectives on benefit sharing, as well as outcomes from the Global Dialogue.

6. MONITORING AND EVALUATION

Context

EnABLE's results framework aligns with the World Bank's management structures and other portfolios, but is flexible enough to apply to diverse settings, countries, programs, institutions, and implementing partners. It was determined that baselines and targets would be set on a rolling basis for each country's programming. As such, the fund's overall targets simply reflect the sum of the individual country, regional, and global targets. EnABLE's M&E comprises a consolidated results framework for its overall global programming, together with individual frameworks for its country-level programming. The framework includes four core indicators that all country task teams are required to track, as well as additional indicators of relevance to the specific activities endorsed for each country. This builds in sufficient flexibility to determine appropriate targets for each country's unique programming while ensuring overall programmatic alignment across the fund's portfolio (Box 7). Since the first financial disbursements under the fund only began in FY22, that year forms the baseline for M&E.

Monitoring, Reporting, and Methodolog

At the global level, the EnABLE Secretariat monitors funding allocations to ensure timeliness and alignment with approved activities. Using the results framework, the Secretariat also monitors the submission of progress and status reports for each grant to ensure that results are achieved as agreed and intended. At the programming level, each task team leader prepares a twice-yearly status report for submission to the Secretariat. Information from these reports is then consolidated and incorporated into EnABLE's quarterly newsletters and annual reports. Regular reporting of progress and results is also channeled to donors through the Secretariat at Steering Committee and technical meetings, as well as via the annual report. The EnABLE Secretariat also conducts monthly meetings to facilitate task teams in providing updates and sharing experiences and results across countries, regions, and globally. Finally, EnABLE's task teams share stories for inclusion in EnABLE's quarterly newsletter, which is produced by the Secretariat.

BOX 7. EnABLE Positively Influences Inclusion Criteria in Mozambique's Benefit Sharing Plan

In FY24, EnABLE supported the Mozambique government in developing inclusion criteria for its benefit sharing plan. EnABLE's engagement led to a revision of the criteria for the inclusion of women and youth, not just in the five districts covered by EnABLE, but across all the districts covered by the country's benefit sharing plan—which is a significant achievement. The revised targets now require that women constitute 40 percent of beneficiaries, and that youth constitute 45 percent. EnABLE programming activities will support community-based organizations (CBOs) in reaching those targets, with approximately 3,650 direct beneficiaries, including members of existing CBOs and of newly formed CBOs intended to facilitate constituencies' engagement in sustainable livelihoods, ultimately leading to emission reductions. Other direct beneficiaries include members of the Zambezia Multistakeholder Platform, which became inactive two years ago when funding from a separate program ceased. With EnABLE's support, the platform will be revived to play an active role in promoting social inclusion within the ERP.

Source: EnABLE/World Bank.

EnABLE and CIFOR-ICRAF collaborated to develop the previously mentioned Framework Note, which underpins the fund's SISAP and related social inclusion targeting methodology. Tightly linked to EnABLE's results framework, this methodology provides practitioners with guidance on (1) how to identify and analyze constraints to social inclusion in REDD+ operations, (2) how to design strategies and actions to address the constraints marginalized and disadvantaged groups face in accessing benefit sharing opportunities, and (3) how to select indicators and approaches to monitor progress in improving social inclusion and benefit sharing. The targeting methodology represents an invaluable tool to facilitate monitoring and reporting on country programming.

Evaluation

EnABLE-funded programming is subject to the World Bank's standard evaluation process by its Independent Evaluation Group (IEG) in accordance with relevant policies and procedures. In FY25, the EnABLE Secretariat will launch a comprehensive monitoring, evaluation, and learning (MEL) system. The SISAP Framework Note also provides a foundation for establishing a robust MEL system based on EnABLE's results framework. These systems will support implementing CSOs and strengthen their capacities to undertake comprehensive evaluations of their activities and to organize learning events focused on sharing experiences, lessons learned, and reflections.



7. CHALLENGES AND OPPORTUNITIES

The EnABLE Secretariat and task teams continued to face challenges in pursuing EnABLE goals during FY24, many of which were similar to those encountered in FY23. These challenges were not unexpected, but they nevertheless affected the overall efficiency and effectiveness of EnABLE's operations. Challenges also inspire opportunities, however, and two challenges—lack of civil society capacity and government concern about endorsing civil society organizations—were overcome through the design of innovative strategies, as is described below.

Delays in Emission Reductions Program and Benefit Sharing Plan Operations

The close alignment of EnABLE programming with the countries' ERPs means that delays in their processes slow, and even halt, EnABLE's progress. Many countries struggle with the technical and bureaucratic requirements of researching, designing, and implementing appropriately targeted programs. Delays in initiating the ERPs and BSPs in the Democratic Republic of Congo and Republic of Congo, for example, have had flow-on effects in delaying the start of EnABLE's

knowledge and capacity building activities in these countries. In Chile, the initiation of EnABLE's activities has been delayed by an agreed technical correction to the country's carbon accounting due to a severe and prolonged drought.

Lack of Local Civil Society Capacity to Manage Large-Scale Investments

A significant barrier in many target countries is the limited capacity of local CSOs to manage activities of the complexity and scale of EnABLE's programming. This gap has made the task of identifying qualified local partners difficult. Task teams have adopted innovative strategies to overcome this limitation, however. In some cases, a larger, more experienced CSO serves as the lead implementing partner, able to assign responsibilities and funding to smaller Indigenous entities, as has occurred in Costa Rica and Indonesia. In other countries, such as Ghana and Mozambique, task teams explored opportunities to form consortiums of local CSOs to pool resources and manage activities collectively. These strategies are intended to have positive impacts on local capacity while ensuring that EnABLE's programming is implemented effectively.



Government Concern about Endorsing Civil Society Organizations

A recurring issue in some countries is government hesitation to endorse CSOs as implementers of EnABLE's programming. Understandably, governments are often concerned about granting nongovernmental actors autonomy over projects, particularly when they involve large-scale resources or high visibility. The EnABLE Secretariat and task teams engaged in extensive dialogue with government officials to allay their concerns by familiarizing key stakeholders with the fund's principles and priorities, highlighting the potential for collaboration, and underscoring the importance of CSO involvement. This issue has also fed into the design of creative arrangements with CSOs, as outlined in the previous section. Progress has been mixed and, as with many of EnABLE's challenges, requires patience, diplomacy, and extended timeframes.

Unpredictable Environments

Changing circumstances and priorities are an ever-present, but nonetheless obstructive, factor in implementing development initiatives. In June 2023, for example, Guatemala held general elections, which were marked by

significant uncertainty. Indigenous authorities were involved in the transition, mobilizing large-scale actions, which understandably diverted their attention from their usual activities and priorities. As a result, it became necessary to adapt methodological commitments and activities to fit within this shifting community context.

Adverse Weather Conditions

Given that the focus of EnABLE's work is predominantly remote natural environments, extreme weather conditions present challenges to the implementation of intended programming—while also underscoring the dire need for community-level climate resilience. During the last quarter of FY24, Indigenous territories in Guatemala faced severe weather conditions, significantly extending the dry season and delaying the country's usual calendar of agricultural and forest-related activities. Forest fires presented communities with enormous challenges, exacerbated by the limited capacity of government assistance. Maya communities, including community forest guards, dedicated much of their time to extinguishing the fires. Similarly, Chile experienced a severe drought, which decreased the productivity of the natural forest. As mentioned above, this required a technical correction to the country's carbon accounting, which in turn delayed progress in EnABLE's programming.



Appendix A. Contributions and Expenses

TABLE A1. Total Contributions to EnABLE

Donor	Total Pledged Contributions	Cumulative Contributions Received to the End of FY24	Outstanding
US\$, millions			
Germany	54.98	38.92	16.06
Total	54.98	38.92	16.06

Source: World Bank 2024.

Note: Total pledged contributions and outstanding balance are subject to exchange rate fluctuations.

TABLE A2. Cumulative Expenses by EnABLE

Expense	Cumulative Total to the End of FY24
US\$, millions	
Global knowledge and capacity building	0.90
Country-level knowledge and capacity building	2.12
Country programming supervision	0.16
Secretariat administration, communications, and methodology	1.36
Trust fund fees	0.40
Total	4.95

Source: World Bank 2024.

Note: The cumulative total indicates expenses for the life of the fund up until June 30, 2024.

Appendix B. Consultations and Participating Organizations

TABLE B1. Summary of Consultations/Trainings Conducted during Fiscal Year 2024

Country	Activity	Participating Organizations/Groups
Costa Rica	Consultations with prospective administrative agencies	<ul style="list-style-type: none"> Environmental Development Bank (FUNBAM) Prospective IPO and CSO implementing partners
	Meetings to discuss potential coordination and synergies	<ul style="list-style-type: none"> Deutsche Gesellschaft für Internationale Zusammenarbeit (GIZ) GmbH Estado de la Nación
	Meetings to ensure alignment of activities with government policy	<ul style="list-style-type: none"> Ministry of Environment and Energy (MINAE) National Forestry Financing Fund (FONAFIFO) REDD+ Secretariat Costa Rican Institute for Rural Development (INDER)
	A national participatory and discussion process	<ul style="list-style-type: none"> Local CSOs and Indigenous organizations in the following territories: <ul style="list-style-type: none"> » Central-North region territories of Maleku, Matambú, Zapatón, and Quitirrisí, totaling of 75 participants » Ngobe region territories of Comte Burica, Osa, Altos San Antonio, Abrojo Montezuma, and Coto Brus, totaling 116 participants » Buenos Aires–Perez Zeledon region territories of Salitre, Cabagra, Ujarrás, Rey Curré, Boruca, Térraba, and China Kichá, totaling 171 participants
Côte d'Ivoire	Comprehensive train-the-trainer workshop to deepen understanding of gender and social inclusion and to facilitate outreach, particularly to inform women of the process of registering to receive financial benefits	<ul style="list-style-type: none"> Representatives from the Federation of Networks and Associations for Energy, Environment, and Sustainable Development (FEREADD) across the five regions involved in the ERP
	Train-the-trainer workshops to enhance participants' understanding of the critical role of social inclusion and gender in the ERP and in implementing the BSP	<ul style="list-style-type: none"> Representatives of local authorities, community organizations, CSOs, local administrative services, and implementing agencies, including participants from the administrative capitals of each ERP region—Guiglo, Duékoué, Sassandra, Soubré, and San Pedro (120 individuals in total nationwide)

Country	Activity	Participating Organizations/Groups
	A one-day event for International Women's Day, comprising focus groups, training, and sessions for engaging in the ERP and BSP content centered on women's leadership, the challenges women face, and lessons learned from successful women in the agroforestry sector	<ul style="list-style-type: none"> • Women in leadership in the agroforestry sector
	A three-day event in Soubré, in the Nawa region, to disseminate information about the BSP, the registration process, and broader forestry management programs, and to hold focus groups on key issues	<ul style="list-style-type: none"> • Local administration officials, project implementation partners, CSOs, women's associations, a representative of individuals with disabilities, and community representatives from all five regions (approximately 120 stakeholders in total)
	A two-day field visit	<ul style="list-style-type: none"> • Women working in agroforestry and nurseries • CSOs working in agroforestry
Dominican Republic	Meetings to ensure alignment of activities with government policy	<ul style="list-style-type: none"> • Ministry of Environment and Natural Resources
	Meetings to discuss potential coordination and synergies	<ul style="list-style-type: none"> • Association for Sustainable Forestry Development and Restoration (ASODEFOREST) • San Ramon Association • Solidarity Foundation • Citizen's Participation Foundation • Climate Change and Resilience Observatory, Santa Domingo Institute of Technology (INTEC) • Sur Futuro Foundation • Dominican Environmental Consortium • Latin American Faculty of Social Sciences (FLACSO)

Country	Activity	Participating Organizations/Groups
Fiji	Consultations with stakeholders on the design of EnABLE's Fiji Country Program and potential program implementers	<ul style="list-style-type: none"> • Government agencies (22 women and 26 men) <ul style="list-style-type: none"> » Ministry of iTaukei Affairs, Culture Heritage and Art (MTACHA) » Ministry of Fisheries and Forestry (MFF) » Ministry of Environment and Climate Change » Ministry of Rural Development and Maritime Affairs » Ministry of Women, Children, and Social Protection • Nongovernmental and development organizations (13 women and 8 men) <ul style="list-style-type: none"> » Nature Fiji-Maregetiviti » Fiji Council of Social Services (FCOSS) » Live and Learn Environmental Education (LLEE) » Conservation International » Soqosoqo Vakamarama iTaukei • Additional consultations with community members (8 women and 9 men)
	Meeting to discuss potential coordination and synergies	<ul style="list-style-type: none"> • German Agency for International Cooperation (GIZ), Fiji office • Australian Department of Foreign Affairs and Trade (DFAT), Fiji Office
	Meeting to ensure alignment of potential activities with government policies	<ul style="list-style-type: none"> • Ministry of iTaukei Affairs, Culture Heritage and Art (MTACHA) • Ministry of Fisheries and Forestry (MFF) • Ministry of Environment and Climate Change • Ministry of Rural Development and Maritime Affairs • Ministry of Women, Children and Social Protection • Ministry of Lands • iTaukei Land Trust Board (TLTB)
	Consultations with local communities, women, as well as youth and the elderly	<ul style="list-style-type: none"> • Focus group discussions with men's and women's groups in Draubuta Village, Navosa Province, to improve understanding of their experience engaging with ERP processes and to further assess needs for capacity support (further review of existing reports and interviews with key stakeholders was also undertaken to enhance understanding of key barriers for ERP participation, particularly for non-iTaukei communities, women, youth, and the elderly)
Ghana	Consultations with stakeholder in the process of preparing the EnABLE Country Program	<ul style="list-style-type: none"> • National REDD+ Secretariat • Private sector entities • CSOs and NGOs • Juabeso-Bia Hotspot Intervention Area • Sefwi-Wiawso /Bibiani Hotspot Intervention Area • Kakum Hotspot Intervention Area • Landscape Governance Management Board

Country	Activity	Participating Organizations/Groups
Guatemala	Capacity building for local Maya communities	<ul style="list-style-type: none"> • Utz Che' (Community Forest Association of Guatemala), a network of CBOs representing more than 200,000 people, 90 percent of whom are Indigenous • Institute of Agriculture, Natural Resources and Environment (IARNA), University Rafael Landivar • Representatives from the departments of Huehuetenango, Quiché, and Totonicapán
	Capacity building for social inclusion and monitoring of the flow of climate financing	<ul style="list-style-type: none"> • Local committees for social auditing organizations, and local organizations from the three departments of intervention <ul style="list-style-type: none"> » Asociación Parcialidad Indígena Chuamagán » Asociación Parcialidad Quiacqui » Asociación Parcialidad Baquix » Asociación Parcialidad Chaclán » Asociación Parcialidad Vásquez » Asociación Parcialidad Caxaj » Asociación Parcialidad Ajpacaja » Asociación Parcialidad de Vicentes » Asociación de Campesinos Forestales » Asociación de Mujeres Eulalenses para el Desarrollo Pixan Konob' » Asociación Agropecuaria y Artesanal para el Desarrollo La Guadalupana » Asociación Tikonel » Asociación para el Desarrollo San Ildefonso Ixtahuacán » Asociación de Organizaciones de Los Cuchumatanes » Empresa Campesina Asociativa La Bendición » Asociación de Desarrollo Integral de la Gloria » Cooperativa San José El Asintal » Asociación de Comunidad Campesina de Copropietarios y Herederos de la Finca
	Consultations with IPs participating in environmental and climate change policy	<ul style="list-style-type: none"> • Mesoamerican Alliance of People and Forests (AMBP) • National Forestry Financing Fund of Costa Rica (FONAFIFO) • Bribri and Cabecar Indigenous Network (RIBCA) • Association for the Integral Development of the Cabécar Indigenous Territory (ADITICA) • Kabata Konana Cabecar (women's association) • National Forest Institute (INAB)
Indonesia	Training on procurement and systematic tracking of exchanges in procurement	<ul style="list-style-type: none"> • Implementing agency (KEMITRAAN) staff
	Safeguards workshop for EnABLE	<ul style="list-style-type: none"> • KEMITRAAN staff

Country	Activity	Participating Organizations/Groups
	Workshop on stakeholder engagement plan	<ul style="list-style-type: none"> • KEMITRAAN staff
	Meeting with East Kalimantan Provincial Government on preparing the program document	<ul style="list-style-type: none"> • Officials from the Economic Bureau of East Kalimantan Province's project management unit • FCPF's coordinator for East Kalimantan
	Meeting with East Kalimantan Provincial Government on additional district for EnABLE	<ul style="list-style-type: none"> • Officials from the Economic Bureau of East Kalimantan Province
	Workshop on EnABLE Country Program operating manual	<ul style="list-style-type: none"> • KEMITRAAN staff
	Further training on Procurement and Systematic Tracking of Exchanges in Procurement	<ul style="list-style-type: none"> • KEMITRAAN staff
	Mini workshop on feedback and grievance redress mechanisms	<ul style="list-style-type: none"> • KEMITRAAN staff
	Mini workshop on social auditing	<ul style="list-style-type: none"> • KEMITRAAN staff
Lao PDR	Consultation to discuss a national level memorandum of understanding	<ul style="list-style-type: none"> • Government officials at international, national, provincial, and district levels • Departments of agriculture, forestry, and national resource management and environment
	Consultation to discuss memorandums of understanding with Luang Prabang Province, Oudomxay Province, and Xayaboury Province	<ul style="list-style-type: none"> • REDD+ representatives • National Commission for the Advancement of Women • Representatives from Lao Women's Union • Representatives from Lao front for development • Regional Community Forestry Training Center (RECOFTC) • Village-level forestry management
Mozambique	Workshop to discuss technical details, implementation arrangements, budgets, and bottlenecks in relation to EnABLE's Mozambique Country Program	<ul style="list-style-type: none"> • Program implementing agencies the Centre for Learning and Capacity Building of Civil Society and Livaningo • National Fund for Sustainable Development (FNDS)

Country	Activity	Participating Organizations/Groups
Nepal	Consultations on program design and implementation	<ul style="list-style-type: none"> Ministry of Forests and Environment, REDD Implementation Center National Foundation for the Development of Indigenous Nationalities (NFDIN) Division Forest Offices (Kailali, Kanchanpur, Chitwan, and Nawalpur) Federation of Community Forest User Groups of Nepal (FECOFUN) Nepal Federation of Indigenous Nationalities (NEFIN) National Indigenous Women's Federation (NIWF) Rastriya Dalit Network (RDN) Dalit Alliance for Natural Resources (DANAR) Tharu Welfare Society Association of Collaborative Forest Users (ACOFUN)
	Consultations to assess institutional gaps and determine vulnerability criteria for EnABLE Country Program interventions	<ul style="list-style-type: none"> Approximately 175 members of forest user groups (community, buffer zone, and so on) and local chapters of representative organizations (NEFIN, FECOFUN, and RDN)
Viet Nam	Weekly technical assistance meetings to advance the development of a digital tool for targeting ethnic minority communities and youth	<ul style="list-style-type: none"> Provincial Forest Protection and Development Fund (the Provincial Fund)
	Meetings to discuss arrangements for INCOLI to implement training on the use of the prototype of the digital tool in 16 communities across 3 communes in Thua Thien Hue Province	<ul style="list-style-type: none"> Institute for Community Livelihoods (INCOLI) Department of Agriculture and Forestry
	Discussion of gender strategies and community engagement efforts within forestry programs to support the alignment of EnABLE's objectives with broader forestry initiatives in the region	<ul style="list-style-type: none"> Deutsche Gesellschaft für Internationale Zusammenarbeit (GIZ) GmbH
	An ERP implementation support mission to advance EnABLE's development agenda	<ul style="list-style-type: none"> A field visit to one of the target provinces to continue discussions and information sharing



Photo Credits

Cover	Max Ravier/Pexels
Page 6	FCPF/World Bank
Page 12	FCPF/World Bank
Pages 14 and 15	FCPF/World Bank
Pages 16 and 17	Chris Morgan/World Bank
Page 18	SCCFM/World Bank
Page 19	Africa Multistakeholder Roundtable: MPIDO
	South Asia Regional Roundtable: Cecelia Rana/World Bank
	Latin America and Caribbean Multistakeholder Roundtable: Conte Fotografia/World Bank
Page 23	FCPF/World Bank
Page 25	FCPF/World Bank
Page 27	FCPF/World Bank
Page 29	EnABLE country task teams/World Bank
Page 31	FCPF/World Bank
Page 32	FCPF/World Bank
Pages 34 and 35	FCPF/World Bank
Page 40	EnABLE Secretariat/World Bank
Page 41	Chris Morgan/World Bank
Page 44	EnABLE task team for Côte d'Ivoire/World Bank
Page 46	FCPF/World Bank
All other photos	Pexels, Shutterstock, Depositphotos, Unsplash



The World Bank
1818 H Street, NW
Washington, DC 20433, USA
www.worldbank.org

