

Unlocking women's potential in the Sahel with Adaptive Social Protection

A roadmap for enhancing the gender-responsiveness of adaptive social protection

Juliette Seibold

Public Disclosure Authorized

Public Disclosure Authorized

Overview

1. Introduction: Women and girls
2. Context
3. Why inequality matters for ASP
4. ASP role
5. Making ASP more gender-responsive:
 - a. Outreach, intake, registration, assessment
 - b. Eligibility and enrollment
 - c. Payment mechanisms and transfers
 - d. Human capital and Economic inclusion
 - e. Monitoring and evaluation
6. Policy level interventions
7. Recommendations

Learn More Here



Click on the images to visit the associated [Technical Paper](#) and [Policy Note](#).

1. Women and girls: key to prosperity & resilience

- Women and girls are **central to addressing the interconnected challenges** facing the Sahel.
- Empowering women and girls unlocks the economic potential of **all people**.
- It is not only equitable — **it accelerates progress** on poverty reduction, productivity, resilience, social cohesion, and inclusive economic growth.
- When women are empowered with resources and capabilities, their households, communities, and **entire economies benefit**.
(Kabeer and Natali 2013).

2. How does context shape women's and girls' lives in the Sahel?

What is the gendered context in the Sahel?

Harmful social and cultural norms and practices + discriminatory laws and policies drive gender inequalities.

Compared to men and boys, women and girls have fewer rights and legal protections; less power to make and act on decisions; limited mobility; less access to assets, resources, and opportunities.

Shocks create specific gender-related challenges.

What is the result?

Gender inequalities affect women's and girls' access to education, healthcare, livelihoods, and markets; increase their exposure to gender-based violence (GBV); and worsen their psychosocial well-being.

Reflected in human development outcomes: literacy rates, education completion, early marriage, early motherhood, health outcomes, labor force participation, earnings.

Shocks worsen these vulnerabilities, deepen poverty, heighten exposure to GBV.

3. Why does gender inequality matter for ASP?

Why does the gendered context matter for ASP?

It affects who receives support and how they can harness program benefits to improve their situation.

If ASP doesn't address the gendered context...

Without understanding and addressing specific barriers women and girls face, programs and delivery mechanisms can perpetuate or worsen existing inequalities.

When ASP addresses the gendered context, it can...

Empower women and girls and help them realize their full potential.

Improve **development outcomes** for women/girls and men/boys, and for their entire households.

Foster more **equitable societies** by ensuring everyone can benefit from support and opportunities.

4. What role for ASP in maximizing opportunities for women and girls?

ASP programs advance women's empowerment by...

Widening women's economic opportunities.

Enhancing their access to education, knowledge, and skills.

Improving their well-being, voice, and agency.

Increasing their protection from GBV.

ASP programs can improve outcomes for women and girls + accelerate impacts of interventions when they..

Understand the **gendered context**.

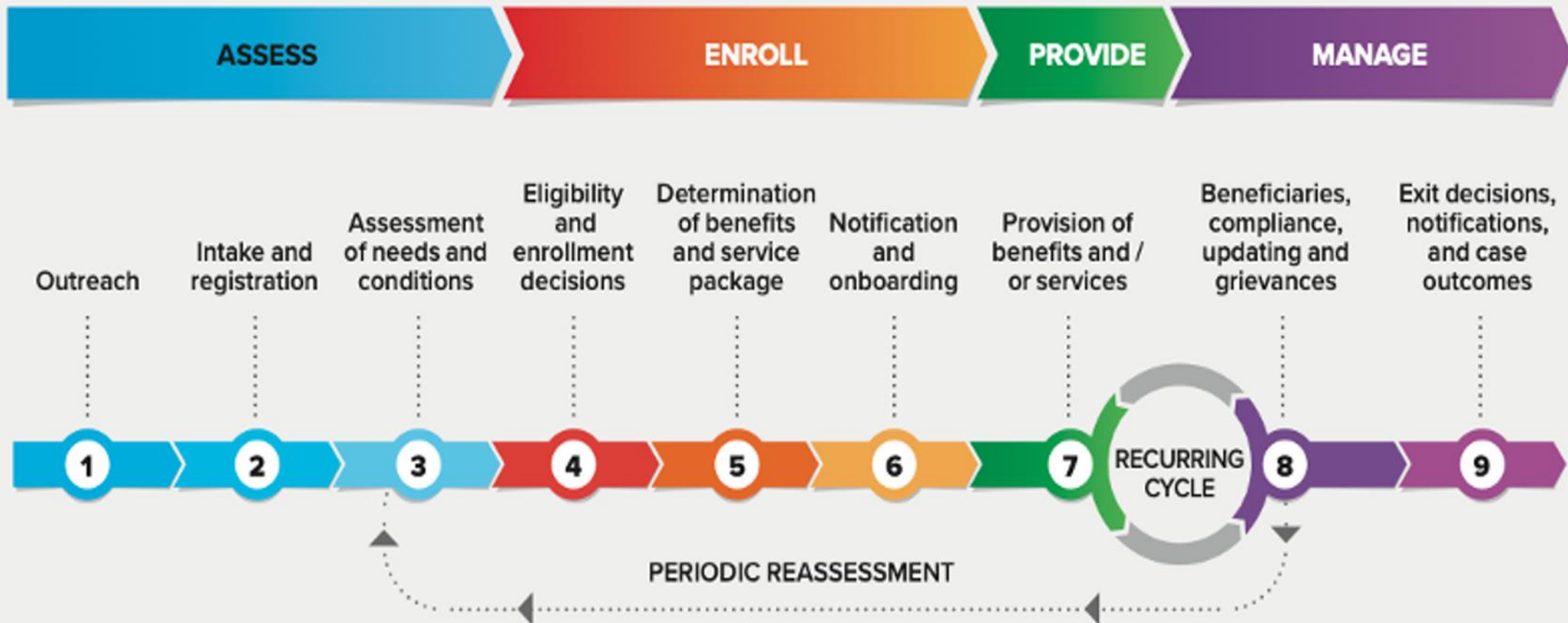
Set clear **objectives** for gender outcomes.

Put in place **gender-informed strategies** and **delivery features**.

Measure results for women and girls.

5. How can ASP be more gender-responsive?

By systematically integrating a gender lens at key phases of the **social protection delivery chain**.



5. How can ASP be more gender-responsive?

ASSESS PHASE: Outreach, intake, registration, and assessment

A gender-responsive approach to outreach...

Addresses women's barriers to participation - including access to communication channels and ID.

Employs context-appropriate strategies to engage both men and women.

Secures support from communities, community leaders, men and boys, particularly when women are designated as program recipients.

A gender-responsive approach to (social registry) intake, registration, and assessment...

Provides opportunities for equal access to program benefits by removing barriers for those at risk of being excluded.

Sets objectives and adapts processes to ensure women's participation and empowerment in data collection.

Collects and assesses disaggregated data.

Reduces potential bias by enumerators and in questionnaires.

5. How can ASP be more gender-responsive?

ENROLL PHASE: Eligibility and enrollment

A gender-responsive approach to eligibility and enrollment...

Sets objectives to increase women's inclusion in ASP programs.

Analyzes household data by gender and age, when defining program's eligibility criteria, to identify gender-specific vulnerabilities and risks (e.g., widows, female headed households, adolescent girls).

Supports women's ID access.

5. How can ASP be more gender-responsive?

PROVIDE PHASE: Monetary transfers and payment mechanisms

A gender-responsive approach to monetary transfers and payment mechanisms...

Designates women as recipients.

Designs payment mechanisms to address women's access barriers and risks — even in crises contexts.

Provides different payment mechanisms — offering choice and convenience.

5. How can ASP be more gender-responsive?

PROVIDE PHASE: Human capital and economic inclusion measures

A gender-responsive approach to human capital measures...

Uses gender analysis to inform design.

Bases design features on evidence of best practices.

Sets objectives and pathways for women's empowerment.

Builds on existing, positive social norms to secure support and participation from men, boys, and communities.

A gender-responsive approach to economic inclusion measures...

Prioritizes women as participants — currently over 90% of beneficiaries are women.

Designs interventions to address women's specific barriers and constraints.

Builds on existing, positive social norms to secure support from men, boys, and communities for women's productive employment.

5. How can ASP be more gender-responsive?

MANAGE PHASE: Monitoring and evaluation

A gender-responsive approach to monitoring and evaluation...

Recognizes the gendered context.

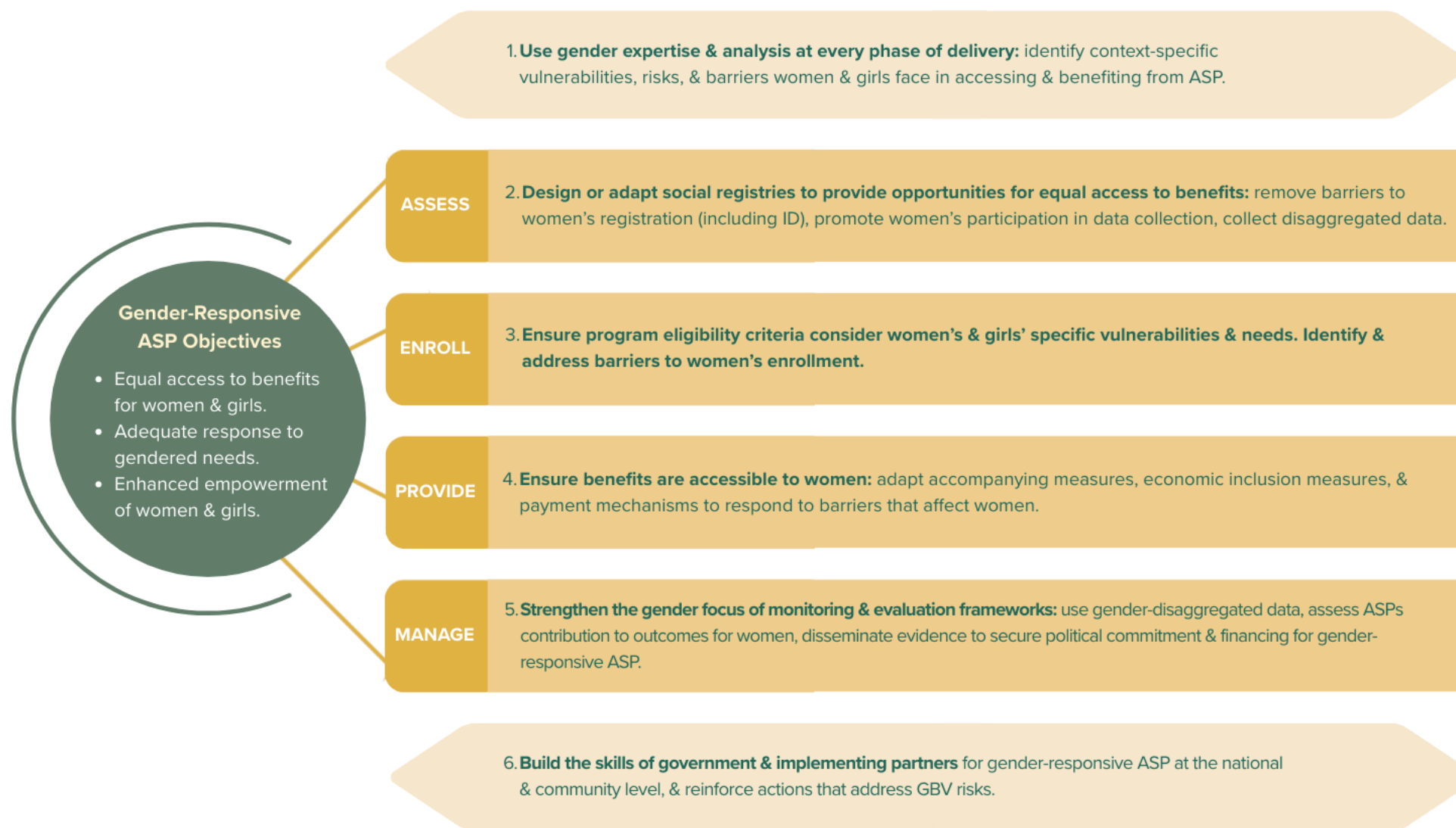
Articulates the program's aims to contribute to women's empowerment.

Gathers and uses gender-disaggregated data and analysis to demonstrate progress and results for women and men.

6. What policy interventions will accelerate ASP impact?

- Strengthen **political commitment and leadership**: use partnerships, sectoral synergies, evidence-based advocacy, and technical support.
- Strengthen **government's capacities**: use training for delivery staff, and monitoring and evaluation that is gender-responsive.
- Engage **women's movements and civil society**: convene, disseminate evidence, and agree joint strategies.
- Harness **robust evidence and analysis**: disseminate evidence on gender outcomes.

7. Recommendations for gender-responsive ASP and accelerated impact



© 2026 International Bank for Reconstruction and Development / The World Bank
1818 H Street NW
Washington DC 20433
Telephone: 202-473-1000
Internet: www.worldbank.org

This work is a product of the staff of The World Bank with external contributions. The findings, interpretations, and conclusions expressed in this work do not necessarily reflect the views of The World Bank, its Board of Executive Directors, or the governments they represent.

The World Bank does not guarantee the accuracy, completeness, or currency of the data included in this work and does not assume responsibility for any errors, omissions, or discrepancies in the information, or liability with respect to the use of or failure to use the information, methods, processes, or conclusions set forth. The boundaries, colors, denominations, and other information shown on any map in this work do not imply any judgment on the part of The World Bank concerning the legal status of any territory or the endorsement or acceptance of such boundaries.

Nothing herein shall constitute or be construed or considered to be a limitation upon or waiver of the privileges and immunities of The World Bank, all of which are specifically reserved.

Rights and Permissions

The material in this work is subject to copyright. Because The World Bank encourages dissemination of its knowledge, this work may be reproduced, in whole or in part, for noncommercial purposes as long as full attribution to this work is given.

Any queries on rights and licenses, including subsidiary rights, should be addressed to World Bank Publications, The World Bank, 1818 H Street NW, Washington, DC 20433, USA; fax: 202-522-2625; e-mail: pubrights@worldbank.org.

