

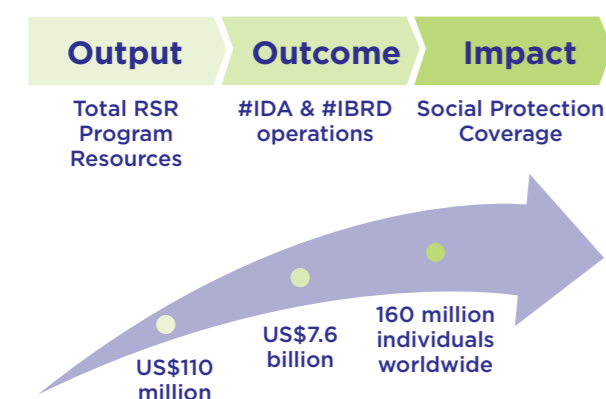
RSR MULTIPLYING IMPACT

Catalytic, Agile, Results Oriented

Rapid Social Response ...

- provides small—averaging US\$530,000—but highly catalytic funding and paves the way for larger World Bank-supported operations
- leveraged over US\$71 billion of International Development Association (IDA) and US\$495 million of International Bank for Reconstruction and Development (IBRD) operations

RSR Results Chain



- Reached over 160 million poor and vulnerable people—increasingly women
- Helped 91 countries enhance the capacity of social protection and jobs systems
- Supported 241 approved proposals worldwide with US\$110million funding through four windows
- Sub-Saharan Africa received 51 percent of RSR resources
- Facilitates new partnerships and promotes global knowledge exchanges such as the South-South Learning Forum and regional and subregional communities of practice on social protection and jobs issues
- Funded ASPIRE (Atlas of Social Protection Indicators of Resilience and Equity) to improve SPJ data quality and availability to better inform SPJ policies and programs
- Helped develop 6 InterAgency Social Protection Assessment (ISPA) tools and their application in 24 countries



© Nahuel Berger | World Bank

RAPID SOCIAL RESPONSE PROGRAM

Building effective and adaptive social protection and jobs systems for rapid response to urgent social needs

For additional information, please visit the following websites:
 RSR Program: <http://www.worldbank.org/rsr>
 World Bank's 2012–2022 Social Protection and Labor Strategy: <http://www.worldbank.org/spstrategy>
 RSR ASPIRE Database - The Atlas of Social Protection Indicators of Resilience and Equity: <http://datatopics.worldbank.org/aspire>
 RSR Nutrition Sensitive MDTF in partnership with SecureNutrition: <http://www.securenutrition.org>
 RSR Disaster Responsive MDTF in partnership with the Global Facility for Disaster Reduction and Recovery (GFDRR): <https://www.gfdr.org>
 InterAgency Social Protection Assessment (ISPA) tools: <https://www.ispatools.org>

For questions, please contact: rsr@worldbank.org and/or the RSR Core Team: **Sándor Sipos**, RSR Program Manager and Partnerships Adviser, ssipos@worldbank.org; **Svetlana Markova**, Communications Officer (Russian Outreach), smarkova@worldbankgroup.org; **Inas Ellaham**, Trust Fund Coordinator/Operations Analyst, iellaham@worldbank.org; **Adea Kryeziu**, Social Protection Specialist, akryeziu@worldbank.org; and **Shams ur Rehman**, Program Analyst, SPJ Partnerships, surrehman@worldbank.org.

Rapid Social Response Program
Social Protection and Jobs
The World Bank



WHAT IS RAPID SOCIAL RESPONSE

The Rapid Social Response (RSR) Program, launched in 2009, supports the world's poorest by building effective and adaptive social protection systems to respond to urgent social needs for sustainable livelihoods and jobs.

RSR is supported by a Multi-Donor Trust Fund Partnership of the Russian Federation, the United Kingdom, Norway, Sweden, Australia, and the World Bank.

RSR Phase 1 (2009–2012): helped low-income countries address urgent social needs stemming from the food, fuel, and financial crises and natural disasters, and build resilience to future shocks.

RSR Phase 2 (2012–present): supports countries through new innovative, catalytic windows aimed at increasing the adaptability of social protection systems particularly high-impact areas such as nutrition and disaster risk management. Gender empowerment is an upcoming theme, piloting new behavioral designs and artificial intelligence approaches.

The RSR Program is a key instrument for implementing the World Bank's 2012–2022 Social Protection and Labor Strategy to increase resilience, equity, and opportunities for the poor worldwide.

RSR develops and builds social protection solutions across three themes:

1. Strengthening social protection systems to protect and empower the poor to become more productive and resilient
2. Supporting South-South learning and communities of practice to increase the coverage, impact, and adaptability of social safety nets
3. Protecting access to basic services for the most vulnerable during crises, shocks, and natural disasters



Ethiopia © Donatella Venturi



© Scott Wallace | World Bank



© Stephen Gladieu | World Bank

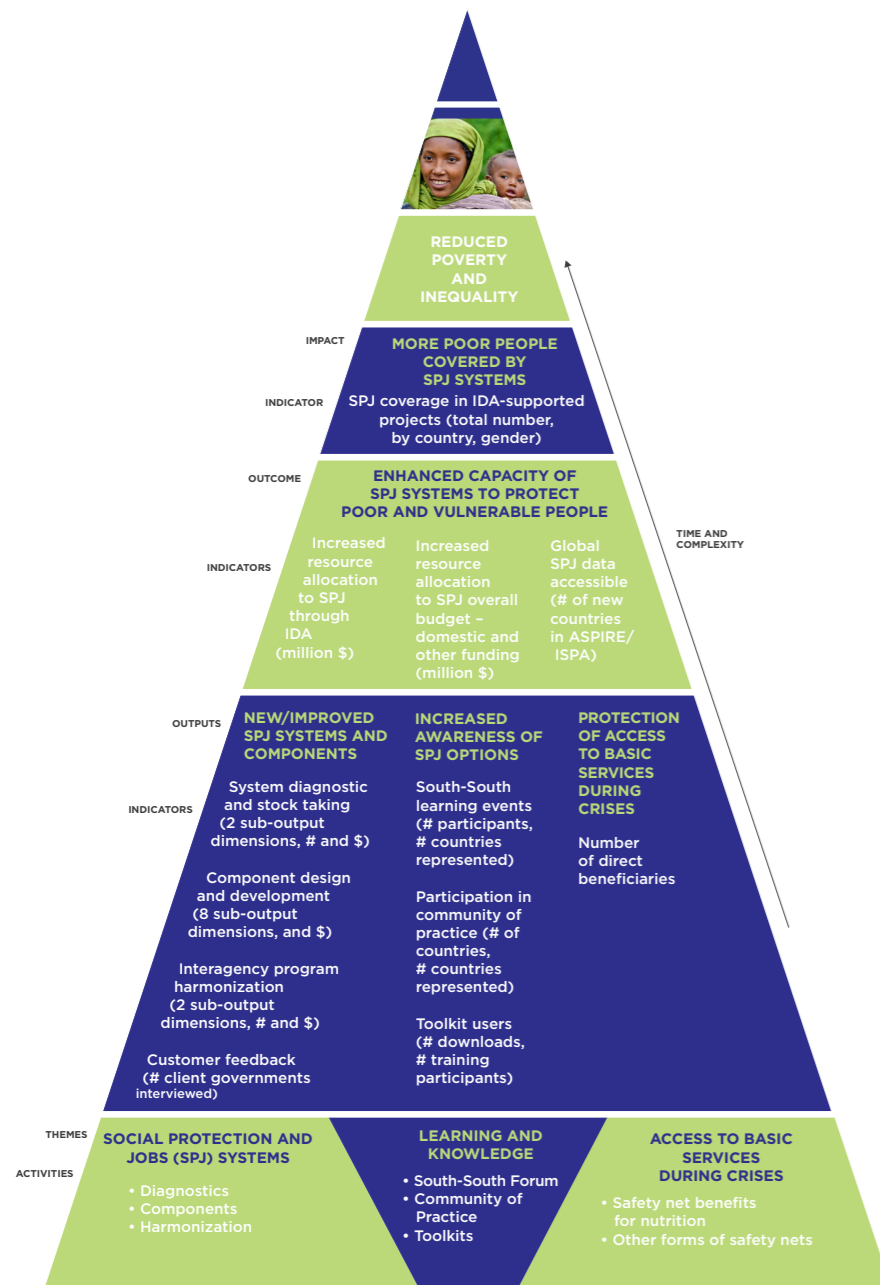


© Mohamad Al-Arief | World Bank



© Arne Hoel | World Bank

RSR Results Framework Pyramid



RSR Innovative and Impactful Projects

In **Bangladesh**, RSR funds are playing a catalytic role in finding innovative ways of reaching the poor in both urban and rural areas. Three RSR grants led to an IDA operation of **US\$300 million** to support improvements in health, nutrition, and cognitive development services.

In **Benin**, RSR support helped create a common targeting and registry platform. A resulting IDA operation the Decentralized Community Driven Services (**US\$76 million**), and the Health System Performance Project (**US\$44 million**) now use the common social protection and jobs platforms.

In **Burkina Faso**, the RSR grant increases access of poor and vulnerable households to safety nets and lays the foundation for adaptive safety net systems and public works programs. The project covers **80,000 people** with cash transfers and awareness programs on health, nutrition, women's empowerment, and early childhood development.

RESILIENCE - EQUITY - OPPORTUNITY - JOBS

RSR promotes crucial knowledge exchange among **francophone Africa** in the implementation and scale-up of cash transfers through a successful Community of Practice on Social Protection and Jobs.

In **Madagascar**, the government, with support from IDA, provides **80,000 poor households** with regular cash transfers under safety net programs. More than 75 percent of cash recipients are women. An additional RSR grant supports development of closer links between the country's nutrition agenda and safety nets, using behavioral designs, training, and complementary activities in the implementation of the safety net programs. Initial reports show **primary school attendance rates improved to 97 percent**.

In **India**, RSR funding is used to **assess the implementation of urban social protection programs**, specifically how beneficiaries are identified and targeted, and to pilot mechanisms to enhance social protection coverage of informal urban workers.

In **Tanzania**, RSR support of **US\$400,000** led to operationalization and scale-up of the Tanzania Productive Social Safety Net Program (**US\$200 million** IDA operation). The program now reaches **6 million people**.

RSR Program in 91 countries

