

**WORLD BANK EDUCATION GLOBAL PRACTICE**

Russian Federation: Analytical Services and Advisory Activity: P170978

# Returns to Education in the Russian Federation: Some New Estimates

Harry Patrinos\* | Suhas Parandekar\* | Ekaterina Melianova\*  
| Artëm Volgin\*

\* Education Global Practice, Europe and Central Asia

**Correspondence**

Email: [sparandekar@worldbank.org](mailto:sparandekar@worldbank.org)

**Data and Code**

Thanks are due to the Higher School of Economics, Moscow for making the Russian Longitudinal Monitoring Study (RLMS) Household data readily available for researchers around the world. The code used for this paper is made freely available for all researchers at <https://bitbucket.org/zagamog/edreru/src/master/>

June 9, 2020

This paper presents new estimates of the returns to education in the Russian Federation. Private returns to education are three times greater for higher education compared to vocational education, and the returns to education for females are higher than for males. Returns for females show an inverse U-shaped curve over the past two decades. Female education is a policy priority and there is a need to investigate the labor market relevance of vocational education. Higher education may have reached an expansion limit and it may be necessary to investigate options for increasing the productivity of schooling.

**KEYWORDS**

Returns to Education, Russian Federation *JEL Codes: I26, I28, J16*

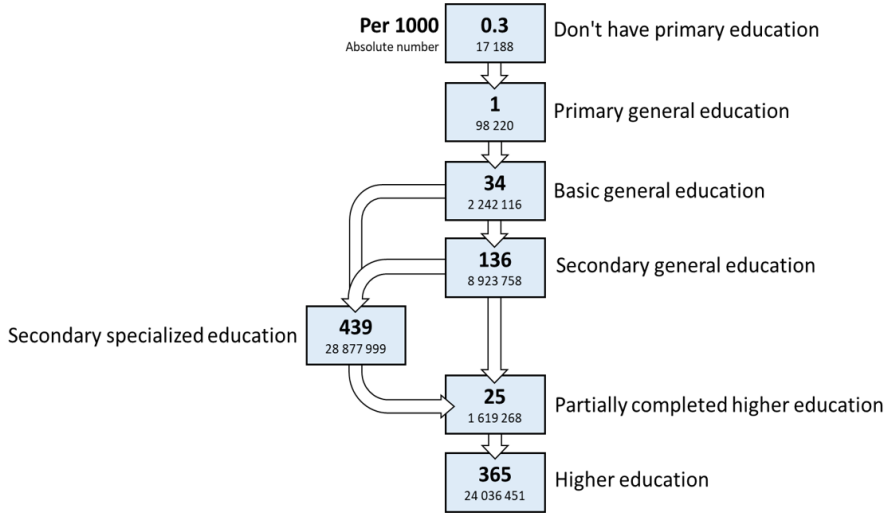
## 1 | MOTIVATION

“How Wealthy is Russia?” is a recently published World Bank report that analyzed the human, natural, and produced capital of the Russian Federation (Naikal et al. 2019). Human capital only accounts for 46% of total wealth in Russia, as compared to the OECD average of 70%. The report showed that even as growth rates of per capita wealth were ten times higher in Russia as compared to the OECD, the gap in levels with OECD is still very wide. The per capita

**Acknowledgments:** *Country Director:* Renaud Seligman; *Regional Director:* Fadia Saadah; *Practice Manager:* Harry Patrinos; *Program Leader:* Dorota Nowak; *Peer Reviewers:* Cristian Aedo; Ruslan Yemtsov; Husein Abdul-Hamid; *Team members:* Polina Zavalina; Zhanna Terlyga. Thanks to seminar participants at the World Bank Moscow office on Jan. 29, 2020 for useful feedback. Any errors are a responsibility of the authors.

human capital wealth level on average for the OECD in 2014 was about USD 500,000 - five times that of Russia's 95,000 (measured in 2014 dollars). In order to catch up with the OECD, the returns to education in Russia will need to be increased. This paper presents the first in a series of papers on returns to education that will be instrumental in generating policy recommendations to improve the share of human capital as part of Russia's wealth. This paper examines the trends in returns to education in the Russian Federation using a common methodology used for more than 100 countries (Montenegro and Patrinos 2014; Psacharopoulos and Patrinos 2018).

### Number of People in Russia Aged 25-54 by Achieved Level of Education (per 1000 and an absolute number)



**FIGURE 1.1** Labor Force Distribution by Educational Level (Rosstat)

Figure 1.1 indicates the educational attainment of the population segment 25 to 54 years, which is the age group for which Rosstat provides this information. Figure 1.1 shows less than 14% of the labor force with a final attainment of secondary general education (academic High School) - the main choice is between vocational education (nearly 45%) and university education (about 40%). It is a well-known fact that on cognitive attainment at Grade 9, Russian students are already at par with OECD students (PISA scores are designed with an OECD mean of 500); what comes in later education levels and the labor market is the crucial issue for convergence with OECD on human capital wealth levels.

A detailed analysis of the returns to education in the Russian Federation will provide insights into the stylized facts mentioned above. Together with other research being implemented by the World Bank and by other researchers, the purpose of this analysis is to come up with a set of evidence-based policy recommendations to enhance the human capital wealth of the Russian Federation.

In this paper we report on an estimate of the private rate of return to investment in education in the Russian Federation. Human capital, or the stock of skills that is possessed by the labor force, is pivotal in enabling countries and individuals to flourish in a multifaceted, increasingly comprehensive, interrelated, and rapidly changing society (Schultz 1972; Mincer 1974; Heckman, Lochner, and Todd 2003; Becker 2009; Broecke 2015). The returns to investment in

education have been a popular empirical analysis in research to study the relationship between schooling and earnings. Private returns can also explain the private demand for education. The literature suggests that each additional year of schooling produces a private (that is, individual) rate of return to schooling of about 8% to 9% a year (Psacharopoulos and Patrinos 2018; Montenegro and Patrinos 2014). Globally, the returns to tertiary education are highest, followed by primary and then secondary schooling; this represents a significant reversal from many studies' prior results. Policy makers can learn much from Mincerian results; for instance, further expansion of university education appears to be very worthwhile for the individual, meaning that governments need to find ways to make financing more readily available, and that high rates of return are found through investment in girls' education.

## 2 | LITERATURE REVIEW

In a worldwide perspective, the latest findings on returns to education can be condensed to the following (Psacharopoulos and Patrinos 2018): (1) overall, an amplified share of workers with tertiary education at the labor market has not reduced the magnitude of returns on the investment due to "skill-biasedness" of the technological progress boosting the demand for higher skills; (2) low- and middle-income regions are characterized by the largest returns (except for the Middle East and North Africa, with the lowest returns); (3) the private returns to education for women outstrip those for men by roughly two percentage points; (4) private sector employees receive greater returns than those working in the public sector; (5) social returns to education are negatively associated with a country's level of economic development and education level; and (6) on average, there is a growing trend in returns to higher education.

A separate, albeit scarce in terms of quantity, quality, and reliability, corpus of research focused on the Russian/USSR case. In the USSR during the period before education reforms the rates of return to schooling were strikingly low: 2-3% for secondary and 5% for higher education levels (Graeser 1988). Low returns to human capital were in line with a planned economy offering free education, centralized allocation of labor, and the ideology of proletarian superiority; a similar picture was observed in other (at the time) socialist countries (see, for example, Munich, Svejnar, and Terrell 2005).

However, an earlier attempt to establish the contribution of education to productivity took place during Soviet times. Strumilin showed that those who were more educated contributed more. He even calculated earnings benefits, and though his calculations did not discount earnings, the estimates of the returns were high, at about 17 % in 1919 (Strumilin 1924).

A group of scholars reported that during the transition period from a planned to market economy in Russia rates of returns to schooling rose sharply (Brainerd 1998; Clark 2003; Vernon 2002). The upsurge in wage premiums to education (especially university education) was asserted to be a pivotal factor that exacerbated wage dispersion: salaries of highly skilled and trained workers had gone up in absolute terms and compared to less-educated workers (Fleisher, Sabirianova, and Wang 2005). However, returns to schooling declined for those people who took advantage of higher education expansion in a post-communist Russia (1990-2005) in comparison to youths who obtained university degrees in the preceding periods (Kyui 2016). One researcher exploited data about the average education level at the end of a Soviet period as an instrument and inferred that the growth in the proportion of city dwellers with university degree was associated with a rise in the wages of city residents (Muravyev 2008). Despite enhancements in premiums to tertiary (professional and higher) education in the Russian Federation at the beginning of the 2000s, the labor market was shown to be different from that of developed countries. Comparing Russia with France, the existence of a vertical education-occupation mismatch in Russia was demonstrated (Kyui 2010). A recent paper claims that horizontal education-job mismatch negatively impacts upon the earnings of university graduates in all fields except

for the lowest-paid ones (Rudakov et al. 2019). Studies also suggest that education-job mismatch during studentship for individuals obtaining vocational education is "penalizing": combining studies with a job unrelated to a person's specialty entails a mismatch after his/her graduation (Dudyrev, Romanova, and Travkin 2018).

Another research line ascertained that during the transition returns to education in Russia were not rising and remained among the lowest in the world (Cheidvasser and Benítez-Silva 2007). The contradiction with previous inferences and reasoning was explained by the omitted variable bias: past researchers did not account for regional covariates and rural residence, thus overstating the returns. It was highlighted that the excess of well-educated workers seemed to be the main underpinning factor of wage differentials in Russia after the dissolution of the Soviet Union. Subsequently, Calvo et al. (2015) provide evidence of a reduction in skill premiums in Russia during the 2002 - 2012 period that was claimed to be one of the most relevant underlying forces explaining a deceleration in trends of widening wage inequality (Calvo, Lopez-Calva, and Posadas 2015). Belskaya et al. (2014) evaluated a large-scale college expansion in Russia after the breakdown of the Soviet Union (Belskaya, Sabirianova Peter, and Posso 2014). Among the key conclusions is that as the number of university campuses grew, individuals with low returns to schooling grew as well. But for a marginal person, who switched into a treatment group as a result of new campuses opening, the total gains from attending a college are considerable and positive. Furthermore, the scholars found that students with higher returns are attracted more intensively by new campuses opened in constrained municipalities (small non-capital cities or those lacking higher education institutions before college expansion) in comparison to the unconstrained ones. Like the global patterns, studies in Russia have shown that in the post-Soviet decade, workers hired in firms controlled/owned by private organizations/individuals, retained a marked premium to education in contrast to workers employed in state companies. This is rooted in a greater flexibility of private firms, enabling them to overcome restrictions caused by the rigidity of state wages, hence leading to higher returns to schooling (Clark 2003). Borisov 2007 was among the first who employed cohort analysis, using Mincerian wage equation for the Russian data, and found evidence favoring the existence of a powerful vintage effect (especially for men) in the Russian labor market during the transition period: consecutive cohorts were paid more than the previous ones, keeping educational achievements constant; this phenomenon was entrenched in the specificity of a Soviet system, encouraging the pursuit of communist interests through extensive propaganda. A source of heterogeneity in rates of returns to education in Russia hails from gender differences, just like the patterns observed globally: women received higher returns to higher education than men (e.g., Cheidvasser and Benítez-Silva 2007; Luk'yanova 2010). By the end of the first decade of the 21st century, some scholars detected positive changes concerning tertiary education in Russia (and other BRIC countries): payoff rates to university completion have generally magnified relative to the rates in lower levels of education and were higher than returns to secondary schooling (Carnoy et al. 2012). This runs counter to the logic of capital theory, implying a decline in the rank order of returns with education level, which should hold with a country's economic advancement. Private rate of returns, even accounting for tuition cost, in Russia are especially high in business/economics as a field of study (Carnoy et al. 2012). Additionally, rates of returns to vocational education were found to be lower than payoffs to tertiary education (Borisov 2007). In a recent paper, Gimpelson 2019 argues that the labor market in Russia might be at risk of over-education, which leads to a reduction in educational premiums.

### 3 | DATA

In this paper we use the Russian Longitudinal Monitoring Survey (RLMS) - the only representative Russian survey with a sizable panel component allowing for dynamic analysis (Kozyreva, Kosolapov, and Popkin 2016). The data are notable for their reliability, diversity, and applicability to a variety of research questions. The RLMS embraces informa-

tion on people's income and expenditure structure, their material well-being, educational and occupational behavior, health state and nutrition, migration, etc. RLMS sampling procedures have been thoroughly and extensively described elsewhere (Kozyreva, Kosolapov, and Popkin 2016). The present research uses all 23 waves (1994 - 2018) that are available as of June 9, 2020. Two years (1997 and 1999) are missing in the data because data was not collected in those years due to funding problems. The sub-sample selected for empirical investigation in this paper consists of working individuals aged 25-64 who are out of school and have positive labor market experience and income.

Table 3.1 shows descriptive statistics for the key variables under focus and sample sizes by years. The average years of experience is relatively stable over time, years of education slightly go up with higher education level becoming increasingly popular in Russia just as the proportion with vocational education declines.

**TABLE 3.1** Descriptive Statistics, RLMS

Year	N	Wage		Experience		Education years		Education		
		Mean	SD	Mean	SD	Mean	SD	Secondary Percent	Vocational Percent	Higher Percent
1994	3044	272761.9	347856.1	21.4	9.6	12.7	2.3	22.3	50.4	27.3
1995	2694	557844.7	621599.5	21.7	9.6	12.7	2.2	22.3	47.8	29.8
1996	2282	817936.7	1004035.7	21.6	9.6	12.8	2.2	19.7	48.6	31.7
1998	3102	906.3	950.7	22.3	9.6	12.7	2.2	19.8	52.0	28.2
2000	3215	1821.3	2570.5	22.3	10.0	12.7	2.2	20.3	51.3	28.4
2001	3605	2681.0	2849.6	22.0	9.8	12.8	2.2	19.8	49.3	30.9
2002	3803	3612.8	4316.0	22.0	9.9	12.8	2.1	19.3	49.9	30.8
2003	3858	4378.6	4014.0	22.2	10.1	12.8	2.2	19.1	49.4	31.5
2004	3968	5379.0	4918.5	22.0	10.2	12.8	2.2	18.4	50.3	31.2
2005	3913	6637.9	5716.1	22.1	10.4	12.8	2.2	18.4	49.6	32.0
2006	4804	8089.9	6563.9	22.2	10.4	12.8	2.2	18.0	50.9	31.1
2007	4726	9662.5	7124.7	22.5	10.6	12.8	2.2	18.5	50.2	31.3
2008	4827	12826.3	10784.5	22.6	10.8	12.9	2.3	17.9	47.8	34.3
2009	4804	13363.1	10411.4	22.5	11.0	12.9	2.3	16.6	47.9	35.5
2010	7326	14769.9	12587.1	22.6	11.1	13.0	2.3	16.9	48.1	34.9
2011	7167	16226.8	12855.5	22.5	11.1	13.0	2.3	18.0	46.9	35.1
2012	7428	18880.7	15119.0	22.5	11.2	13.0	2.4	18.2	45.9	35.9
2013	7327	20601.4	16411.5	22.5	11.2	13.1	2.3	17.0	46.7	36.3
2014	6148	22772.6	17288.4	22.3	11.1	13.1	2.3	16.5	45.8	37.7
2015	6231	23570.7	16996.4	22.2	11.2	13.2	2.3	15.2	44.4	40.4
2016	6297	24951.1	18640.7	22.3	11.1	13.3	2.3	14.7	43.6	41.8
2017	6359	26254.1	19555.4	22.4	11.0	13.3	2.3	14.0	45.0	40.9
2018	6121	28081.0	19705.8	22.5	10.8	13.3	2.3	13.8	45.0	41.2

## 4 | METHODOLOGY

The Mincer equation –arguably the most widely used in empirical work –can be used to explain a host of economic, and even non-economic, phenomena. One such application involves explaining (and estimating) employment earnings as a function of schooling and labor market experience. The Mincer equation provides estimates of the average monetary returns of one additional year of education. This information is important for policy makers who must decide on education spending, prioritization of schooling levels, and education financing programs such as student loans (Patrinos 2016). In that respect, the Mincer equation is the most used econometric framework for estimating the return to investment in education.

The empirical analysis in this paper presents results for the general working population of the Russian Federation aged 25-64. We use a basic Mincerian specification shown in equation (1):

$$\text{Log}(Wage) = b_0 + b_1 \cdot Educ + b_2 \cdot Exp + b_3 \cdot Exp^2 + \epsilon \quad (1)$$

where  $\text{Log}(Wage)$  is a logarithm of monthly wage,  $Educ$  stands for the years of education or highest attained level of education,  $Exp$  and  $Exp^2$  reflect the years of working experience and its quadratic term respectively,  $b_0$  is an intercept,  $b_1 \dots b_n$  are the respective slope estimates,  $\epsilon$  refers to a normally distributed error term.

### Dependent variable

For the dependent variable, we used the logarithm of an average monthly wage within the past year on a person's primary job (variable  $J13.2$  in the RLMS dataset). If a person had an additional job, the maximum wage value among the two (variables  $J13.2$  and  $J40$ ) was selected for the analysis. In the waves from 1994 to 1996, the question mentioned above was absent; for those waves, we exploited a variable about the average amount of money earned by a respondent within the past 30 days (variable  $J10$ ) as a reasonable approximation.

### Independent variables

The present research uses both metric (measured in years) and categorical education variables. The metric version was created by assigning the average expected number of years corresponding to each attained education level. For the categorical version (EDUC), we distinguished three categories: (1) *secondary*, (2) *vocational*, and (3) *higher*. Incomplete levels were incorporated into the respective upper categories (e.g., incomplete higher - into higher). Vocational education here includes the International Standard Classification of Education (ISCED) levels for vocational education: 35, 45 and 55<sup>1</sup>. We are interested in exploring returns to education in general, and vocational and higher education. Estimations of premiums to primary and secondary schooling levels are technically not possible since the number of adults without primary education, and the number of adults with only primary schooling, is minuscule in the general population. The experience variable was calculated as a difference between current age and years of education minus 6 (the typical school starting age). Equation (1) was estimated separately for each year for the entire sample and separately for males and females. The Appendix presents the results for each year.

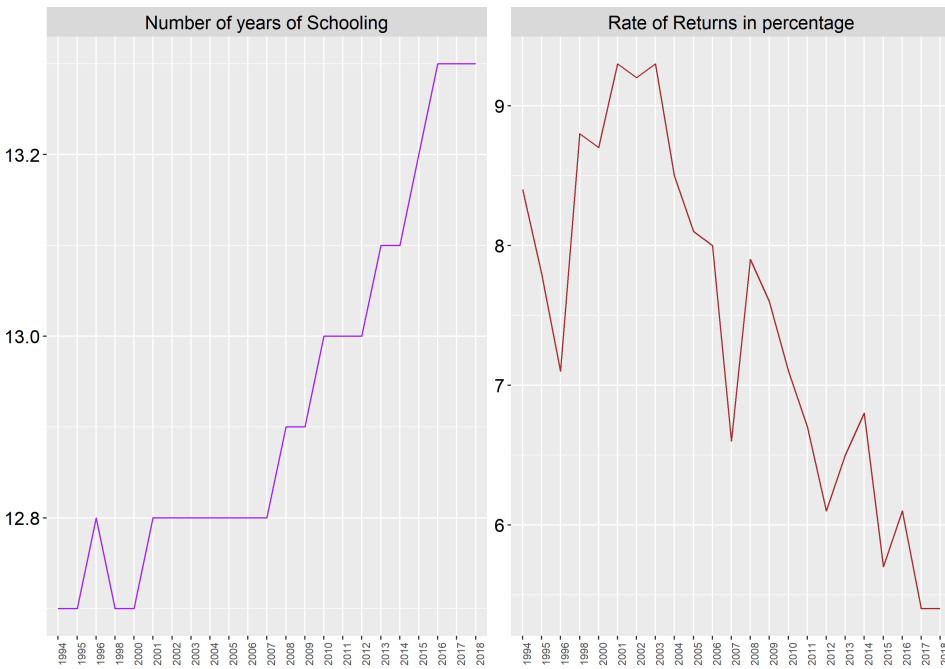
We are particularly interested in the returns to specific levels of education, estimated through a series of dummy variables. Using Secondary Education completed as the base or omitted dummy for purposes of interpretation, we use dummy variables for Vocational Education and Higher Education. The specification is presented in Equation (2):

<sup>1</sup> The ISCED classification as it is applied to the Russian Federation is graphically explained in the OECD online publication accessible at <https://gpseducation.oecd.org/CountryProfile?primaryCountry=RUS>

$$\text{Log}(Wage) = a_0 + a_1 \cdot D_{Voc} + a_2 \cdot D_{Higher} + a_3 \cdot Exp + a_4 \cdot Exp^2 + a_5 \cdot Gender + \epsilon \tag{2}$$

## 5 | RESULTS

Results of equation (1) are shown in Figure 5.1 with an adjoining graph showing the increase in the mean years of education over the period 1994 to 2018. Returns by each year in the Russian Federation need to be considered very carefully because of the high educational attainment of the population. There are hardly any individuals in the sample who have less than a High School education (precisely 35 out of 1000 as shown in Figure 1.1, and only a handful of individuals who finished their education at the High School level. Consequently the mean years of education is more than 13 years.



**FIGURE 5.1** Labor Force Distribution by Educational Level (Rosstat)

Figure 5.2 demonstrates earnings ratio by educational level (secondary education is equal to 100%) for 1998, 2006, and 2018. The graph depicts a pronounced gap in the wages of people with secondary or vocational education compared to those with university level especially in earlier years in Russia.

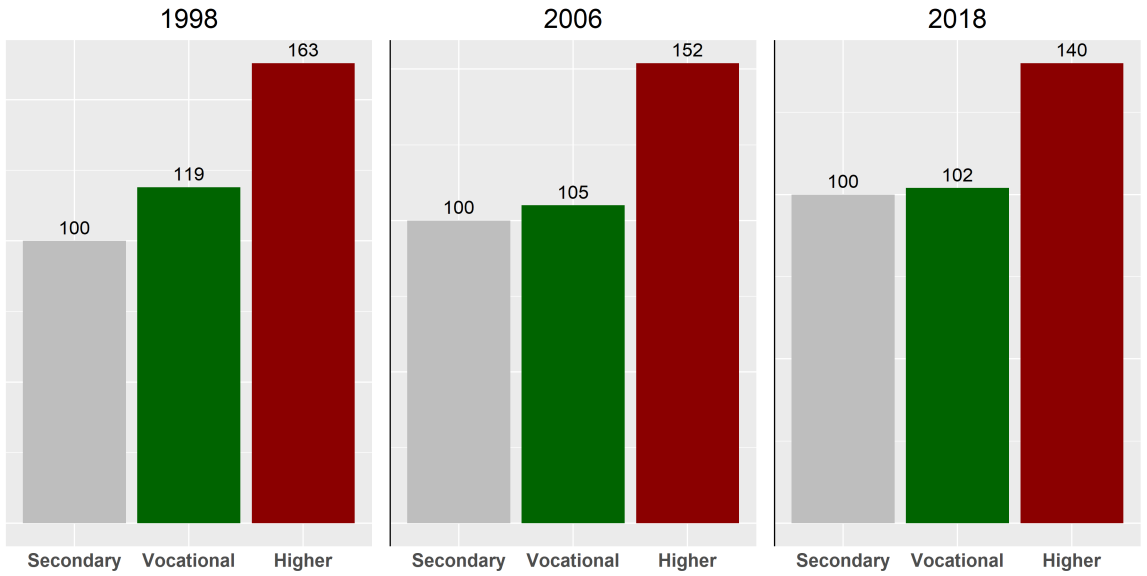


FIGURE 5.2 Earnings Ratio by Educational Level (Secondary Education = 100%)

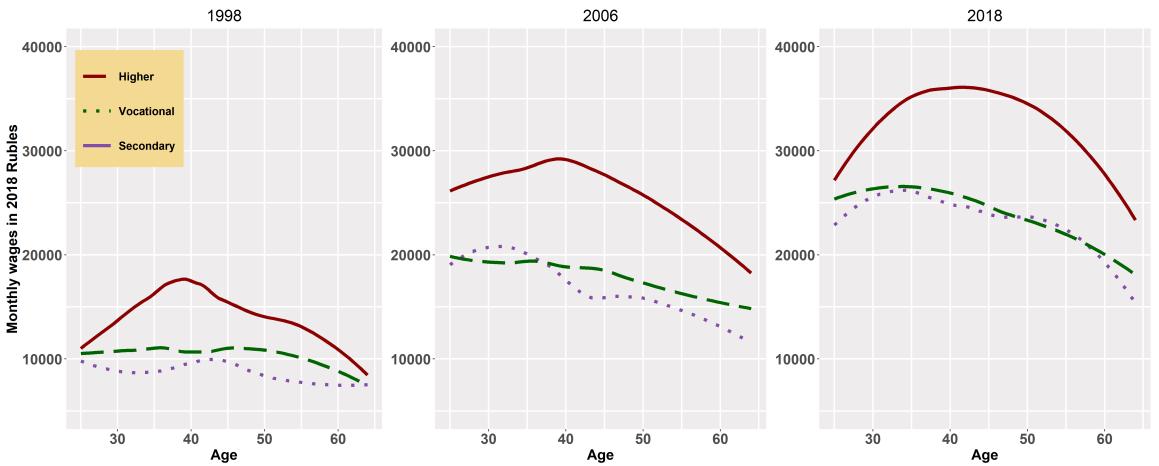


FIGURE 5.3 Age-earning Profiles by Level of Education



Figure 5.3 displays age-earning profiles in Russia by education level. There is a clear concave pattern for higher level, whereas for secondary and vocational levels, the association between wages and age is almost flat or descending. While the gaps are declining between higher and secondary, they are increasing between higher and vocational.

Figure 5.5 summarizes the results, showing rates of overall and gender-wise returns to education in Russia for the period 1994-2018: the percentage increment in a person's earnings due to one additional year of schooling. Overall, one can notice a moderate curved growth in returns to education in Russia, achieving its peak in the early 2000s (returns of 9.8%), which is followed by a downward pattern (returns of 5.6% by 2018). The values of returns to schooling in recent years in Russia seem to lag far behind the global average of 9.5% (Psacharopoulos and Patrinos 2018). Education payoffs for women are higher than those of men, but the difference appears to have narrowed in recent years.

Figure 5.4, panel (a) displays rates of returns to Higher and Vocational education (as compared to Secondary education) in Russia for the period 1994-2018. The results suggest that on average wage premiums to university education in Russia are roughly 3-5 times greater than to vocational schooling. The observed trend for premiums to both Vocational and Higher education levels is similar to the trend for education in general with the following peaks: 18% per year for Higher education and 6% per year for Vocational education compared to the average earnings of workers with a Secondary education. The interesting pattern to note from panel 5.4a is the apparent co-movement of vocational education and higher education - the higher education smoothing curve turns a bit more sharply than the one for vocational education, but their movement is matching, even at second-order levels of smoothness. Further, even though higher education premium remains much above the premium for vocational education, there is a perceptible narrowing of the difference in recent years. Panel 5.4b, which is drawn from Telezhkina 2019, shows the interesting pattern of higher education enrollment rates for the population of 17-25 year olds. Panel 5.4b shows the downturn in returns reflected in enrollments, with the peak in enrollments coming about 10 years later. The latest estimate of the returns to higher education in the Russian Federation is about 8%, which is just below the EU average of about 10% and the global average of 15% (Psacharopoulos and Patrinos 2018), and declining, in line with the expansion that took place up to 2009.

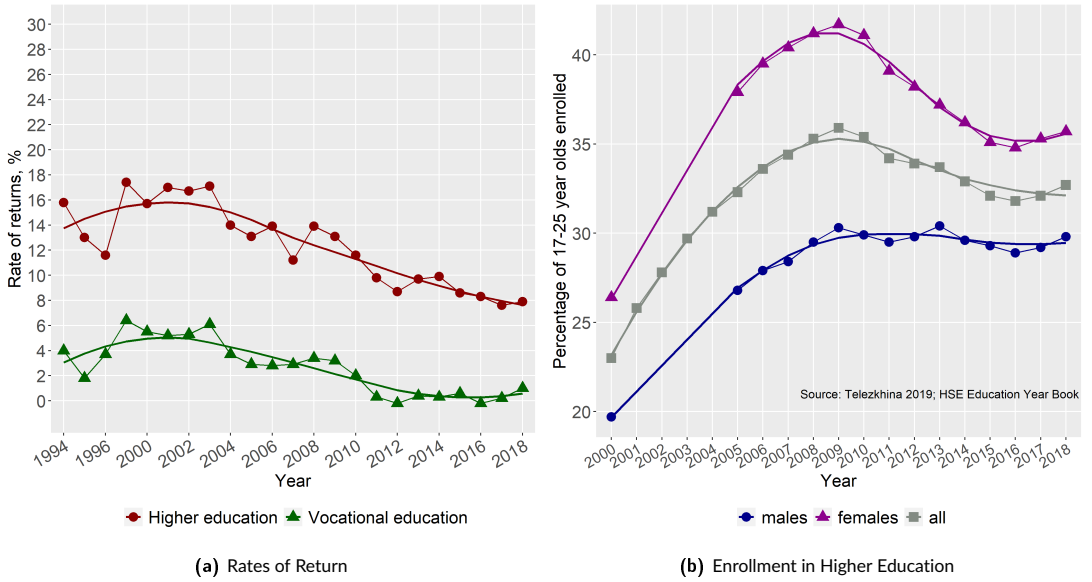
When estimated separately by gender, we find trend variation by gender. The results from estimation of earnings functions show that annual returns to Higher education for males varied from 9% to 15%, whereas women's returns are described by an inversely U-shaped pattern, reaching their maximum of 28% in 2003. Within roughly the last 5 years, wage premiums to higher education for women have stabilized at around 12%, a couple of percentage points ahead of men. Gender wise enrollment rates in higher education (not shown) ten years later appears to match the differences in rates of return, strengthening the hypothesis that market rates of return to education in Russia do indeed influence individual continuing school decisions.

A similar comparative picture is observed with respect to vocational education, albeit with a different kind of variation by gender (see Figure 5.6): returns for males are almost flat within the time period while returns for females shows a concave pattern. The overall outcome concerning payoffs to schooling isolated by gender has been confirmed in a similar fashion by past studies (e.g., Cheidvasser and Benítez-Silva 2007).

## 6 | INSTRUMENTAL VARIABLE SPECIFICATION

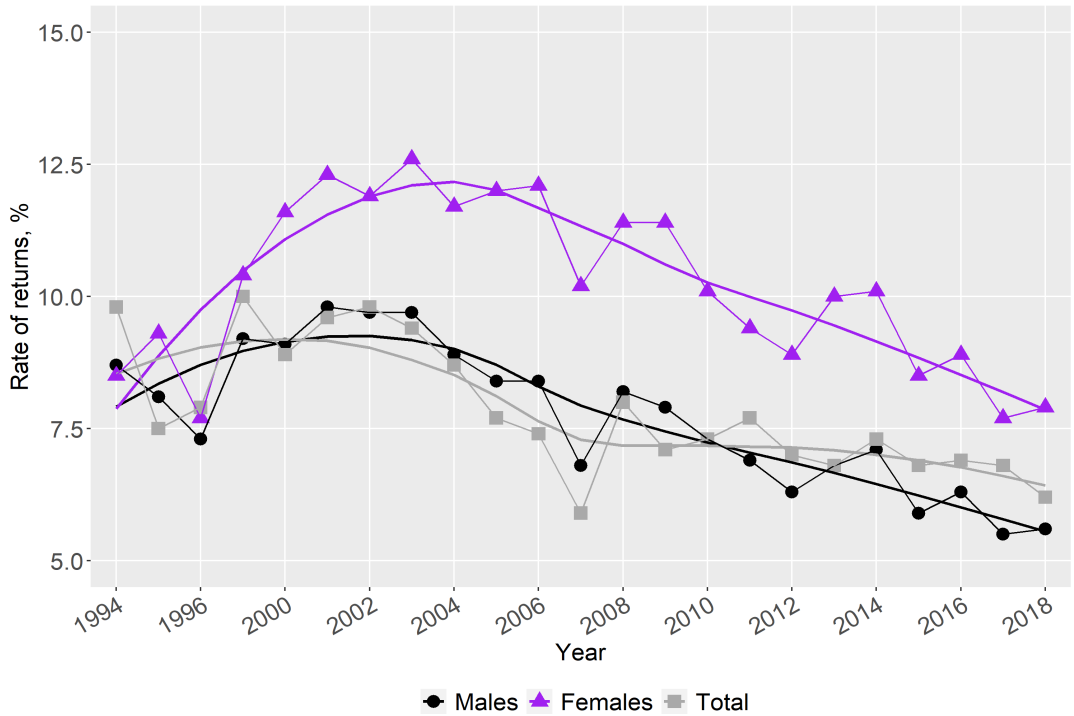
A strand of the literature holds that returns estimated from Ordinary Least Squares (OLS) may be understated due to the possible presence of an omitted variable bias and resulting heterogeneity in the net benefits of additional schooling across individuals (e.g., Sakellariou and Patrinos 2004; Akhmedjonov 2011). Instrumental variable (IV) regression is a

**FIGURE 5.4 Rates of Returns to Higher and Vocational Education in Russia, RLMS 1994-2018**

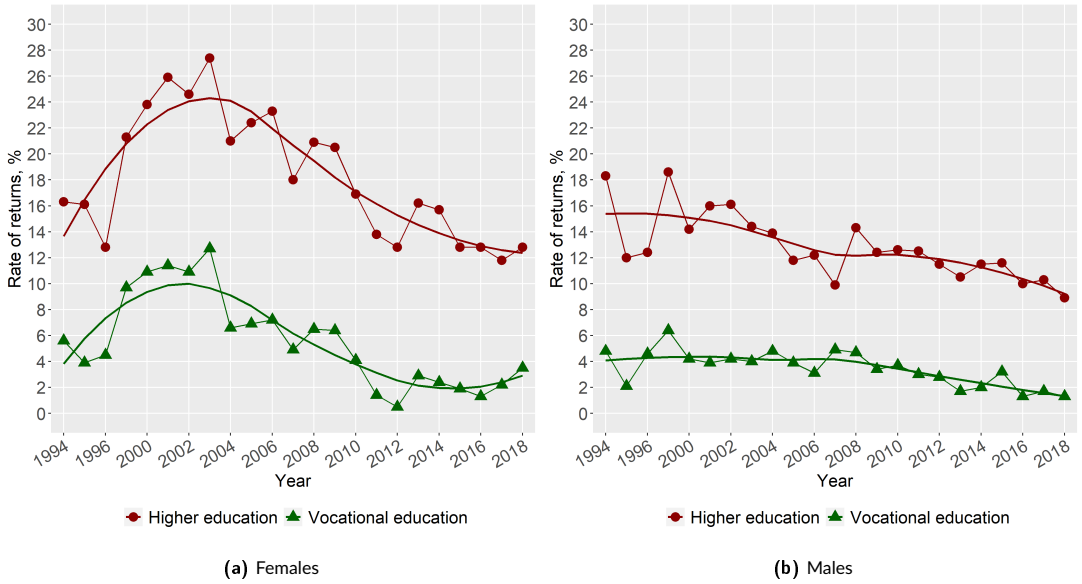


(a) Rates of Return

(b) Enrollment in Higher Education



**FIGURE 5.5 Rates of Returns to Education in Russia, RLMS 1994-2018**



**FIGURE 5.6** Rates of Returns to Higher and Vocational Education in Russia, RLMS 1994-2018

method used to deal with these issues (e.g., Angrist and Keueger 1991; Card 2001).

In this study, we use indicators of the Parental Socio-Economic Status (SES) of individuals when the individuals were 15 year olds, as instrumental variables. Even though some authors think that family background related variables may suffer the same problem as an endogenous education variable, variables such as Father’s education have been used instruments in earnings functions (e.g., Trostel, Walker, and Woolley 2002; Sakellariou and Patrinos 2004; Parker and Van Praag 2006; Hoogerheide, Block, and Thurik 2012). The reasoning is that variables such as parental education are related to the schooling level of an individual through genetic or environmental effects when an individual is a dependent child in a parent’s household. However, parental variable direct influence on *adult* earnings, independent of the influence on schooling, would be mild. In such a case it has been shown that the findings would not substantially deviate from the benchmark case of a strictly exogenous instrument (Hoogerheide, Block, and Thurik 2012).

The current paper exploited retrospective RLMS questions, asked in 2006 and 2011, about the mother’s and father’s occupation (J216AC08, J216BC08), and their highest achieved education level (J217A, J217B) at a respondent’s age of 15. Occupational categories were converted to indices with the help of The Standard Occupational Prestige Scale (SIOPS). The final family background measures represented maximum values for the two SES dimensions between two parents. Besides, following the lead of several past studies (e.g., Angrist and Keueger 1991; Card 1999; Kim et al. 2019) we make use of dummies for the Russian regions, in which individuals reside at the time of the interview (STATUS), as instruments. The analysis was performed, using 2018 RLMS data to capture the most recent labor market situation.

The general TLSL specification of interest can be written by the following equations.

First stage:

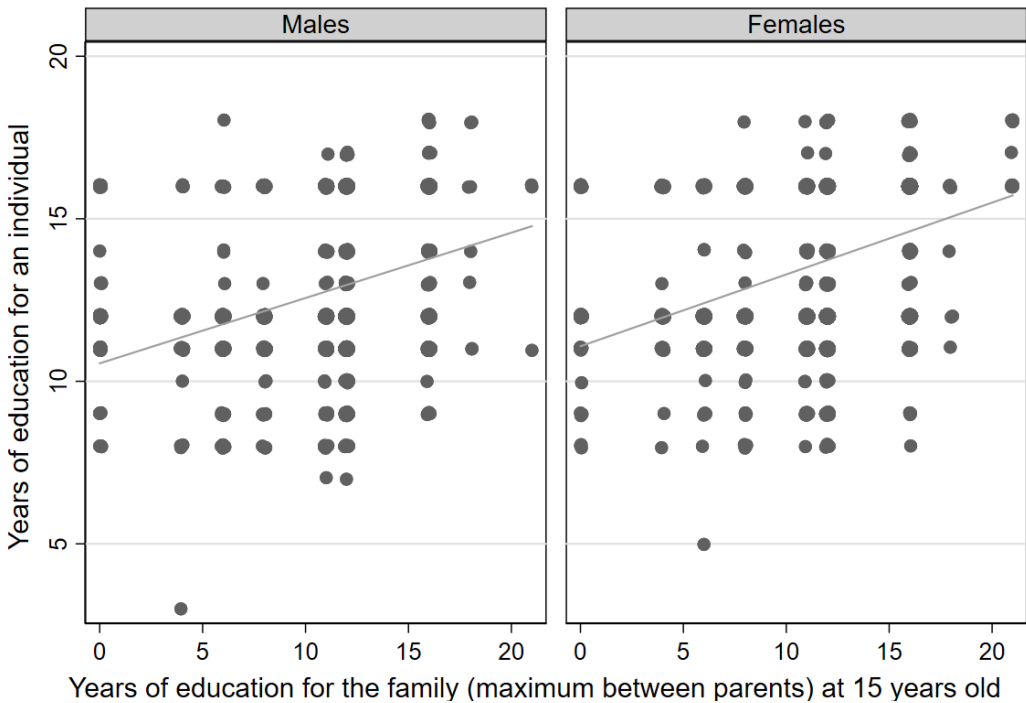
$$x_{1i} = z_i' \pi_1 + x_{2i}' \pi_2 + v_i \tag{3}$$

Second stage:

$$y_i = x_{1i}\beta_1 + x'_{2i}\beta_2 + \varepsilon_i \quad (4)$$

where  $y$  is a logarithm of wages for  $i = 1, 2, \dots, N$ ;  $x_{1i}$  reflects years of education (an endogenous regressor);  $x_{2i}$  is a vector of exogenous variables: labor market experience, its squared term, and a binary characteristic for living in urban area;  $z_i$  is a vector of instrumental variables;  $\beta_1$  is the causal effect of  $x_1$  on  $y$ ;  $\varepsilon_i$  and  $v_i$  are normally distributed error terms.

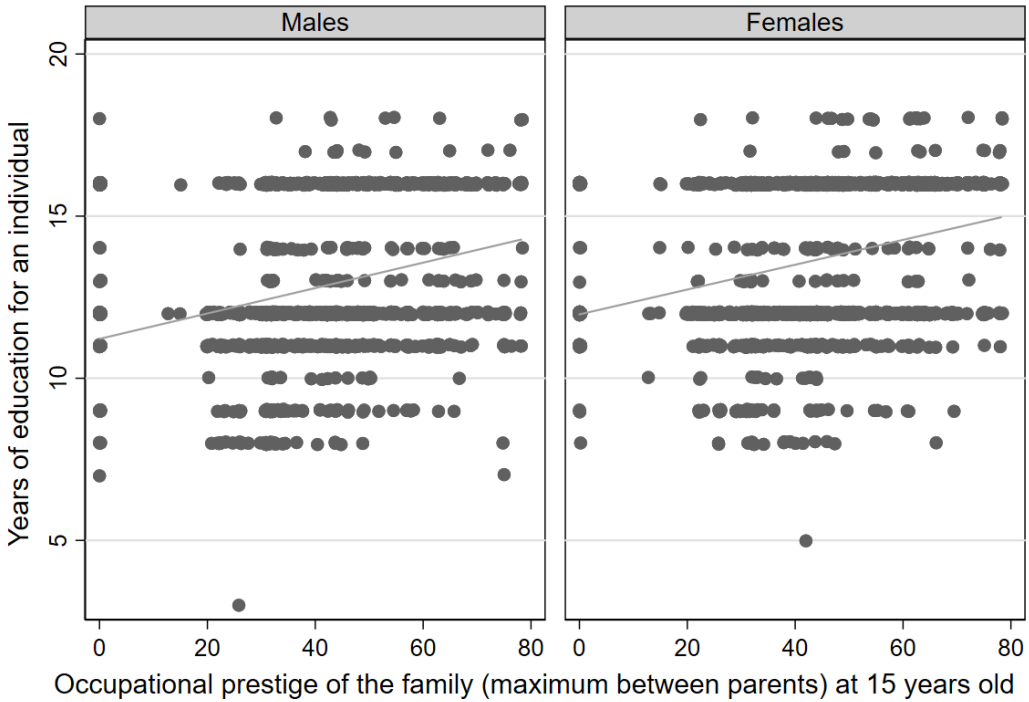
Figures 6.1 and 6.2 portray the relationship between years of schooling and family SES indicators by gender. It can be observed that as expected education and family SES are positively correlated, pointing on potential strength of the instruments.



**FIGURE 6.1** Individual Years of Education and Family Education Years at 15 Years Old

Table 6.1 presents the estimated schooling equation for males and females. The results demonstrate that individuals, whose parents had higher occupational prestige and more completed years of education, study longer. Only statistically significant regional dummies are maintained in the model.

The IV estimation results, using the parental SES and regional dummies, are shown in Table 6.2. The instrumental variable approach yields the rate of returns to education in Russia of around 14.3% for females and 8% for males. Females' IV parameters appeared to be tangibly larger compared to the respective OLS estimate of 7.6%, while for



**FIGURE 6.2** Individual Years of Education and Occupational Prestige (SIOPS) of the Family at 15 Years Old

males the IV and OLS (6%) estimates are much closer in magnitude.

To ascertain the statistical validity of the implemented instruments we conducted an array of diagnostic tests (see Table 6.2). An F-test indicates that the instruments under focus are strongly correlated with the endogenous regressor (schooling). Next, Stock and Yogo's critical values test points out that even if we are willing to tolerate a 5% IV relative bias or 10% IV rejection rate at maximum, our instruments are not weak because the Cragg-Donald Wald F statistic in both models exceeds the corresponding critical values. The Hausman endogeneity test shows that for the sub-sample of males, the education variable does not seem to be endogenous ( $p > 0.05$ ), therefore, the use of instruments is valid only for females. The Sargan-Hansen test also supports this conclusion. Overall, the diagnostics contend that the OLS estimates of returns to schooling for males in the given specification are more preferable over the IV estimates, whereas for females the IV parameters are appropriate.

## 7 | CONCLUSIONS

Russia is a highly educated country, and the level schooling continues to increase. More than one-third of the labor force possesses a post-secondary qualification. Our analysis confirms previous studies showing a growth in the overall returns to schooling during the post-transition period (Brainerd 1998; Clark 2003; Vernon 2002). There was an increase in the returns to an additional year of schooling in the 1990s. The returns peaked in the early 2000s (at almost 10%), followed by a downward pattern (returns of 5.6% by 2018). The global average is about 8-9% (Psacharopoulos

**TABLE 6.1** Schooling Equations: Russia, 2018

	Females	Males
Family occupational prestige	0.0204 (6.65)	0.0237 (6.57)
Family education, years	0.111 (7.64)	0.0823 (5.01)
Permskiy Krai	-0.660 (-2.78)	-0.891 (-3.72)
Tverskaya Oblast	-0.560 (-2.31)	
Krasnoyarskiy Kray	-1.287 (-4.32)	
Rostovskaya Oblast	-0.825 (-2.74)	
Experience	-0.120 (-8.13)	-0.153 (-7.71)
Experience squared	0.00129 (4.34)	0.00198 (5.05)
Urban	0.520 (5.43)	0.795 (7.49)
Tambovskaya Oblast		-0.923 (-3.92)
Kabardino-Balkarskaya Resp		1.382 (2.40)
Constant	13.18 (55.35)	12.74 (41.77)
<i>N</i>	2222	1694
<i>adj. R</i> <sup>2</sup>	0.2266	0.2359
F-value	73.32	66.35
<i>Note:</i> t statistics in parentheses		

*Source:* RLMS

and Patrinos 2018). The extent to which the declines are due to potential "over-education" is worth investigating (Gimpelson 2019).

**TABLE 6.2** Returns to Education from Instrumental Variables: Russia, 2018

	Females	Males
Education, years	0.143	0.0798
	(8.19)	(3.43)
Experience	0.0313	0.0303
	(5.65)	(4.30)
Experience squared	-0.0006	-0.0007
	(-5.99)	(-5.61)
Urban	0.161	0.180
	(5.51)	(5.69)
Constant	7.501	8.833
	(27.00)	(26.65)
<i>N</i>	2222	1694
Centered $R^2$	0.083	0.131
Partial $R^2$ for excluded instruments in the first stage	0.105	0.093
F-test	43.63	34.43
<i>p-value</i>	0.000	0.000
Pagan-Hall for heteroskedasticity	5.780	9.973
<i>p-value</i>	0.762	0.267
Kleibergen-Paap rk LM statistic (underidentification test)	200.607	132.985
<i>p-value</i>	0.000	0.000
Sargan-Hansen J statistic (overidentification test)	10.395	20.158
<i>p-value</i>	0.065	0.0005
Hausman endogeneity test	17.243	1.099
<i>p-value</i>	0.000	0.295
Cragg-Donald Wald F statistic	43.279	34.399
Stock-Yogo critical values: 5% maximal IV relative bias	19.28	18.37
Stock-Yogo critical values: 10% maximal IV size	29.18	26.87

Note: z statistics in parentheses

Source: RLMS

Education payoffs for women are higher than those of men, but the difference appears to have narrowed in recent years. We show that the returns to education for females is higher than for males. This is consistent with global findings (Psacharopoulos and Patrinos 2018) and previous studies of the Russian labor market (Cheidvasser

and Benítez-Silva 2007; Luk'yanova 2010). When estimated separately by gender, we find trend variation. The results from estimation of earnings functions show that annual returns to higher education for males varied from 9% to 15%, whereas women's returns are described by an inverse U-shaped pattern, reaching their maximum of 28% in 2003. Within roughly the last five years, wage premiums to higher education for women have stabilized at around 12%, a couple of percentage points ahead of men. Gender-wise enrollment rates in higher education ten years later appears to match the differences in rates of return, strengthening the hypothesis that market rates of return to education in Russia do indeed influence positively the demand for schooling. Just in the past two years, the enrollment decline appears to be slowly reversing, but this phenomenon needs to be watched more closely to determine if it is merely a fluctuation or a new trend.

We show that private returns to education are three times greater for higher education compared to vocational education. On average, wage premiums to university education in Russia are roughly 3-5 times greater than to vocational schooling. This is consistent with findings from global studies and from previous research on the Russian labor market (Borisov 2007; Carnoy et al. 2012). Higher education enrollment rates increased substantially after the break-up of the Soviet Union (Belskaya, Sabirianova Peter, and Posso 2014). Enrollments peaked in 2009. Subsequent returns to higher education started to fall relative to secondary education. The latest estimate of the returns to higher education in the Russian Federation is about 8%, which is just below the EU average of about 10% and the global average of 15% (Psacharopoulos and Patrinos 2018). But the wage profiles for those with secondary and vocational education is almost flat or descending, while the gaps between higher education and vocational education are increasing, in favor of higher education.

Female education is a policy priority. It promotes earnings growth and will help reduce gender gaps in the labor market. There is a need to investigate the labor market relevance of vocational education given the low and declining returns. Higher education may have reached an expansion limit and it may be necessary to investigate options for increasing the productivity of schooling.

Future research should look at the variations in returns across regions. Also, it would be useful to estimate social returns to education in order to derive more robust policy recommendations. Finally, causal estimates of the returns to schooling should be estimated.

## References

- Akhmedjonov, Alisher. 2011. "Do higher levels of education raise earnings in post-reform Russia?" Publisher: Taylor & Francis, *Eastern European Economics* 49 (4): 47–60.
- Angrist, Joshua D., and Alan B. Keueger. 1991. "Does compulsory school attendance affect schooling and earnings?" Publisher: MIT Press, *The Quarterly Journal of Economics* 106 (4): 979–1014.
- Becker, Gary S. 2009. *Human capital: A theoretical and empirical analysis, with special reference to education*. University of Chicago press.
- Belskaya, Olga, Klara Sabirianova Peter, and Christian Posso. 2014. "College expansion and the marginal returns to education: Evidence from Russia".
- Borisov, Gleb. 2007. "The vintage effect on the Russian labor market". *Eastern European Economics* 45 (2): 23–51.
- Brainerd, Elizabeth. 1998. "Winners and losers in Russia's economic transition". *American Economic Review*: 1094–1116.



- Broecke, Stijn. 2015. "Experience and the returns to education and skill in OECD countries". *OECD Journal: Economic Studies* 2015 (1): 123–147.
- Calvo, Paula Andrea, Luis Felipe Lopez-Calva, and Josefina Posadas. 2015. *A decade of declining earnings inequality in the Russian Federation*. The World Bank.
- Card, David. 2001. "Estimating the return to schooling: Progress on some persistent econometric problems". Publisher: Wiley Online Library, *Econometrica* 69 (5): 1127–1160.
- . 1999. "The causal effect of education on earnings". In *Handbook of labor economics*, 3:1801–1863. Elsevier.
- Carnoy, Martin, et al. 2012. "The economic returns to higher education in the BRIC countries and their implications for higher education expansion". *Higher School of Economics Research Paper No. WP BRP 2*.
- Cheidvasser, Sofia, and Hugo Benitez-Silva. 2007. "The Educated Russian's Curse: Returns to Education in the Russian Federation during the 1990s". *Labour* 21 (1): 1–41.
- Clark, Andrew. 2003. "Returns to human capital investment in a transition economy: The case of Russia, 1994-1998". *Int J of Manpower* 24 (1): 11–30.
- Dudyrev, F., O. Romanova, and P. Travkin. 2018. "Employment of Vocational Graduates: Still a Slough or Already a Ford?"
- Fleisher, Belton M., Klara Sabirianova, and Xiaojun Wang. 2005. "Returns to skills and the speed of reforms: Evidence from Central and Eastern Europe, China, and Russia". *Journal of Comparative Economics* 33 (2): 351–370. <https://linkinghub.elsevier.com/retrieve/pii/S0147596705000168>.
- Gimpelson, Vladimir. 2019. "The Labor Market in Russia, 2000-2017". *IZA World of Labor*, no. 466.
- Graeser, Paul. 1988. "Human Capital in a Centrally Planned Economy: Evidence". *Kyklos* 41 (1): 75–98.
- Heckman, James J, Lance J Lochner, and Petra E Todd. 2003. *Fifty years of Mincer earnings regressions*. Tech. rep. National Bureau of Economic Research.
- Hoogerheide, Lennart, Joern H. Block, and Roy Thurik. 2012. "Family background variables as instruments for education in income regressions: A Bayesian analysis". Publisher: Elsevier, *Economics of Education Review* 31 (5): 515–523.
- Kim, Jun Sung, et al. 2019. "Returns to women's education using optimal IV selection". *Applied Economics* 51 (8): 815–830.
- Kozyreva, Polina, Mikhail Kosolapov, and Barry M. Popkin. 2016. "Data Resource Profile: The Russia Longitudinal Monitoring Survey—Higher School of Economics (RLMS-HSE) Phase II: Monitoring the Economic and Health Situation in Russia, 1994–2013". *International Journal of Epidemiology* 45 (2): 395–401.
- Kyui, Natalia. 2016. "Expansion of higher education, employment and wages: Evidence from the Russian Transition". *Labour Economics* 39:68–87.
- . 2010. "Returns to Education and Education-Occupation Mismatch within a Transition Economy. Empirical Analysis for the Russian Federation".
- Luk'yanova, Anna L'vovna. 2010. "Returns to Education: What Meta-Analysis Reveals (Otdacha Ot Obrazovaniya: CHto Pokazyvaet Meta-Analiz)". *Higher School of Economics Journal* 14 (3).
- Mincer, Jacob. 1974. "Schooling, Experience, and Earnings. Human Behavior & Social Institutions No. 2."

- Montenegro, Claudio E., and Harry Anthony Patrinos. 2014. *Comparable estimates of returns to schooling around the world*. Policy Research Working Paper Series 7020. The World Bank. <https://ideas.repec.org/p/wbk/wbrwps/7020.html>.
- Munich, Daniel, Jan Svejnar, and Katherine Terrell. 2005. "Returns to Human Capital Under The Communist Wage Grid and During the Transition to a Market Economy". *Review of Economics and Statistics* 87 (1): 100–123. issn: 0034-6535, 1530-9142.
- Muravyev, Alexander. 2008. "Human capital externalities Evidence from the transition economy of Russia 1". *Economics of Transition* 16 (3): 415–443.
- Naikal, Esther, et al. 2019. *How Wealthy is Russia? Measuring Russia's Comprehensive Wealth from 2000-2017*. World Bank. <http://documents.worldbank.org/curated/en/811321575350027422/pdf/How-Wealthy-is-Russia-Measuring-Russias-Comprehensive-Wealth-from-2000-2017.pdf>.
- Parker, Simon C., and C. Mirjam Van Praag. 2006. "Schooling, capital constraints, and entrepreneurial performance: The endogenous triangle". Publisher: Taylor & Francis, *Journal of Business & Economic Statistics* 24 (4): 416–431.
- Patrinos, Harry Anthony. 2016. "Estimating the return to schooling using the Mincer equation". *IZA World of Labor*.
- Psacharopoulos, George, and Harry Anthony Patrinos. 2018. "Returns to Investment in Education: A Decennial Review of the Global Literature". *Education Economics* 26 (5): 445–458.
- Rudakov, Victor, et al. 2019. "The Impact of Horizontal Job-Education Mismatches on the Earnings of Recent University Graduates in Russia".
- Sakellariou, Chris N., and Harry Anthony Patrinos. 2004. *Schooling and labor market impacts of a natural policy experiment*. The World Bank.
- Schultz, Theodore W. 1972. "Human capital: Policy issues and research opportunities". In *Economic Research: Retrospect and Prospect, Volume 6, Human Resources*, 1–84. NBER.
- Strumilin, S. 1924. "Khoziaistvennoe znachenie narodnovo obrazovaniia (Economic significance of national education)". translated and reprinted in English in UNESCO (1968) *Readings in the Economics of Education, Paris: UNESCO*, pp. 413-52 (Paris): 9–10.
- Telezhkina, Marina. 2019. "Massification of higher education system in Russia". *WB-HSE Summer School on the Economics of Education, July 8-12 (Moscow)*.
- Trostel, Philip, Ian Walker, and Paul Woolley. 2002. "Estimates of the economic return to schooling for 28 countries". Publisher: Elsevier, *Labour economics* 9 (1): 1–16.
- Vernon, V. 2002. "Returns to human capital in transitional Russia". *Department of Economics, The University of Texas at Austin*.

TABLE 7.1 Results of Mincer Analysis, RLMS 1994

	Total	Males	Females	Total	Males	Females
	(1)	(2)	(3)	(4)	(5)	(6)
Constant	10.704*** (10.435, 10.972)	10.974*** (10.578, 11.369)	10.319*** (9.979, 10.659)	11.569*** (11.385, 11.753)	11.947*** (11.673, 12.222)	11.132*** (10.901, 11.362)
Education, years	0.084*** (0.069, 0.098)	0.094*** (0.072, 0.115)	0.082*** (0.063, 0.101)			
Vocational education				0.114*** (0.029, 0.200)	0.135** (0.011, 0.260)	0.156*** (0.046, 0.266)
Higher education				0.489*** (0.392, 0.586)	0.549*** (0.407, 0.691)	0.501*** (0.378, 0.625)
Experience	0.030*** (0.015, 0.046)	0.023* (-0.0002, 0.046)	0.043*** (0.024, 0.062)	0.032*** (0.017, 0.048)	0.024** (0.0005, 0.047)	0.045*** (0.026, 0.065)
Experience squared	-0.001*** (-0.001, -0.0003)	-0.001** (-0.001, -0.0001)	-0.001*** (-0.001, -0.0004)	-0.001*** (-0.001, -0.0003)	-0.001** (-0.001, -0.0001)	-0.001*** (-0.001, -0.0005)
Observations	3,044	1,397	1,647	3,044	1,397	1,647
R <sup>2</sup>	0.042	0.055	0.050	0.041	0.052	0.049
Adjusted R <sup>2</sup>	0.041	0.053	0.048	0.039	0.049	0.047
Residual Std. Error	0.935	0.952	0.854	0.936	0.954	0.854
F Statistic	44.464***	27.011***	28.581***	32.271***	19.011***	21.376***
Note:	*p<0.1; **p<0.05; ***p<0.01					

TABLE 7.2 Results of Mincer Analysis, RLMS 1995

	Total	Males	Females	Total	Males	Females
	(1)	(2)	(3)	(4)	(5)	(6)
Constant	11.526*** (11.244, 11.808)	12.079*** (11.674, 12.484)	10.920*** (10.548, 11.291)	12.362*** (12.172, 12.551)	12.844*** (12.566, 13.121)	11.835*** (11.587, 12.082)
Education, years	0.078*** (0.062, 0.094)	0.073*** (0.050, 0.096)	0.089*** (0.068, 0.109)			
Vocational education				0.052 (-0.038, 0.142)	0.062 (-0.067, 0.190)	0.111* (-0.009, 0.230)
Higher education				0.418*** (0.319, 0.518)	0.393*** (0.251, 0.534)	0.498*** (0.366, 0.631)
Experience	0.030*** (0.014, 0.045)	0.010 (-0.013, 0.033)	0.053*** (0.032, 0.073)	0.032*** (0.016, 0.048)	0.012 (-0.011, 0.035)	0.055*** (0.034, 0.075)
Experience squared	-0.001*** (-0.001, -0.0003)	-0.0003 (-0.001, 0.0002)	-0.001*** (-0.001, -0.001)	-0.001*** (-0.001, -0.0004)	-0.0004 (-0.001, 0.0001)	-0.001*** (-0.002, -0.001)
Observations	2,694	1,238	1,456	2,694	1,238	1,456
R <sup>2</sup>	0.038	0.036	0.057	0.039	0.036	0.058
Adjusted R <sup>2</sup>	0.037	0.034	0.055	0.037	0.033	0.055
Residual Std. Error	0.919	0.920	0.866	0.919	0.920	0.866
F Statistic	35.479***	15.338***	29.289***	27.160***	11.401***	22.178***
Note:	*p<0.1; **p<0.05; ***p<0.01					

TABLE 7.3 Results of Mincer Analysis, RLMS 1996

	Total	Males	Females	Total	Males	Females
	(1)	(2)	(3)	(4)	(5)	(6)
Constant	12.268*** (11.947, 12.590)	12.539*** (12.066, 13.013)	11.814*** (11.401, 12.227)	12.991*** (12.775, 13.206)	13.306*** (12.987, 13.625)	12.568*** (12.292, 12.843)
Education, years	0.071*** (0.052, 0.089)	0.076*** (0.049, 0.103)	0.074*** (0.051, 0.098)			
Vocational education				0.104* (-0.002, 0.210)	0.130 (-0.026, 0.286)	0.126* (-0.010, 0.261)
Higher education				0.380*** (0.265, 0.496)	0.403*** (0.232, 0.574)	0.412*** (0.265, 0.560)
Experience	0.003 (-0.015, 0.020)	-0.001 (-0.027, 0.025)	0.018 (-0.005, 0.040)	0.005 (-0.013, 0.022)	0.001 (-0.025, 0.027)	0.019* (-0.003, 0.042)
Experience squared	-0.0001 (-0.001, 0.0002)	-0.0001 (-0.001, 0.0004)	-0.0004 (-0.001, 0.0001)	-0.0002 (-0.001, 0.0002)	-0.0002 (-0.001, 0.0004)	-0.0004* (-0.001, 0.0001)
Observations	2,282	1,034	1,248	2,282	1,034	1,248
R <sup>2</sup>	0.029	0.037	0.033	0.026	0.032	0.031
Adjusted R <sup>2</sup>	0.027	0.035	0.031	0.024	0.028	0.028
Residual Std. Error	0.958	0.974	0.886	0.959	0.977	0.887
F Statistic	22.443***	13.324***	14.098***	15.319***	8.574***	9.880***
Note:	*p<0.1; ** p<0.05; *** p<0.01					

TABLE 7.4 Results of Mincer Analysis, RLMS 1998

	Total	Males	Females	Total	Males	Females
	(1)	(2)	(3)	(4)	(5)	(6)
Constant	5.118*** (4.885, 5.350)	5.425*** (5.090, 5.760)	4.564*** (4.267, 4.861)	5.963*** (5.805, 6.120)	6.338*** (6.106, 6.571)	5.502*** (5.303, 5.700)
Education, years	0.088*** (0.075, 0.101)	0.095*** (0.076, 0.114)	0.099*** (0.083, 0.116)			
Vocational education				0.177*** (0.102, 0.252)	0.175*** (0.070, 0.280)	0.257*** (0.158, 0.355)
Higher education				0.528*** (0.444, 0.613)	0.556*** (0.435, 0.677)	0.615*** (0.506, 0.725)
Experience	0.024*** (0.012, 0.037)	0.013 (-0.005, 0.032)	0.041*** (0.025, 0.057)	0.028*** (0.015, 0.040)	0.018* (-0.001, 0.037)	0.043*** (0.027, 0.059)
Experience squared	-0.001*** (-0.001, -0.0003)	-0.0004* (-0.001, 0.00003)	-0.001*** (-0.001, -0.0001)	-0.001*** (-0.001, -0.0003)	-0.0005** (-0.001, -0.0001)	-0.001*** (-0.001, -0.001)
Observations	3,102	1,434	1,668	3,102	1,434	1,668
R <sup>2</sup>	0.057	0.069	0.085	0.058	0.067	0.085
Adjusted R <sup>2</sup>	0.056	0.067	0.083	0.057	0.064	0.083
Residual Std. Error	0.800	0.803	0.730	0.800	0.804	0.730
F Statistic	62.558***	35.348***	51.380***	47.536***	25.536***	38.668***
Note:	*p<0.1; **p<0.05; ***p<0.01					

TABLE 7.5 Results of Mincer Analysis, RLMS 2000

	Total	Males	Females	Total	Males	Females
	(1)	(2)	(3)	(4)	(5)	(6)
Constant	5.834*** (5.591, 6.077)	6.311*** (5.966, 6.655)	5.023*** (4.710, 5.336)	6.700*** (6.543, 6.857)	7.183*** (6.961, 7.405)	6.072*** (5.869, 6.276)
Education, years	0.087*** (0.072, 0.101)	0.086*** (0.065, 0.106)	0.110*** (0.092, 0.128)			
Vocational education				0.153*** (0.073, 0.233)	0.118** (0.008, 0.228)	0.283*** (0.178, 0.388)
Higher education				0.488*** (0.398, 0.577)	0.450*** (0.323, 0.578)	0.668*** (0.553, 0.784)
Experience	0.019*** (0.006, 0.032)	0.006 (-0.012, 0.025)	0.041*** (0.024, 0.057)	0.021*** (0.008, 0.034)	0.009 (-0.009, 0.028)	0.042*** (0.025, 0.058)
Experience squared	-0.0004*** (-0.001, -0.0001)	-0.0002 (-0.001, 0.0001)	-0.001*** (-0.001, -0.0004)	-0.0005*** (-0.001, -0.0002)	-0.0003* (-0.001, 0.0001)	-0.001*** (-0.001, -0.0005)
Observations	3,215	1,477	1,738	3,215	1,477	1,738
R <sup>2</sup>	0.047	0.053	0.084	0.044	0.047	0.082
Adjusted R <sup>2</sup>	0.046	0.051	0.082	0.043	0.044	0.080
Residual Std. Error	0.867	0.856	0.796	0.869	0.859	0.797
F Statistic	52.584***	27.384***	53.004***	36.873***	17.961***	38.813***
Note:	*p<0.1; **p<0.05; ***p<0.01					

TABLE 7.6 Results of Mincer Analysis, RLMS 2001

	Total	Males	Females	Total	Males	Females
	(1)	(2)	(3)	(4)	(5)	(6)
Constant	6.343*** (6.120, 6.566)	6.648*** (6.329, 6.968)	5.647*** (5.355, 5.939)	7.287*** (7.143, 7.430)	7.592*** (7.389, 7.795)	6.758*** (6.569, 6.947)
Education, years	0.093*** (0.080, 0.106)	0.092*** (0.073, 0.111)	0.116*** (0.099, 0.132)			
Vocational education				0.144*** (0.070, 0.218)	0.111** (0.008, 0.213)	0.293*** (0.193, 0.393)
Higher education				0.519*** (0.438, 0.600)	0.496*** (0.380, 0.612)	0.711*** (0.603, 0.819)
Experience	0.001 (-0.011, 0.013)	0.001 (-0.016, 0.018)	0.013 (-0.003, 0.029)	0.003 (-0.009, 0.015)	0.004 (-0.014, 0.021)	0.013 (-0.003, 0.029)
Experience squared	-0.0001 (-0.0003, 0.0002)	-0.0001 (-0.0005, 0.0002)	-0.0002 (-0.001, 0.0001)	-0.0001 (-0.0004, 0.0001)	-0.0002 (-0.001, 0.0002)	-0.0002 (-0.001, 0.0001)
Observations	3,605	1,673	1,932	3,605	1,673	1,932
R <sup>2</sup>	0.057	0.060	0.090	0.056	0.057	0.092
Adjusted R <sup>2</sup>	0.056	0.058	0.088	0.054	0.055	0.090
Residual Std. Error	0.844	0.851	0.774	0.844	0.852	0.773
F Statistic	72.009***	35.323***	63.474***	52.935***	25.340***	48.998***
Note:	* p<0.1; ** p<0.05; *** p<0.01					



TABLE 7.7 Results of Mincer Analysis, RLMS 2002

	Total	Males	Females	Total	Males	Females
	(1)	(2)	(3)	(4)	(5)	(6)
Constant	6.547*** (6.346, 6.748)	6.852*** (6.567, 7.137)	5.884*** (5.620, 6.147)	7.469*** (7.340, 7.598)	7.795*** (7.614, 7.976)	6.957*** (6.785, 7.129)
Education, years	0.092*** (0.080, 0.104)	0.093*** (0.076, 0.111)	0.113*** (0.098, 0.128)			
Vocational education				0.147*** (0.080, 0.214)	0.120** (0.028, 0.211)	0.283*** (0.192, 0.374)
Higher education				0.511*** (0.437, 0.584)	0.498*** (0.394, 0.602)	0.686*** (0.588, 0.784)
Experience	0.015*** (0.005, 0.026)	0.012 (-0.003, 0.028)	0.028*** (0.014, 0.042)	0.018*** (0.007, 0.029)	0.016** (0.001, 0.032)	0.029*** (0.014, 0.043)
Experience squared	-0.0003*** (-0.001, -0.0001)	-0.0004** (-0.001, -0.0001)	-0.0005*** (-0.001, -0.0002)	-0.0004*** (-0.001, -0.0002)	-0.0005*** (-0.001, -0.0001)	-0.0005*** (-0.001, -0.0002)
Observations	3,803	1,748	2,055	3,803	1,748	2,055
R <sup>2</sup>	0.062	0.072	0.098	0.060	0.068	0.099
Adjusted R <sup>2</sup>	0.061	0.071	0.097	0.059	0.066	0.097
Residual Std. Error	0.777	0.770	0.722	0.778	0.771	0.722
F Statistic	84.039***	45.377***	74.224***	60.863***	31.968***	56.066***
Note:	*p<0.1; **p<0.05; ***p<0.01					

TABLE 7.8 Results of Mincer Analysis, RLMS 2003

	Total	Males	Females	Total	Males	Females
	(1)	(2)	(3)	(4)	(5)	(6)
Constant	6.779*** (6.578, 6.979)	7.204*** (6.922, 7.486)	6.054*** (5.793, 6.315)	7.695*** (7.567, 7.824)	8.127*** (7.945, 8.308)	7.167*** (7.001, 7.333)
Education, years	0.093*** (0.081, 0.104)	0.089*** (0.073, 0.106)	0.119*** (0.104, 0.134)			
Vocational education				0.169*** (0.102, 0.237)	0.114** (0.023, 0.204)	0.323*** (0.232, 0.414)
Higher education				0.520*** (0.447, 0.594)	0.456*** (0.353, 0.558)	0.740*** (0.642, 0.838)
Experience	0.016*** (0.005, 0.026)	0.009 (-0.007, 0.024)	0.025*** (0.011, 0.038)	0.018*** (0.007, 0.029)	0.011 (-0.005, 0.027)	0.025*** (0.011, 0.039)
Experience squared	-0.0004*** (-0.001, -0.0002)	-0.0004** (-0.001, -0.00002)	-0.0005*** (-0.001, -0.0002)	-0.0004*** (-0.001, -0.0002)	-0.0004** (-0.001, -0.0001)	-0.0005*** (-0.001, -0.0002)
Observations	3,858	1,765	2,093	3,858	1,765	2,093
R <sup>2</sup>	0.068	0.078	0.107	0.065	0.069	0.110
Adjusted R <sup>2</sup>	0.067	0.077	0.106	0.064	0.067	0.108
Residual Std. Error	0.782	0.753	0.732	0.783	0.757	0.731
F Statistic	93.289***	49.918***	83.800***	66.602***	32.690***	64.384***
Note:	* p<0.1; ** p<0.05; *** p<0.01					

TABLE 7.9 Results of Mincer Analysis, RLMS 2004

	Total	Males	Females	Total	Males	Females
	(1)	(2)	(3)	(4)	(5)	(6)
Constant	7.181*** (6.990, 7.371)	7.559*** (7.293, 7.825)	6.437*** (6.191, 6.683)	8.053*** (7.931, 8.174)	8.404*** (8.233, 8.574)	7.553*** (7.397, 7.710)
Education, years	0.085*** (0.074, 0.096)	0.084*** (0.068, 0.099)	0.111*** (0.097, 0.125)			
Vocational education				0.105*** (0.041, 0.170)	0.135*** (0.050, 0.221)	0.180*** (0.093, 0.267)
Higher education				0.445*** (0.374, 0.516)	0.443*** (0.345, 0.540)	0.610*** (0.516, 0.704)
Experience	0.011** (0.0003, 0.021)	0.005 (-0.009, 0.020)	0.022*** (0.009, 0.035)	0.013** (0.003, 0.023)	0.007 (-0.007, 0.022)	0.024*** (0.011, 0.038)
Experience squared	-0.0003*** (-0.001, -0.0001)	-0.0003* (-0.001, 0.00000)	-0.0005*** (-0.001, -0.0002)	-0.0004*** (-0.001, -0.0002)	-0.0004*** (-0.001, -0.00005)	-0.001*** (-0.001, -0.0002)
Observations	3,968	1,824	2,144	3,968	1,824	2,144
R <sup>2</sup>	0.068	0.084	0.106	0.063	0.075	0.101
Adjusted R <sup>2</sup>	0.067	0.083	0.105	0.062	0.073	0.099
Residual Std. Error	0.748	0.720	0.690	0.750	0.724	0.693
F Statistic	96.254***	55.701***	84.918***	66.116***	36.626***	59.781***
Note:	* p<0.1; ** p<0.05; *** p<0.01					

TABLE 7.10 Results of Mincer Analysis, RLMS 2005

	Total	Males	Females	Total	Males	Females
	(1)	(2)	(3)	(4)	(5)	(6)
Constant	7.541*** (7.352, 7.731)	7.969*** (7.703, 8.235)	6.729*** (6.485, 6.972)	8.374*** (8.255, 8.494)	8.722*** (8.555, 8.890)	7.868*** (7.715, 8.021)
Education, years	0.081*** (0.069, 0.092)	0.074*** (0.059, 0.090)	0.113*** (0.099, 0.127)			
Vocational education				0.083** (0.019, 0.147)	0.110** (0.026, 0.195)	0.189*** (0.101, 0.277)
Higher education				0.421*** (0.351, 0.492)	0.388*** (0.291, 0.484)	0.640*** (0.546, 0.734)
Experience	0.001 (-0.008, 0.011)	-0.004 (-0.018, 0.010)	0.011* (-0.001, 0.024)	0.004 (-0.006, 0.014)	-0.002 (-0.016, 0.013)	0.013** (0.0004, 0.025)
Experience squared	-0.0001 (-0.0004, 0.0001)	-0.0001 (-0.0004, 0.0002)	-0.0003* (-0.001, 0.000001)	-0.0002* (-0.0004, 0.000001)	-0.0001 (-0.0004, 0.0002)	-0.0003** (-0.001, -0.000001)
Observations	3,913	1,801	2,112	3,913	1,801	2,112
R <sup>2</sup>	0.065	0.069	0.116	0.062	0.061	0.113
Adjusted R <sup>2</sup>	0.064	0.067	0.114	0.061	0.059	0.111
Residual Std. Error	0.744	0.716	0.685	0.745	0.719	0.686
F Statistic	89.991***	44.143***	91.939***	64.154***	29.157***	67.046***
Note:	*p<0.1; **p<0.05; ***p<0.01					

TABLE 7.11 Results of Mincer Analysis, RLMS 2006

	Total	Males	Females	Total	Males	Females
	(1)	(2)	(3)	(4)	(5)	(6)
Constant	7.764*** (7.601, 7.926)	8.149*** (7.917, 8.381)	7.011*** (6.804, 7.218)	8.596*** (8.492, 8.700)	8.878*** (8.729, 9.026)	8.173*** (8.039, 8.306)
Education, years	0.080*** (0.071, 0.090)	0.072*** (0.058, 0.085)	0.114*** (0.102, 0.126)			
Vocational education				0.081*** (0.026, 0.137)	0.090** (0.016, 0.164)	0.196*** (0.119, 0.274)
Higher education				0.443*** (0.381, 0.504)	0.397*** (0.312, 0.482)	0.658*** (0.575, 0.741)
Experience	0.003 (-0.005, 0.012)	0.003 (-0.010, 0.016)	0.010* (-0.001, 0.021)	0.005 (-0.003, 0.014)	0.005 (-0.008, 0.017)	0.010* (-0.001, 0.021)
Experience squared	-0.0002** (-0.0004, -0.00004)	-0.0002* (-0.001, 0.00002)	-0.0003** (-0.001, -0.0001)	-0.0003*** (-0.0005, -0.0001)	-0.0003** (-0.001, -0.00002)	-0.0003** (-0.001, -0.0001)
Observations	4,804	2,172	2,632	4,804	2,172	2,632
R <sup>2</sup>	0.078	0.074	0.140	0.078	0.072	0.134
Adjusted R <sup>2</sup>	0.077	0.073	0.139	0.077	0.070	0.132
Residual Std. Error	0.715	0.688	0.664	0.715	0.689	0.666
F Statistic	135.305***	58.011***	142.254***	101.846***	41.810***	101.410***

\*p&lt;0.1; \*\*p&lt;0.05; \*\*\*p&lt;0.01

TABLE 7.12 Results of Mincer Analysis, RLMS 2007

	Total	Males	Females	Total	Males	Females
	(1)	(2)	(3)	(4)	(5)	(6)
Constant	8.165*** (8.009, 8.320)	8.530*** (8.312, 8.747)	7.461*** (7.258, 7.663)	8.840*** (8.742, 8.939)	9.099*** (8.961, 9.237)	8.461*** (8.333, 8.588)
Education, years	0.066*** (0.057, 0.075)	0.058*** (0.045, 0.070)	0.097*** (0.085, 0.108)			
Vocational education				0.083*** (0.030, 0.135)	0.136*** (0.068, 0.204)	0.138*** (0.064, 0.211)
Higher education				0.370*** (0.312, 0.427)	0.334*** (0.256, 0.413)	0.543*** (0.465, 0.622)
Experience	0.004 (-0.004, 0.013)	0.003 (-0.009, 0.014)	0.011** (0.001, 0.022)	0.005 (-0.003, 0.014)	0.002 (-0.010, 0.014)	0.012** (0.002, 0.023)
Experience squared	-0.0003*** (-0.0004, -0.0001)	-0.0003** (-0.0005, -0.0001)	-0.0003*** (-0.001, -0.0001)	-0.0003*** (-0.0005, -0.0001)	-0.0002* (-0.0005, 0.00001)	-0.0004*** (-0.001, -0.0001)
Observations	4,726	2,153	2,573	4,726	2,153	2,573
R <sup>2</sup>	0.070	0.070	0.121	0.070	0.066	0.119
Adjusted R <sup>2</sup>	0.069	0.069	0.120	0.069	0.064	0.118
Residual Std. Error	0.670	0.634	0.633	0.670	0.635	0.634
F Statistic	118.364***	54.316***	117.362***	88.551***	38.060***	86.643***
Note:	* p<0.1; ** p<0.05; *** p<0.01					

TABLE 7.13 Results of Mincer Analysis, RLMS 2008

	Total	Males	Females	Total	Males	Females
	(1)	(2)	(3)	(4)	(5)	(6)
Constant	8.134*** (7.969, 8.299)	8.412*** (8.178, 8.646)	7.473*** (7.260, 7.686)	8.918*** (8.814, 9.022)	9.146*** (9.000, 9.292)	8.549*** (8.414, 8.684)
Education, years	0.079*** (0.069, 0.088)	0.077*** (0.063, 0.090)	0.108*** (0.096, 0.120)			
Vocational education				0.097*** (0.041, 0.153)	0.133*** (0.060, 0.206)	0.178*** (0.099, 0.257)
Higher education				0.443*** (0.382, 0.504)	0.453*** (0.370, 0.537)	0.608*** (0.524, 0.692)
Experience	0.016*** (0.007, 0.024)	0.018*** (0.006, 0.031)	0.018*** (0.008, 0.029)	0.018*** (0.010, 0.027)	0.021*** (0.008, 0.033)	0.020*** (0.009, 0.031)
Experience squared	-0.0005*** (-0.001, -0.0003)	-0.001*** (-0.001, -0.0003)	-0.0005*** (-0.001, -0.0002)	-0.001*** (-0.001, -0.0004)	-0.001*** (-0.001, -0.0004)	-0.001*** (-0.001, -0.0003)
Observations	4,827	2,170	2,657	4,827	2,170	2,657
R <sup>2</sup>	0.083	0.096	0.126	0.083	0.097	0.119
Adjusted R <sup>2</sup>	0.083	0.095	0.125	0.082	0.095	0.117
Residual Std. Error	0.714	0.673	0.678	0.714	0.673	0.681
F Statistic	145.798***	76.757***	128.012***	109.483***	58.016***	89.328***

Note: \*p<0.1; \*\*p<0.05; \*\*\*p<0.01

TABLE 7.14 Results of Mincer Analysis, RLMS 2009

	Total	Males	Females	Total	Males	Females
	(1)	(2)	(3)	(4)	(5)	(6)
Constant	8.171*** (8.013, 8.329)	8.539*** (8.320, 8.757)	7.416*** (7.208, 7.624)	8.928*** (8.829, 9.028)	9.208*** (9.071, 9.345)	8.510*** (8.379, 8.641)
Education, years	0.076*** (0.067, 0.085)	0.069*** (0.056, 0.082)	0.108*** (0.097, 0.120)			
Vocational education				0.092*** (0.037, 0.147)	0.097*** (0.026, 0.168)	0.176*** (0.099, 0.253)
Higher education				0.422*** (0.363, 0.482)	0.403*** (0.323, 0.483)	0.599*** (0.517, 0.680)
Experience	0.020*** (0.012, 0.028)	0.018*** (0.007, 0.030)	0.028*** (0.018, 0.038)	0.022*** (0.014, 0.030)	0.021*** (0.009, 0.032)	0.029*** (0.019, 0.040)
Experience squared	-0.001*** (-0.001, -0.0004)	-0.001*** (-0.001, -0.0003)	-0.001*** (-0.001, -0.0004)	-0.001*** (-0.001, -0.0004)	-0.001*** (-0.001, -0.0004)	-0.001*** (-0.001, -0.0004)
Observations	4,804	2,146	2,658	4,804	2,146	2,658
R <sup>2</sup>	0.079	0.088	0.129	0.078	0.089	0.119
Adjusted R <sup>2</sup>	0.078	0.087	0.128	0.078	0.087	0.117
Residual Std. Error	0.681	0.633	0.651	0.681	0.633	0.655
F Statistic	136.792***	69.007***	131.128***	101.881***	52.357***	89.175***
Note:	*p<0.1; **p<0.05; ***p<0.01					



TABLE 7.15 Results of Mincer Analysis, RLMS 2010

	Total	Males	Females	Total	Males	Females
	(1)	(2)	(3)	(4)	(5)	(6)
Constant	8.405*** (8.280, 8.530)	8.622*** (8.444, 8.800)	7.791*** (7.628, 7.955)	9.149*** (9.072, 9.227)	9.327*** (9.216, 9.438)	8.811*** (8.710, 8.912)
Education, years	0.071*** (0.064, 0.078)	0.070*** (0.060, 0.080)	0.096*** (0.087, 0.105)			
Vocational education				0.058*** (0.015, 0.102)	0.106*** (0.048, 0.164)	0.116*** (0.055, 0.177)
Higher education				0.382*** (0.335, 0.429)	0.407*** (0.342, 0.472)	0.517*** (0.453, 0.582)
Experience	0.012*** (0.006, 0.019)	0.017*** (0.008, 0.026)	0.016*** (0.008, 0.024)	0.014*** (0.007, 0.020)	0.018*** (0.009, 0.028)	0.016*** (0.008, 0.024)
Experience squared	-0.0004*** (-0.001, -0.0003)	-0.001*** (-0.001, -0.0004)	-0.0004*** (-0.001, -0.0002)	-0.0004*** (-0.001, -0.0003)	-0.001*** (-0.001, -0.0004)	-0.0004*** (-0.001, -0.0002)
Observations	7,326	3,319	4,007	7,326	3,319	4,007
R <sup>2</sup>	0.077	0.094	0.114	0.077	0.093	0.108
Adjusted R <sup>2</sup>	0.076	0.094	0.113	0.076	0.092	0.107
Residual Std. Error	0.672	0.650	0.630	0.672	0.650	0.632
F Statistic	202.833***	115.111***	171.338***	152.272***	84.770***	120.673***
Note:	*p<0.1; **p<0.05; ***p<0.01					

TABLE 7.16 Results of Mincer Analysis, RLMS 2011

	Total	Males	Females	Total	Males	Females
	(1)	(2)	(3)	(4)	(5)	(6)
Constant	8.575*** (8.451, 8.698)	8.683*** (8.517, 8.850)	7.982*** (7.818, 8.145)	9.311*** (9.235, 9.386)	9.455*** (9.354, 9.557)	8.973*** (8.872, 9.074)
Education, years	0.067*** (0.060, 0.074)	0.074*** (0.065, 0.084)	0.090*** (0.081, 0.099)			
Vocational education				0.010 (-0.032, 0.052)	0.087*** (0.034, 0.139)	0.042 (-0.018, 0.102)
Higher education				0.330*** (0.285, 0.375)	0.404*** (0.345, 0.464)	0.440*** (0.376, 0.503)
Experience	0.013*** (0.007, 0.020)	0.020*** (0.012, 0.029)	0.016*** (0.009, 0.024)	0.015*** (0.009, 0.021)	0.021*** (0.012, 0.030)	0.018*** (0.010, 0.026)
Experience squared	-0.0005*** (-0.001, -0.0003)	-0.001*** (-0.001, -0.0005)	-0.0004*** (-0.001, -0.0003)	-0.0005*** (-0.001, -0.0004)	-0.001*** (-0.001, -0.0005)	-0.0005*** (-0.001, -0.0003)
Observations	7,167	3,271	3,896	7,167	3,271	3,896
R <sup>2</sup>	0.088	0.125	0.114	0.087	0.120	0.108
Adjusted R <sup>2</sup>	0.087	0.125	0.113	0.086	0.119	0.107
Residual Std. Error	0.649	0.596	0.619	0.649	0.598	0.621
F Statistic	229.118***	156.109***	167.175***	170.503***	111.194***	118.283***
Note:	*p<0.1; **p<0.05; ***p<0.01					

TABLE 7.17 Results of Mincer Analysis, RLMS 2012

	Total	Males	Females	Total	Males	Females
	(1)	(2)	(3)	(4)	(5)	(6)
Constant	8.787*** (8.665, 8.908)	8.905*** (8.743, 9.067)	8.163*** (8.002, 8.325)	9.458*** (9.383, 9.533)	9.610*** (9.510, 9.710)	9.108*** (9.008, 9.209)
Education, years	0.061*** (0.054, 0.068)	0.068*** (0.059, 0.077)	0.085*** (0.076, 0.094)			
Vocational education				-0.006 (-0.048, 0.036)	0.081*** (0.030, 0.133)	0.016 (-0.044, 0.076)
Higher education				0.300*** (0.255, 0.345)	0.378*** (0.320, 0.436)	0.412*** (0.349, 0.475)
Experience	0.017*** (0.011, 0.023)	0.027*** (0.019, 0.036)	0.018*** (0.011, 0.026)	0.018*** (0.012, 0.024)	0.027*** (0.019, 0.035)	0.020*** (0.012, 0.028)
Experience squared	-0.001*** (-0.001, -0.0004)	-0.001*** (-0.001, -0.001)	-0.0005*** (-0.001, -0.0003)	-0.001*** (-0.001, -0.0005)	-0.001*** (-0.001, -0.001)	-0.0005*** (-0.001, -0.0003)
Observations	7,428	3,367	4,061	7,428	3,367	4,061
R <sup>2</sup>	0.088	0.153	0.104	0.088	0.149	0.100
Adjusted R <sup>2</sup>	0.087	0.152	0.103	0.088	0.148	0.099
Residual Std. Error	0.666	0.598	0.640	0.666	0.599	0.642
F Statistic	237.681***	202.747***	156.563***	179.607***	146.920***	112.228***
Note:	*p<0.1; **p<0.05; ***p<0.01					

TABLE 7.18 Results of Mincer Analysis, RLMS 2013

	Total	Males	Females	Total	Males	Females
	(1)	(2)	(3)	(4)	(5)	(6)
Constant	8.793*** (8.669, 8.916)	9.037*** (8.868, 9.206)	8.082*** (7.919, 8.245)	9.502*** (9.425, 9.578)	9.721*** (9.618, 9.825)	9.095*** (8.992, 9.197)
Education, years	0.065*** (0.058, 0.072)	0.065*** (0.056, 0.075)	0.095*** (0.086, 0.104)			
Vocational education				0.011 (-0.031, 0.054)	0.049* (-0.004, 0.102)	0.083*** (0.021, 0.145)
Higher education				0.327*** (0.281, 0.373)	0.351*** (0.290, 0.412)	0.500*** (0.435, 0.564)
Experience	0.019*** (0.013, 0.025)	0.022*** (0.013, 0.030)	0.023*** (0.016, 0.031)	0.020*** (0.014, 0.026)	0.023*** (0.015, 0.032)	0.024*** (0.016, 0.032)
Experience squared	-0.001*** (-0.001, -0.0005)	-0.001*** (-0.001, -0.001)	-0.001*** (-0.001, -0.0004)	-0.001*** (-0.001, -0.0005)	-0.001*** (-0.001, -0.001)	-0.001*** (-0.001, -0.0004)
Observations	7,327	3,361	3,966	7,327	3,361	3,966
R <sup>2</sup>	0.092	0.134	0.124	0.093	0.133	0.121
Adjusted R <sup>2</sup>	0.092	0.134	0.123	0.093	0.132	0.120
Residual Std. Error	0.656	0.607	0.627	0.656	0.608	0.628
F Statistic	247.871***	173.841***	186.948***	188.225***	128.699***	135.959***
Note:	*p<0.1; **p<0.05; ***p<0.01					

TABLE 7.19 Results of Mincer Analysis, RLMS 2014

	Total	Males	Females	Total	Males	Females
	(1)	(2)	(3)	(4)	(5)	(6)
Constant	8.823*** (8.691, 8.955)	8.998*** (8.811, 9.185)	8.170*** (7.997, 8.342)	9.576*** (9.494, 9.659)	9.738*** (9.622, 9.854)	9.226*** (9.118, 9.335)
Education, years	0.068*** (0.061, 0.076)	0.070*** (0.060, 0.081)	0.097*** (0.087, 0.106)			
Vocational education				0.009 (-0.037, 0.055)	0.058* (-0.001, 0.118)	0.069** (0.003, 0.135)
Higher education				0.334*** (0.285, 0.383)	0.378*** (0.311, 0.445)	0.487*** (0.419, 0.556)
Experience	0.021*** (0.014, 0.027)	0.025*** (0.016, 0.035)	0.024*** (0.016, 0.033)	0.022*** (0.015, 0.028)	0.027*** (0.017, 0.036)	0.024*** (0.016, 0.032)
Experience squared	-0.001*** (-0.001, -0.0005)	-0.001*** (-0.001, -0.001)	-0.001*** (-0.001, -0.0004)	-0.001*** (-0.001, -0.0005)	-0.001*** (-0.001, -0.001)	-0.001*** (-0.001, -0.0004)
Observations	6,148	2,795	3,353	6,148	2,795	3,353
R <sup>2</sup>	0.094	0.124	0.134	0.094	0.121	0.128
Adjusted R <sup>2</sup>	0.094	0.123	0.133	0.093	0.120	0.127
Residual Std. Error	0.640	0.612	0.600	0.640	0.613	0.602
F Statistic	212.520***	131.812***	173.006***	159.197***	96.383***	122.801***
Note:	*p<0.1; **p<0.05; ***p<0.01					

TABLE 7.20 Results of Mincer Analysis, RLMS 2015

	Total	Males	Females	Total	Males	Females
	(1)	(2)	(3)	(4)	(5)	(6)
Constant	9.043*** (8.913, 9.173)	9.111*** (8.936, 9.287)	8.460*** (8.286, 8.634)	9.652*** (9.571, 9.732)	9.760*** (9.652, 9.869)	9.343*** (9.234, 9.453)
Education, years	0.057*** (0.050, 0.065)	0.066*** (0.056, 0.076)	0.081*** (0.072, 0.091)			
Vocational education				0.017 (-0.030, 0.063)	0.091*** (0.034, 0.147)	0.056 (-0.013, 0.126)
Higher education				0.296*** (0.247, 0.345)	0.381*** (0.318, 0.444)	0.413*** (0.342, 0.484)
Experience	0.018*** (0.012, 0.024)	0.025*** (0.016, 0.033)	0.020*** (0.011, 0.028)	0.019*** (0.013, 0.026)	0.027*** (0.018, 0.035)	0.019*** (0.011, 0.028)
Experience squared	-0.001*** (-0.001, -0.0004)	-0.001*** (-0.001, -0.001)	-0.0005*** (-0.001, -0.0003)	-0.001*** (-0.001, -0.0004)	-0.001*** (-0.001, -0.001)	-0.0005*** (-0.001, -0.0003)
Observations	6,231	2,844	3,387	6,231	2,844	3,387
R <sup>2</sup>	0.084	0.132	0.104	0.086	0.133	0.102
Adjusted R <sup>2</sup>	0.083	0.131	0.103	0.086	0.131	0.100
Residual Std. Error	0.627	0.574	0.604	0.626	0.574	0.604
F Statistic	189.226***	144.439***	130.774***	147.039***	108.570***	95.552***
Note:	*p<0.1; **p<0.05; ***p<0.01					

TABLE 7.21 Results of Mincer Analysis, RLMS 2016

	Total	Males	Females	Total	Males	Females
	(1)	(2)	(3)	(4)	(5)	(6)
Constant	8.974*** (8.840, 9.107)	9.142*** (8.965, 9.319)	8.343*** (8.160, 8.526)	9.655*** (9.572, 9.739)	9.856*** (9.746, 9.966)	9.290*** (9.173, 9.407)
Education, years	0.061*** (0.054, 0.068)	0.067*** (0.057, 0.077)	0.085*** (0.075, 0.096)			
Vocational education				-0.006 (-0.054, 0.043)	0.038 (-0.020, 0.097)	0.039 (-0.034, 0.112)
Higher education				0.286*** (0.236, 0.337)	0.336*** (0.272, 0.400)	0.413*** (0.339, 0.487)
Experience	0.022*** (0.016, 0.029)	0.023*** (0.014, 0.031)	0.028*** (0.019, 0.036)	0.023*** (0.017, 0.030)	0.023*** (0.015, 0.032)	0.028*** (0.019, 0.036)
Experience squared	-0.001*** (-0.001, -0.0005)	-0.001*** (-0.001, -0.0005)	-0.001*** (-0.001, -0.0004)	-0.001*** (-0.001, -0.0005)	-0.001*** (-0.001, -0.0005)	-0.001*** (-0.001, -0.0004)
Observations	6,297	2,905	3,392	6,297	2,905	3,392
R <sup>2</sup>	0.074	0.117	0.095	0.074	0.112	0.090
Adjusted R <sup>2</sup>	0.074	0.116	0.094	0.074	0.111	0.089
Residual Std. Error	0.644	0.580	0.636	0.644	0.582	0.638
F Statistic	168.712***	128.263***	118.501***	126.208***	91.747***	83.562***
Note:	*p<0.1; **p<0.05; ***p<0.01					

TABLE 7.22 Results of Mincer Analysis, RLMS 2017

	Total	Males	Females	Total	Males	Females
	(1)	(2)	(3)	(4)	(5)	(6)
Constant	9.171*** (9.035, 9.306)	9.227*** (9.054, 9.400)	8.605*** (8.415, 8.795)	9.757*** (9.671, 9.844)	9.924*** (9.815, 10.033)	9.407*** (9.284, 9.530)
Education, years	0.054*** (0.046, 0.061)	0.066*** (0.056, 0.076)	0.074*** (0.064, 0.085)			
Vocational education				0.007 (-0.043, 0.057)	0.051* (-0.006, 0.108)	0.065* (-0.012, 0.142)
Higher education				0.264*** (0.212, 0.317)	0.345*** (0.282, 0.409)	0.388*** (0.309, 0.466)
Experience	0.019*** (0.012, 0.025)	0.021*** (0.013, 0.030)	0.022*** (0.013, 0.031)	0.019*** (0.013, 0.026)	0.022*** (0.013, 0.031)	0.021*** (0.012, 0.030)
Experience squared	-0.001*** (-0.001, -0.0004)	-0.001*** (-0.001, -0.0004)	-0.001*** (-0.001, -0.0003)	-0.001*** (-0.001, -0.0004)	-0.001*** (-0.001, -0.0004)	-0.0005*** (-0.001, -0.0003)
Observations	6,359	2,947	3,412	6,359	2,947	3,412
R <sup>2</sup>	0.065	0.117	0.075	0.066	0.113	0.073
Adjusted R <sup>2</sup>	0.065	0.116	0.074	0.066	0.112	0.072
Residual Std. Error	0.660	0.569	0.665	0.659	0.570	0.666
F Statistic	147.285***	129.365***	92.396***	112.577***	93.789***	67.363***
Note:	*p<0.1; **p<0.05; ***p<0.01					



TABLE 7.23 Results of Mincer Analysis, RLMS 2018

	Total	Males	Females	Total	Males	Females
	(1)	(2)	(3)	(4)	(5)	(6)
Constant	9.182*** (9.051, 9.314)	9.352*** (9.170, 9.533)	8.611*** (8.437, 8.786)	9.774*** (9.689, 9.859)	9.999*** (9.883, 10.115)	9.420*** (9.306, 9.534)
Education, years	0.054*** (0.047, 0.062)	0.060*** (0.050, 0.070)	0.076*** (0.067, 0.086)			
Vocational education				0.029 (-0.018, 0.077)	0.038 (-0.022, 0.097)	0.099*** (0.029, 0.169)
Higher education				0.275*** (0.225, 0.325)	0.305*** (0.239, 0.370)	0.413*** (0.342, 0.484)
Experience	0.024*** (0.017, 0.030)	0.023*** (0.014, 0.032)	0.028*** (0.020, 0.036)	0.024*** (0.017, 0.030)	0.024*** (0.015, 0.033)	0.027*** (0.019, 0.035)
Experience squared	-0.001*** (-0.001, -0.0005)	-0.001*** (-0.001, -0.0005)	-0.001*** (-0.001, -0.0004)	-0.001*** (-0.001, -0.0005)	-0.001*** (-0.001, -0.0005)	-0.001*** (-0.001, -0.0004)
Observations	6,121	2,807	3,314	6,121	2,807	3,314
R <sup>2</sup>	0.071	0.109	0.092	0.070	0.105	0.087
Adjusted R <sup>2</sup>	0.071	0.108	0.091	0.069	0.104	0.086
Residual Std. Error	0.617	0.570	0.597	0.617	0.571	0.598
F Statistic	155.870***	113.720***	111.508***	115.221***	82.245***	78.510***
Note:	*p<0.1; **p<0.05; ***p<0.01					