

Policies to Support Businesses through the COVID-19 Shock

A Firm-Level Perspective

Xavier Cirera

Marcio Cruz

Elwyn Davies

Arti Grover

Leonardo Iacovone

Jose Ernesto Lopez Cordova

Denis Medvedev

Franklin Okechukwu Maduko

Gaurav Nayyar

Santiago Reyes Ortega

Jesica Torres



WORLD BANK GROUP

Finance, Competitiveness and Innovation Global Practice
January 2021

Abstract

Relying on a novel dataset covering more than 120,000 firms in 60 countries, this paper contributes to the debate about policies to support businesses through the COVID-19 pandemic. While governments around the world have implemented a wide range of policy support measures, evidence on the reach of these policies, the alignment of measures with firm needs, and their targeting and effectiveness remains scarce. This paper provides the most comprehensive assessment to date of these issues, focusing primarily on the developing economies. It shows that policy

reach has been limited, especially for the more vulnerable firms and countries, and identifies mismatches between policies provided and policies most sought. It also provides some indicative evidence regarding mistargeting of policies and their effectiveness in addressing liquidity constraints and preventing layoffs. This assessment provides some early guidance to policymakers on tailoring their COVID-19 business support packages and points to new directions in data and research efforts needed to guide policy responses to the current pandemic and future crises.

This paper is a product of the Finance, Competitiveness and Innovation Global Practice. It is part of a larger effort by the World Bank to provide open access to its research and make a contribution to development policy discussions around the world. Policy Research Working Papers are also posted on the Web at <http://www.worldbank.org/prwp>. The authors may be contacted at Liacovone@worldbank.org.

The Policy Research Working Paper Series disseminates the findings of work in progress to encourage the exchange of ideas about development issues. An objective of the series is to get the findings out quickly, even if the presentations are less than fully polished. The papers carry the names of the authors and should be cited accordingly. The findings, interpretations, and conclusions expressed in this paper are entirely those of the authors. They do not necessarily represent the views of the International Bank for Reconstruction and Development/World Bank and its affiliated organizations, or those of the Executive Directors of the World Bank or the governments they represent.

Policies to Support Businesses through the COVID-19 Shock: A Firm Level Perspective*

Xavier Cirera (World Bank)
Marcio Cruz (World Bank)
Elwyn Davies (World Bank)
Arti Grover (World Bank)
Leonardo Iacovone (World Bank and Hertie School)[†]
Jose Ernesto Lopez Cordova (World Bank)
Denis Medvedev (World Bank)
Franklin Okechukwu Maduko (Central European University and World Bank)
Gaurav Nayyar (World Bank)
Santiago Reyes Ortega (World Bank)
Jesica Torres (World Bank)

Originally published in the [Policy Research Working Paper Series](#) on *January, 2021*. This version is updated on *February, 2021*.

To obtain the originally published version, please email prwp@worldbank.org.

JEL classification: D22, L20, L25, O10

Keywords: COVID-19, Firms, Policies, Uncertainty.

*The authors thank Caroline Freund for her guidance and support of the Business Pulse Survey initiative. We gratefully acknowledge feedback and advice on the survey questionnaires from Nicholas Bloom, Francisco Campos, Ana Paula Cusolito, Mark Dutz, Caroline Freund, Jorge Rodriguez Meza, David McKenzie, Silvia Muzi, and Bilal Zia. Similarly, we are grateful to all the colleagues and counterparts institutions that have supported the data collection (a complete list of all colleagues, collaborators and institutions that have been crucial in providing support during data collection is provided in the online appendix). We would like to especially thank Edgar Avalos for his outstanding research support, and Tanay Balantrapu, Joao Belivaqua Basto, and Kyungmin Lee for their help through the data collection. We thank the Enterprise Analysis Unit of the Development Economics Global Indicators Department of the World Bank Group for making the Enterprise Survey data available. Financial support from USAID, the World Bank, and the IFC is gratefully acknowledged. The views expressed in this article are solely those of the authors and do not necessarily reflect those of the World Bank, its Executive Directors, or the countries they represent.

[†]Corresponding author, email: liacovone@worldbank.org

1. Introduction

The economic impact of the COVID-19 pandemic has been severe and persistent. In 2020, the global economy is expected to experience its worst recession since the great depression of the 1930s, with the highest share of countries experiencing contractions in per capita GDP since 1870 (WBG, 2020).¹ Estimates by Apedo-Amah et al. (2020) show that firm sales declined by more than 70% around the peak of the crisis (as measured by the steepest drop in Google Mobility), and have remained more than 40% below last year's levels even several months later. Two-thirds of firms have either fired employees, reduced worker hours or wages, or asked workers to take leave. More than half of micro and small businesses (those with fewer than 20 employees) are in arrears or expect to fall into arrears in the next six months. And while there is welcome news of vaccines and new treatments for COVID-19, these are unlikely to be available everywhere at once meaning that the economic pain is likely to persist for some time.

In response to the crisis, governments around the world have relied on a wide range of policy measures to support firms and households. While these responses have been uneven across countries, they are unprecedented in their magnitude. Fiscal stimulus in high-income economies has reached 10% of GDP or more, with around 40% going to firm support. In developing countries, faced with more limited fiscal space, governments have allocated between 1% and 3% of GDP to this purpose, with about a quarter of this amount dedicated to supporting businesses. Irrespective of the amount of the resources invested, data on whether these are reaching the intended beneficiaries, addressing their needs, and helping firms adjust to COVID-19 are desperately needed to inform policy-making. This paper provides the first such assessment on a global scale.

Specifically, the paper utilizes a unique data set covering more than 120,000 firms across 60 countries during the months of April-September 2020 to present a set of novel stylized facts on the policies implemented to support businesses from a firm-level perspective. It characterizes the beneficiaries of implemented policies, contrasts the policies implemented with ones that firms state are most important to them, identifies reasons for not accessing policy support, and links policies with firm performance, layoffs, expectations, and uncertainty. The paper also provides some initial indicative evidence about the targeting and effectiveness of policies.

Our main findings are grouped into four sets of stylized facts. First, we show that policy support has been especially limited for the most vulnerable firms and countries: micro firms are about half as likely to access support as large firms, and firms in high-income countries are about five times more likely to receive public support than firms in low-income countries. Second, we identify some mismatches between policies reported as most needed by firms and policies that firms are more likely to receive, particularly in upper-middle-income and high-income countries. Third, we document that targeting of initial policy responses was limited as well as some *mistargeting*, likely as a result of barriers to access support and lack of targeting capacity, with firms that did not experience shock or sales drop benefiting from support and firms experiencing large negative shocks not having access to public support. Fourth, we find indicative evidence of effectiveness: our results show that policies such as credit and cash transfers appear to be helping firms address liquidity constraints, while receiving wage subsidies seems to be associated with lower probability of firing workers.

¹The World Bank forecasts that the global economy will contract by 5.2 percent in 2020 (WBG, 2020).

This paper contributes to several related strands of the literature. Recently published volumes such as Baldwin and di Mauro (2020) have reviewed the range of emerging policy responses to COVID-19 and provided advice on how policy frameworks should evolve – although most of the focus has been on high-income economies and China. Authors such as Cororaton and Rosen (2020), Granja et al. (2020), De Marco (2020), Kozeniauskas et al. (2020), and Cui et al. (2020) have focused on the reach and targeting of specific programs in China, Italy, Portugal, and the United States. Additionally, this paper contributes to the emerging literature by authors including Chetty et al. (2020), Granja et al. (2020), and Cui et al. (2020) that have provided some early evidence on the effectiveness of programs to help firms weather the impacts of the pandemic in the same countries, as well as previous studies such as De Mel et al. (2012) and Bruhn (2020) that focused on experimental and quasi-experimental evidence from previous crises in Sri Lanka and Mexico.

The rest of the paper is structured as follows. The next section presents the data. The following two sections present policies that have been announced, including evidence on access to policies, as well as policies that firms identify as more needed. Then, we present evidence on mismatches between the demand and supply of policies, mistargeting, and barriers to accessing public support. Recognizing that the COVID-19 crisis has significantly altered firms’ outlook and heightened uncertainty (Altig et al., 2020), the section that follows specifically focuses on the relationship between receiving policy support and firms’ expectations and uncertainty. Lastly, we present some preliminary evidence about the effectiveness of different policies. The paper concludes with a discussion of policy implications and directions for future research.

2. Data

We rely on data from the first wave of the Business Pulse Surveys (BPS) developed by the World Bank Group (WBG) to measure the impact of the COVID-19 pandemic on the private sector (Apedo-Amah et al., 2020), as well as the COVID-19 follow-up rounds of the World Bank Enterprise Surveys.² This novel harmonized data set offers the most comprehensive assessment of the short-term impact of the shock (from April through August 2020). The sample includes more than 120,000 businesses in 60 low-, middle-, and high-income countries in the six regions where the WBG is present.³ The sample covers micro, small, medium, and large businesses across all main sectors (agriculture, manufacturing, retail, and other services, including construction).

The questionnaire collects information on business performance through the COVID-19 shock on some critical economic dimensions: operations of the business, sales, liquidity and insolvency, labor adjustments, firms’ responses, and expectations and uncertainty about the future (Apedo-Amah et al., 2020). Businesses are asked about their preferred mechanisms of support during the pandemic. We grouped these mechanisms in the following categories of policy instruments: monetary transfers, deferral of payments, access to finance, support with tax obligations, wage subsidies, and others.⁴ Businesses are also surveyed on whether they have received any of these mechanisms of support

²Source: Enterprise Surveys, The World Bank, <http://www.enterprisesurveys.org>.

³The survey covers East Asia and Pacific (EAP), Europe and Central Asia (ECA), Latin America and the Caribbean (LAC), Middle East and North-Africa (MNA), South Asia (SAR), and Sub-Saharan Africa (SSA). Among high-income countries, our data set includes Cyprus, Greece, Italy, Poland, Romania, and Slovenia.

⁴The menu of policies differed in some countries, but in most cases, options can be harmonized in these categories.

from local or national authorities, and if they have not, they are asked about the reasons why.⁵ The data set then offers a unique window into the private sector to assess both the need for policy and the availability of public support during the COVID-19 shock.

Given the variation in country samples and timing of the surveys, we follow Apedo-Amah et al. (2020) and introduce different controls in the analysis. Unless stated otherwise, we usually include in the analysis dummies for size, sector (i.e. 10 sectors), country, and the timing of the survey in terms of weeks relative to the peak of the COVID-19 shock.⁶ To control for differences in the number of observations in each country sample, we weight our results using the inverse of the number of observations in each country, that is, in the spirit of traditional cross-country analysis, each country has the same weight in our analysis.

3. The Supply of and access to policy support

To respond to the economic downturn caused by the COVID-19 pandemic, countries around the world have enacted a large suite of stabilization and recovery measures. According to the World Bank, governments across the world have implemented 1,607 measures directly aimed at supporting firms in 135 countries. More than three-quarters of these measures are concentrated in three categories: debt finance support, employment cost support, and tax support.⁷ Debt finance support has been the most common, accounting for more than a third of all policy measures adopted. Within this category, new lending under concessional terms accounts for 43%, followed by the deferral, restructuring or rescheduling of payments (26%) and credit guarantees (13%). Employment support constitutes roughly one-quarter of all measures that have been announced, with wage subsidies (38%) and support to self-employed individuals (26%) being the most common within this group. The third most common group of policy response measures is tax relief, representing one-fifth of all measures.⁸

Importantly, the type of policy responses varies systematically across countries. Low-income countries tend to use a less diversified set of interventions, with debt finance interventions accounting for almost half of all measures, but rely less heavily on employment support. High-income countries rely less heavily on debt finance or tax relief (31% and 17% of all measures, respectively), but use employment support measures (32%) more frequently. More direct forms of income transfers, i.e. wage subsidies and direct monetary transfers, are more common among firms in richer countries. Such differences suggest that variations in government administrative capabilities, fiscal space, the

⁵The questions read: 1. *What would be the most needed policies to support this business over the COVID-19 crisis?* (Choose up to three) Menu of options: monetary transfers, deferral of payments, access to finance, support with tax obligations, wage subsidies, and others; 2. *Since the outbreak of COVID-19, has this establishment received any national or local government measures issued in response to the crisis?* Menu of options: Yes, No; 3. *Did any of these measures involve any of the following?* (Choose all that apply) Menu of options: monetary transfers, deferral of payments, access to finance, support with tax obligations, wage subsidies, and others; 4. *What of the following options best describe the reason why this establishment did not receive any national or local government measures issued in response to the crisis?* Menu of options: I was not aware; Too difficult to apply; I am not eligible; I have applied but not received it; Other.

⁶This is measured using country-level Google Mobility Data.

⁷See World Bank, *Map of SME-Support Measures in Response to COVID-19*. Data and visualizations available here: <https://bit.ly/2Self96>. Policy responses are classified in eight different categories: business advice; business climate; business cost support; debt finance support; demand support measures; employment cost support; other finance support; and tax relief.

⁸Primarily through rate reductions, credits, waivers, and/or deferrals of VAT, payroll, social security, and land taxes (58% of all tax support measures); similar benefits on corporate taxes have been used to a lesser degree (30%).

extent of informality, financial sector development and the reach of the tax system determine the policy toolkit available to governments in each country.⁹

Despite the plethora of measures launched around the globe, only one out of four firms had received any type of public support at the time we conducted the surveys. This means that the large majority of firms around the world have faced the economic shock due to the COVID-19 pandemic without any type of public support. Panel (a) in Figure 1 shows the probability of utilizing public support across countries by income group, controlling for the fact that the survey was implemented at different stages of the pandemic as well as for sector and size fixed effects. One important caveat is that different countries had a different supply of public support, therefore we should expect lower access in countries where the public support policies that were implemented were more limited. Still, the results show stark differences by income levels: the probability of receiving some public support is 11% in low-income countries, 15% in lower-middle-income countries, 30% in upper-middle-income countries, and 53% in high-income countries.

The likelihood of receiving public support is also increasing in firm size (panel (b) in Figure 1), and this likelihood varies between 18% for micro firms and 30% for large ones. When looking at sectors, we do observe higher likelihood of receiving public support in some of the most affected sectors of the lock-down, such as accommodation (33%) and food preparation services (32%) (panel (c) in Figure 1). Finally, as expected, formal firms are more likely to access public support, albeit the difference is not large nor statistically significant.¹⁰ While formal registration is needed for accessing some support programs, and utilization rates are low, informal firms are still able to access some support policies which highlights an effort by some government to provide universal support during the pandemic.

Table 1 breaks down access to policy into each group of programs, and shows that there are significant differences across income in terms of what policies firms are more likely to have received. The likelihood of receiving wage subsidies, access to finance, and payment deferrals dramatically increase with income, and high-income countries are significantly more likely to offer every policy, but especially wage subsidies. Tax reductions and deferrals are the most common types of policies benefiting firms in low-income countries, with 5% of firms having access to them. The second most commonly accessed type of support in low-income countries is access to finance, which is received with a probability of 2%. Similarly, the likelihood of receiving access to finance, tax support, and wage subsidies significantly increases with the size of the firm, whereas there are no statistically significant differences across sizes for monetary transfers and payment deferrals.

One key difference in the composition of support policies utilized is between formal and informal firms (Table 1). As expected, for the countries where we obtained information from informal firms, these are less likely to have utilized specific policy support, especially tax support, since depending on the measure of informality, most of these firms are not tax registered. On the other hand, informal firms have a probability of close to 5% and 3% of receiving monetary transfers and wage subsidies, respectively. This is consistent with some views that suggest the use of cash transfers to target informal firms, given the difficulties in effectively obtaining information necessary for the targeting

⁹For additional discussions on observed policy responses see Freund and Mora (2020), IMF (2020), and ILO (2020)).

¹⁰16% for formal firms versus 13% for informal firms. See online appendix.

of other support policies.

4. The Demand for policy support

While the previous section provided a granular view of the supply of policy support, this section analyzes the most demanded policy instruments, and how the demand for policies varies across country income groups, firm size, formality status, sector, exporting status, and transmission channels, relying on the response to the question “What would be the most needed policies to support this business over the COVID-19 crisis?”

Overall, access to finance (which includes deferral of credit payments, suspension of interest payments, rollover of debt, access to new credit, and loans with subsidized rates) and tax reductions and deferrals (which includes fiscal exemptions and reductions and tax deferrals) are the most demanded policy instruments with close to 50% of businesses reporting these instruments as the most needed interventions (Table 2). This is significantly larger than the share of firms reporting other policy instruments as most needed, such as payment deferrals (24%), monetary transfers (30%), and wage subsidies (24%).

Table 2 shows significant heterogeneity in terms of demand for policy instruments across income groups. The demand for wage subsidies significantly increase with the income level of the country. In contrast, the demand for monetary transfers, payments deferrals, and access to credit follows an inverted U shape with a higher demand in middle-income countries, whereas tax reductions and deferral follows a U shape and is indeed the most demanded policy in low- and high-income countries. There are also significant differences in terms of the demand for policy support across firm size groups. Whereas the demand for tax reduction and deferrals and wage subsidies increases with size, the inverse is observed for monetary transfers, which is more likely among micro and small firms. Similarly, whereas the most demanded policy instruments for informal firms are monetary transfers and access to credit (with 60% of probability of each being the most needed policies), the most demanded interventions for formal firms are access to credit and tax support. There is little heterogeneity in terms of demand for policy support across sectors, exporting status, or channels through which the shock was transmitted, such as demand or production shocks.

Despite the heterogeneity observed across groups, we observe some common patterns. Access to finance and tax reductions and deferrals are among the top priorities across firms from different groups, with the exception of informal firms. Moreover, the demand for wage subsidies tends to increase with country income level and firm size.

5. Mismatch between demand for and supply of public support

Building on the previous sections, this section compares access to support with the firms’ stated preferences, that is, the potential mismatch between the demand for public policy and the access to these policies. Several elements can explain differences between policies demanded and received. First, some policies may not be available in the country due to fiscal constraints or preferences by the authorities. Second, firms may be discouraged from trying to access public support if application processes are too cumbersome or expensive, or if access is driven by opaque criteria and political

connections. Third, there are fewer constraints to indicate policies that are preferred than policies that are received, which involves clear trade-offs in terms of budget.¹¹

Our results show that, among firms in low-income countries, tax support is at the same time the most preferred and most commonly received type of support policies (see Table 1 and Table 2).¹² Instead, when analyzing the responses of firms in lower-middle-income countries, there is some alignment with tax deductions and deferrals, but a clear mismatch in the main intervention demanded and offered: access to credit is the most preferred policy, but tax support is the main mechanism of support offered, although only to 6% of businesses.

For upper-middle-income countries there is some alignment for wage subsidies, which at the same time rank high in terms of preferences among the firms but also are very commonly used. However, we identify a mismatch for tax deductions and access to credit, which appear to rank higher in terms of firms' preferences but low in terms of utilization or access. A similar picture emerges for high-income countries where there is a large mismatch for the demand for tax deferrals and access to these benefits, while there is a better alignment between the preference for wage subsidies and its utilization.

To investigate further the mismatch between the demand for policy and the public support received, we implemented a decomposition exercise to understand what variables have higher explanation power to explain the likelihood for demanding or receiving the support. First, we ran a probit model for each type of policy instrument, including tax support, wage subsidies, payment deferral, and access to credit controlling for size group, sector of activity, shock reported by the firm (e.g. supply, demand, or both), and country fixed effects. We then ran a Shapley decomposition to estimate the relative contribution of each regressor variable, grouped by size, sector, and type of shock. Figure 2 shows the results of this decomposition exercise, which are normalized to 1, excluding the contribution of country fixed effects.¹³

The mismatch between the demand for policies and policies received is particularly larger for payment deferrals and access to credit. Overall, the results for received policies are consistent across the different instruments. Most of the variation in the likelihood to receive public support associated with tax, wage subsidies, payment deferral, or access to credit, is explained by variation in size, followed by sector, and shock suffered. These results are also consistent with the fact that larger firms are more likely to receive support related to any of these instruments. A similar pattern is observed for demand for policy associated with tax support or wage subsidies. For both instruments, larger firms are more likely to report them as most needed policy. Yet, an inverted relationship is observed for access to credit and payment deferrals, where variation in the type of shock tends to have higher explanatory power for the demand for those instruments, followed by sector and size. This discrepancy is particularly relevant for access to credit.

¹¹In the BPS questionnaire, we asked firms to indicate up to three preferred policies.

¹²In this typology tax support encompasses both, tax exemption or reductions and tax deferrals.

¹³Absolute values of Pseudo R-squared vary by regression. Shapley values do not point the direction of the effect, but rather identify which grouping of variables contribute the most at explaining differences in both, preferences and access to policy.

6. Targeting (*mistargeting*) of beneficiaries

While the literature on social protection and transfers has focused extensively on the importance of targeting (see for example Hanna and Olken, 2018), evidence on private sector policies is more limited. Barrios et al. (2020) and Elenev et al. (2020) provide a framework for assessing the optimal targeting of loans during the pandemic and its role in extending liquidity support for small versus larger firms. The importance of targeting loans towards firms that critically need liquidity is also highlighted in Cororaton and Rosen (2020) who examine the characteristics of firms that have benefited from the United States' Paycheck Protection Program (PPP).¹⁴ Funds disbursed through the Coronavirus Aid, Relief, and Economic Security (CARES) Act's PPP did not flow to areas more adversely affected by the economic effects of the pandemic, as measured by declines in hours worked or business shutdowns, but most likely to less hard hit businesses and locations (Granja et al., 2020). By comparison, the roll-out of a similar program in Italy appears to have been effective in reaching the smaller firms and those in more adversely affected areas (De Marco, 2020). In Portugal, policies related to debt moratorium, government credit lines, tax deferral and subsidized paid furlough were accessed disproportionately by lower productivity firms as these were the hardest hit by the crisis (Kozeniauskas et al., 2020). In China, although labor informality limited the extent of support to smaller firms, the regressive tax structure of social insurance contributions, and the greater labor intensity of small firms and sectors affected by COVID-19, still allowed tax breaks to deliver substantial benefits to vulnerable firms (Cui et al., 2020).¹⁵

In this section, we explore the relationship between the type and magnitude of shock experienced by firms and their access to public support. While many of the support policies were designed as universal, and any firm regardless of how impacted they have been could apply for support, it is important to measure whether support has benefited firms that did not need it - *mistargeting*. Specifically, we describe *mistargeting* as support that is going to firms that are not experiencing the pandemic shock. First, we use the information available on shocks, and distinguish between firms that do not experience a demand shock (i.e. whether demand has decreased) or a supply shock (i.e. closed premises or labor or input shortages), from those that experience at least one of them. Second, we differentiate between firms that experience negative sales growth during the period and those that do not. Given that data were collected in most countries near the peak of the pandemic and sales referred to the level in the previous 30 days, there was little or no time for policies to have immediate impact on our sales data (we explore the issue of policy effectiveness in more detail in the last section). As a result, our sales variable is more likely to represent the size of the demand shock experienced by the firm and an indication of the need of the firm for policy support.

Overall, we observe that firms that experience a larger shock in terms of sales are more likely to get support. Some of the sectors most affected by the pandemic such as accommodation or food preparation are also the ones with a higher likelihood of receiving policy support. Figure 3

¹⁴ Among the set of eligible firms, beneficiaries tended to have more employees and have fewer investment opportunities and cash holdings.

¹⁵ Targeting firms for support is problematic even during normal times (Grover and Imbruno, forthcoming) and the crisis accentuated this challenge further. In the United States, it has been found to be related to the significant heterogeneity across banks in terms of their capacity to disburse PPP funds (Granja et al., 2020) or the lack of awareness among small firms on the PPP program (Hum, 2020) or bureaucratic hassles and difficulties establishing eligibility (Bartik et al., 2020).

confirms this result for all sectors, plotting the correlation between average sector drop in sales and the probability of accessing policy. The negative slope is consistent with effective targeting.

However, our results also show that a significant number of firms that did not experience any shock or sales drop as a result of the COVID-19 pandemic received public support. Figure 4 shows that while there is no significant difference in the probability of receiving public support for firms experiencing different types of shocks (26% for firms facing demand shocks only, 27% for firms facing supply shocks only and 29% for firms facing both); there is a non-negligible positive likelihood of near 20% of receiving public support for firms that declared not having experienced any shock. Also, the probability of firms that experience no change or increase in sales of receiving government support is 19%, not far from the 27% for firms that experience a reduction in sales. In addition, we also find evidence of firms in need of support that do not receive it. Controlling for firm size, sector, country and severity of the crisis, the average drop on sales for those firms that receive support is -49% compared to an also large -43% for the group that does not receive any support.

The data suggest two main sources of *mistargeting*. A first source is related to access to support. Apedo-Amah et al. (2020) show how smaller firms have been the most affected by the pandemic, but they have also been less likely to receive any support. Figure 5 shows that while for those firms that do not experience a drop in sales it is hard to find differences in the probability of access, around 20%; for those that experienced the shocks, large firms have a much larger probability of getting support.¹⁶ This may be driven by barriers to access policy support,¹⁷ which are likely to be more binding for smaller firms (see next section), but also raise some potential political economy issues (Besley, 2007) on how support may be implemented.

A second source of potential *mistargeting* has to do with government capacity and the ability of public agencies to target beneficiaries. Figure 6 shows the probability of *mistargeting* - this is the probability of providing support to a firm that did not experience a negative shock relative to a firm that did experience a negative shock - across different countries; divided by their level of income (left panel) or governance (right panel).¹⁸ In order to control for the availability of support and a more universal approach followed in some countries, we use the share of firms that receive support in a country as an additional control. The results suggest that low-income countries are more likely to experience *mistargeting*. Figure A4 confirms this result, since the drop in sales in low-income countries is larger for the group without any support (-43% vs -36%), while in high-income countries supported firms experience much larger drops in sales (-34%) than those that did not get support (-21%). One channel through which this *mistargeting* may occur is via low implementation capacity and lack of good governance. The right panel in Figure 6 shows that *mistargeting* is decreasing in the quality of governance.¹⁹

Summing up, while those firms that experience a more negative impact of the pandemic are more likely to receive support, there is some evidence that in the immediate aftermath of the pandemic

¹⁶Figure A5 shows the analogous figure using whether the firms experienced a drop in sales or not, with the same conclusions.

¹⁷We refer here both to information barriers as well as fixed costs to apply.

¹⁸Quality of governance is measured following (Kaufmann et al., 2010).

¹⁹Governance effectiveness captures perceptions of the quality of public services, the quality of the civil service and the degree of its independence from political pressures, the quality of policy formulation and implementation, and the credibility of the government's commitment to such policies (see Kaufmann et al., 2010).

crisis, governments have also supported a significant number of firms that did not experience any negative shock. This *mistargeting* is consistent with the fact that many policies were implemented very quickly, and targeting was not a big concern or too costly in the mind of policy makers, who mostly worried about the costs of inaction. But it is also explained by barriers to access and lack of implementation capacity. Going forward, as the crisis continues and puts pressure on limited fiscal resources, better and more careful targeting of beneficiaries and monitoring the access to policy support are critical.

7. Barriers to accessing public support: Lack of awareness

It is important to understand why a large number of firms have been unable to access policy support measures announced and implemented in response to the crisis thus far. The majority of firms refers to lack of awareness as main reason for not receiving government support. There are, however, important differences across countries at different levels of per capita income. Controlling for other observable characteristics, there is an inverse relationship between the share of firms that report the lack of awareness for being unable to access government support and the income classification of countries. This share ranges from 74% in low-income countries, 52% in lower-middle-income countries, 35% in upper-middle-income countries to 12% in high-income countries (Figure 7). In high-income countries, 45% of firms cite ineligibility while 41% cite difficulty in applying as the reason for not receiving government support thus far.

The lack of awareness is somewhat lower in larger firms, but is the main reason for firms being unable to access government support programs in each size category – 58% of micro firms, 54% of small firms, 52% of medium-sized firms and 48% of large firms (see Supplemental appendix). Strikingly, there is little evidence to suggest that awareness of government support programs has increased since the peak of the crisis. Controlling for firm size, sector and country, approximately 56% of firms report the lack of awareness for being unable to access government support 1 week after the peak crisis but this remained unchanged even 16 weeks after the crisis, albeit with some fluctuations (see Supplemental appendix).

8. Policy interventions, expectations, and uncertainty

One of the most important effects of the COVID-19 crisis is that it was unexpected and significantly altered firms' expectations and uncertainty (Lukas Buchheim and Link, 2020; Altig et al., 2020; Stephany et al., 2020). This issue is particularly relevant because it is informative for current and future policy decisions that need to understand the likely forward-looking scenarios faced by businesses going through a shock with large negative magnitude. For this reason, this section discusses how receiving different policies is correlated with future expectations and uncertainty.

8.1 Policy interventions and expectations

The survey shows that across the board firms are expecting to sell less. In low-income countries firms expect a decline in sales of about a third over the six months after the survey (compared to

the same time period last year), and about a fifth to a quarter in lower-middle-income countries.²⁰ In addition, between a third into half of firms expect to fall in arrears in the coming six months or are already in arrears.

There is no robust and clear relationship between overall government support and the expectations about future revenues at the firm-level. The data suggest that there are few differences in terms of revenues expectations between firms that received government support and those that did not. Averaging across countries, firms without government support report an expected drop of 16 percent, while firms with government support expect a decline of 14 percent (Figure 8), but this difference falls within the confidence interval. When controlling for observable characteristics such as size, sector and country, firms that have received government support expect lower sales than those that did not receive support, but these differences fall within the confidence intervals and are statistically insignificant. Since sales are to a large extent driven by demand and given that many policies are focused on covering acute cash shortfalls, we can expect government support to only play a small role in increasing sales at least in the short term.

There is a stronger relationship between government support and expectations around insolvency. Using the predicted likelihood of whether a firm has access to support programs as a measure of the probability that a firm can access public support, Figure 9 shows that firms that are more likely to access government support are also those that report to be less likely in arrears or expect to fall into arrears. This relationship is robust to controlling for the change in sales experienced by the firm during the previous 30 days, indicating that having access to government support could play a key role in helping prevent firms from insolvency even when facing higher drops in sales.

8.2 Policy interventions and uncertainty

Public policies can also play an important role in reducing the uncertainty faced by firms. This is a potentially important channel that could influence recovery because high degrees of uncertainty are likely to adversely affect firm investments and incentives to innovate, by reducing the appetite for entrepreneurial risk taking (see e.g., Bloom et al. (2007)) and limiting jobs growth and reallocation. The survey provides some suggestive evidence that public policies could reduce uncertainty and improve growth expectations. The right panel in Figure 9 shows a negative correlation between the predicted probability that firms have access to public support programs and their uncertainty, measured as the average standard deviation of the firms' sales prediction based on (Altig et al., 2019). This cross-sectional correlation though may be driven by a lot of different factors, and as shown by Figure 8 when we control for size, country, sector and timing of the survey (relative to the peak of the crisis), and the size of the experienced drop in sales, we find that uncertainty is not any different between firms that received support versus those that did not.²¹ While public policies may play an important role in reducing uncertainty towards the future, it is possible that the large uncertainty associated with the duration of the pandemic is at play during the COVID-19 crisis, which could explain our results. Applying to some of these public programs is costly and often

²⁰These figures are higher than seen in high-income countries. For example, the Federal Reserve Bank of Atlanta' Survey of Business Uncertainty reports expected drops in sales of between 0 and 3 percent for March and April 2020.

²¹This pattern is identical across countries with different income levels, as well as different sizes and sectors as shown in our online appendix.

complex, therefore firms that are more uncertain about the future could be more willing to incur these costs.

When digging further and breaking down the different types of policies, we confirm the results that uncertainty tends to be higher across firms receiving different types of support. However, these differences are not statistically significant as the point estimates fall within the confidence intervals.²²

9. Preliminary evidence on the effectiveness of policies

Despite the uniqueness of the current crisis, the impact of policy responses in past crises provides an important starting point to discuss the potential effectiveness of policies in the context of COVID-19. Fiscal stimulus in the form of temporary tax incentives for business investment has received some attention in the context of previous downturns (House and Shapiro (2008); Zwick (forthcoming)). In the aftermath of the December 2004 tsunami, Sri Lankan firms that received grants recovered profit levels substantially faster than those that did not (De Mel et al., 2012). Similarly, in Mexico, firms that were offered wage subsidies conditional on retaining workers in the aftermath of the global financial crisis, outperformed those that did not receive such benefits (Bruhn, 2020).

Evidence on the effectiveness of policies during COVID-19 has so far been mixed. Cui et al. (2020) and Chen et al. (2020) show that payroll tax mitigation and deferral of social insurance contributions in China bolstered the ability of firms to weather the economic downturn. However, Guerrieri et al. (2020) warn that in an economy where supply-side shocks directly influence aggregate demand and output, standard fiscal stimulus may be less effective than usual because the Keynesian multiplier feedback is muted due to the shut-down of some sectors. Instead, monetary policy can have magnified effects, by preventing firm exits and alleviating short-term liquidity constraints. Furthermore, studies have shown that financial support policies during COVID-19 have not been entirely effective in alleviating SMEs' cash constraints or encouraging the reopening of small businesses, potentially due to difficulties in accessing policy-oriented loans and misallocation of credit. This has been true in China (Chen et al., 2020) as well as the United States' PPP program (Granja et al., 2020; Chetty et al., 2020). During the current crisis, traditional macroeconomic tools – stimulating aggregate demand or providing liquidity to businesses – may have diminished capacity to restore employment when activity is muted due to health concerns (Chetty et al., 2020).²³

To begin exploring the effectiveness of policies in mitigating the adverse micro-level impacts of COVID-19, we first focus on the employment response. Figure 10 shows the elasticity of laying off workers to the change in sales for firms that received public support (red line and dots) versus those that did not (blue line and dots). The results suggest that public support was successful in reducing the number of workers laid off in response to a drop in sales. In the same figure, in the right panel, we show that these results are driven by one specific type of policy, i.e. wage subsidies.²⁴ We also

²²Results available upon request.

²³To help firms adjust and recover from the crisis, complementary investments may be needed to upgrade their capabilities and to mend broken supply chains. Some successful examples of firm upgrading programs include management consulting and technical skills training (Bloom et al. (2013); Iacovone et al. (2019); Anderson et al. (2018)), while supplier development and export promotion programs help alleviate information and networking frictions in accessing markets (Arráiz et al. (2013); Atkin et al. (2017)).

²⁴To confirm that these differences are statistically significant we estimated at the firm level the conditional elasticity (controlling for country, size, sector, and timing of the survey) of the share of workers laid off to change in sales and we

find that these results are driven by the impact of policies implemented in upper-middle-income and high-income countries²⁵ which is where the implementation of various forms of wage subsidy policies was more frequent.

Assessing rigorously the impact of policies is complex based on our cross-sectional data and the fact that a firm has access to policy support cannot be considered exogenous. Given our available information, it is not easy to identify an instrument that would work for different types of policies. For this reason, we present here some descriptive evidence based on simple OLS regressions but try to compare firms that are as comparable as possible. Specifically, we compare firms that applied and received policy support with those that also applied but did not receive it. Additionally, we always control for country, sector, size and time fixed effects, to make sure that we are narrowing our comparison to firms that are as similar as possible. We take these results as indicative evidence about the possible effect of policies while realizing we are not identifying precisely their causal impact as our results may still be affected by a selection bias.

We focus on four firm-level outcomes of interest, some are outcomes that we expect could be directly affected by the policies (i.e. likelihood of laying off workers, expected future sales growth, likelihood of falling into arrears), while the remaining one could be at the same time affected by policy but also operate as a mechanism that in turn influences future firm-level outcomes (i.e. probability of investing in digital technology and solutions). The results are presented in Table 3 where we separate our analysis for different groups of policies (each policy is separately analyzed in different columns). We observe that certain groups of policies appear to be more effective than others. Specifically, monetary transfers and access to credit which may be relaxing short-term credit-constraints and liquidity problems are correlated with higher future expected sales growth, as well as with higher probability of investing in digital solutions. Wage subsidies, in line with our prior and its stated objectives, is negatively correlated with the probability of firms laying off workers, while it does not seem to significantly influence future sales or likelihood of falling into arrears in the coming months. Tax support²⁶ only appears to be positively correlated with future expected sales growth, while it does not appear to influence future likelihood of falling into arrears, and accordingly does not appear to be successfully correlated with reducing the likelihood that liquidity constraints turns into solvency problems. Finally, payments deferral²⁷ seems to be the least effective of all the policies with some marginal effect and positive correlation with the likelihood of expanding the use of digital platforms.²⁸

10. Conclusion

Governments around the world responded to the deep economic impact of COVID-19 by rolling out more than 1,600 policy initiatives to support small and medium-sized businesses. While some learning from previous crises has proven useful in the initial response phase, policy makers and

find that this elasticity is significantly smaller (less negative) than the elasticity of firms that do not benefit from policy support at the 5 percent confidence interval.

²⁵These results are shown in Figure A3 in the online appendix.

²⁶Tax support includes fiscal exemptions, reductions as well as tax deferrals.

²⁷This only refers to deferral of rent, mortgage, or utilities.

²⁸The interested reader will find a more detailed and granular breakdown of individual policies in Table A1 in the supplementary material in the Online Appendix.

development practitioners have been faced with an acute lack of data and evidence on how to design and implement support policies. This lack of evidence is especially acute in developing countries. This paper addresses this gap by providing novel evidence using recently collected firm-level data covering more than 120,000 firms across 60 (mostly developing) countries.

The paper's results show that there are significant gaps to be addressed in order to improve the reach, targeting, and effectiveness of policy support. Smaller firms, especially those owned by women in sectors such as hospitality, are facing some of the largest declines in sales *and* the most limited access to policy support – raising concerns about widening inequality. Similarly, the likelihood of receiving support for firms in poor countries is several times less than for similar firms in high-income countries. While governments appear to have prioritized minimizing exclusion concerns over strict targeting in the earlier stages of the pandemic, this has resulted in a large number of firms benefiting from public assistance without having experienced any adverse COVID-19 shock – an issue that will demand more attention as fiscal space becomes more constrained. Lastly, there is indicative evidence that some types of policies (i.e. liquidity injections direct or through credit and wage subsidies) have been successful in mitigating liquidity constraints and reducing layoffs – but much more rigorous analysis will be needed to provide more precise guidance to policy makers.

Going forward, we see four main avenues for future research. First, understanding better how firms manage to receive public support and the extent to which connections may explain access to public resources. Second, our results so far present some novel associations but we limited ourselves to mainly presenting conditional correlations. Future research, relying on additional data collection and stronger identification strategies, should address more carefully the question of the effect of receiving public support on subsequent firm results. Third, some of the policies being implemented may have important spillover effects, especially when targeted firms play an important role in supply chains and production, which will be an important area for future work to identify the systemic effects of the policies being enacted. Finally, going forward it will be important to address the issue of policy misallocation and the risks that policies being enacted may inhibit the prospects for recovery and future growth because of insufficient or incorrect targeting.

References

- Information frictions and access to the paycheck protection program. *Journal of Public Economics*, 190:104244, 2020.
- D. Altig, J. Barrero, N. Bloom, S. Davis, B. Meyer, and N. Parker. Surveying business uncertainty. Technical report, NBER, June 2019.
- D. Altig, S. B. Baker, J. M. Barrero, N. Bloom, P. Bunn, S. Chen, S. J. Davis, J. Leather, B. Meyer, E. Mihaylov, P. Mizen, N. Parker, T. Renault, P. Siemtanka, and G. Thwaites. Economic uncertainty before and during the covid-19 pandemic. *Journal of Public Economics*, Forthcoming, 2020.
- S. J. Anderson, R. Chandy, and B. Zia. Pathways to profits: The impact of marketing vs. finance skills on business performance. *Management Science*, 64(12):5559–5583, 2018.
- M. C. Apedo-Amah, B. Avdiu, M. C. Xavier Cirera, E. Davies, A. Grover, L. Iacovone, U. Kilinc, D. Medvedev, F. O. Maduko, S. Poupakis, J. Torres, and T. T. Tran. Businesses through the Covid-19 Shock: Firm-Level Evidence from Around the World. Policy Research Working Paper 9434, World Bank, October 2020.
- I. Arráiz, F. Henríquez, and R. Stucchi. Supplier development programs and firm performance: evidence from chile. *Small Business Economics*, 41(1):277–293, 2013.
- D. Atkin, A. K. Khandelwal, and A. Osman. Exporting and firm performance: Evidence from a randomized experiment. *The Quarterly Journal of Economics*, 132(2):551–615, 2017.
- R. Baldwin and B. di Mauro. *Mitigating the COVID Economic Crisis: Act Fast and Do Whatever It Takes*. CEPR Press, 2020.
- J. Barrios, M. Minnis, W. Minnis, and J. Sijthoff. Assessing the payroll protection program: A framework and preliminary results. Technical report, University of Chicago, May 2020.
- A. W. Bartik, M. Bertrand, Z. Cullen, E. L. Glaeser, M. Luca, and C. Stanton. The impact of covid-19 on small business outcomes and expectations. *Proceedings of the National Academy of Sciences*, 117(30):17656–17666, 2020.
- T. Besley. *Principled Agents?: The Political Economy of Good Government*. Oxford University Press, 2007. URL <https://EconPapers.repec.org/RePEc:oxp:obooks:9780199283910>.
- B. Bloom, N. and Eifert, A. Mahajan, D. McKenzie, and J. Roberts. Does management matter? evidence from india. *Quarterly Journal of Economic*, 128(1):1–51, 2013.
- N. Bloom, S. Bond, and J. Van Reenen. Uncertainty and investment dynamics. *The review of economic studies*, 74(2):391–415, 2007.
- M. Bruhn. Can wage subsidies boost employment in the wake of an economic crisis? evidence from mexico. *The Journal of Development Studies*, pages 1–20, 2020.

- J. Chen, Z. Cheng, K. Gong, and J. Li. Riding out the covid-19 storm: How government policies affect smes in china. Technical report, SSRN, 2020.
- R. Chetty, J. N. Friedman, N. Hendren, M. Stepner, and T. O. I. Team. How did covid-19 and stabilization policies affect spending and employment? a new real-time economic tracker based on private sector data. Working Paper 27431, National Bureau of Economic Research, June 2020.
- A. Cororaton and S. Rosen. Public firm borrowers of the US paycheck protection program. Technical report, SMU Cox School of Business, April 2020.
- W. Cui, J. Hicks, and M. Norton. How well-targeted are payroll tax cuts as a response to covid-19? evidence from china. Technical report, SSRN, September 2020.
- F. De Marco. Public guarantees for small businesses in italy during covid-19. Technical report, SSRN, July 2020.
- S. De Mel, D. McKenzie, and W. Christopher. Enterprise recovery following natural disasters. *Economic Journal*, 122(559):64–91, 2012.
- J. Elenev, T. Landvoigt, and J. Van Nieuwerburgh. Can the covid bailouts save the economy? Technical report, NBER, May 2020.
- C. Freund and A. G. Mora. Keeping the lights on: Supporting firms and preserving jobs from crisis through recovery. Technical report, World Bank Private Sector Development Blog, April 2020.
- J. Granja, C. Makridis, C. Yannelis, and E. Zwick. Did the paycheck protection program hit the target? Technical report, NBER, July 2020.
- A. Grover and M. Imbruno. Using experimental evidence to inform firm support programs in developing countries. Working paper, World Bank Policy Research, forthcoming.
- V. Guerrieri, G. Lorenzoni, L. Straub, and I. Werning. Implications of covid-19: Can negative supply shocks cause demand shortages. Technical report, NBER, April 2020.
- R. Hanna and B. A. Olken. Universal basic incomes versus targeted transfers: Anti-poverty programs in developing countries. *Journal of Economic Perspectives*, 32(4):201–26, November 2018. doi: 10.1257/jep.32.4.201. URL <https://www.aeaweb.org/articles?id=10.1257/jep.32.4.201>.
- C. House and M. Shapiro. Temporary investment tax incentives: Theory with evidence from bonus depreciation. *American Economic Review*, 98(3):737–768, 2008.
- L. Iacovone, W. Maloney, and D. McKenzie. Improving management with individual and group-based consulting: Results from a randomized experiment in colombia. Working Paper 8854, World Bank Policy Research, 2019.
- ILO. Social protection responses to covid-19 crises around the world. Technical report, International Labour Organization, 2020.

- IMF. International monetary fund policy tracker. Technical report, International Monetary Fund, 2020.
- D. Kaufmann, A. Kraay, and M. Mastruzzi. The worldwide governance indicators : A summary of methodology, data and analytical issues. Policy Research Working Paper 5430, World Bank, 2010.
- N. Kozeniauskas, P. Moreira, and C. Santos. Covid-19 and firms: Productivity and government policies. Technical report, CEPR, 2020.
- C. K. Lukas Buchheim and S. Link. Sudden stop: When did firms anticipate the potential consequences of covid-19? *COVID Economics*, 36(July):25–44, 2020.
- F. Stephany, N. Stoehr, P. Darius, L. Neuhäuser, O. Teutloff, and F. Braesemann. The corisk-index: A data-mining approach to identify industry-specific risk assessments related to covid-19 in real-time. *COVID Economics*, 41(August), 2020.
- WBG. Global economic prospect. Technical report, World Bank Group, Washington D.C., 2020.
- E. Zwick. The costs of corporate tax complexity. *American Economic Journal:Economic Policy*, forthcoming.

Appendix

Figure 1: Access to public support.

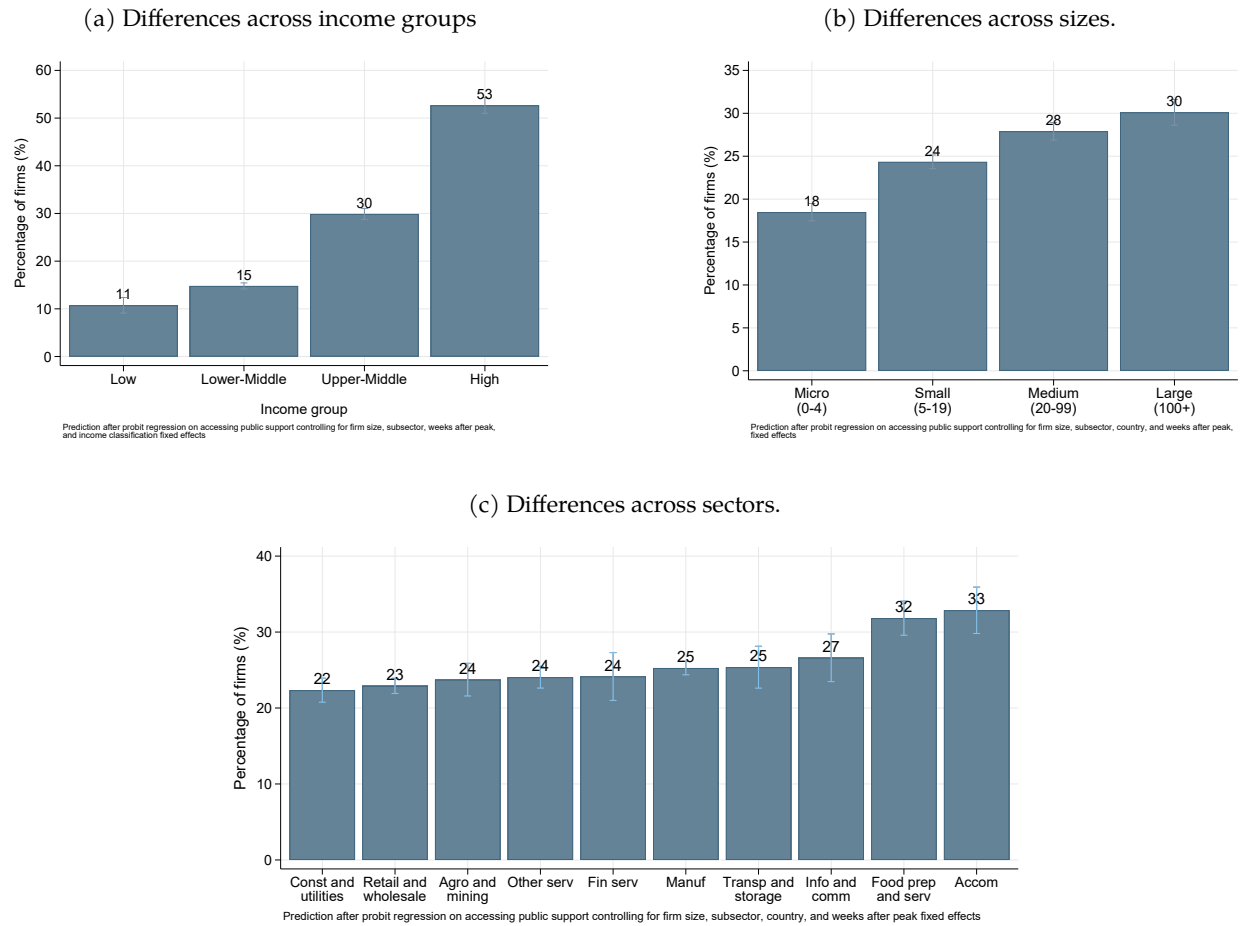


Table 1: Specific policies received (fraction of businesses).

	Monetary transfer	Payments deferral	Access to credit	Tax support	Wage subsidies
Total	5.97	5.72	5.49	7.61	16.56
Low	0.65	0.84	2.34	5.27	0.53
Lower-Middle	3.71	3.95	4.63	6.15	3.55
Upper-Middle	3.18	5.14	5.13	5.43	18.45
High	13.26	11.16	7.79	13.22	36.78
Micro (0-4)	5.57	4.20	3.17	4.92	10.58
Small (5-19)	6.87	5.85	5.58	7.58	15.81
Medium (20-99)	5.08	6.05	6.75	8.49	18.90
Large (100+)	5.91	6.19	6.74	9.47	20.22
Formal	3.42	3.70	2.00	3.74	6.93
Informal	4.72	1.57	1.95	0.79	3.19
Agro and mining	6.79	4.90	6.26	7.24	17.05
Manuf	6.52	5.86	5.93	7.65	17.46
Const and utilities	5.32	4.10	4.42	6.65	14.15
Retail and wholesale	4.86	5.06	4.75	7.06	14.40
Transp and storage	6.74	5.74	6.18	7.10	16.61
Accom	7.40	8.44	7.86	13.33	25.21
Food prep and serv	8.28	9.01	5.88	9.81	22.02
Info and comm	6.76	7.69	5.37	8.53	17.56
Fin serv	5.39	5.54	6.95	6.91	15.53
Other serv	4.98	5.76	4.88	7.12	15.99
Demand shock	6.31	7.09	5.92	8.02	18.40
Production shock	6.30	5.67	6.92	7.43	16.61
Both	7.25	7.34	6.48	9.18	21.24
No shocks suffered	4.70	3.34	3.96	5.80	12.40
Non-Exporter	6.02	6.79	5.58	8.09	19.55
Exporter	6.80	6.84	6.17	9.26	20.19

Note: Average predicted means from separate Probits that control for country, size, sector, and timing of the survey. Computations use weights equal to the inverse of the number of observations in each country.

Table 2: Most preferred policy support (fraction of businesses).

	Monetary transfer	Payments deferral	Access to credit	Tax support	Wage subsidies
Total	30.04	23.54	49.46	46.73	23.89
Low	9.53	8.43	25.65	50.38	14.19
Lower-Middle	29.80	26.02	59.16	46.07	16.64
Upper-Middle	36.06	23.77	49.37	46.52	41.96
High	31.52	15.00	25.39	65.24	45.99
Micro (0-4)	34.17	25.20	47.37	41.74	17.16
Small (5-19)	30.73	23.98	50.60	46.55	24.76
Medium (20-99)	26.11	21.33	50.96	49.58	27.06
Large (100+)	24.25	21.92	48.42	53.76	31.00
Formal	43.63	27.01	55.27	44.92	22.84
Informal	59.12	29.21	60.57	26.46	18.85
Agro and mining	33.57	18.85	52.11	37.53	21.02
Manuf	30.00	22.94	49.85	46.40	24.77
Const and utilities	29.12	19.99	51.47	46.51	21.82
Retail and wholesale	28.22	25.09	48.97	48.75	22.37
Transp and storage	30.75	20.82	49.50	46.75	25.57
Accom	31.32	22.41	47.17	48.57	31.55
Food prep and serv	33.49	31.48	49.44	45.88	23.62
Info and comm	29.82	24.83	47.79	52.06	22.11
Fin serv	24.78	20.92	48.69	50.10	21.85
Other serv	30.62	26.76	47.69	46.27	26.13
Demand shock	28.15	22.72	42.86	48.69	22.39
Production shock	26.81	24.71	52.39	46.33	21.39
Both	29.72	24.94	48.81	48.86	25.62
No shocks suffered	27.26	22.08	46.39	46.82	20.28
Non-Exporter	25.35	23.04	49.86	48.84	23.98
Exporter	25.34	21.97	47.71	50.22	27.40

Note: Average predicted means from separate Probits that control for country, size, sector, and timing of the survey. Computations use weights equal to the inverse of the number of observations in each country.

Figure 2: (Mis)match of demand and policies received

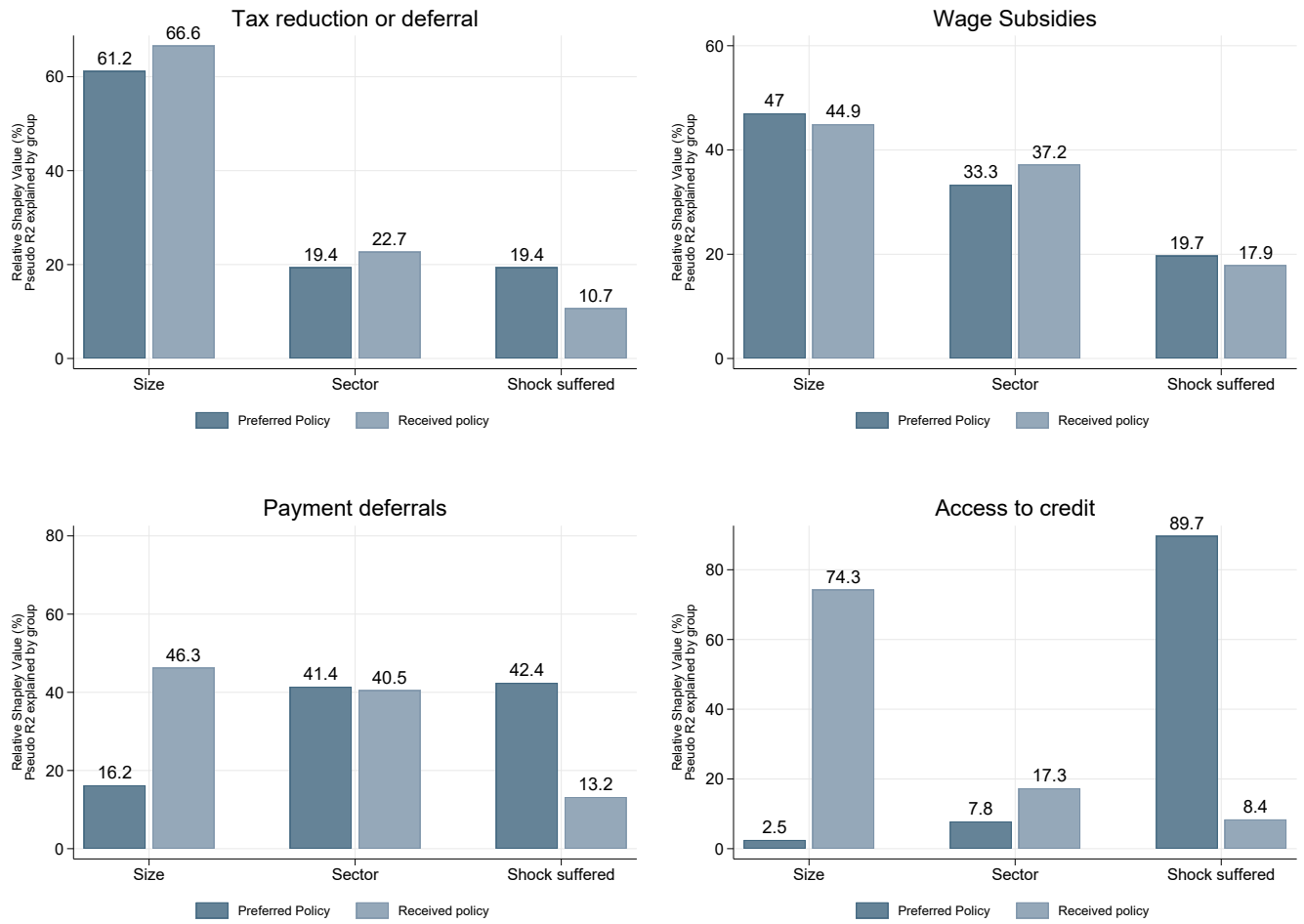
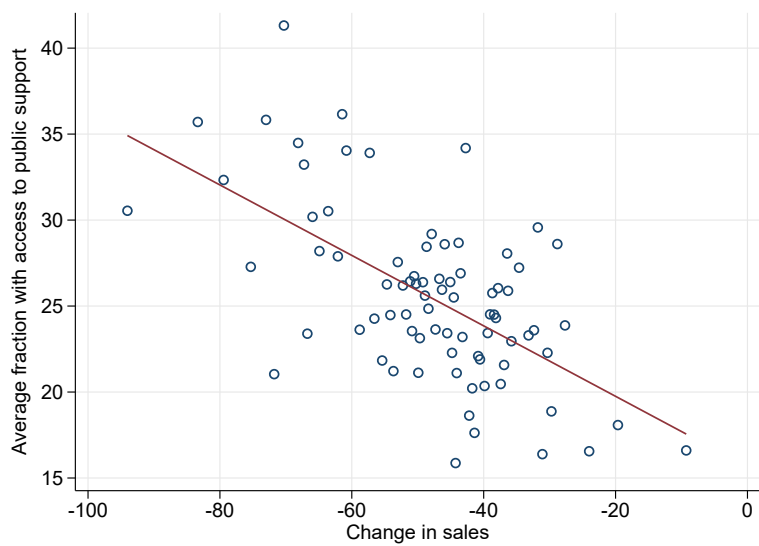


Figure 3: Correlation between change in sales and access to public support across sectors.



Note: For each sector in each country we compute the fraction of businesses with access to public support and the average change in sales. The figure is the binned scatterplot of this relationship after removing country fixed effects.

Figure 4: Mistargeting on shocks and sales

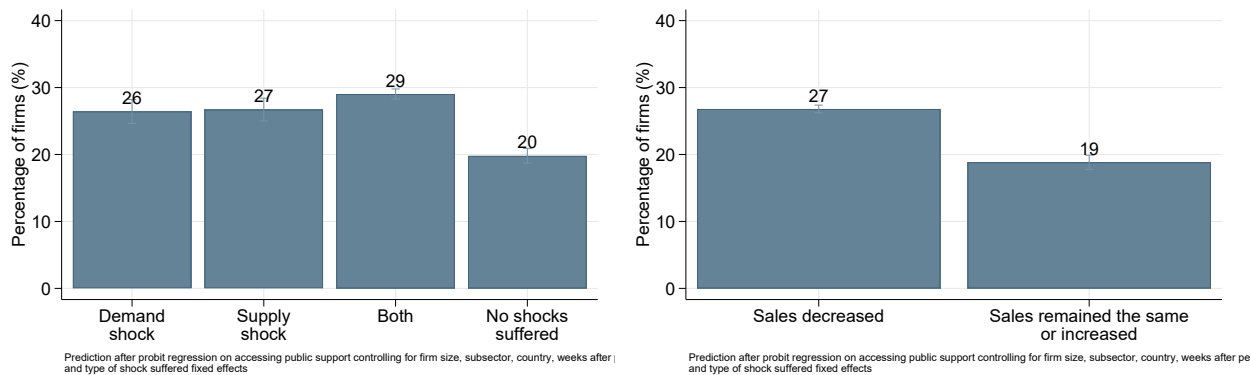


Figure 5: Access, impact on sales, and firm size

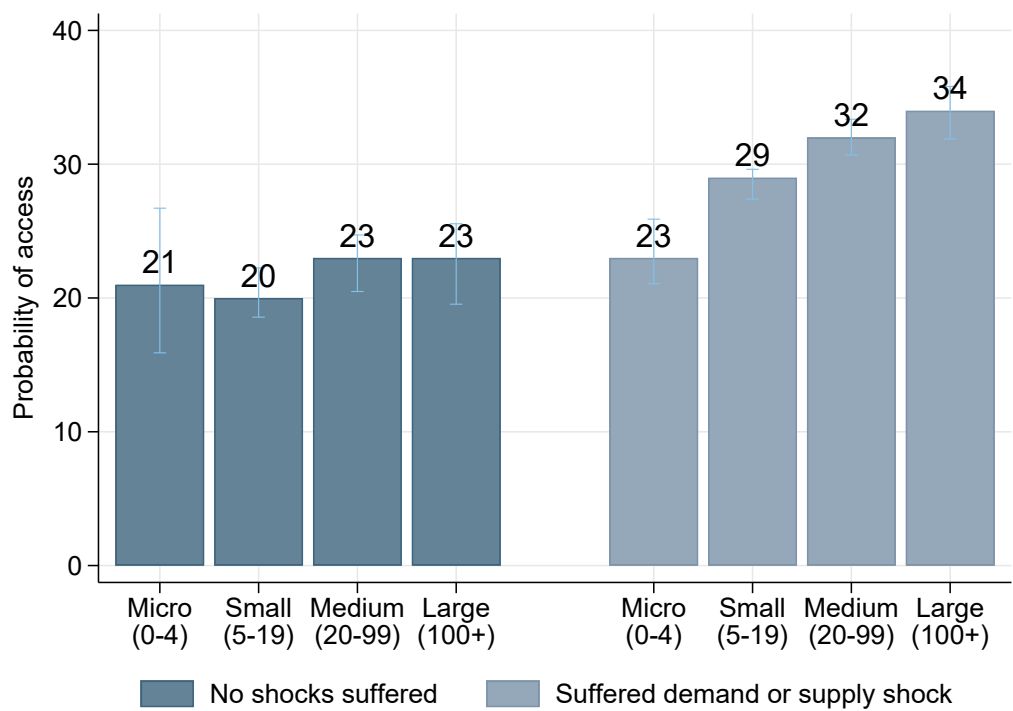


Figure 6: Mistargeting by income groups and levels of governance quality

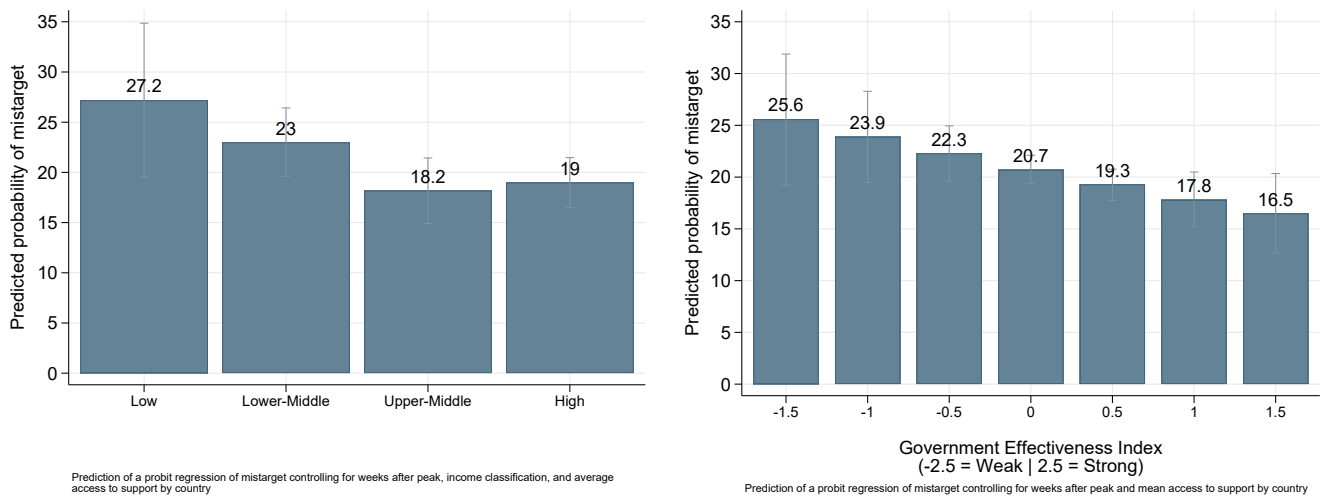
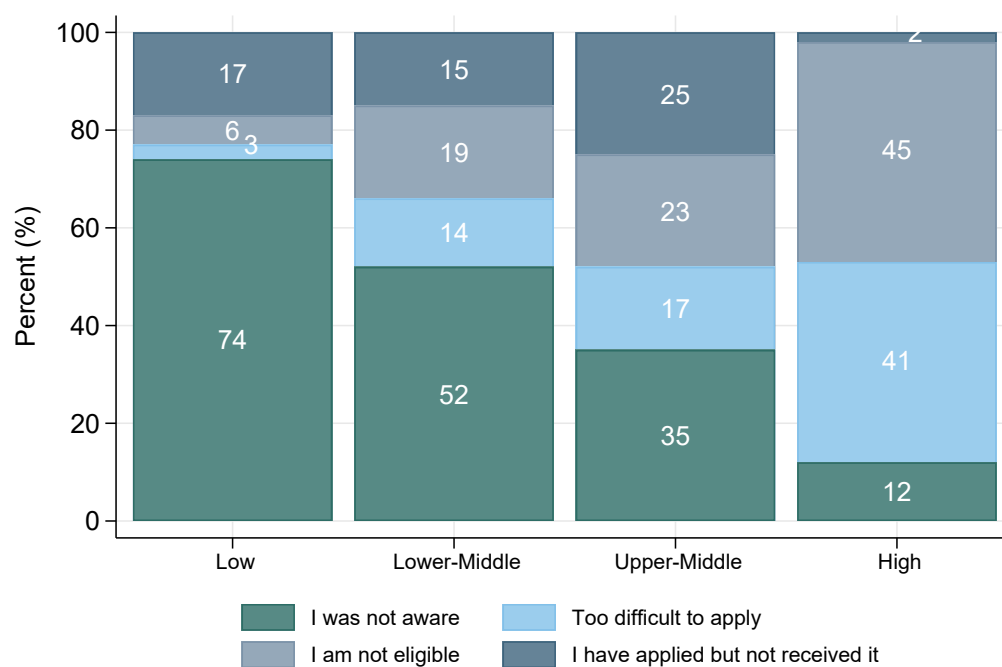
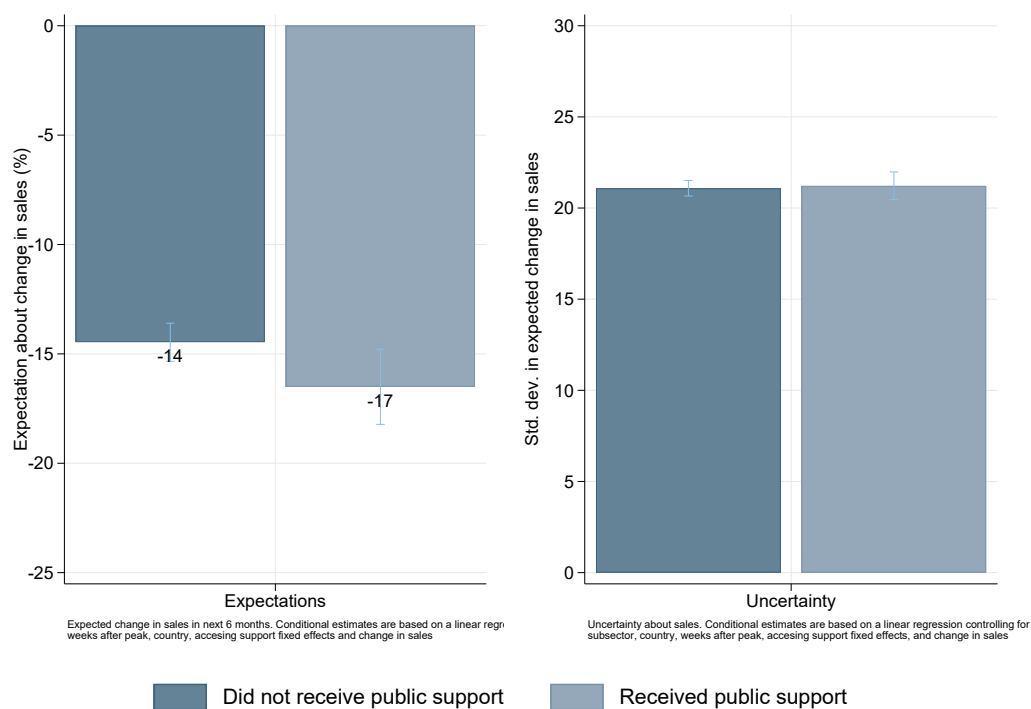


Figure 7: Reasons for not receiving public support across income group



Margins after multinomial logit controlling for firm size, subsector, weeks after peak, and income classification, fixed effects

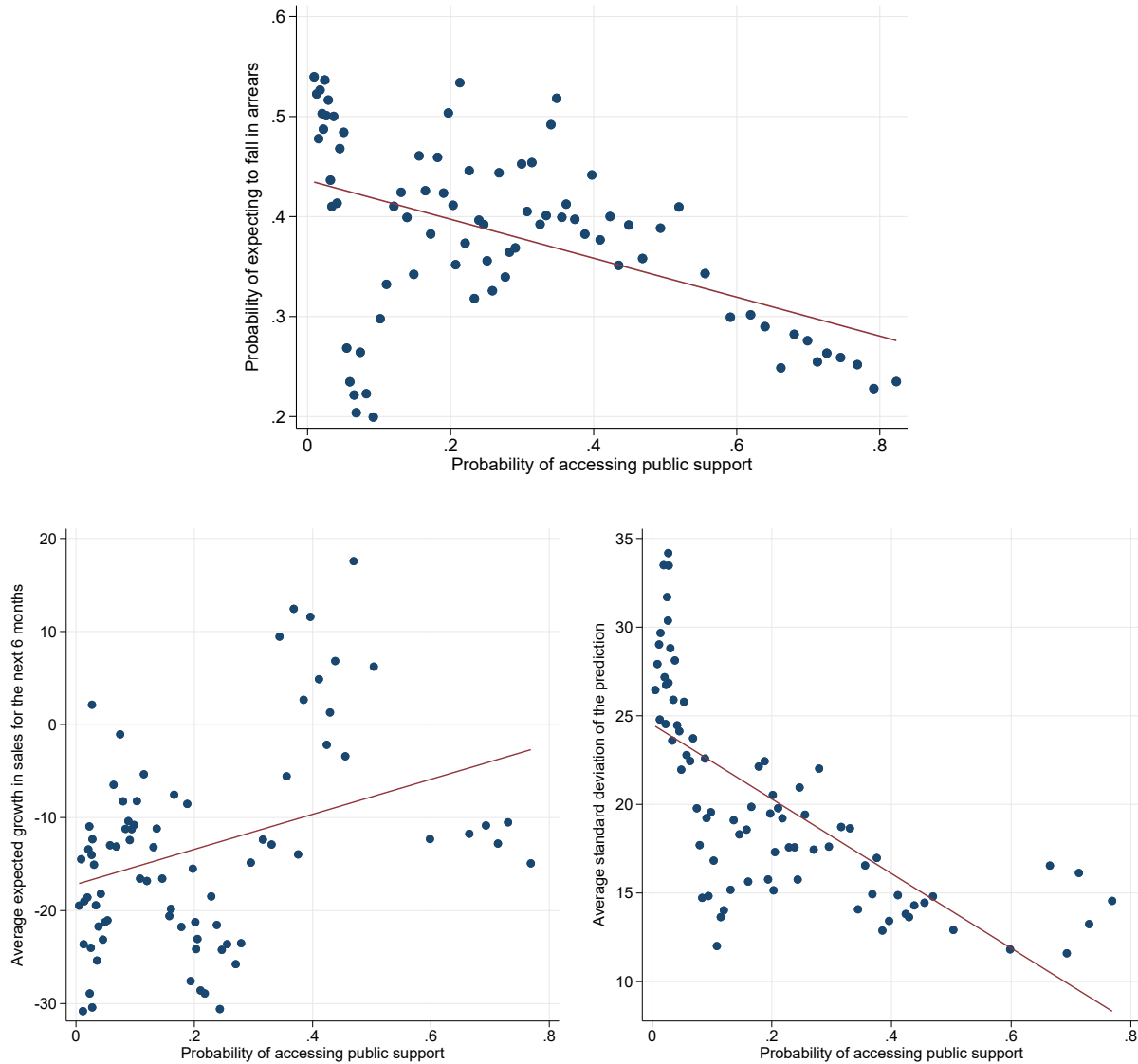
Figure 8: Expectations and uncertainty about sales growth in next 6 months



Expected change in sales in next 6 months. Conditional estimates are based on a linear regression controlling for subsector, country, weeks after peak, accessing support fixed effects, and change in sales

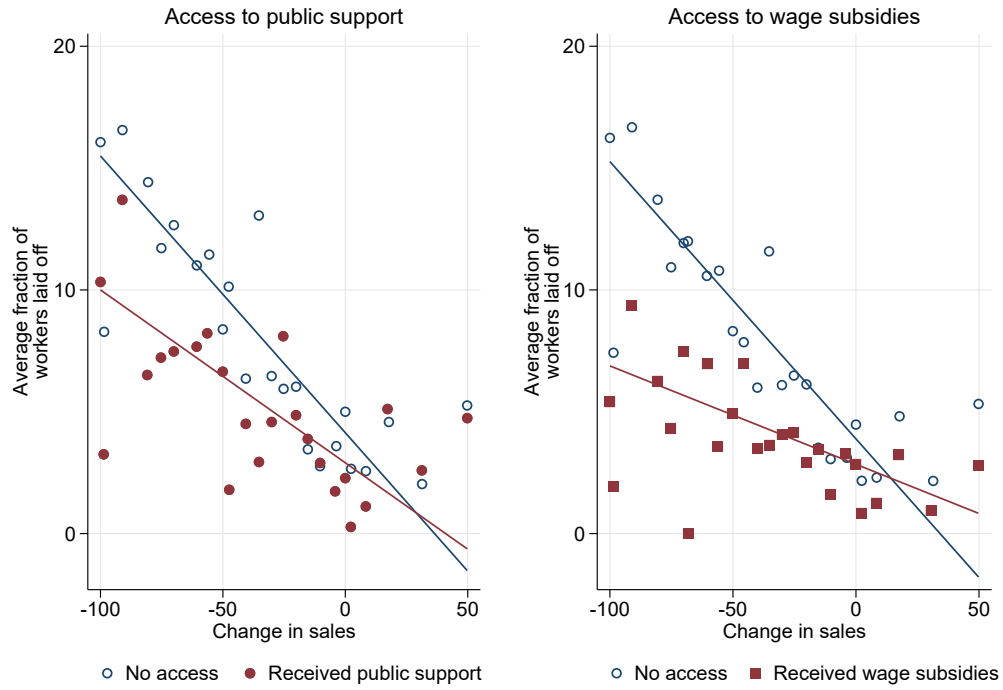
Uncertainty about sales. Conditional estimates are based on a linear regression controlling for subsector, country, weeks after peak, accessing support fixed effects, and change in sales

Figure 9: Probability of expecting to fall in arrears, expectations and uncertainty about sales growth, and access to public support.



Note: Average predicted probabilities from Probits controlling for country, size, sector, and weeks before and after the peak of the mobility shock. Binned scatterplots.

Figure 10: Correlation between fraction of workers fired and change in sales.



Note: Binned scatterplots. Computation use weights equal to the inverse of the number of observations in each country.

Table 3: Correlation between access to each policy and outcomes.

	Monetary transfer	Payments deferral	Access to credit	Tax support	Wage subsidies
Lays off workers (pr.)	-0.059 (0.032)	0.070 (0.039)	-0.028 (0.029)	-0.013 (0.030)	-0.094*** (0.020)
Expects to fall in arrears (pr.)	-0.050 (0.049)	-0.047 (0.061)	0.004 (0.046)	-0.064 (0.044)	-0.018 (0.039)
Expected sales growth (pp)	11.462*** (2.275)	6.908 (3.953)	8.193*** (2.257)	9.001*** (2.657)	2.711 (1.479)
Inc. invest. digital sol (pr.)	0.153*** (0.035)	0.081 (0.042)	0.113*** (0.028)	0.006 (0.031)	0.026 (0.024)

Standard errors in parentheses

* $p < 0.05$, ** $p < 0.01$, *** $p < 0.001$

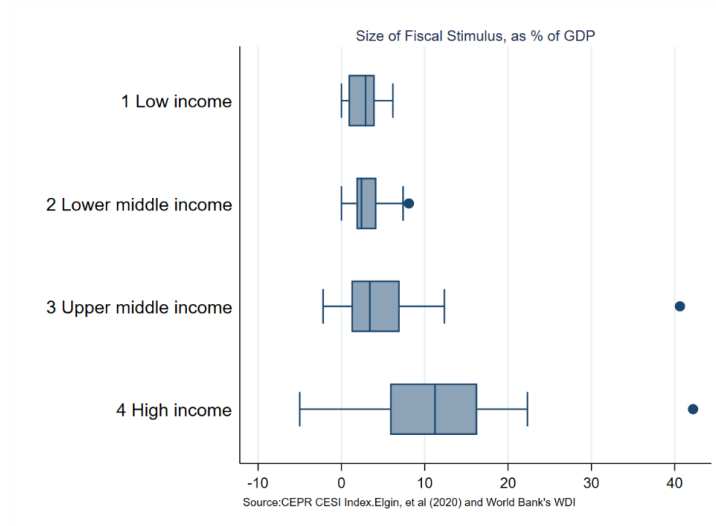
Detailed acknowledgements

We would like to thank the following World Bank colleagues who have supported data collection at country-level: Randa Akeel, Rob Swinkels, Gilead John Teri, Rafay Khan, Lukasz Marek Marc, Reena Badiani, Natasha Kapil, Anwar Aridi, Jean Michel N. Marchat, Andrea Coppola, Laurent Corthay, Siddharth Sharma, Utz Pape, Assadullah Nissar, Ananya Wahid Kader, Harsh Jhanjaria, Anuj Chaudhary, Rolf Behrndt, Subika Farazi, Cristian Quijada Torres, Michael Ehst, Farah Dib, Ganesh Rasagam, Gracelin Baskaran, John Gabriel Goddard, Eneida Fernandes, Prisca Mamitiana, Ayago Wambile, Tomomi Tanaka, Abdoullahi Beidou, Theresa Osborne, Serge Eric Radert, Carlos Vicente, Caroline Nogueira, Beatriz Machado Ribeiro, Caio Piza, Rafael Santos Dantas, Carolina Fabris Ferreira, Paola Fernandes, Guilherme Muchale, Claire Honore Hollweg, Philippe De Meneval, Aufa Doarest, Bertine Kamphuis, Massimiliano Cali, Jin Lee, Sharon Faye Alariao Piza, Mouna Hamden, Diletta Doretti, Shawn Tan, Asya Akhlaque, Brian Mtonya, Arthur J. Giesberts, Eric D. Manes. We also would like to thank Zurab Sajaia and the World Bank's Survey Solutions team for their support on providing the platform and technical assistance for data collection in several countries.

Similarly, we would like to thank a number of organizations for their support and work during the data collection process. Specifically, we would like to thank Ghanaian Statistical Service, INSTAT Madagascar, DANE, South African Department of Small Business Development Colombia, Brazilian Micro and Small Business Support Service (SEBRAE) Sao Paulo, Federation of Industries of the State of Ceará (FIEC), Vietnam General Statistics Office, Tunisia Institut National de la Statistique, Indonesia's Ministry of National Development Planning (Bappenas), Liberia Institute of Statistics and Geo-Information Services (LISGIS). And we would like to thank the following people: Vijay Valla, Dominique Vincent, Norbit Williams, Jimmy RAJAOBELINA, Jean Pierre zima Mefe, Anthony Krakah, Francis Mensah, Samuel Annim.

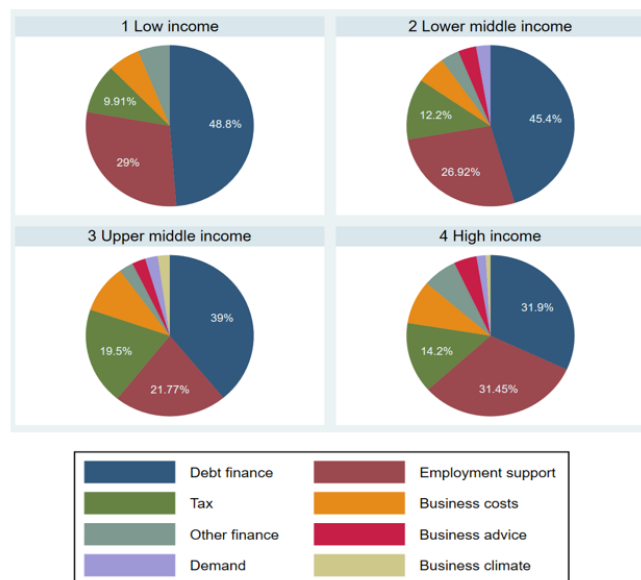
ONLINE APPENDIX: Supplementary Material

Figure A1: Size of fiscal stimulus.



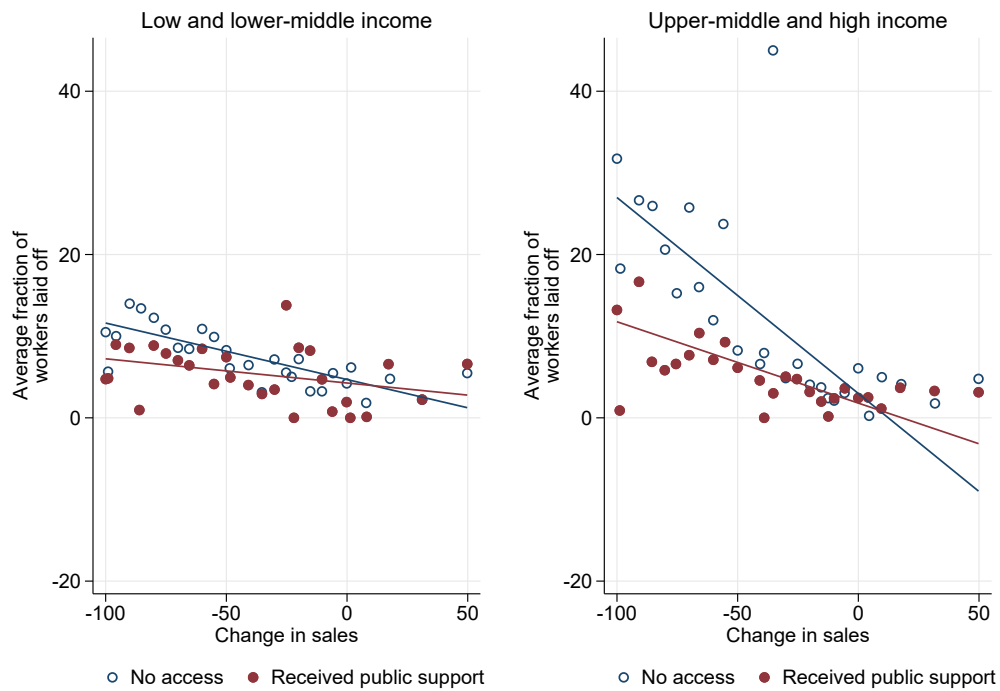
Country income groups are defined according to the World Bank's World Development Indicators definition.

Figure A2: Policy responses by income groups.



Country income groups are defined according to the World Bank's World Development Indicators definition.

Figure A3: Correlation between fraction of workers fired and change in sales. Differences across income groups.



Note: Binned scatterplots. Computation use weights equal to the inverse of the number of observations in each country.

Figure A4: Access by size and decline in sales

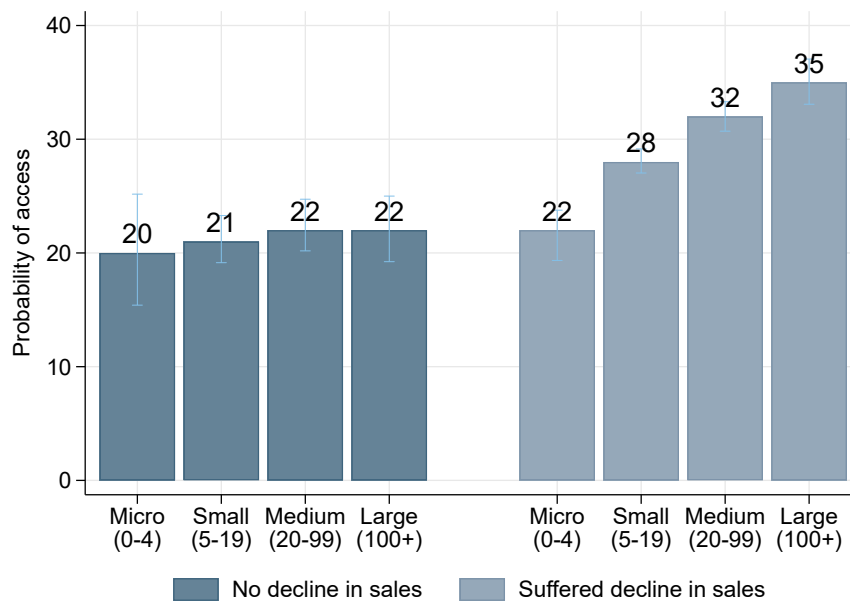
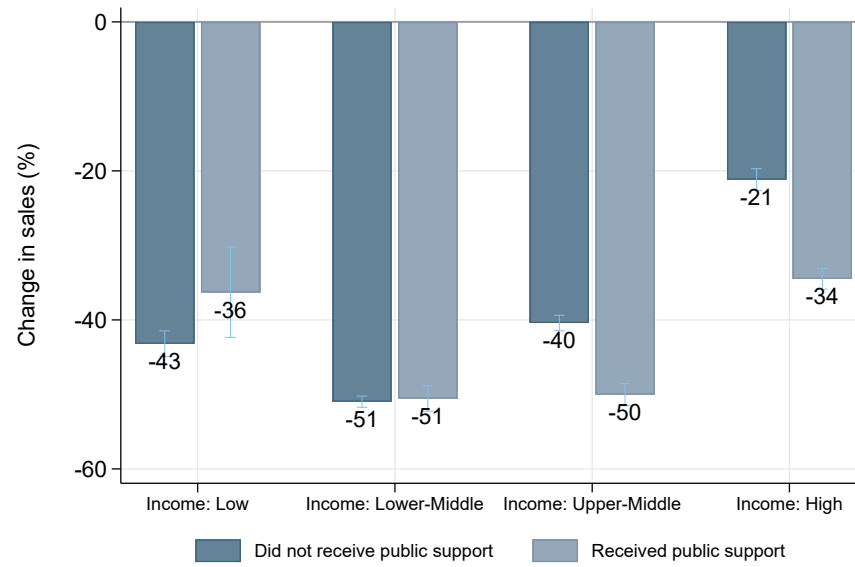


Figure A5: Access to public support and change in sales by income groups



Change in sales. Estimates are based on a linear regression controlling for firm size, subsector, weeks after peak fixed effects and income classification interacted with accessing support

Table A1: Correlation between access to each policy and outcomes. Individual instruments.

	Monetary transfer	Rent, utilities deferral	Credit payments deferral	New credit	Loans with subsidized rates	Fiscal exemptions or reductions	Tax deferral	Wage subsidies
Lays off workers (pr.)	-0.059 (0.032)	0.070 (0.039)	-0.019 (0.027)	-0.021 (0.052)	-0.088** (0.033)	0.034 (0.054)	-0.031 (0.025)	-0.094*** (0.020)
Expects to fall in arrears (pr.)	-0.050 (0.049)	-0.047 (0.061)	-0.035 (0.052)	0.037 (0.065)	0.021 (0.078)	-0.039 (0.058)	-0.106* (0.046)	-0.018 (0.039)
Expected sales growth (pp)	11.462*** (2.275)	6.908 (3.953)	7.542** (2.655)	12.053** (3.888)	4.216 (3.495)	8.270* (3.589)	9.238*** (2.758)	2.711 (1.479)
Inc. invest. digital sol (pr.)	0.153*** (0.035)	0.081 (0.042)	0.165*** (0.032)	0.108* (0.050)	0.165*** (0.047)	0.033 (0.050)	0.017 (0.029)	0.026 (0.024)

Standard errors in parentheses

* $p < 0.05$, ** $p < 0.01$, *** $p < 0.001$